

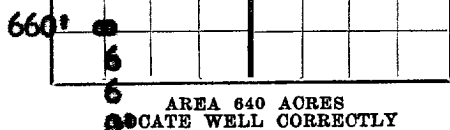
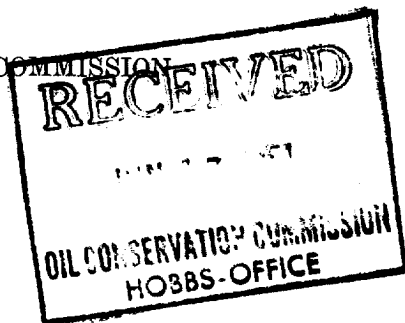
DUPLICATE

FORM C-105

N

NEW MEXICO OIL CONSERVATION COMMISSION
Santa Fe, New Mexico

WELL RECORD



Mail to Oil Conservation Commission, Santa Fe, New Mexico, or its proper agent not more than twenty days after completion of well. Follow instructions in the Rules and Regulations of the Commission. Indicate questionable data by following it with (?). SUBMIT IN TRIPLICATE. FORM C-110 WILL NOT BE APPROVED UNTIL FORM C-105 IS PROPERLY FILLED OUT.

Magnolia Petroleum Company
Davis Federal
Well No. 1 in SW/4 of Sec. 7, T. 2-S
R. 36E, N. M. P. M. Bough Field, Lea County.
Well is 660 feet south of the north line and 660 feet east of the west line of Section 7.
If State land the oil and gas lease is No. Assignment No. Federal No. LC-067763
If patented land the owner is. Address.
If Government land the permittee is. unknown. Address.
The Lessee is. Magnolia Petroleum Company. Address. Box 727, Kermit, Texas
Drilling commenced January 25, 1951. Drilling was completed April 26, 1951.
Name of drilling contractor. Helmerick and Payne, Inc. Address. First Nat'l Bldg., Tulsa, Okla.
Elevation above sea level at top of casing. 4117 feet.
The information given is to be kept confidential until. 19.

OIL SANDS OR ZONES

No. 1, from 9635 to 9664. No. 4, from. to.
No. 2, from. to. No. 5, from. to.
No. 3, from. to. No. 6, from. to.

IMPORTANT WATER SANDS see reverse

Include data on rate of water inflow and elevation to which water rose in hole.

No. 1, from. to. feet.
No. 2, from. to. feet.
No. 3, from. to. feet.
No. 4, from. to. feet.

CASING RECORD

SIZE	WEIGHT PER FOOT	THREADS PER INCH	MAKE	AMOUNT	KIND OF SHOE	OUT & FILLED FROM	PERFORATED FROM TO	PURPOSE
13-3/8"				407	HOWCO			Surface
8-5/8"				4383	HOWCO			Intermediate
5-1/2"				9629	HOWCO			Oil String
2"				9663				

MUDDING AND CEMENTING RECORD

SIZE OF HOLE	SIZE OF CASING	WHERE SET	NO. SACKS OF CEMENT	METHODS USED	MUD GRAVITY	AMOUNT OF MUD USED
17-1/2"	13-3/8"	407	400	Pump and Plug		
12-1/4"	8-5/8"	4383	2400/640/150	pump and plug		
7-7/8"	5-1/2"	9629	1120/280/500	pump and plug		

PLUGS AND ADAPTERS see reverse

Heaving plug—Material. Length. Depth Set.
Adapters — Material. Size.

RECORD OF SHOOTING OR CHEMICAL TREATMENT None

SIZE	SHELL USED	EXPLOSIVE OR CHEMICAL USED	QUANTITY	DATE	DEPTH SHOT OR TREATED	DEPTH CLEANED OUT

Results of shooting or chemical treatment.

RECORD OF DRILL-STEM AND SPECIAL TESTS

If drill-stem or other special tests or deviation surveys were made, submit report on separate sheet and attach hereto.

TOOLS USED

Rotary tools were used from 0 feet to 9664 feet, and from. feet to. feet.
Cable tools were used from. feet to. feet, and from. feet to. feet.

PRODUCTION

Put to producing May 4, 1951.
The production of the first 24 hours was 417.90 barrels of fluid of which 100% was oil; 0% emulsion; 0% water; and 2/10 of 1% sediment. Gravity, Be. 47.9-60.
If gas well, cu. ft. per 24 hours. Gallons gasoline per 1,000 cu. ft. of gas.
Rock pressure, lbs. per sq. in.

EMPLOYEES

Driller. Driller.
Driller. Driller.

FORMATION RECORD ON OTHER SIDE

I hereby swear or affirm that the information given herewith is a complete and correct record of the well and all work done on it so far as can be determined from available records.

Subscribed and sworn to before me this 11th day of June, 1951. Kermit, Texas June 11, 1951.
Name. [Signature]
Position. Dist. Supt.
Representing. Magnolia Petroleum Company

FORMATION RECORD

FROM	TO	THICKNESS IN FEET	FORMATION