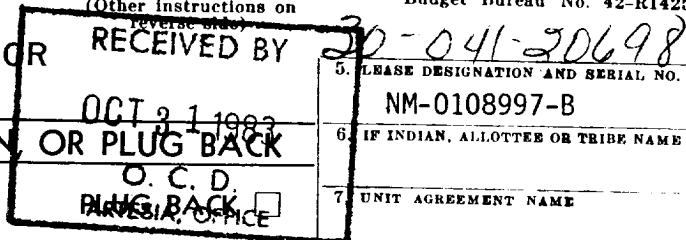


NM OIL CONS. COMMISSION
Artesia, NM 88210
UNITED STATES
DEPARTMENT OF THE INTERIOR
GEOLOGICAL SURVEY

SUBMIT IN 1 ICATE*

(Other instructions on reverse side)

Form approved.
Budget Bureau No. 42-R1425.

APPLICATION FOR PERMIT TO DRILL, DEEPEN, OR PLUG BACK

1a. TYPE OF WORK

DRILL ☒DEEPEN ☐

b. TYPE OF WELL

OIL WELL ☒GAS WELL ☐OTHER ☐SINGLE ZONE ☒MULTIPLE ZONE ☐

2. NAME OF OPERATOR

JOE E. BROWN

3. ADDRESS OF OPERATOR

P.O. BOX 543, LOVINGTON, NEW MEXICO 88260

4. LOCATION OF WELL (Report location clearly and in accordance with any State requirements.)*

At surface

1310' FSL AND 1310' FWL OF SECTION 28

At proposed prod. zone

14. DISTANCE IN MILES AND DIRECTION FROM NEAREST TOWN OR POST OFFICE*

14 MILES WEST-NORTHWEST OF MILNESAND, NEW MEXICO

15. DISTANCE FROM PROPOSED*

LOCATION TO NEAREST
PROPERTY OR LEASE LINE, FT.
(Also to nearest drlg. unit line, if any)

1310'

16. NO. OF ACRES IN LEASE

2160

17. NO. OF ACRES ASSIGNED
TO THIS WELL

40

18. DISTANCE FROM PROPOSED LOCATION*
TO NEAREST WELL, DRILLING, COMPLETED,
OR APPLIED FOR, ON THIS LEASE, FT.

919'

19. PROPOSED DEPTH

4500'

20. ROTARY OR CABLE TOOLS

ROTARY

21. ELEVATIONS (Show whether DF, RT, GR, etc.)

4415.2 GR

22. APPROX. DATE WORK WILL START*

UPON APPROVAL

23.

PROPOSED CASING AND CEMENTING PROGRAM

SIZE OF HOLE	SIZE OF CASING	WEIGHT PER FOOT	SETTING DEPTH	QUANTITY OF CEMENT
12-1/4"	8-5/8"	24#	1800'	SUFFICIENT TO CIRCULATE
7-7/8"	4-1/2"	9.5#	4500'	300 SACKS

PRODUCING ZONE WILL BE PERFORATED AND STIMULATED AS NECESSARY.

SEE ATTACHED FOR: SUPPLEMENTAL DRILLING DATA
BOP SKETCH
SURFACE USE AND OPERATIONS PLAN
SURFACE RESTORATION REQUIREMENTS

IN ABOVE SPACE DESCRIBE PROPOSED PROGRAM: If proposal is to deepen or plug back, give data on present productive zone and proposed new productive zone. If proposal is to drill or deepen directionally, give pertinent data on subsurface locations and measured and true vertical depths. Give blowout preventer program, if any.

24.
SIGNED Arthur R. Brown TITLE Agent DATE October 7, 1983
(This space for Federal or State office use)

PERMIT NO. _____

APPROVAL DATE _____

APPROVED BY

TITLE _____

DATE 10/27/83

CONDITIONS OF APPROVAL, IF ANY:

*See Instructions On Reverse Side

APPROVAL SUBJECT TO
GENERAL REQUIREMENTS AND
SPECIAL STIPULATIONS
ATTACHED

NMOC Approval For Northstar Location

**NEW MEXICO OIL CONSERVATION COMMISSION
WELL LOCATION AND ACREAGE DEDICATION PLAT**

Form C-102
Supersedes C-128
Effective 1-1-65

All distances must be from the outer boundaries of the Section

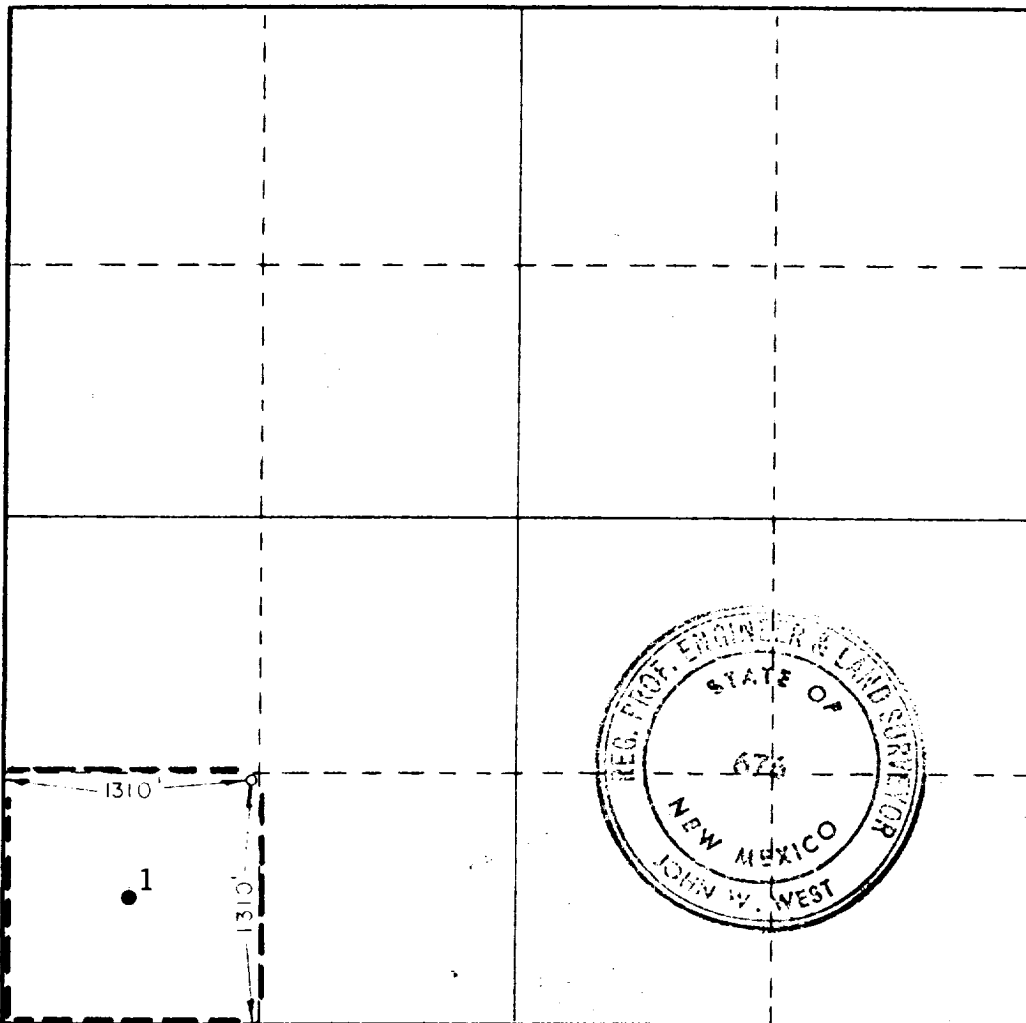
Operator JOE E. BROWN			Lease FARRELL FEDERAL		Well No. 23
Unit Letter M	Section 28	Township 7 SOUTH	Range 33 EAST	County ROOSEVELT	
Actual Footage Location of Well: <div style="display: flex; justify-content: space-between;"> 1310 feet from the SOUTH line and 1310 feet from the WEST line </div>					
Ground Level Elev. 4415.2	Producing Formation SAN ANDRES		Pool CHAVEROO SAN ANDRES		Dedicated Acreage: 40 Acres

1. Outline the acreage dedicated to the subject well by colored pencil or hachure marks on the plat below.
2. If more than one lease is dedicated to the well, outline each and identify the ownership thereof (both as to working interest and royalty).
3. If more than one lease of different ownership is dedicated to the well, have the interests of all owners been consolidated by communitization, unitization, force-pooling, etc?

☐ Yes ☐ No If answer is "yes," type of consolidation _____

If answer is "no," list the owners and tract descriptions which have actually been consolidated. (Use reverse side of this form if necessary.) _____

No allowable will be assigned to the well until all interests have been consolidated (by communitization, unitization, forced-pooling, or otherwise) or until a non-standard unit, eliminating such interests, has been approved by the Commission.



CERTIFICATION

I hereby certify that the information contained herein is true and complete to the best of my knowledge and belief.

Name *Arthur R. Brown*
Arthur R. Brown

Position

Agent

Company

JOE E. BROWN

Date

October 7, 1983

I hereby certify that the well location shown on this plat was plotted from field notes of actual surveys made by me or under my supervision, and that the same is true and correct to the best of my knowledge and belief.

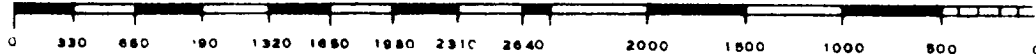
Date Surveyed

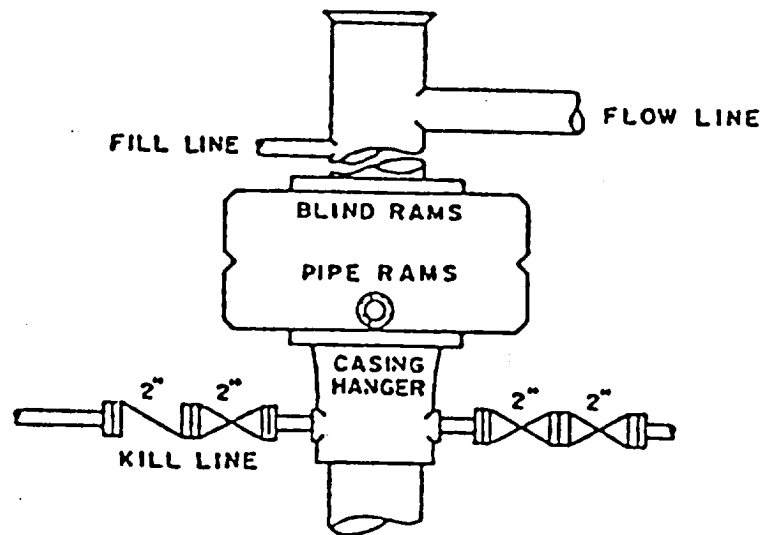
SEPTEMBER 15, 1983

Registered Professional Engineer and/or Land Surveyor

John W. West

Certificate No **JOHN W. WEST, 676**
RONALD J. EIDSON, 3239





BOP STACK

SERIES 600

DEPTH INTERVAL

BELOW 8-5/8" CASING SEAT

BOP ARRANGEMENT

NOV 1 1983
HOBBS OFFICE

111