

NUMBER OF COPIES RECEIVED
DISTRIBUTION
SANTA FE
FILE
U.S.G.S.
LAND OFFICE
TRANSPORTER
OIL GAS
PRORATION OFFICE
OPERATOR

NEW MEXICO OIL CONSERVATION COMMISSION
Santa Fe, New Mexico

Form G-101
Revised (12/1/55)

NOTICE OF INTENTION TO DRILL

Notice must be given to the District Office of the Oil Conservation Commission and approval obtained before drilling or recompletion begins. If changes in the proposed plan are considered advisable, a copy of this notice showing such changes will be returned to the sender. Submit this notice in QUINTUPLICATE. One copy will be returned following approval. See additional instructions in Rules and Regulations of the Commission. If State Land submit 6 Copies Attach Form G- 128 in triplicate to first 3 copies of form G-101

Box 128, Hobbs, New Mexico

12-15-64

(Place)

(Date)

OIL CONSERVATION COMMISSION
SANTA FE, NEW MEXICO

Gentlemen:

You are hereby notified that it is our intention to commence the Drilling of a well to be known as
Sunray DX Oil Company

New Mexico State "AX"
(Lease)

(Company or Operator)

Well No. 1, in M. The well is

located 330 feet from the South line and 330 feet from the line of Section 4, T. 9S, R. 32E, NMPM.

(GIVE LOCATION FROM SECTION LINE) Undesignated Pool, Lea County

If State Land the Oil and Gas Lease is No. 00 2275

If patented land the owner is

Address

We propose to drill well with drilling equipment as follows: Rotary Tools.

The status of plugging bond is Approved

Drilling Contractor Leatherwood Drilling Company
P.O. Box N
Kernit, Texas

We intend to complete this well in the San Andres formation at an approximate depth of 4300 feet.

CASING PROGRAM

We propose to use the following strings of Casing and to cement them as indicated:

Table with 6 columns: Size of Hole, Size of Casing, Weight per Foot, New or Second Hand, Depth, Sacks Cement. Rows include 12 1/2" casing at 350 depth and 7 7/8" casing at 4300 depth.

If changes in the above plans become advisable we will notify you iramediately.

ADDITIONAL INFORMATION (If recompletion give full details of proposed plan of work.)

Approved, 19.
Except as follows:

OIL CONSERVATION COMMISSION
By

Sincerely yours,

Sunray DX Oil Company
By B.F. Brawley
District Engineer
Send Communications regarding well to
Name G.T. McClanahan
Address P.O. Box 128, Hobbs, New Mexico

NEW MEXICO OIL CONSERVATION COMMISSION  
WELL LOCATION AND ACREAGE DEDICATION PLAT

FORM C-128  
Revised 5/1/57

SEE INSTRUCTIONS FOR COMPLETING THIS FORM ON THE REVERSE SIDE

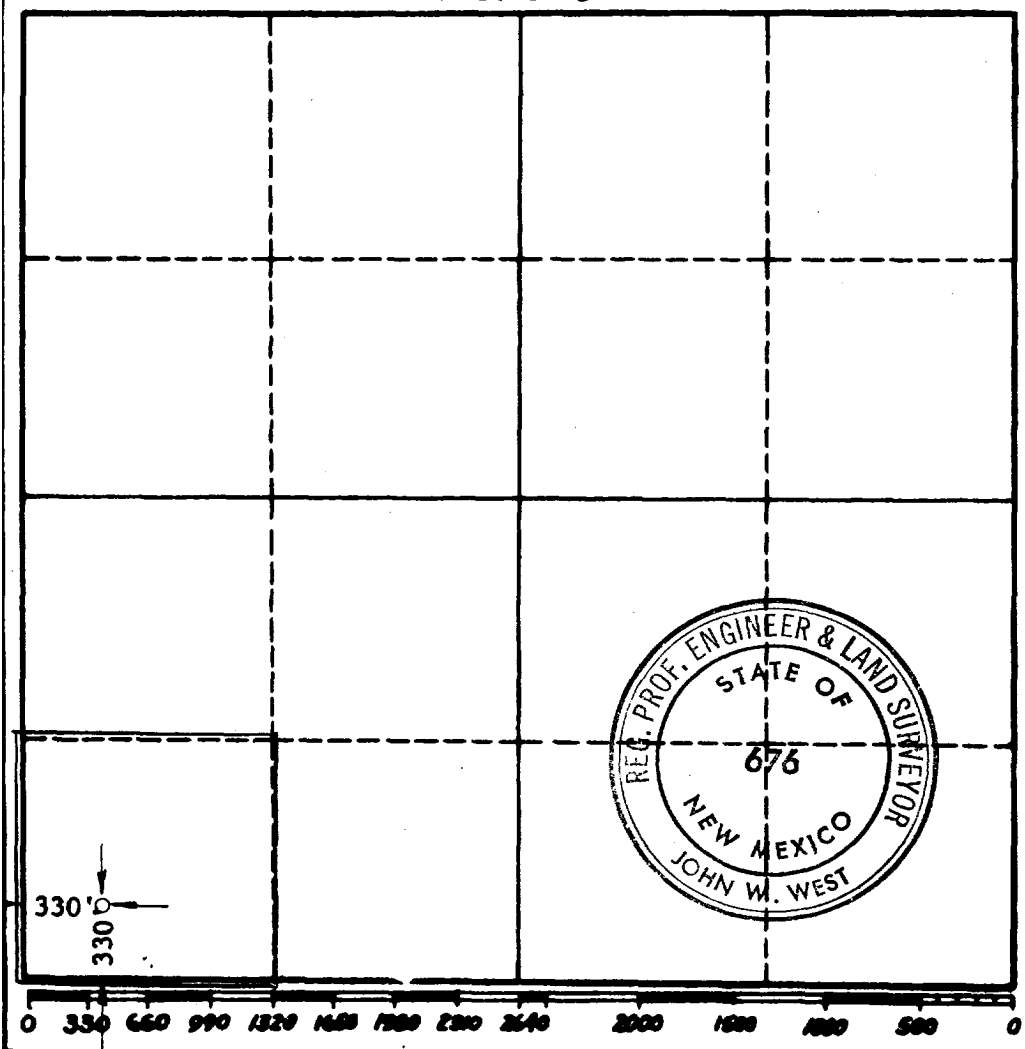
SECTION A

Operator <b>SUNRAY DX OIL COMPANY</b>		Lease <b>STATE AX</b>		Well No. <b>1</b>
Unit Letter <b>M</b>	Section <b>4</b>	Township <b>9 SOUTH</b>	Range <b>32 EAST</b>	County <b>LEA</b>
Actual Footage Location of Well: <b>330</b> feet from the <b>SOUTH</b> line and <b>330</b> feet from the <b>WEST</b> line				
Ground Level Elev. <b>4445 W (Est.)</b>	Producing Formation <b>San Andres</b>		Pool <b>Undesignated</b>	Dedicated Acreage: <b>10</b> Acres

1. Is the Operator the only owner in the dedicated acreage outlined on the plat below? YES ☒ NO \_\_\_\_ ("Owner" means the person who has the right to drill into and to produce from any pool and to appropriate the production either for himself or for himself and another. (65-3-29 (e) NMSA 1935 Comp.)
2. If the answer to question one is "no," have the interests of all the owners been consolidated by communitization agreement or otherwise? YES \_\_\_\_ NO \_\_\_\_ . If answer is "yes," Type of Consolidation \_\_\_\_
3. If the answer to question two is "no," list all the owners and their respective interests below:

Owner	Land Description

SECTION B



CERTIFICATION

I hereby certify that the information in SECTION A above is true and complete to the best of my knowledge and belief.

Name  
**B.F. Brawley**  
Position  
**District Engineer**  
Company  
**Sunray DX Oil Company**  
Date  
**12-17-64**

I hereby certify that the well location shown on the plat in SECTION B was plotted from field notes of actual surveys made by me or under my supervision, and that the same is true and correct to the best of my knowledge and belief.

Date Surveyed  
**1216-64**  
Registered Professional Engineer and/or Land Surveyor, **JOHN W. WEST**  
**John W. West**  
Certificate No.  
**N. M. - P. E. & L. S. NO. 676**