

NO. COPIES RECEIVED	
DISTRIBUTION	
SANTA FE	
FILE	
U.S.G.S.	
LAND OFFICE	
OPERATOR	

NEW MEXICO OIL CONSERVATION COMMISSION

Form C-101
Revised 1-1-65

REENTRY

5A. Indicate Type of Lease
STATE <input checked="" type="checkbox"/> FEE <input type="checkbox"/>
5. State Oil & Gas Lease No.
L - 5284

APPLICATION FOR PERMIT TO DRILL, DEEPEN, OR PLUG BACK

a. Type of Work	b. Type of Well	c. Leasehold Interest	d. Address of Operator	e. Location of Well	f. Unit Letter	g. Located	h. Feet from the	i. North	j. Line	k. And	l. Feet from the	m. West	n. Line of Sec.	o. Twp.	p. Rge.	q. N.M.P.M.	r. Field and Pool, or Wildcat	s. County	t. State	
DRILL <input type="checkbox"/> DEEPEN <input type="checkbox"/> PLUG BACK <input type="checkbox"/>	OIL WELL <input checked="" type="checkbox"/> GAS WELL <input type="checkbox"/> OTHER <input type="checkbox"/>	Yates Petroleum Corporation	207 S. 4th Street, Artesia, NM 88210	UNIT LETTER D LOCATED 990 FEET FROM THE North LINE	990	West	12	11S	37E	N.M.P.M.	Undesignated	Lea	State							
21. Indicate whether DE, RL, etc.										21A. Estimated Depth		21B. Formation		21C. History of C.T.		22. Approx. Date Work will start				
3930' GL										Blanket		11,910		Devonian		Reverse Unit		As soon as possible		

PROPOSED CASING AND CEMENT PROGRAM

SIZE OF HOLE	SIZE OF CASING	WEIGHT PER FOOT	SETTING DEPTH	SACKS OF CEMENT	EST. TOP
17 1/2"	11 3/4"		384	in place (300)	
10 3/4"	8 5/8"		4296	in place (300)	
7 7/8"	5 1/2 or 4 1/2"	17# or 11#	TD		

We propose to drill plug and clean out hole to original TD, then test the Devonian and intermediate formations. If commercial, production casing will be run and cemented with adequate, cover perforate, and stimulate as needed for production. This well was drilled by W.B. Barnhill in May, 1965.

MUD PROGRAM: Native mud to 7600' Gel Starch KCL w/8-9% oil to T.D.

BOP PROGRAM: BOP's and hydril will be installed at the start on the 8 5/8" casing and tested, pipe rams tested daily, blind rams on trips. Will Yellow Jacket prior to drilling Wolfcamp.

IN ABOVE SPACE DESCRIBE PROPOSED PROGRAM: IF PROPOSAL IS TO DEEPEN OR PLUG BACK, GIVE DATA ON PRESENT PRODUCTIVE ZONE AND PROPOSED NEW PRODUCTIVE ZONE. GIVE BLOWOUT PREVENTER PROGRAM, IF ANY.

I hereby certify that the information above is true and complete to the best of my knowledge and belief.

Signed Glen R. Kohn Title Geographer Date Jan. 27, 1981

This space for State Use

APPROVED BY [Signature] TITLE SUPERVISOR DATE

CONDITIONS OF APPROVAL, IF ANY:

NEW MEXICO OIL CONSERVATION COMMISSION
WELL LOCATION AND ACREAGE DEDICATION PLAT

Form C-101
Supersedes C-
Effective 1-1-6

All distances must be from the outer boundaries of the Section.

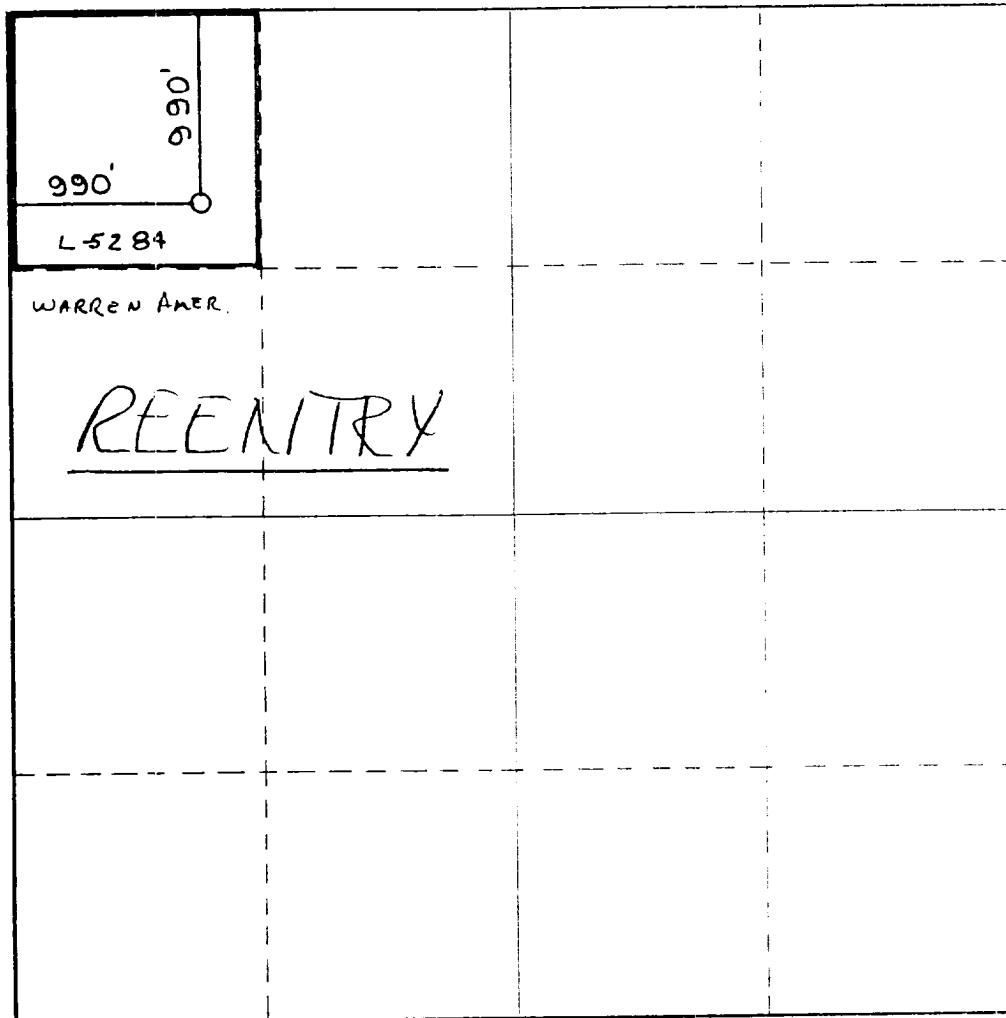
Operator: Yates Petroleum Corporation			Lease: Union State "PE" <i>State</i>		Well No. 1
Unit Letter D	Section 12	Township 11S	Range 37E	County Lea	
Actual Footage Location of Well:					
990 feet from the North		Line and 990 feet from the West		Line	
Ground Level Elev. 3930	Producing Formation Devonian	Depth Undesignated <i>Echo 1 NW</i>		Dedicated Acreage 40	Acres

1. Outline the acreage dedicated to the subject well by colored pencil or hachure marks on the plat below.
2. If more than one lease is dedicated to the well, outline each and identify the ownership thereof (both as to working interest and royalty).
3. If more than one lease of different ownership is dedicated to the well, have the interests of all owners been consolidated by communitization, unitization, force-pooling, etc?

☐ Yes ☐ No If answer is "yes," type of consolidation _____

If answer is "no," list the owners and tract descriptions which have actually been consolidated. (Use reverse side of this form if necessary.) _____

No allowable will be assigned to the well until all interests have been consolidated (by communitization, unitization, forced-pooling, or otherwise) or until a non-standard unit, eliminating such interests, has been approved by the Commission.



CERTIFICATION

I hereby certify that the information contained herein is true and complete to the best of my knowledge and belief.

Gliserio Rodriguez
Name

Gliserio Rodriguez

Location

Geographer

Company

Yates Petroleum Corporation

Date

1-20-81

I hereby certify that the well location shown on this plat was plotted from field notes of actual surveys made by me or under my supervision, and that the same is true and correct to the best of my knowledge and belief.

REFER TO ORIGINAL PLAT

Date Surveyed

Registered Professional Engineer
and/or Land Surveyor

Certificate No.

0 330 660 990 1320 1650 1980 2310 2640 2970 3300 3630 3960 4290 4620 4950 5280 5610 5940 6270 6600