

NEW MEXICO OIL CONSERVATION COMMISSION
WELL LOCATION AND ACREAGE DEDICATION PLAT

Form C-102
Superseded C-128
Effective 1-1-65

All distances must be from the outer boundaries of the Section.

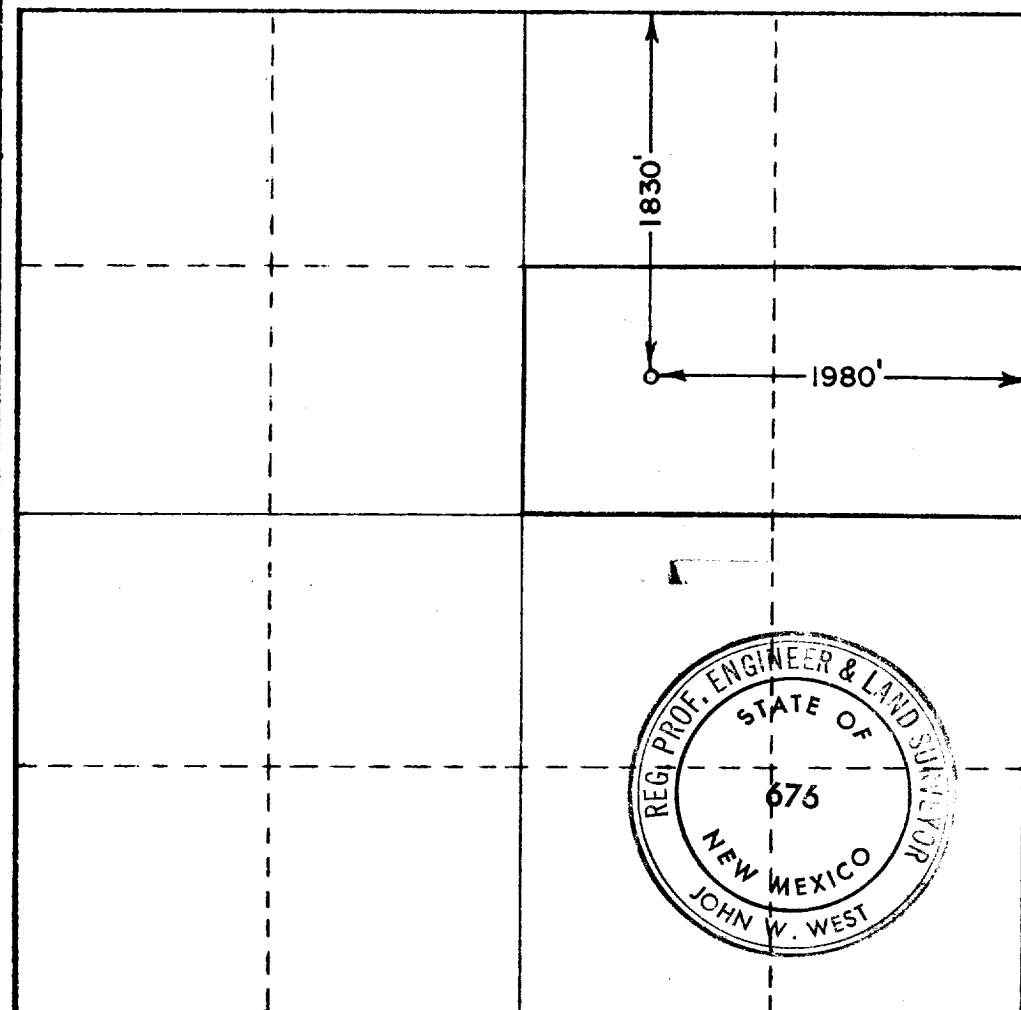
Operator SOUTHLAND ROYALTY CO.			Lease EPFPERSON 11-37-66		Well No. 1
Unit Letter G	Section 24	Township 11 SOUTH	Range 33 EAST	County LEA	
Actual Footage Location of Well:					
1830 feet from the NORTH line and		1980 feet from the EAST line			
Ground Level Elev. 4216.9	Producing Formation Bough "C"	Pool Undesign. (Inbe-Penn.) Ext.	Dedicated Acreage: 80 Acres		

1. Outline the acreage dedicated to the subject well by colored pencil or hatchure marks on the plat below.
2. If more than one lease is dedicated to the well, outline each and identify the ownership thereof (both as to working interest and royalty).
3. If more than one lease of different ownership is dedicated to the well, have the interests of all owners been consolidated by communitization, unitization, force-pooling, etc?

☒ Yes ☐ No If answer is "yes," type of consolidation **Operating Agreement**

If answer is "no," list the owners and tract descriptions which have actually been consolidated. (Use reverse side of this form if necessary.) _____

No allowable will be assigned to the well until all interests have been consolidated (by communitization, unitization, forced-pooling, or otherwise) or until a non-standard unit, eliminating such interests, has been approved by the Commission.



CERTIFICATION

I hereby certify that the information contained herein is true and complete to the best of my knowledge and belief.

Alton C. Goodrich
Name

Alton C. Goodrich

Position

District Prod. Supt.

Company

Southland Royalty Co.

Date

September 23, 1966

I hereby certify that the well location shown on this plat was plotted from field notes of actual surveys made by me or under my supervision, and that the same is true and correct to the best of my knowledge and belief.

Date Surveyed

SEPTEMBER 21, 1966

Registered Professional Engineer and/or Land Surveyor

John W. West
Certificate No.

NM PE & LS No. 676

