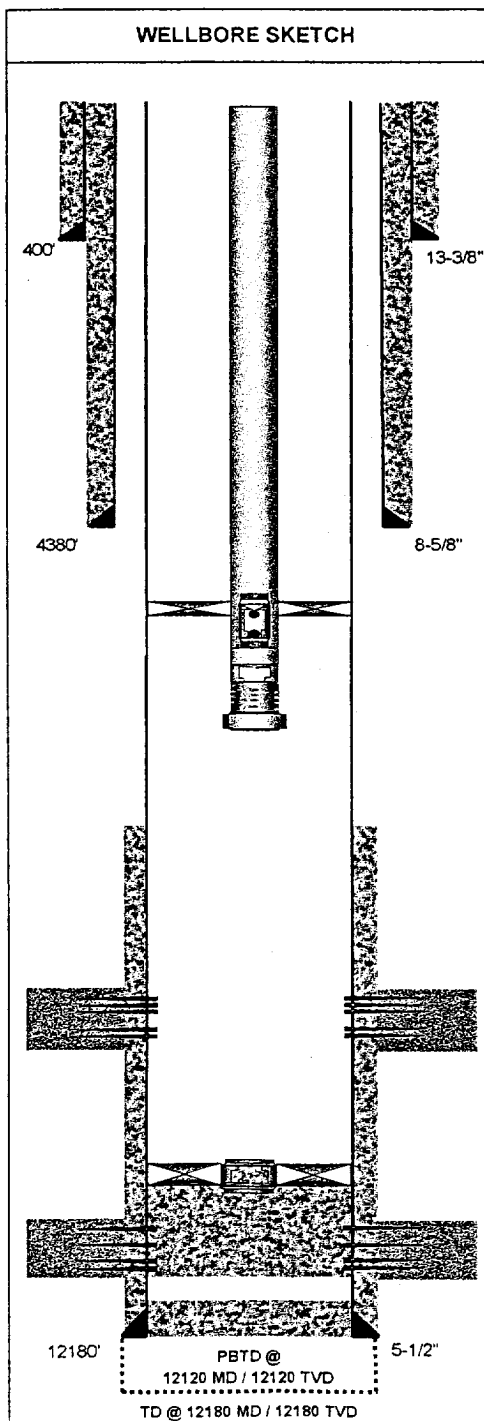
	OPERATOR:	LEASE / WELL:	SURVEY LOCATION:	WELL SKETCH:
	OCEAN ENERGY, INC.	<b>HOOD STATE #1</b>	Sec. 25 - T10S - R37E	PROPOSED COMPLETION
	DRILLING RIG: NABORS RIG 722	COUNTY / STATE:	SURFACE LOCATION:	FIELD:
COMPLETION RIG: LUCKY	EDDY COUNTY, NEW MEXICO	2250' FNL & 2310' FWL	CROSSROADS (PERMIAN)	

DIRECTIONAL DATA				
KOP:	STRAIGHT HOLE			
MAX DEV:	3.50	deg @	11,756	MD
DEV @ PERFS:	-	deg @	0	MD
DEV @ PERFS:	-	deg @	0	MD
DEV @ PERFS:	3.00	deg @	11,902	MD

DRILLING / COMPLETION FLUID	
DRILLING FLUID:	9.60 ppg - (Devonian)
DRILLING FLUID:	0.00 ppg -
DRILLING FLUID:	- ppg -
COMPLETION FLUID:	- ppg -
PACKER FLUID:	8.60 ppg - 2% KCl

TUBULAR DATA					
Tubulars	Size	Weight	Grade	Thread	TVD
DRIVE PIPE					
CONDUCTOR					
SURFACE	13.375	48.000	H-40	STC	400
INTERMEDIATE	8.625	32.000	K-55	LTC	4,380
PRODUCTION	5.500	17.000	N-80	BUTT	850
PRODUCTION	5.500	17.000	N-80	LTC	10,704
PRODUCTION	5.500	17.000	S-95	LTC	12,180
PROD LINER					
TUBING	2.875	6.500	L-80	EUE 8rd	5,000
WORKSTRING					

WELLHEAD DATA	
TYPE	NOT AVAILABLE
WP	
T R E E	FLANGE: C A P THREAD
UBING HANGER:	
BTM FLANGE:	
BPV PROFILE:	
ELEVATIONS:	GROUND ELEVATION
RKB: 3918'	3936'
RKB-ELEV: 18'	



EQUIPMENT DESCRIPTION	O D	I D	LENGTH	DEPTH MD
13-3/8" cemented with 415 sacks. Circulate to Surface.				
8-5/8" cemented with 1515 sacks. Circulate to Surface.				
5-1/2" cemented with 690 sacks.				
FEB 1998 - Drld float collar and cmt down to 12,120'. Perfs 11,986-92' (4spf) using csg gun. No response. Swabbed FL to pkr. 50% oil cut. 400' entry per hour. Perfd 11,993-12,000' (4spf) using csg gun. No response after perfring. AZ w/500 gals 15% NEFE HCl. Swabbed dry, 100% wafer entry. 200' fluid entry per hour. AZ w/750 gals 15% NEFE HCL. Swabbed back load with no show oil or gas. Perfs 12,010-24' (4spf) using csg gun. Swabbed down to SN w/no show. 100' fluid entry per hour. AZ w/500 gals 15% NEFE HCl. Swabbed well w/FL at 850' FS. Oil cut ranging from 40 to 60%. Daily rate - 152 BO & 103 BW. PWOP.				
JAN 2001 - Pulled rods and tubing and TA'd well 01/30/2001.				
ETOC at 10500' based on CBL dated ????				
UPPER DEVONIAN CARBONATE				
Perforations: <del>11902' - 11908' (6' @ 4 spf)</del>				
11912' - 11932' (20' @ 4 spf)				
GOEX 36 gram charge loaded at 4 SPF, 90 degree phasing				
Charge Performance: EHD=0.51" and Penetration=46"				
5-1/2" CIBP	5.500			11,970.00
LOWER DEVONIAN CARBONATE				
Perforations: 11986' - 11992' (6' @ 4 spf)				
11993' - 12000' (7' @ 4 spf)				
12010' - 12024' (14' @ 4 spf)				
COMMENTS:	API # 30-025-34154			PLUG BACK DEPTH: 12,120.00
Drilled to TD 00/00/00 Completed 00/00/00				TOTAL WELL DEPTH: 12,180.00
DRAWING NOT TO SCALE		PREPARED BY:	DATE:	
		ENOS J. FANGUE	September 21, 2002	