

NEW MEXICO OIL CONSERVATION COMMISSION
WELL LOCATION AND ACREAGE DEDICATION PLAN

Form C-102
Supersedes C-128
Effective 1-1-65

All distances must be from the outer boundaries of the Section.

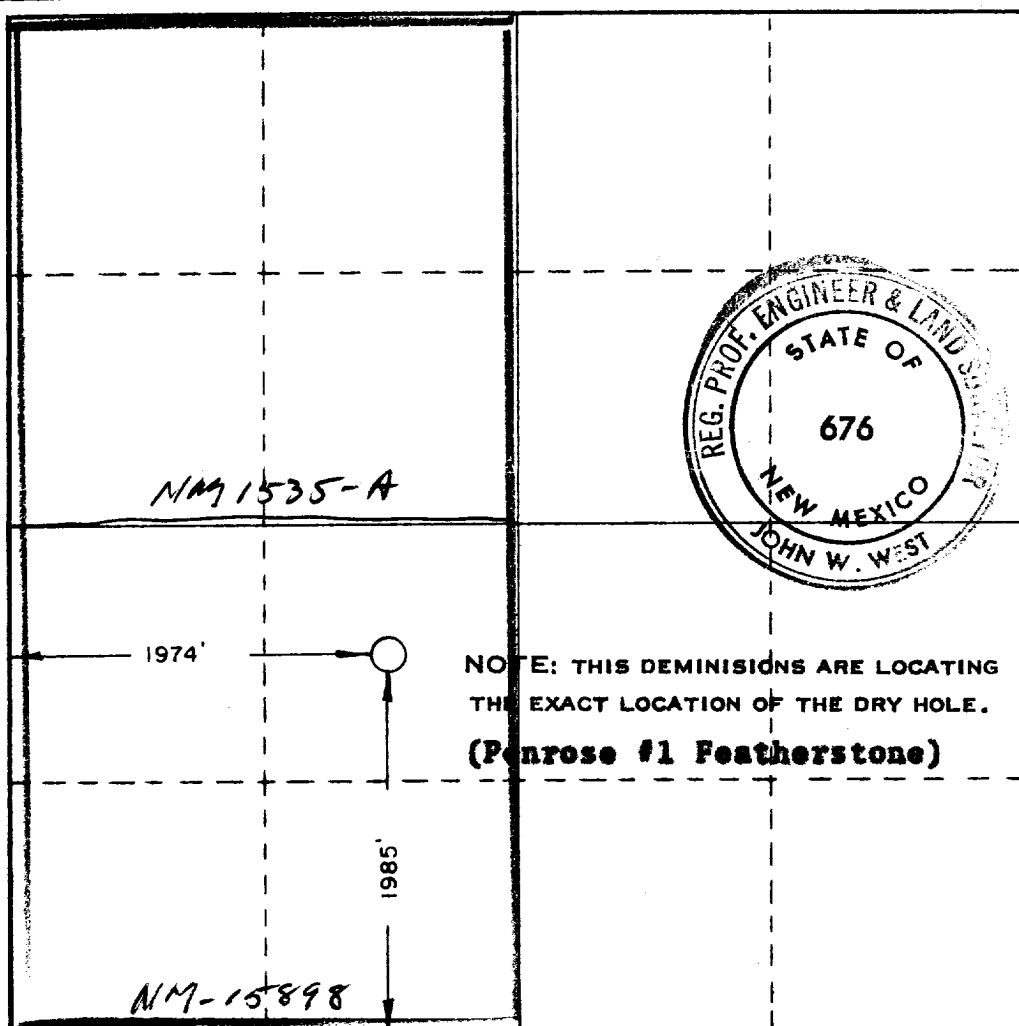
Operator DALPORT OIL CORPORATION			Lease THOMAS FEDERAL			Well No. 1		
Unit Letter K	Section 8	Township 13 SOUTH	Range 31 EAST	County CHAVES				
Actual Footage Location of Well: 1985 feet from the SOUTH line and 1974 feet from the WEST line								
Ground Level Elev. 4048	Producing Formation Queen		Pool Undesignated			Dedicated Acreage: 320 Acres		

1. Outline the acreage dedicated to the subject well by colored pencil or hachure marks on the plat below.
2. If more than one lease is dedicated to the well, outline each and identify the ownership thereof (both as to working interest and royalty).
3. If more than one lease of different ownership is dedicated to the well, have the interests of all owners been consolidated by communitization, unitization, force-pooling, etc?

Yes No If answer is "yes," type of consolidation _____

If answer is "no," list the owners and tract descriptions which have actually been consolidated. (Use reverse side of this form if necessary.) ~~Dalport owns all leases and is currently communitizing them.~~

No allowable will be assigned to the well until all interests have been consolidated (by communitization, unitization, forced-pooling, or otherwise) or until a non-standard unit, eliminating such interests, has been approved by the Commission.



CERTIFICATION

I hereby certify that the information contained herein is true and complete to the best of my knowledge and belief.

Leon M. Lampert
Name

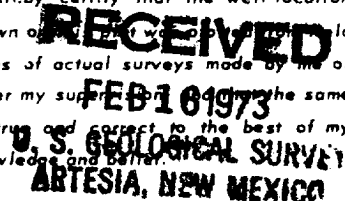
Leon M. Lampert
Position

Geologist
Company

Dalport Oil Corp.
Date

February 14, 1973

I hereby certify that the well location shown on this plat was located in accordance with notes of actual surveys made by me or under my supervision and that the same is true and correct to the best of my knowledge and belief.



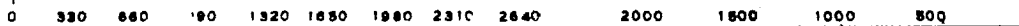
Date Surveyed

FEBRUARY 5, 1973

Registered Professional Engineer and/or Land Surveyor

John W. West
Certificate No.

676



RECEIVED

FEB 19 1962

CH. CONSERVATION COMM.
WASH. D. C.