

# NEW MEXICO OIL CONSERVATION COMMISSION

Santa Fe, New Mexico

## NOTICE OF INTENTION TO DRILL OR RECOMPLETE

Notice must be given to the District Office of the Oil Conservation Commission and approval obtained before drilling or recompletion begins. If changes in the proposed plan are considered advisable, a copy of this notice showing such changes will be returned to the sender. Submit this notice in **QUINTUPPLICATE**. One copy will be returned following approval. See additional instructions in Rules and Regulations of the Commission.

August 1, 1956

(Place)

(Date)

OIL CONSERVATION COMMISSION  
SANTA FE, NEW MEXICO

Gentlemen:

You are hereby notified that it is our intention to commence the (Drilling) (Recompletion) of a well to be known as

Western Drilling Company, Inc.

Gulf State of New Mexico

(Company or Operator)

1

Well No.

in

The well is

(Lease)

South

1900

located feet from the

line and

feet from the

West

line of Section

13

T 13-S

R 31-S

NMPM.

(GIVE LOCATION FROM SECTION LINE)

CAPROCK-QUEEN

Pool

CHAVES

County

If State Land the Oil and Gas Lease is No.

B-8459

If patented land the owner is

Address

We propose to drill well with drilling equipment as follows:

Notary

The status of plugging bond is executed plugging bond (10,000) forwarded for approval to New Mexico Oil Conservation Commission, Santa Fe, New Mexico.

Drilling Contractor

Western Drilling Company, Inc.

We intend to complete this well in the Queen-Sand

formation at an approximate depth of

3200

feet.

### CASING PROGRAM

We propose to use the following strings of Casing and to cement them as indicated:

Size of Hole	Size of Casing	Weight per Foot	New or Second Hand	Depth	Sacks Cement
10 3/4"	8 5/8"	32 lbs.	New	300'	275
6 3/4"	4 1/2"	9.5 lbs.	New	3200'	350

If changes in the above plans become advisable we will notify you immediately.

ADDITIONAL INFORMATION (If recompletion give full details of proposed plan of work.)

Approved \_\_\_\_\_, 19\_\_\_\_  
Except as follows:

OIL CONSERVATION COMMISSION

By

Title

Engineer District 1

Sincerely yours,

WESTERN DRILLING CO., INC.

(Company or Operator)

By

Position

Send Communications regarding well to

Name

Address

NEW MEXICO  
OIL CONSERVATION COMMISSION

Form C-128

Well Location and/or Gas Proration Plat

Date August 6, 1956

Operator Western Drilling Company, Inc. Lease Gulf-State of New Mexico "A"

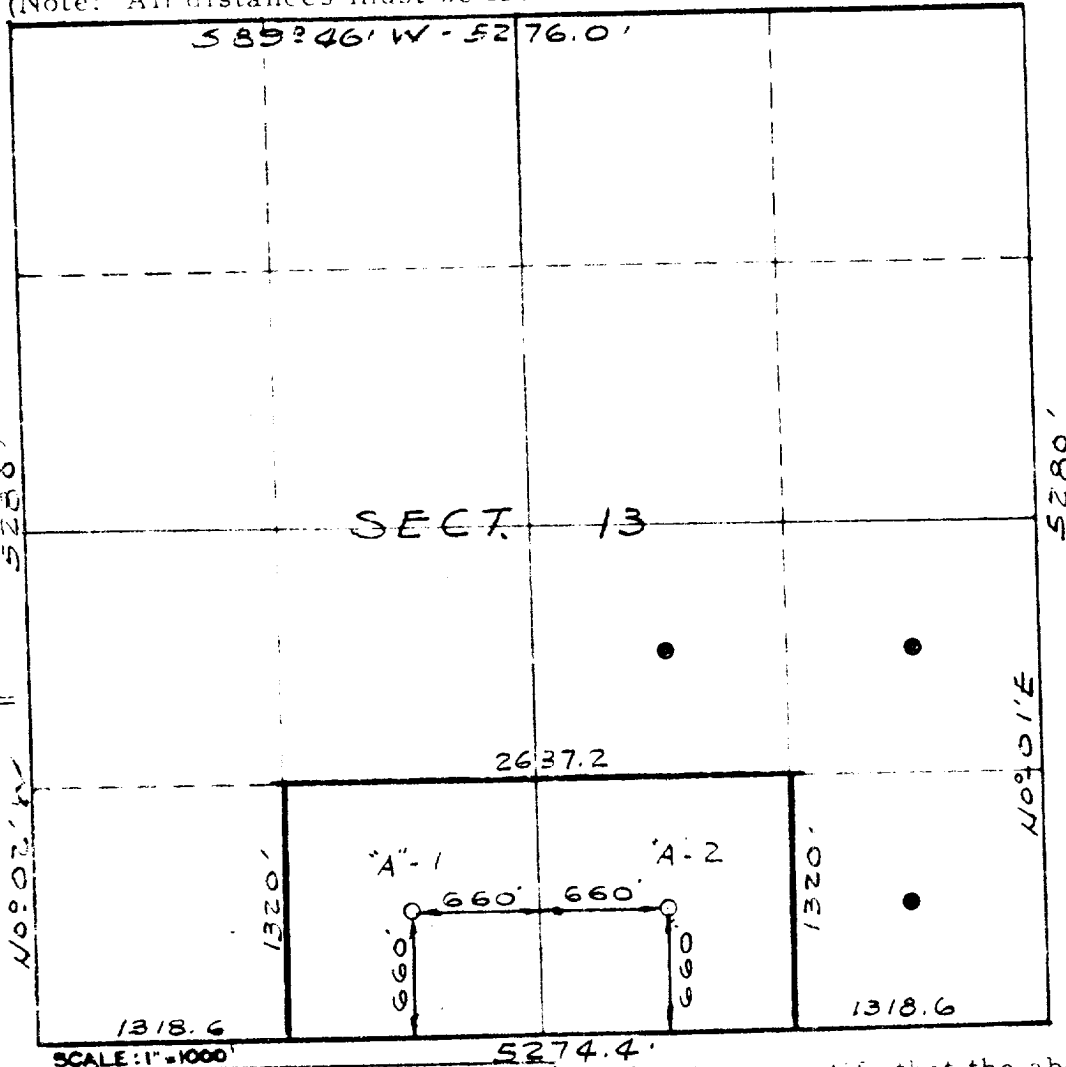
Well Nos. "A" 1 & 2 Section 13 Township 13 S Range 31 E NMPM

Located "A" 1 : 660 Ft from East Line & 860 Ft. from South Line Of S.W. 1/4 Sect. 13  
"A" 2 : 660 Feet From West Line, 660 Feet From South Line, of S.E. 1/4

Chaves County, New Mexico. G. L. Elevation "A" 1 : 4,378.2  
"A" 2 : 4,392.8

Name of Producing Formation Queen Sand Pool Caprock-Queen Dedicated Acreage 79.92

(Note: All distances must be from outer boundaries of Section)



↓  
This section of  
the plat is to be  
used for the  
well location.

- Is this Well a Dual Comp. ? Yes ☐ No ☐
- If the answer to Question 1 is yes, are there any other dually completed wells within the dedicated acreage? Yes ☐ No ☐

Name \_\_\_\_\_  
Position \_\_\_\_\_  
Representing \_\_\_\_\_  
Address \_\_\_\_\_

This is to certify that the above plat was prepared from field notes of actual surveys made by me or under my supervision and that the same are true and correct to the best of my knowledge and belief.

Date Surveyed AUG. 3, 1956  
[Signature]  
Registered Professional Engineer and/or  
Land Surveyor