

COUNTY LEA FIELD Ranger Lake STATE NM
 OPR TEXACO INC. MAP
 1 State of New Mexico "DA" (NCT-1)
 Sec. 14, T-12-S, R-34-E CO-ORD
 660' FNL, 810' FWL of Sec. MN 21707
 Spd 8-6-65 CLASS

CSG & SX . TUBING	FORMATION			
	FORMATION	DATUM	FORMATION	DATUM
Cmp 11-1-65				
11 3/4" 359' 300				
8 5/8" 4200' 1300				
2 7/8" 10400'				
LOGS EL GR RA IND HC A				

TD 10400', PBD 10370'

IP Pennsylvanian Perfs 9960-9986' Pmpd 44 BOPD + 196 BW. Pot.
 Based on 2 1/2 hr test, gravity 49.2, GOR 1800.

Distribution limited and publication prohibited by subscribers' agreement.
 Reproduction rights reserved by Williams & Lee Scouting Service, Inc.

CONT. PROP DEPTH 10,400' TYPE
 DATE

- F.R. 8-5-65; Opr's Elev. 4166' DF
- PD 10,400' - Cisco
- 8-9-65 TD 2795' anhy & salt., prep to drill.
- 8-16-65 Drlg. 4755' lm.
- 8-23-65 Drlg. 7070' lm.
- 8-30-65 Drlg. 8906' im.
- 9-7-65 TD 9600', on DST.
- 9-13-65 Drlg. 10063'.
 DST 9469-9600', open 1 hr 30 mins,
 Rec 30' DM,
 30 min ISIP 13#, FP 13-13#,
 1 hr FSIP 13#.
 DST 9950-9987', open 1 hr 30 mins,
 GTS 7 mins @ TSTM,
 Rec 27 BC + 5 Ebis HOCM,
 30 min ISIP 3392#, FP 172-645#,
 1 hr FSIP 2448#.

8-30-65 Drig. 10330'.
DST 10150-172', pkr failed,
Rec 3090' DM + 300' GCM.
DST 10145-172', pkr failed.
9-27-65 TD 10400', PBD 10370', swbg.
10-4-65 TD 10400', PBD 10370', swbg.
10-11-65 TD 10400', PBD 10370', swbg.
10-18-65 TD 10400', PBD 10370', swbg.
10-25-65 TD 10400', PBD 10370', swbg.
11-1-65 TD 10400', PBD 10370', swbg.
11-8-65 TD 10400', PBD 10370', swbg.
11-15-65 TD 10400', PBD 10370', swbg.
(Holding for additional information)
9-16-66 TD 10400', PBD 10370', COMPLETE.
Perf 10158-166' W/1 SPF

Acid (10158-166') 500 gals.
Swbd 72 BLW + 278 BFW/33 hrs.
Swbd 40 BFW/4 hrs.
Att. to Squeeze perfs 10158-166',
Could not get pump pressure
Set BP @ 10108'
Perf @ 9960', 9962', 9976', 9984', 9986',
9992', 9996', 9998' W/1 SPI
Acid (9960-9998') 200 gals.
Swbd 66 BLW, 334 BNC + 51 BFW/31 hrs.
Swbd 218 BFW/12 hrs.
Ran Tracer
Squeezed perfs 9960-9998' W/30 sx.
Perf @ 9960', 9962', 9976', 9984', 9986',
9992', 9996', 9998' W/1 SPI
Acid (9960-9998') 500 gals.
Swbd 48 BLW + 154 BFW/26 hrs.
Swbd 146 BFW, w/tr. oil in 12 hrs.
Squeezed perfs 9960-9998' W/50 sx.

COUNTY	LFA	FIELD	Ranger Lake	STATE	NM	OWWO
OPR	TEXACO INC.					MAP
1 New Mexico "DA" State (NUT-1)						
Sec. 14, T-12-S, R-34-E						
660' ENL, 810' FWL of Sec.						
Re-Spd 6-1-67						
Re-Cmp 8-1-67						
CLASS <i>OWDF</i> EL <i>[REDACTED]</i>						
		FORMATION	DATUM	FORMATION	DATUM	
CSG & SX - TUBING						
11 3/4"	359'	300				
8 5/8"	4200'	1300				
2 7/8"	10400'	1350				
LOGS EL GR RA IND HC A						
TD 10400', PBD 9884'						
TEMPORARILY ABANDONED						

Distribution limited and publication prohibited by subscribers' agreement.
 Reproduction rights reserved by Williams & Lee Scouting Service, Inc.

CONT _____ PROP DEPTH _____ TYPE WO _____
 DATE _____

F.R.C. 8-1-67; OWWO
 (Orig. Cmp 11-1-65 from Penn. Perfs 9960-9986', OIL 10400', OPB 10370')
 Elev. 4166' DE, Orig.
 8-28-67 TD 10400', PBD 9884', COMPLETE
 Set CIBP @ 9884'
 Perf (Penn) 9602-9608', 9623-9632' w/1 SFF
 Acid (9602-9632') 500 gals.
 Swbd 1 BLW in 4 hrs (9602-9632')
 Swbd dry (9602-9632')

HOBBS OFFICE O. C. C.
OIL CONSERVATION COMMISSION
P. O. BOX 2088
SANTA FE, NEW MEXICO

DEC 2 3 15 PM '65

November 19, 1965

C
O
P
Y
Texaco Inc.
Drawer 728
Hobbs, New Mexico

Attention: Mr. J. G. Blevins, Jr.

Gentlemen:

Reference is made to your letter dated August 23, 1965, wherein you request authority to complete your State of New Mexico "DA" (NCT-1) Well No. 1 located in Unit D, Section 14, Township 12 South, Range 34 East, Lea County, New Mexico, as a tubingless completion in the Ranger Lake, Pennsylvanian Pool.

It is our understanding that 2 7/8 inch casing will be set at approximately 10,400 feet and perforated from approximately 10,000 feet to 10,100 feet in the Pennsylvanian formation. Sufficient cement will be used to come back into the intermediate casing string.

Texaco Inc. is hereby authorized to complete the subject well in the aforesaid manner.

Very truly yours,

A. L. PORTER, Jr.
Secretary-Director

ALP:DSM:sg

c: Oil Conservation Commission (with enclosure) - Hobbs
Oil & Gas Engineering Committee - Hobbs

U.S. CONSERVATION COMMISSION
P.O. BOX 2088
SANTA FE, NEW MEXICO
APR 18 1982

[Faint, mostly illegible text, possibly a letter or report, with some words like 'COMMISSION' and 'SANTA FE' visible.]

115 11 11
'65 AUG 24 11:11

August 23, 1965

New Mexico Oil Conservation Commission
P. O. Box 2088
Hobbs, New Mexico

Re: Application for Single
Tubingless Completion
TEXACO Inc. State of
New Mexico "DA" (NCT-1)
Well No. 1, Ranger Lake
(Pennsylvanian) Field,
Lea County, New Mexico.

Attention: Mr. A. L. Porter, Jr.

Gentlemen:

TEXACO Inc. respectfully requests administrative approval of an exception to Statewide Rule 107(e) to authorize the tubingless completion of State of New Mexico "DA" NCT-1 Well No. 1 in the Ranger Lake (Pennsylvanian) Field. This well is located 810 feet from the west line and 660 feet from the north line of Section 14, Township 12 South, Range 34 East, Lea County, New Mexico.

Surface casing consists of 11-3/4 inch pipe set at 359 feet and cemented to surface with 300 sacks of Class "C" neat cement. Intermediate casing consists of 8-5/8 inch pipe set at 4200 feet and cemented with 1100 sacks of Lite Wate cement followed by 200 sacks of Class "C" neat cement. This cement volume equals 253% of the annular space from the intermediate casing seat to the surface. Production casing is to consist of 2-7/8 inch pipe set at total depth anticipated at 10,400 feet and to be cemented with 1350 sacks of Lite Wate cement followed by 200 sacks of Class "C", 4% gel, cement. This cement volume equals 207% of the calculated annular space from total depth to the intermediate casing.

The first part of the document discusses the importance of maintaining accurate records of all transactions. It emphasizes that every entry should be supported by a valid receipt or invoice. This ensures transparency and allows for easy verification of the data.

In the second section, the author outlines the various methods used to collect and analyze the data. This includes both primary and secondary data collection techniques. The primary data was gathered through direct observation and interviews, while secondary data was obtained from existing reports and databases.

The third section details the statistical analysis performed on the collected data. It describes the use of descriptive statistics to summarize the data and inferential statistics to test hypotheses. The results of these analyses are presented in a clear and concise manner, highlighting the key findings of the study.

Finally, the document concludes with a discussion of the implications of the findings and suggestions for future research. It notes that while the current study provides valuable insights, there are still several areas that require further investigation. The author hopes that this work will contribute to the ongoing discourse in the field.

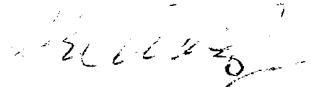
NMOCC

-2-

August 23, 1965

No corrosion or paraffin problems have been encountered in wells previously completed in this field. The New Mexico Oil Conservation Commission has previously authorized the tubingless completion of a well in the Ranger Lake (Pennsylvanian) Field on TEXACO Inc.'s State of New Mexico "CZ" Well No. 1.

Yours very truly,


J. G. Blevins, Jr.
Assistant District Superintendent

WPY:gl

cc: NMOCC-Hobbs
Offset Operators

Attachments

2-7/8" Production casing
 cemented with 1350 sacks of
 Trinity Lite Wate followed
 by 200 sacks Class "C"
 4% gel. Calculated
 cement volume equals
 207% of calculated
 annular volume from TD
 to 4200'.

Oil

11-3/4" Casing set at 359'
 cemented with 300
 sacks Class "C" Neat.
 Cement circulated.

8-5/8" Casing set at 4200'
 Cemented with 1100 sacks
 Trinity Lite Wate followed
 by 200 sacks Class "C"
 neat. Cement volume
 equals 253% of calculated
 annular volume from 4200'
 to surface.

to be
2-7/8" Casing set at

10,400'

Name: Pennsylvanian
 Perforated:

Est. 10,000' - 10,100'

to be
 Total Depth at

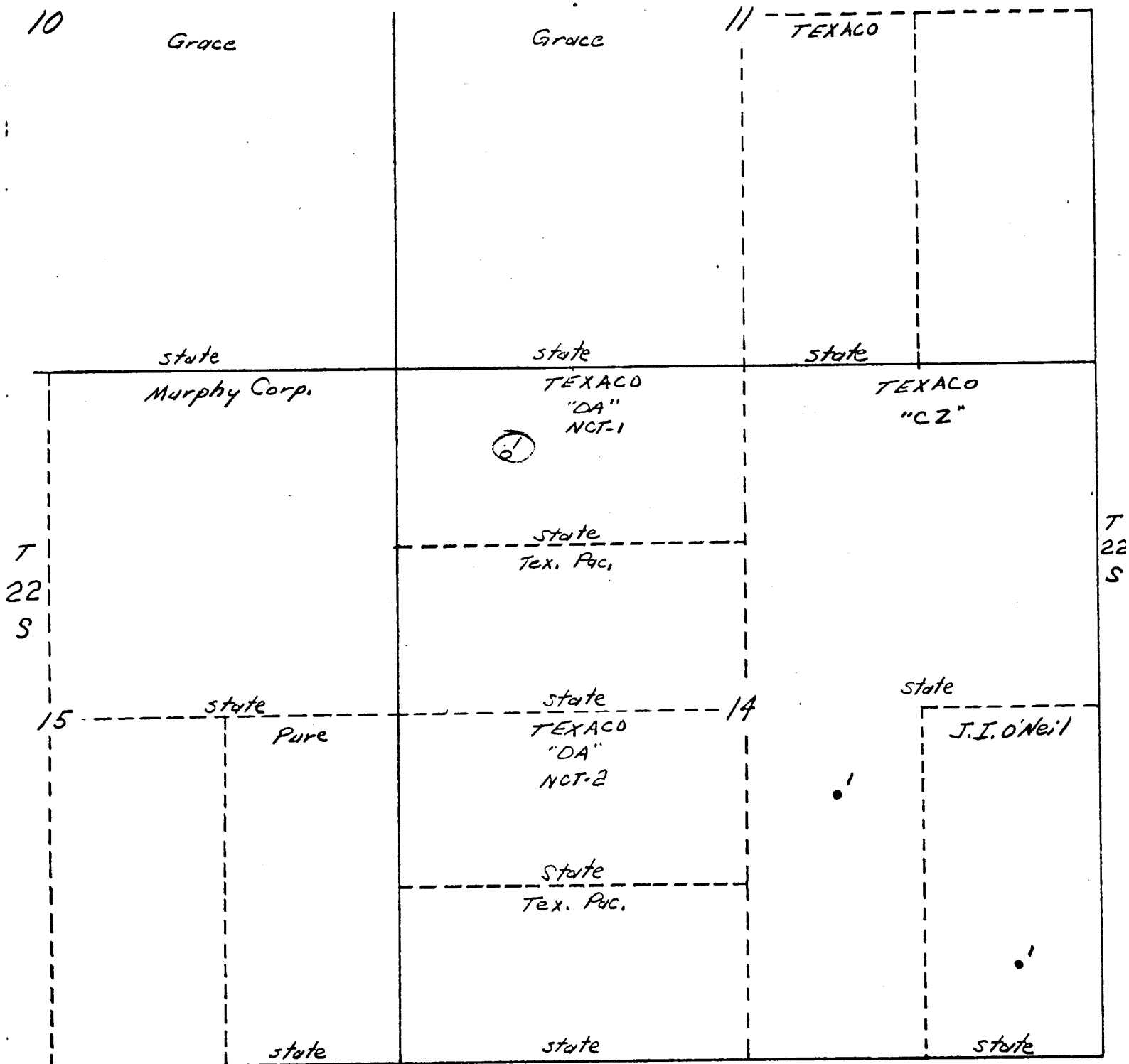
10,400'

TEXACO Inc.

Sketch-Single Tubingless

Name: State of New Mexico "DA" NCT-1 Well No. 1
 Field: Ranger Lake
 Date: August 23, 1965

R-34-E



TEXACO Inc.

Plat

State of New Mexico "DA" NCT-1 Lease

Lea County, New Mexico

Scale: 1" = 1000'

Offset Operators

Pure Oil Company, Box 671, Midland, Texas
 Murphy Oil Corporation, 1417 Sandalwood, Odessa, Texas
 Texas Pacific Oil Company, Box 1069, Hobbs, New Mexico
 Corinne Grace, Address Unknown