

NO. OF COPIES RECEIVED	
DISTRIBUTION	
SANTA FE	
FILE	
U.S.G.S.	
LAND OFFICE	
OPERATOR	

NEW MEXICO OIL CONSERVATION COMMISSION

Form O-101
Revised 1-1-85

1A. Indicate Type of Lease	STATE <input checked="" type="checkbox"/> FEE <input type="checkbox"/>
2. State Oil & Gas Lease No.	K-1038

APPLICATION FOR PERMIT TO DRILL, DEEPEN, OR PLUG BACK

1a. Type of Work		7. Unit Agreement Name	
b. Type of Well DRILL <input checked="" type="checkbox"/> DEEPEN <input type="checkbox"/> PLUG BACK <input type="checkbox"/> OIL WELL <input type="checkbox"/> GAS WELL <input checked="" type="checkbox"/> OTHER <input type="checkbox"/> SINGLE ZONE <input checked="" type="checkbox"/> MULTIPLE ZONE <input type="checkbox"/>		8. Farm or Lease Name State "LP"	
2. Name of Operator Amoco Production Company		9. Well No. 1	
3. Address of Operator P. O. Box 68, Hobbs, NM 88240		10. Field and Pool, or Wildcat Und. Morrow (ND)	
4. Location of Well UNIT LETTER I LOCATED 1980' 2230' FEET FROM THE South LINE AND 660' FEET FROM THE East LINE OF SEC. 32 TWP. 13-S RGE. 34-E NMPM		11. County Lea	
19. Proposed Depth 13,150'		19A. Formation Morrow	
20. Rotary or C.T. Rotary		21. Elevations (Show whether DF, RT, etc.) 4150.9'	
21A. Kind & Status Plug, Bond Blanket-on-file		21B. Drilling Contractor NA	
22. Approx. Date Work will start 2-13-81		23.	

PROPOSED CASING AND CEMENT PROGRAM

SIZE OF HOLE	SIZE OF CASING	WEIGHT PER FOOT	SETTING DEPTH	SACKS OF CEMENT	EST. TOP
17-1/2"	13-3/8"	48#	350'	Circulate	Surface
12-1/4"	8-5/8"	36#	4300'	Tie back to 13-3/8"	350'
7-7/8"	5-1/2"	17#	13,150'	Cement to 500' above Wolfcamp	8880'

Propose to drill and equip well in the Morrow formation. After reaching TD, logs will be run and evaluated. Will perforate and stimulate as necessary in attempting commercial production.

Mud Program: 0-350' Native mud and fresh water
350-4300' Native mud and brine
4300-13,150' Commercial mud and brine with minimum properties for safe hole conditions. Will raise viscosity and reduce water loss prior to Morrow penetration.

BOP Program attached
Gas is not dedicated

APPROVAL VALID FOR 180 DAYS
PERMIT EXPIRES 8/10/81
UNLESS DRILLING UNDERWAY

O+6-NMOCD, H 1-Hou 1-Susp 1-W. Stafford, Hou 1-LBG

IN ABOVE SPACE DESCRIBE PROPOSED PROGRAM: IF PROPOSAL IS TO DEEPEN OR PLUG BACK, GIVE DATA ON PRESENT PRODUCTIVE ZONE AND PROPOSED NEW PRODUCTIVE ZONE. GIVE BLOWOUT PREVENTER PROGRAM, IF ANY.

I hereby certify that the information above is true and complete to the best of my knowledge and belief.

Signed Benton Green Title Asst. Admin. Analyst Date 2-10-81

(This space for State Use)

APPROVED BY [Signature] TITLE SUPERVISOR DISTRICT 1 DATE FEB 10 1981

CONDITIONS OF APPROVAL, IF ANY:

**MEXICO OIL CONSERVATION COMMISSION
WELL LOCATION AND ACREAGE DEDICATION PLAT**

Form C-102
Supersedes C-128
Effective 1-1-85

All distances must be from the outer boundaries of the Section

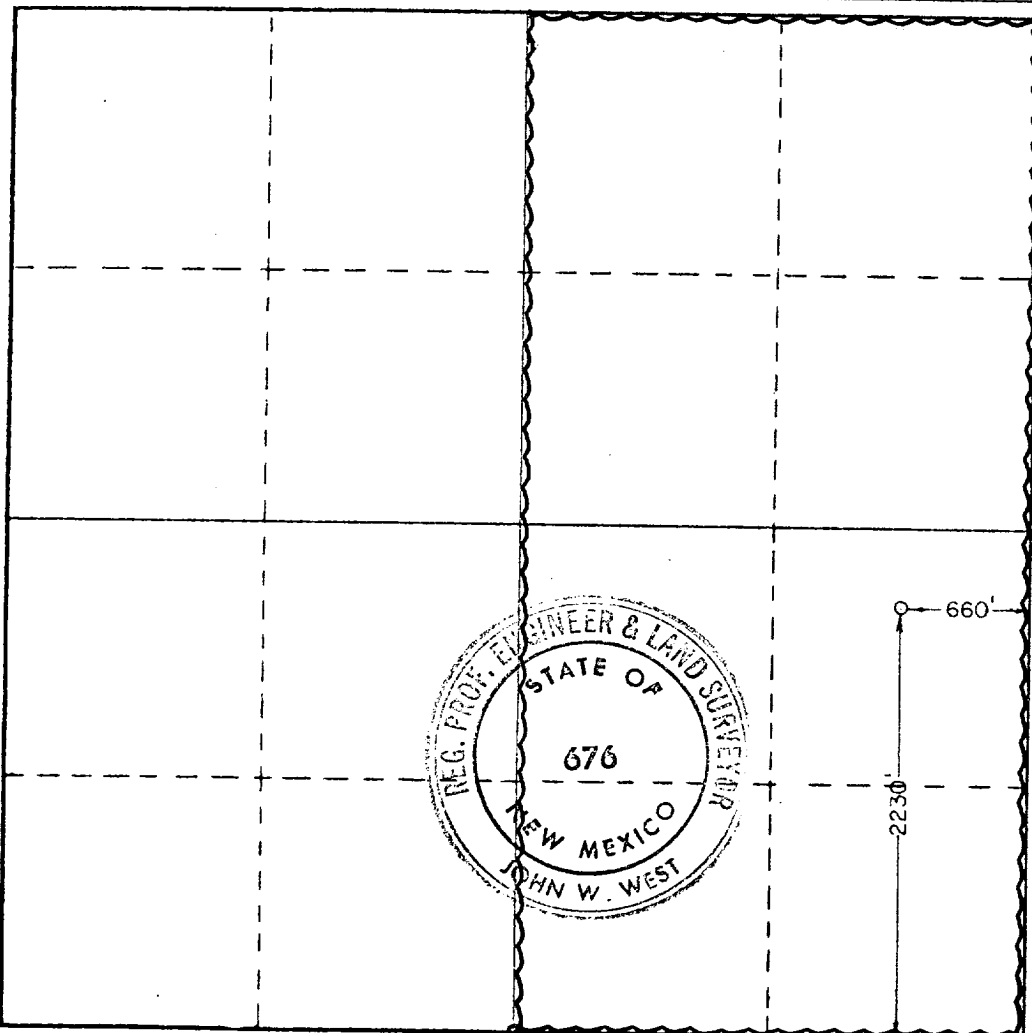
Operator AMOCO Production Co.			Lease State LP		Well No. 1
Unit Letter I	Section 32	Township 13 South	Range 34 East	County Lea	
Actual Footage Location of Well: 2230 feet from the South line and 660 feet from the East line					
Ground Level Elev. 4150.9	Producing Formation Morrow		Pool Und. Morrow		Dedicated Acreage: 320

1. Outline the acreage dedicated to the subject well by colored pencil or hatchure marks on the plat below.
2. If more than one lease is dedicated to the well, outline each and identify the ownership thereof (both as to working interest and royalty).
3. If more than one lease of different ownership is dedicated to the well, have the interests of all owners been consolidated by communitization, unitization, force-pooling, etc?

☐ Yes ☐ No If answer is "yes," type of consolidation _____

If answer is "no," list the owners and tract descriptions which have actually been consolidated. (Use reverse side of this form if necessary.) _____

No allowable will be assigned to the well until all interests have been consolidated (by communitization, unitization, forced-pooling, or otherwise) or until a non-standard unit, eliminating such interests, has been approved by the Commission.



CERTIFICATION

I hereby certify that the information contained herein is true and complete to the best of my knowledge and belief.

Name Benton Greer
 Position Assistant Admin. Analyst
 Company Amoco Production Company
 Date 2-10-81

I hereby certify that the well location shown on this plat was plotted from field notes of actual surveys made by me or under my supervision, and that the same is true and correct to the best of my knowledge and belief.

Date Surveyed February 10, 1981
 Registered Professional Engineer and/or Land Surveyor

John W. West
 Certificate No. JOHN W. WEST 676
PATRICK A. ROMERO 6683
Ronald J. Eidson 3239

0 330 660 990 1320 1650 1980 2310 2640 2970 3300 3630 3960 4290 4620 4950 5280 5610 5940 6270 6600

3000# W.P. TWO-RAM BOP

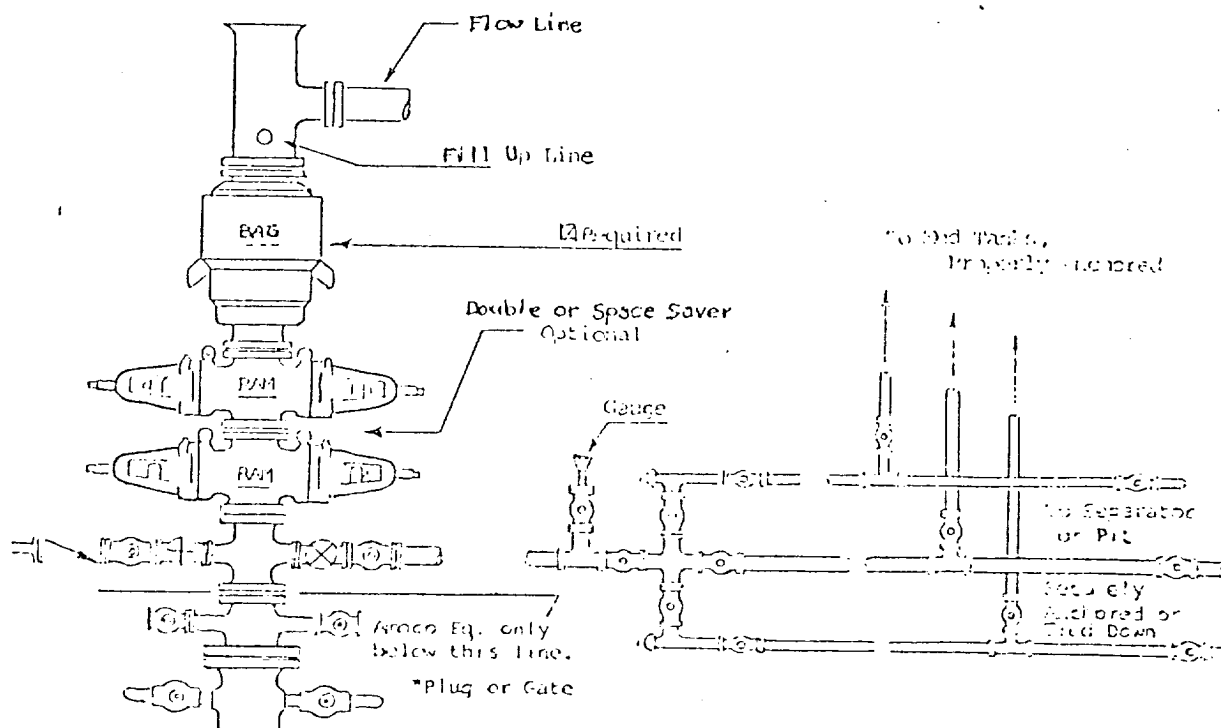
1. BOP'S TO BE FLUID OPERATED.
2. BOP'S AND ALL FITTINGS MUST BE IN GOOD CONDITION AND RATED AT 3000 PSI W.P. MINIMUM.
3. EQUIPMENT THROUGH WHICH BIT MUST PASS SHALL BE AT LEAST AS LARGE AS CASING SIZE BEING DRILLED THROUGH.
4. NIPPLE ABOVE BOP'S SHALL BE SAME SIZE AS LAST CASING SET.
5. UPPER KELLY COCK IS REQUIRED AND SHALL BE 3000# W.P. MINIMUM.
6. T. I. W. OR COMPARABLE SAFETY VALVE SHALL BE AVAILABLE ON RIG FLOOR WITH CONNECTION OR SUBS TO FIT ANY TOOL JOINT IN THE STRING. VALVE TO BE FULL BORE 5000# MIN.
7. VALVE NEXT TO SPOOL SHALL BE 4". OTHER EQUIPMENT MAY BE 3" OR 4". ALL CHOKE MANIFOLD EQUIPMENT SHALL BE FLANGED. FLOW LINE FROM MANIFOLD TO BE MINIMUM OF 3" AND STRAIGHT AS POSSIBLE WITH MINIMUM BENDS.
8. FLUID LINES FROM ACCUMULATOR TO BOP'S AND ALL REMOTE CONTROL FLUID LINES SHALL BE STEEL, AND RATED AT OR ABOVE MAXIMUM ACCUMULATOR PRESSURE. LINES SHALL BE ROUTED IN BUNDLES AND ADEQUATELY PROTECTED FROM DAMAGE.
9. USE RAMS IN FOLLOWING POSITIONS:*

	<u>DRILLING</u>	<u>RUNNING CASING</u>
UPPER RAM	DRILL PIPE	CASING
LOWER RAM	BLIND	BLIND

*AMOCO AREA SUPT. MAY REVERSE LOCATION OF RAMS.

10. CHOKE MANIFOLD, BEYOND SECOND VALVE FROM CROSS MAY BE OPTIONALLY POSITIONED OUTSIDE OF SUBSTRUCTURE.
11. EXTENSIONS AND HAND WHEELS TO BE INSTALLED AND BRACED AT ALL TIMES.
12. TWO INCH (2") LINES AND VALVES ARE PERMITTED ON THE KILL LINE.

NOTE: ALL UNMARKED VALVES MAY BE PLUG OR GATE VALVE, METAL TO METAL SEAL.



COUNTY LEA FIELD Undesignated STATE NM

OPR AMOCO PRODUCTION CO. API 30-025-27272

NO 1 LEASE State "LP" MAP

Sec 32, T13S, R34E COORD 10-1-8 NM

2230 FSL, 660 FEL of Sec SPD 2-25-81 CMP 8-18-81

20 mi SE/Caprock

CSC

13 3/8-375-325 sx

8 5/8-4243-3110 sx

5 1/2-11,360-575 sx

WELL CLASS: INIT D FIND		LSE. CODE	
FORMATION	DATUM	FORMATION	DATUM

TO 13,200 (MRRW) PHD

DRY & ABANDONED

CONTR MGF #22 OPRSECTY 4150 GL sub-s 14

F.R. 2-16-81

PD 13,150 RT (Morrow)

2-27-81 TD 375; DOC

3-3-81 Drlg 2920 redbed & salt

3-12-81 Mud wt 9.7, vis 30, Bit #3 (12 1/2-PP3)

Drlg 4253 anhy

3-20-81 Mud wt 10, vis 32, Bit #5 (7 7/8-PP5)

Drlg 6591 sh

3-24-81 Mud wt 9.2, vis 20, Bit #8 (7 7/8-PP8)

Drlg 7615 sh

4-1-81 Mud wt 9.4, vis 33, Bit #9 (7 7/8-PP 63)

Drlg 9310 lm & sh

4-8-81 Mud wt 9.8, vis 31, Bit #11 (7 7/8-PP 63)

Drlg 10,646 lm

Mud wt 9.4, vis 31, Bit #12 (7 7/8-PP 63)

Drlg breaks 10,010-015, 10,369-376, 10,411-418,

10,456-461, no shows

10-1-8 NM

LEA
AMOCO PRODUCTION CO.

Undesignated
1 State "LP"
Sec 32, T13S, R34E

NM
Page #2

4-16-81 TD 10,831; Circ
Mud wt 9.6, vis 48
Stuck DP @ 10,811
4-27-81 TD 10,831; STTD 9794; Rng Magnet
Set plug @ 9734 & drld off
Lost Cones in hole
5-7-81 TD 10,831; Drlg by @ 10,176 sh
Mud wt 10, vis 41, Bit #17 (7 7/8-J55)
5-12-81 TD 10,831; Drlg by @ 10,525 lm & sh
Mud wt 9.4, vis 38, Bit #18 (7 7/8-HTM)
5-20-81 Drlg 11,350 lm & sh
Mud wt 10.2, vis 45, Bit #19 (7 7/8-J440)
5-22-81 Drlg 11,469 sh, lm & cht
10-1-8 NM

5-22-81 Continued
Mud wt 9.9, vis 39, Bit #20 (7 7/8-J55)
6-2-81 Drlg 11,525 sh & lm
Mud wt 9.8, vis 37, Bit #21 (7 7/8-J55)
6-8-81 Drlg 13,074 lm & sh
Mud wt 10.3, vis 40, Bit #22 (7 7/8-J55)
6-11-81 TD 13,200; Rng Logs
6-22-81 TD 13,200; PBD 11,360; WOCU
PB to 11,360
7-31-81 TD 13,200; PBD 11,300; Rng Tpe
Perf (Strawn) 11,238-252, 11,258-264
8-13-81 TD 13,200; PBD 11,000; Swbg
Acid (11,238-264) 3000 gals + 1000 sol N2 per
Bbl
Swbd 65 BU in 8 hrs (11,238-264)
CIBP @ 11,065
10-1-8 NM

LEA

AMOCO PRODUCTION CO.

Undesignated

1 State "LP"

Sec 32, T13S, R34E

NM

Page #3

8-13-81

Continued

Perf (Wolfcamp) 10,896-908, 10,912-918
w/2 SPF

Acid (10,896-918) 3750 gals

Swbd 113 BW in 7 hrs (10,896-918)

8-19-81

TD 13,200; FBD 10,848; SI

CIBP @ 10,848

Perf (Wolfcamp) 10,770-808 w/2 SPF

Swbd 110 BW in 9 hrs (10,770-808)

9-28-81

TD 13,200; D- & Abandoned

LOG TOPS: Gloria 5800, Tuh 7188, 7190, 7192, 7194, 7196, 7198, 7200, Abo 7840, Wolfcamp 8460, Strawn 13,248

Chester 13,180, Aroka 13,248

10-1-8 NM

9-28-81

Continued

LOGS RIN: GR, CCI

Rig Released 9-13-81

10-3-81

COMPLETION 180000

10-1-8 NM

10-1-8 NM