

NEW MEXICO OIL CONSERVATION COMMISSION
WELL LOCATION AND ACREAGE DEDICATION PLAT

Form C-102
Supersedes C-128
Effective 1-1-65

All distances must be from the outer boundaries of the Section

Operator Sun Exploration & Production Co.		Lease New Mexico "R" State		Well No. 3
Unit Letter K	Section 33	Township 13 South	Range 34 East	County Lea

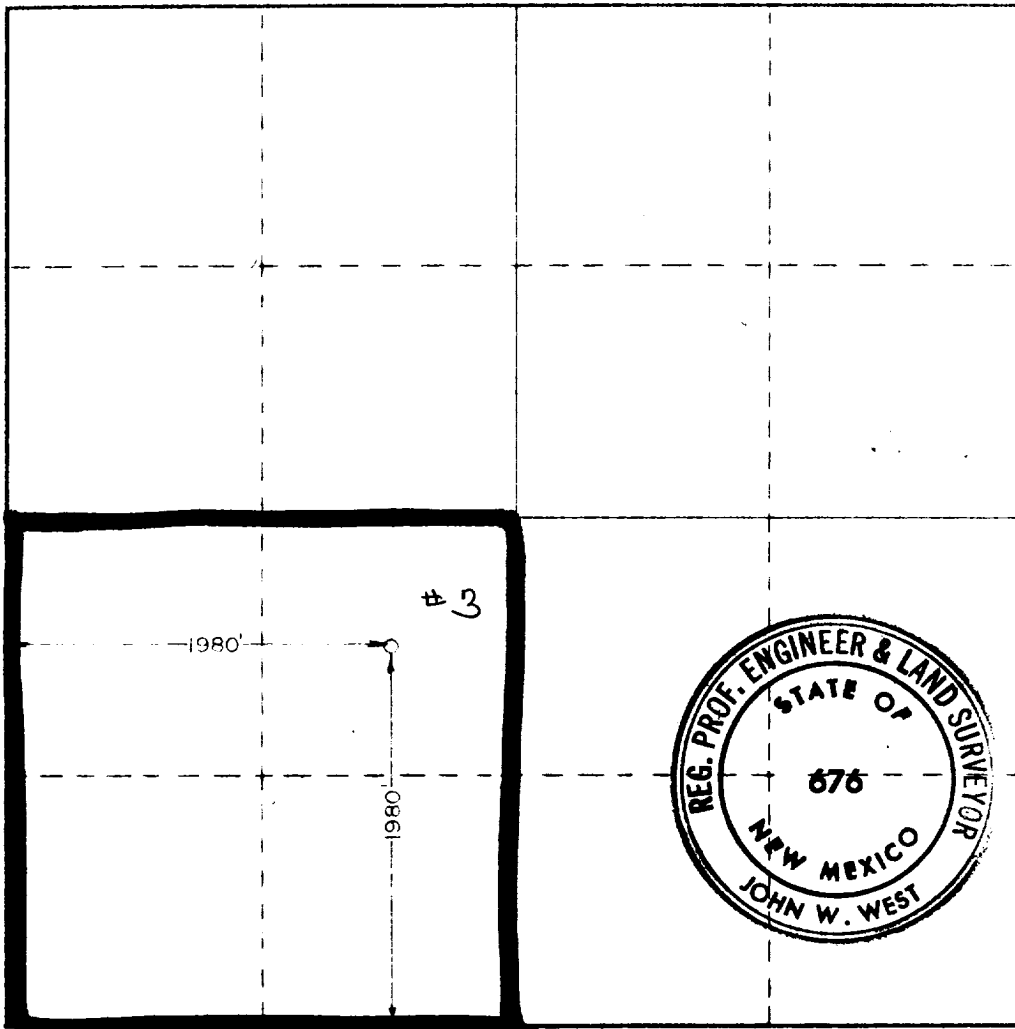
Actual Footage Location of Well:				
1980	feet from the	South	line and	1930
				feet from the
				West
Ground Level Elev. 4142.4	Producing Formation Wolfcamp / Penn		Pool Cerca (Upper Penn Wolfcamp)	Acres 160

1. Outline the acreage dedicated to the subject well by colored pencil or hatchure marks on the plat below.
2. If more than one lease is dedicated to the well, outline each and identify the ownership thereof (both as to working interest and royalty).
3. If more than one lease of different ownership is dedicated to the well, have the interests of all owners been consolidated by communitization, unitization, force-pooling, etc?

☐ Yes ☐ No If answer is "yes," type of consolidation _____

If answer is "no," list the owners and tract descriptions which have actually been consolidated (Use reverse side of this form if necessary.) _____

No allowable will be assigned to the well until all interests have been consolidated (by communitization, unitization, forced-pooling, or otherwise) or until a non-standard unit, eliminating such interests, has been approved by the Commission.



CERTIFICATION

I hereby certify that the information contained herein is true and complete to the best of my knowledge and belief

Dee Ann Kemp
Signature
Dee Ann Kemp
Name
Accounting Asst. II
Position
Sun Exploration & Production
Company
Date
7-21-82

I hereby certify that the well location shown on this plat was plotted from field notes of actual surveys made by me or under my supervision, and that the same is true and correct to the best of my knowledge and belief.

Date Surveyed
7-12-82
Registered Professional Engineer and/or Land Surveyor
John W. West
Signature
Certificate No. **JOHN W. WEST 676**
PATRICK A. ROMERO 6668
Ronald J. Eidson 3239



RECEIVED

JUL 22 1982

G.C.D.
HOBBS OFFICE

173