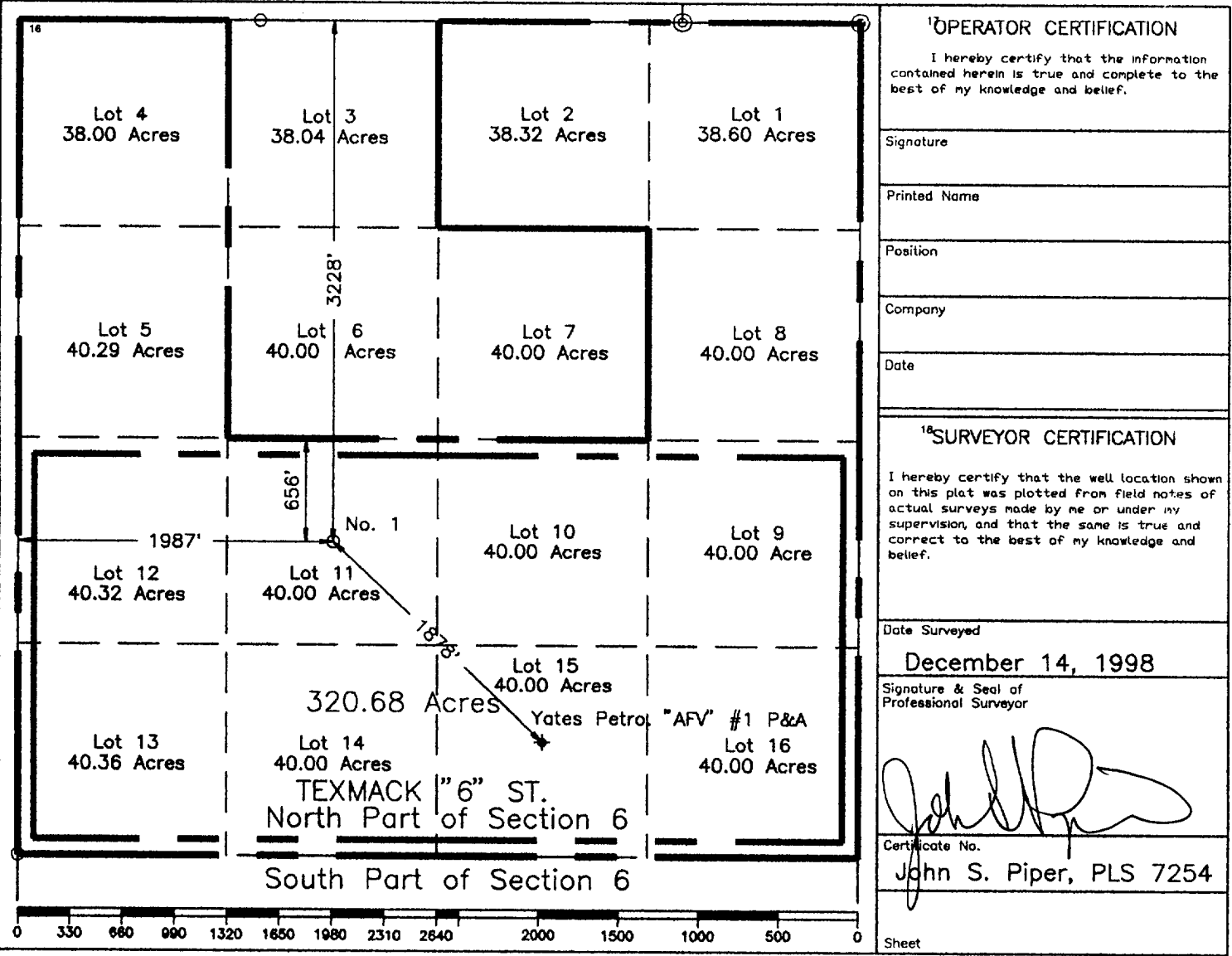


WELL LOCATION AND ACREAGE DEDICATION PLAT

☐ AMENDED REPORT

1 API Number		2 Pool Code		3 Pool Name Anderson Ranch West (Penn)					
4 Property Code		5 Property Name Texmack "6" State						6 Well Number 1	
7 OGRID No. 22351		8 Operator Name Texaco Exploration & Production Inc.						9 Elevation 4383	
10 Surface Location									
UL or lot no. K	Section 6	Township 16-S	Range 32-E	Lot Idn 11	Feet from the 3228'	North/South line North	Feet from the 1987'	East/West line West	7 County Lea
11 Bottom Hole Location If Different From Surface									
UL or lot no.	Section	Township	Range	Lot Idn	Feet from the	North/South line	Feet from the	East/West line	7 County
12 Dedicated Acres 320.68		13 Joint or Infill		14 Consolidation Code		15 Order No.			

NO ALLOWABLE WILL BE ASSIGNED TO THIS COMPLETION UNTIL ALL INTERESTS HAVE BEEN CONSOLIDATED
OR A NON-STANDARD UNIT HAS BEEN APPROVED BY THE DIVISION.



○ = Staked Location ● = Producing Well ↗ = Injection Well ◇ = Water Supply Well ◆ = Plugged & Abandon Well
⊙ = Found Section Corner, 2 or 3" Iron Pipe & GLO B.C. ○ = Found 1/4 Section Corner, 1" Iron Pipe & GLO B.C.

ADDITIONAL INFORMATION ON THE LOCATION

State Plane Coordinates			
Northing 772,011.56		Easting 700,482.83	
Latitude 32°57'22.408"		Longitude 103°48'29.123"	
Zone East	North American Datum 1983 NAD	Combined Grid Factor 0.99976969	Coordinate File Texmack6.cr5
Drawing File TEXMK6_1.DWG		Field Book Lea County Field Book 19, Pages 3-9	