

District I
P. O. Box 1980, Hobbs, NM 88241-1980
District II
P. O. Drawer DD, Artesia, NM 88211-0719
District III
1000 Rio Brazos Rd., Aztec, NM 87410
District IV
P. O. Box 2088, Santa Fe, NM 87504-2088

State of New Mexico
Energy, Minerals & Natural Resources Department
OIL CONSERVATION DIVISION
P. O. Box 2088
Santa Fe, NM 87504-2088

Form C-101
Revised February 10, 1994
Instructions on back
Submit to Appropriate District Office
State Lease - 6 Copies
Fee Lease - 5 Copies

☐ AMENDED REPORT

APPLICATION FOR PERMIT TO DRILL, RE-ENTER, DEEPEN, PLUGBACK, OR ADD A ZONE

¹ Operator Name and Address. The Wiser Oil Company c/o J. O. Easley, Inc., P. O. Box 1796 Roswell, NM 88202-1796		² OGRID Number 22922
		³ API Number 30-025 - 00528
⁴ Property Code 14578	⁵ Property Name Caprock Maljamar Unit	⁶ Well No. 13

⁷ Surface Location

UL or lot no.	Section	Township	Range	Lot Idn	Feet from the	North/South Line	Feet from the	East/West line	County
J	13	17S	32E		1980	South	1980	East	Lea

⁸ Proposed Bottom Hole Location If Different From Surface

UL or lot no.	Section	Township	Range	Lot Idn	Feet from the	North/South Line	Feet from the	East/West line	County

⁹ Proposed Pool 1

Maljamar Grayburg San Andres 43329

¹⁰ Proposed Pool 2

¹¹ Work Type Code E	¹² Well Type Code I	¹³ Cable/Rotary R	¹⁴ Lease Type Code S	¹⁵ Ground Level Elevation 4110'
¹⁶ Multiple No	¹⁷ Proposed Depth 4700'	¹⁸ Formation Grayburg & San Andres	¹⁹ Contractor	²⁰ Spud Date ASAP

²¹ Proposed Casing and Cement Program

Hole size	Casing Size	Casing weight/foot	Setting Depth	Sacks of Cement	Estimated TOC
Existing 12 1/4"	8 5/8"	32.5#	207'	125	
Existing 7 7/8"	5 1/2"	14#	4430'	150	2550'

²² Describe the proposed program. If this application is to DEEPEN or PLUG BACK give the data on the present productive zone and proposed new productive zone. Describe the blowout prevention program, if any. Use additional sheets if necessary.

Re-enter Murphy H. Baxter State 13 #4 Well P&A'd in 1984. Clean out & deepen to approximately 4700'. Log. If casing is corroded, run liner with sufficient amount of cement to circulate to surface. Perforate Grayburg and San Andres field pays. Stimulate as necessary. Complete as water injection well

Permit Expires 1 Year From Approval
Date Unless Drilling Underway

Blow Out Prevention: See attached.

²³ I hereby certify that the information given above is true and complete to the best of my knowledge and belief.

Signature: *Michael R. Burch*

Printed name: Michael R. Burch, CPL

Title: Agent for The Wiser Oil Company

Date: 7-18-96

Phone: (505) 623-3758

OIL CONSERVATION DIVISION

Approved by: *[Signature]*

Title:

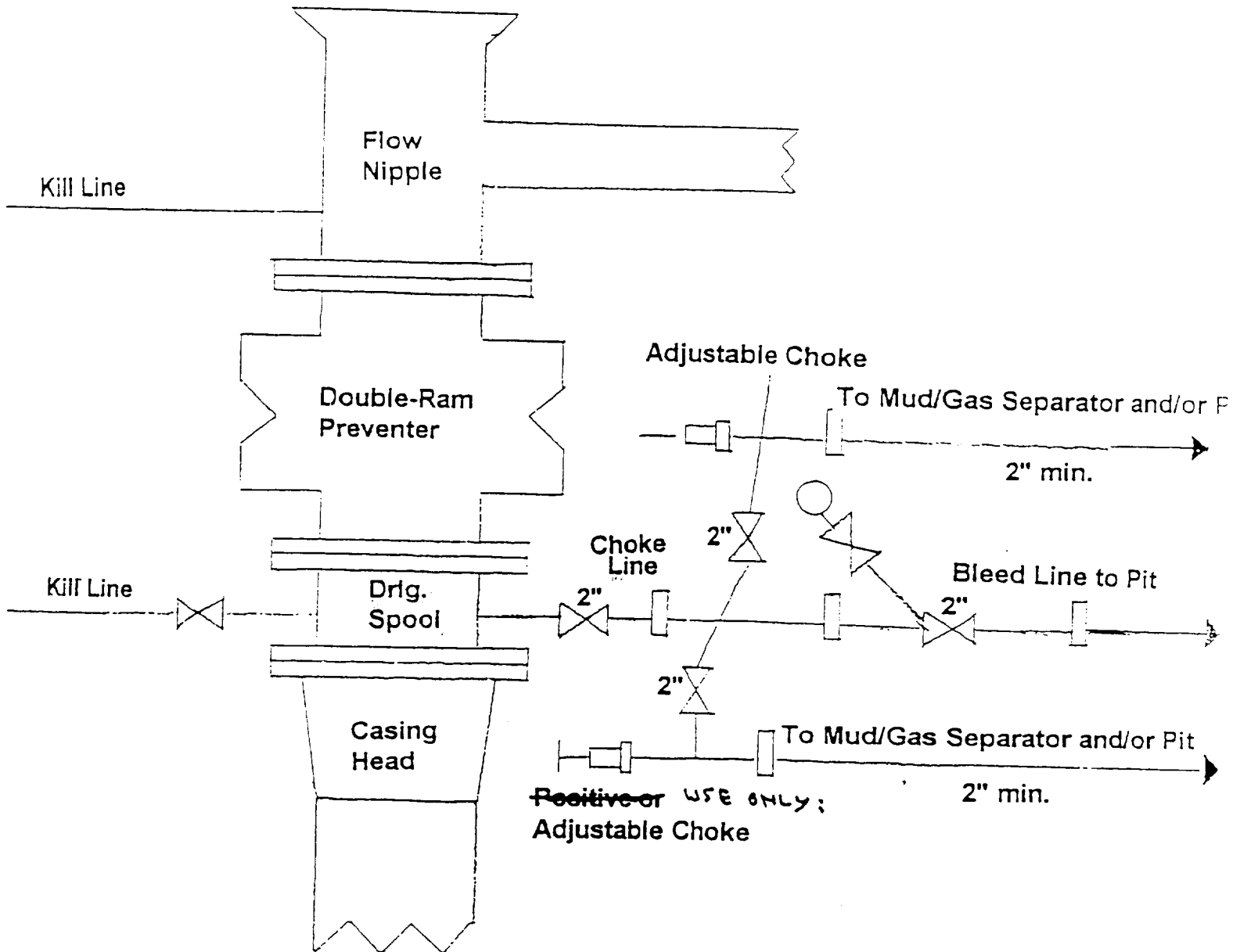
Approval Date: JUL 23 1996

Expiration Date:

Conditions of Approval:
Attached ☐

BOP & CHOKE MANIFOLD

12"/900 Cameron SS Space Saver
 3000# Working Pressure
 3000# Working Pressure Choke Manifold



District I
PO Box 1980, Hobbs, NM 88241-1980
District II
811 South First, Artesia, NM 88210
District III
1000 Rio Brazos Rd., Aztec, NM 87410
District IV
2040 South Pacheco, Santa Fe, NM 87505

State of New Mexico
Energy, Minerals & Natural Resources Department

OIL CONSERVATION DIVISION
2040 South Pacheco
Santa Fe, NM 87505

Form C-102
Revised October 18, 1994
Instructions on back
Submit to Appropriate District Office
State Lease - 4 Copies
Fee Lease - 3 Copies

☐ AMENDED REPORT

WELL LOCATION AND ACREAGE DEDICATION PLAT

1 API Number 30-025-00528		2 Pool Code 43329		3 Pool Name Maljamar Grayburg San Andres		
4 Property Code 14578		5 Property Name Caprock Maljamar Unit			6 Well Number 13	
7 OGRID No. 22922		8 Operator Name The Wiser Oil Company			9 Elevation 4110'	

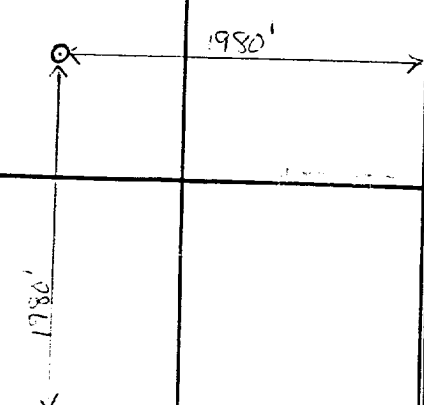
10 Surface Location

UL or lot no. J	Section 13	Township 17S	Range 32E	Lot Idn	Feet from the 1980	North/South line South	Feet from the 1980	East/West line East	County Lea
--------------------	---------------	-----------------	--------------	---------	-----------------------	---------------------------	-----------------------	------------------------	---------------

11 Bottom Hole Location If Different From Surface

UL or lot no.	Section	Township	Range	Lot Idn	Feet from the	North/South line	Feet from the	East/West line	County
12 Dedicated Acres 40					13 Joint or Infill		14 Consolidation Code		15 Order No.

NO ALLOWABLE WILL BE ASSIGNED TO THIS COMPLETION UNTIL ALL INTERESTS HAVE BEEN CONSOLIDATED
OR A NON-STANDARD UNIT HAS BEEN APPROVED BY THE DIVISION

16				17 OPERATOR CERTIFICATION I hereby certify that the information contained herein is true and complete to the best of my knowledge and belief Signature Michael R. Burch CPE Printed Name Agent for The Wiser Oil Co. Title 7-18-96 Date	
				18 SURVEYOR CERTIFICATION I hereby certify that the well location shown on this plat was plotted from field notes of actual surveys made by me or under my supervision, and that the same is true and correct to the best of my belief. Date of Survey Signature and Seal of Professional Surveyer: Certificate Number	