

UNITED STATES  
DEPARTMENT OF THE INTERIOR  
BUREAU OF LAND MANAGEMENT

FORM APPROVED  
Budget Bureau No. 1004-0135  
Expires: March 31, 1993

**SUNDRY NOTICES AND REPORTS ON WELLS**

Do not use this form for proposals to drill or to deepen or reentry to a different reservoir.  
Use "APPLICATION FOR PERMIT—" for such proposals

**SUBMIT IN TRIPLICATE**

1. Type of Well  
☒ Oil Well ☐ Gas Well ☐ Other

2. Name of Operator

Conoco Inc.

(915) 686-6540

3. Address and Telephone No.

10 Desta Drive West Midland, TX 79705

4. Location of Well (Footage, Sec., T., R., M., or Survey Description)

Unit E, 1980' FWL & 660' FWL  
Sec. 22, T-17S, R-32E

5. Lease Designation and Serial No.

2C-029509A

6. If Indian, Allottee or Tribe Name

7. If Unit or CA, Agreement Designation

8. Well Name and No.

Barish A No. 2

9. API Well No.

30-025-00623

10. Field and Pool, or Exploratory Area

Mojave (G-SA)

11. County or Parish, State

Lea County, N.Mex.

12. CHECK APPROPRIATE BOX(s) TO INDICATE NATURE OF NOTICE, REPORT, OR OTHER DATA

TYPE OF SUBMISSION

- ☒ Notice of Intent  
☐ Subsequent Report  
☐ Final Abandonment Notice

TYPE OF ACTION

- ☒ Abandonment  
☐ Recompletion  
☐ Plugging Back  
☐ Casing Repair  
☐ Altering Casing  
☐ Other

- ☐ Change of Plans  
☐ New Construction  
☐ Non-Routine Fracturing  
☐ Water Shut-Off  
☐ Conversion to Injection  
☐ Dispose Water

(Note: Report results of multiple completion on Well Completion or Recompletion Report and Log form.)

13. Describe Proposed or Completed Operations (Clearly state all pertinent details, and give pertinent dates, including estimated date of starting any proposed work. If well is directionally drilled, give subsurface locations and measured and true vertical depths for all markers and zones pertinent to this work.)\*

We propose to plug and abandon Barish A No. 2 according to the attached procedure.

RECEIVED

NOV 16 11 56 AM '90

14. I hereby certify that the foregoing is true and correct

Signed Josh Craig

Title Administrative Supervisor

Date 11-15-90

(This space for Federal or State office use)

PERMITTING DIVISION

Approved by \_\_\_\_\_  
Conditions of approval, if any:

Title \_\_\_\_\_

Date 11-21-90

Title 18 U.S.C. Section 1001, makes it a crime for any person knowingly and willfully to make to any department or agency of the United States any false, fictitious or fraudulent statements or representations as to any matter within its jurisdiction.

\*See Instruction on Reverse Side

Recommended Procedure:

1. Prepare well for P&A:

**SAFETY:** 1) A TAILGATE SAFETY MEETING SHALL BE HELD PRIOR TO COMMENCING ANY WORK.  
2) REVIEW VENDOR'S WELLSITE SAFETY PROCEDURES IN ADDITION TO CONOCO'S APPLICABLE SAFETY PROCEDURES.

- A. MIRU. Bleed well pressure down. Kill well with 9.5 ppg brine if needed.
- B. ND wellhead and NU BOP.
- C. GIH w/6-1/4" bit, 7" casing scraper, and 2-7/8" WS to 2564'. Load and circulate hole clean with 105 bbls fresh water. POOH.

2. Abandon Yates completion:

- A. MIRU cement services.

**SAFETY:** 1) ALL LINES MUST BE PROPERLY STAKED.  
2) KEEP A SAFE DISTANCE AWAY FROM ALL PRESSURIZED LINES.

- B. GIH w/7" tension packer and 2-7/8" WS. Set packer @ 2200'. Pressure up backside to 500 psi. Establish pump-in rate.
- C. Pump 25 sacks cement (5 sacks excess) and displace 60' below packer with 15 bbls fresh water. Maximum pressure is 1000 psi.
- D. Pressure up on tubing and shut-in for a minimum of 24 hrs.
- E. Release packer and POOH.
- F. MIRU reverse equipment.
- G. GIH w/6-1/4" bit, 4-3/4" drill collars, and 2-7/8" WS.
- H. Drill out cement from  $\pm$  2200'-2314'. Circulate hole clean.
- I. Pressure test casing to  $\pm$ 500 psi for 15 minutes.

3. Abandon Grayburg San Andres completion:

- A. GIH w/6-1/4" bit, 4-3/4" drill collars, and 2-7/8" WS.
- B. Drill out cement and CIBP set @ 2564'.
- C. GIH and check for fill @ 4120'.
- D. POOH laying down drill collars. Rig down reverse equipment.
- E. GIH w/6-1/4" bit, 7" casing scraper, and 2-7/8" WS to 3530'. POOH.
- F. GIH w/7" cement retainer, on-off tool, and 2-7/8" WS. Set cement retainer @ 3500'. Sting out and load hole with 140 bbls fresh water. Sting into cement retainer and establish pump-in rate.
- G. Pump 350 sacks cement (37 sacks excess) through retainer. Maximum pressure is 1000 psi.
- H. Sting out of cement retainer. Spot 25 sacks cement from 3500'-3355' and displace with 19 bbls fresh water.
- I. POOH to 3355'. Load hole with 135 bbls mud.
- J. POOH laying down WS to 2390'.

4. Spot cement plug across Yates completion:

- A. Load hole with 2 bbls mud.
- B. Spot 25 sacks of cement from 2390'-2245' and displace with 13 bbls mud.
- C. POOH laying down WS to 1025'.

5. Spot cement plug across top of salt:

- A. Load hole with 3 bbls mud.
- B. Spot 25 sacks of cement from 1025'-880' and displace with 5 bbls mud.
- C. POOH with WS. WOC. GIH and tag top of plug.
- D. POOH laying down WS.

6. Circulate cement up surface casing and set surface plug.

- A. MIRU wireline services.

**SAFETY: REVIEW AND FOLLOW NEW MIDLAND DIVISION PERFORATING GUIDELINES.**

- 1) **INSURE VENDOR HAS POSTED WARNING SIGNS AT ALL ENTRANCES TO LOCATION.**
- 2) **KEEP ALL UNNECESSARY PERSONNEL AWAY FROM PERFORATING GUNS.**
- 3) **A PACK-OFF IS REQUIRED FOR ALL LOGGING AND PERFORATING RUNS.**
- 4) **BE SURE TO TURN OFF RADIOS AND MOBILE TELEPHONES. GROUND WELLHEAD TO PERFORATING TRUCK.**

- B. RIH w/4" casing gun loaded 4 JSPF (120° phase, .4" EHD, centralized) and CCL.
- C. Perforate 7" casing @ 225'. POOH.
- D. GIH w/1 jt 2-7/8" tubing. Close BOP. Load hole and establish circulation up 13" x 7" annulus with 30 bbls mud.
- E. Pump 155 sacks cement (18 sacks excess) to fill 13" x 7" annulus and set surface plug in 7" casing.
- F. POOH with tubing.
- G. RD wireline and cement services.

7. Prepare surface location for abandonment:

- A. ND BOP and cut off all casing strings at the base of the cellar or 3' below the final restored ground level (whichever is deeper.) RDMO pulling unit.
- B. Fill the casing strings (if necessary) from the cement plug to surface with cement.
- C. Cover the wellbore with a metal plate at least 1/4" thick, welded in place, or a cement cap extending radially at least 12" beyond the 13" casing and at least 4" thick.
- D. Erect an abandonment marker according to the following specifications:
  - 1. Marker must be at least 4" diameter pipe, 10' long with 4' above restored ground level, and embedded in cement.

2. Marker must be capped and inscribed with the following well information.

Baish A No. 2  
Unit E, Sec. 22, T-17S, R-32E  
Lea County, New Mexico  
Date

Note: 1/4" metal plate can be welded to marker and then to the casing after the marker is set in cement.

- E. Cut off dead-man anchors below ground level and remove markers. Fill in cellar and workover pit.  
F. Remove all equipment, concrete bases, and pipe not in use.  
G. Clean and restore location to its natural state. Reseed according to BLM requirements.
8. Send a copy of the well service report and final P&A schematic to the Midland Office so the proper forms can be filed.

Approved:

Tom C. Cuddell  
Engineering Technician

10/30/90  
Date

Jim Alb  
Production Engineer

10/30/90  
Date

Duke P. Lindley for PBD  
Supervising Production Engineer

10.31.90  
Date

Bob Lindley  
Division Engineering Manager

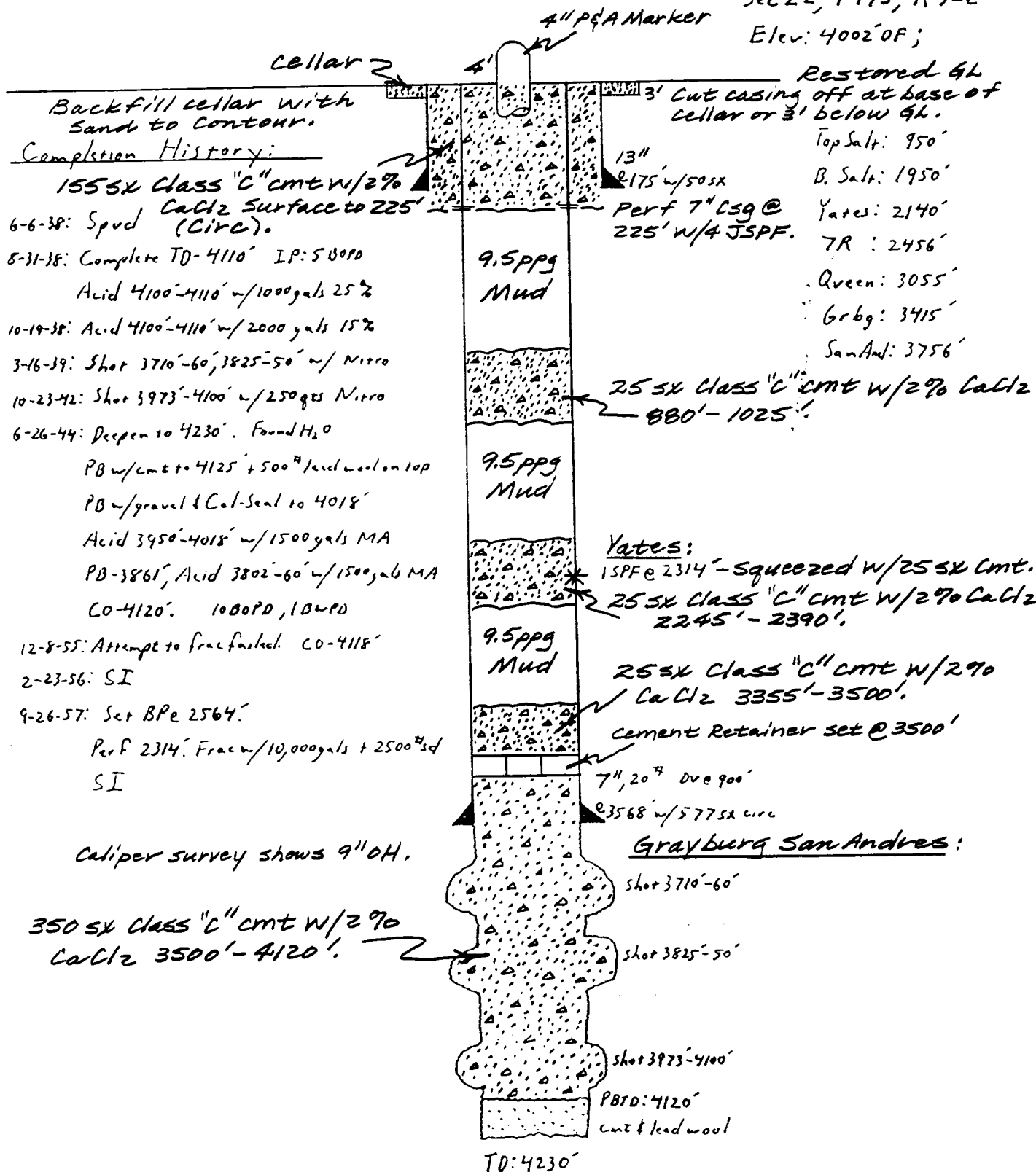
11/2/90  
Date

Frank Patton  
Production Superintendent

11/2/90  
Date

TCA\tk\BAISHA#2.PRO

1980' FNL & 660' FWL  
 Sec 22, T-17S, R-32E  
 Elev: 4002' OF;



Conoco Inc.  
 Calculation Sheet

Job No.

by TCA

Checked By

Date 10-24-90

Page 1

File

Baish A No 2

~ Proposed P&A Completion ~

Field Baish-Maljammar-Pearson

State NM