

UNITED STATES
DEPARTMENT OF THE INTERIOR
BUREAU OF LAND MANAGEMENT

N.M. Oil Cons. Division
1625 N. French Dr.
Hobbs, NM 88240

FORM APPROVED
Budget Bureau No. 1004-0135
Expires: March 31, 1993
Designation and Serial No.

SUNDRY NOTICES AND REPORTS ON WELLS

Do not use this form for proposals to drill or to deepen or reentry to a different reservoir.
Use "APPLICATION FOR PERMIT—" for such proposals

SUBMIT IN TRIPLICATE

1. Type of Well

☒ Oil Well ☐ Gas Well ☐ Other

2. Name of Operator

Conoco Inc

3. Address and Telephone No.

10 DESTA DR. STE. 100W, MIDLAND, TX 79705-4500 (915) 686-5580

4. Location of Well (Footage, Sec., T. R. M. or Survey Description)

2590' FSL & 25' FWL, Sec. 28, T17S, R32E, L

LC 057210

6. If Indian, Allottee or Tribe Name

7. If Unit or CA, Agreement Designation

8. Well Name and No.

MCA Unit #174

9. API Well No.

13794
30-025-8501+

10. Field and Pool, or Exploratory Area

Maljamar Grayburg/SA

11. County or Parish, State

Lea, NM

CHECK APPROPRIATE BOX(S) TO INDICATE NATURE OF NOTICE, REPORT, OR OTHER DATA

TYPE OF SUBMISSION

- ☒ Notice of Intent
☐ Subsequent Report
☐ Final Abandonment Notice

TYPE OF ACTION

- ☒ Abandonment
☐ Recompletion
☐ Plugging Back
☐ Casing Repair
☐ Altering Casing
☐ Other _____
- ☐ Change of Plans
☐ New Construction
☐ Non-Routine Fracturing
☐ Water Shut-Off
☐ Conversion to Injection
☐ Dispose Water

Note: Report results of multiple completion on Well Completion or Recompletion Report and Log form.)

13. Describe Proposed or Completed Operations (Clearly state all pertinent details, and give pertinent dates, including estimated date of starting any proposed work. If well is directionally drilled, give subsurface locations and measured and true vertical depths for all markers and zones pertinent to this work.)*

Conoco requests approval to plug and abandon this well, per the attached procedure.

**APPROVAL SUBJECT TO
GENERAL REQUIREMENTS AND
SPECIAL STIPULATIONS ATTACHED**

14. I hereby certify that the foregoing is true and correct

Signed Reesa Wilkes

Title Regulatory Specialist

Date 9/5/01

(This space for Federal or State office use)

Approved by (ORIG. SGD.) ALEXIS C. SWOBODA

Title

PETROLEUM ENGINEER

Date SEP 13 2001

Conditions of approval if any:

BLM(6), NMOCD(1), SHEAR, PONCA, COST ASST, FIELD, FILE ROOM

Title 18 U.S.C. Section 1001, makes it a crime for any person knowingly and willfully to make to any department or agency of the United States any false, fictitious or fraudulent statements or representations as to any matter within its jurisdiction

*See Instruction on Reverse Side

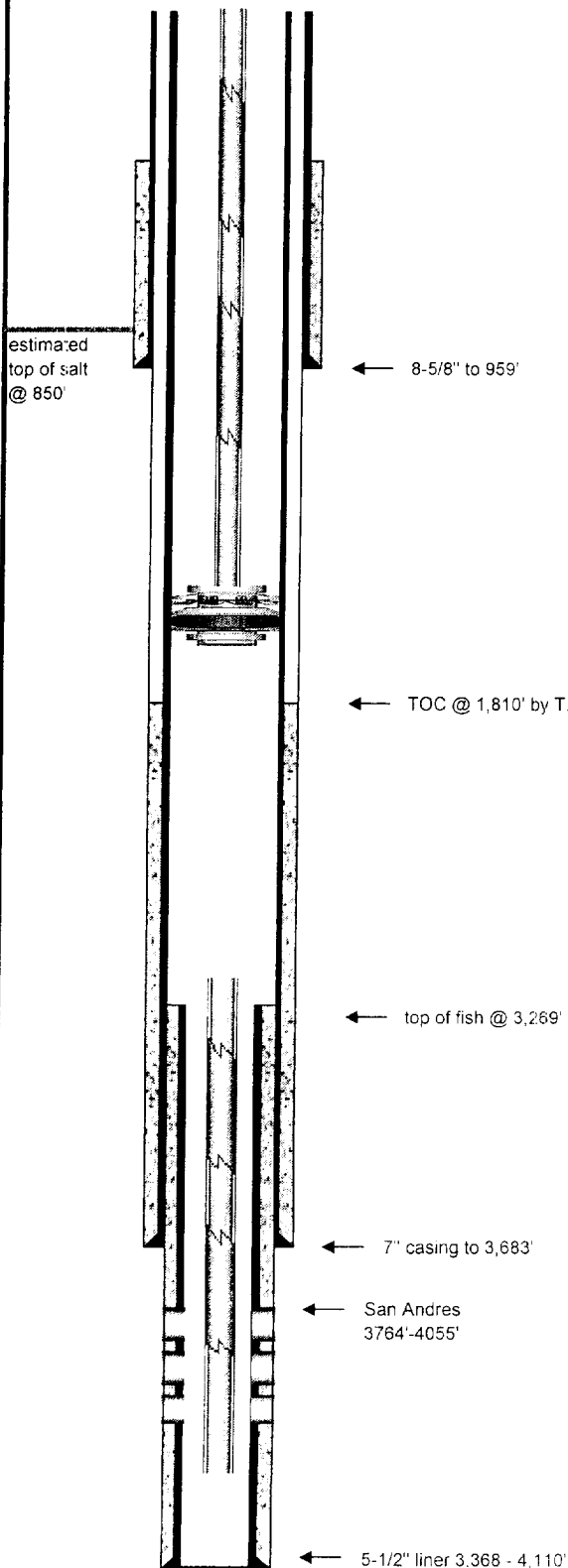
MCA Unit #174

Surface casing: 8-5/8" 28# @ 959', cmt'd w/ 50 sx
Production csg: 7" 20# J55 @ 3,683' cmt'd w/ 150 sx, TOC 1,810' by temperature survey
Production liner: 5-1/2" 15.34# csg 3,368 – 4,110' cmt'd w/ 175 sx
Perforations: 3,764 – 4,055'
Junk in hole: top of fish @ 3,269' – 25 jts 2-7/8" tbg, mud anchor

Tubing/packer: Weatherford packer w/ on/off tool & 1.781" profile nipple @ 1,300'

1. Set steel pit and flow well down.
2. MIRU plugging equipment. NU BOP & pan. POOH w/ packer.
3. RIH w/ 7" tubing-set CIBP, set CIBP @ 3,200'. Circulate hole w/ plugging mud and cap CIBP w/ 25 sx C cmt.
- * → 4. RIH w/ 7" tubing-set cement retainer and set @ 1,300'. Establish rate below retainer and squeeze 50 sx C cmt, pump 15 sx C cmt on top of retainer. (base of salt plug)
5. Perforate 7" casing @ 1,009'. RIH w/ packer and squeeze 75 sx C cmt w/ 2% CaCl₂ 900 – 1,009'. (top of salt and surface casing shoe). WOC & TAG
6. Perforate 7" & 8-5/8" casings @ 60'. NU wellhead and circulate cement to surface in/out of 8-5/8" & 7" casings.
7. Cut off wellhead and install dryhole marker. Cut off anchors and level location.

* 100' PLUG AT BASE OF SALT, 1900 – 2000' TAG-



Field Name:	Maljamar		
County:	Lea	Well Type:	Oil
State:	New Mexico	Depth:	4,110
RRC District:		Drilling Commenced:	
Section:	28	Drilling Completed:	
Block:		Date Well Plugged:	
Survey:	T-17-S; R-32-E	Longitude:	
		Latitude:	
		Freshwater Depths:	
API #:			
Lease or ID:			

Casing

Description	Size (inches)	Depth (feet)	TOC (feet)	Cement (sacks)	Hole Size (inches)
Surface:	8-5/8"	959	400	50	
Production:	7"	3,683	1,810	150	
Liner (1):	5-1/2"	4,110	3,368	175	

Existing Plugs

Description	Top (feet)	Depth (feet)	Volume (sacks)	Volume (cu ft)
1				
2				
3				
4				
5				
6				
7				
8				

Perforations

Formation	Top (feet)	Depth (feet)
San Andres	3,764	4,055

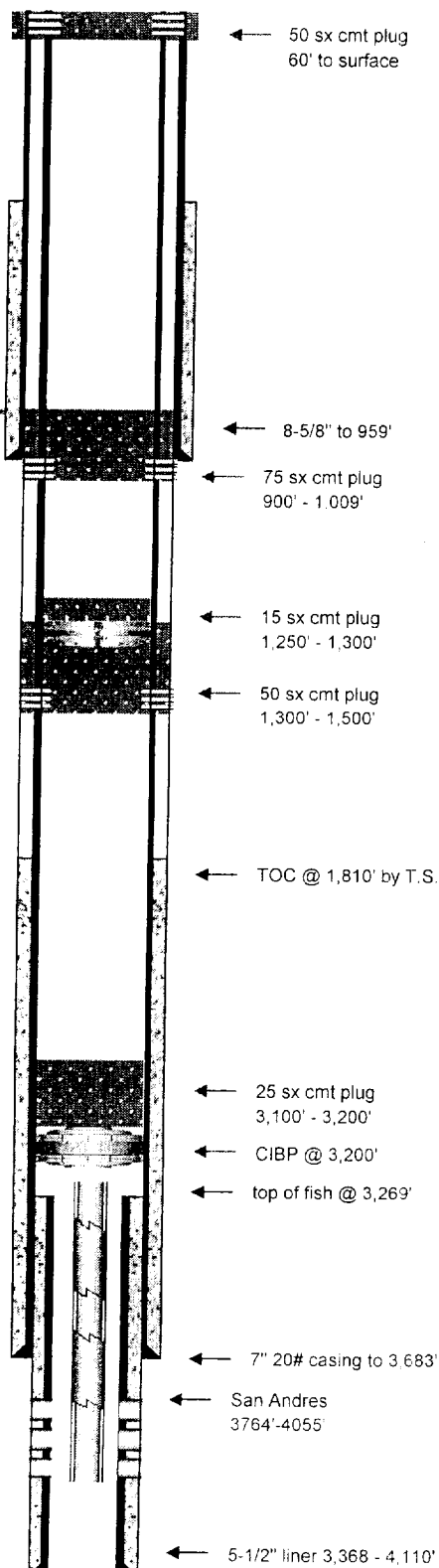
Formations

Name	Top of Formation
estimated top of salt	850

Comments

8/9/01: 2-3/8" IPC tbg & Weatherford packer w/ 1.78" profile nipple & on/off tool @ 1,300'.
Fish is 25 jts 2-7/8" tubing and mud anchor, top at 3,269'

Prepared By: Jim Newman
Date: 9/5/2001



Field Name:	Maljamar		
County:	Lea	Well Type:	Oil
State:	New Mexico	Depth:	4,110
RRC District:		Drilling Commenced:	
Section:	28	Drilling Completed:	
Block:		Date Well Plugged:	
Survey:	T-17-S; R-32-E	Longitude:	
		Latitude:	
		Freshwater Depths:	
API #:			
Lease or ID:			

Casing

Description	Size (inches)	Depth (feet)	TOC (feet)	Cement (sacks)	Hole Size (inches)
Surface:	8-5/8"	959	400	50	
Production:	7"	3,683	1,810	150	
Liner (1):	5-1/2"	4,110	3,368	175	

Proposed Plugs

Description	Top (feet)	Depth (feet)	Volume (sacks)	Volume (cu ft)
1 CIBP	3,200	3,200		
2 Cement-Class C - Balanced	3,100	3,200	25	14.8
3 Cement-Class C - Sqz/Retainer	1,300	1,500	50	14.8
4 Cement-Class C - Balanced	1,250	1,300	15	14.8
5 Cement-Class C - Sqz/Packer	900 (tag)	1,009	75	14.8
6 Cement-Class C - Sqz/Packer	surface	60	50	14.8

Perforations

Formation	Top (feet)	Depth (feet)
San Andres	3,764	4,055

Formations

Name	Top of Formation
estimated top of salt	850

Comments

Fish is 25 jts 2-7/8" tubing and mud anchor, top at 3,269'

Prepared By: Jim Newman
Date: 9/5/2001