

NEW MEXICO OIL CONSERVATION COMMISSION
 WELL LOCATION AND ACREAGE DEDICATION PLAT
 U.C.C.

Form C-102
 Supersedes C-120
 Effective 1-1-65

All distances must be from the water line of the Section.

June 13 9 15 AM '67

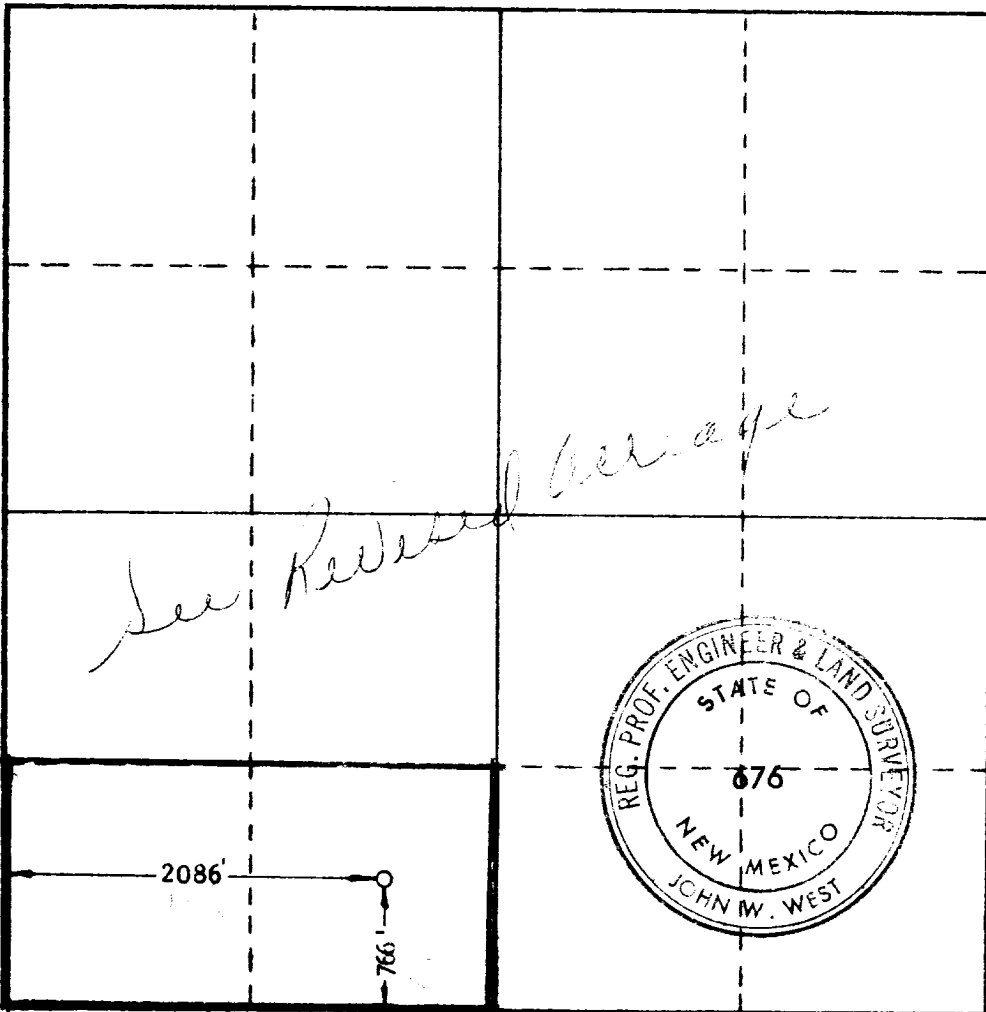
Operator UNION OIL COMPANY OF CALIFORNIA		Lease REED		Well No. 1
Unit Letter N	Section 12	Township 15 SOUTH	Range 34 EAST	County LEA
Actual Footage Location of Well: 766 feet from the SOUTH line and 2086 feet from the WEST line				
Ground Level Elev. 4059.8	Producing Formation Wolfcamp	Pool Morton Wolfcamp	Dedicated Acreage: 80 Acres	

1. Outline the acreage dedicated to the subject well by colored pencil or hachure marks on the plat below.
2. If more than one lease is dedicated to the well, outline each and identify the ownership thereof (both as to working interest and royalty).
3. If more than one lease of different ownership is dedicated to the well, have the interests of all owners been consolidated by communitization, unitization, force-pooling, etc?

Yes No If answer is "yes," type of consolidation _____

If answer is "no," list the owners and tract descriptions which have actually been consolidated. (Use reverse side of this form if necessary.) _____

No allowable will be assigned to the well until all interests have been consolidated (by communitization, unitization, forced-pooling, or otherwise) or until a non-standard unit, eliminating such interests, has been approved by the Commission.



CERTIFICATION

I hereby certify that the information contained herein is true and complete to the best of my knowledge and belief.

R. G. Ladd, Jr.
 Name

R. G. Ladd, Jr.
 Position
 District Drilling Superintendent
 Company
 Union Oil Company of California

Date
 June 16, 1967

I hereby certify that the well location shown on this plat was plotted from field notes of actual surveys made by me or under my supervision, and that the same is true and correct to the best of my knowledge and belief.

Date Surveyed
 6/15/67

Registered Professional Engineer and/or Land Surveyor

John W. West

Certificate No. **676**

