

NEW MEXICO OIL CONSERVATION COMMISSION
WELL LOCATION AND ACREAGE DEDICATION PLAT

FEB 26 1970

Form C-102
Supersedes C-128
Effective 1-1-65

All distances must be from the outer boundaries of the Section.

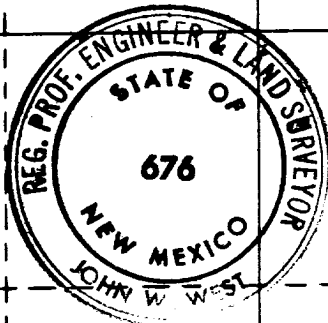
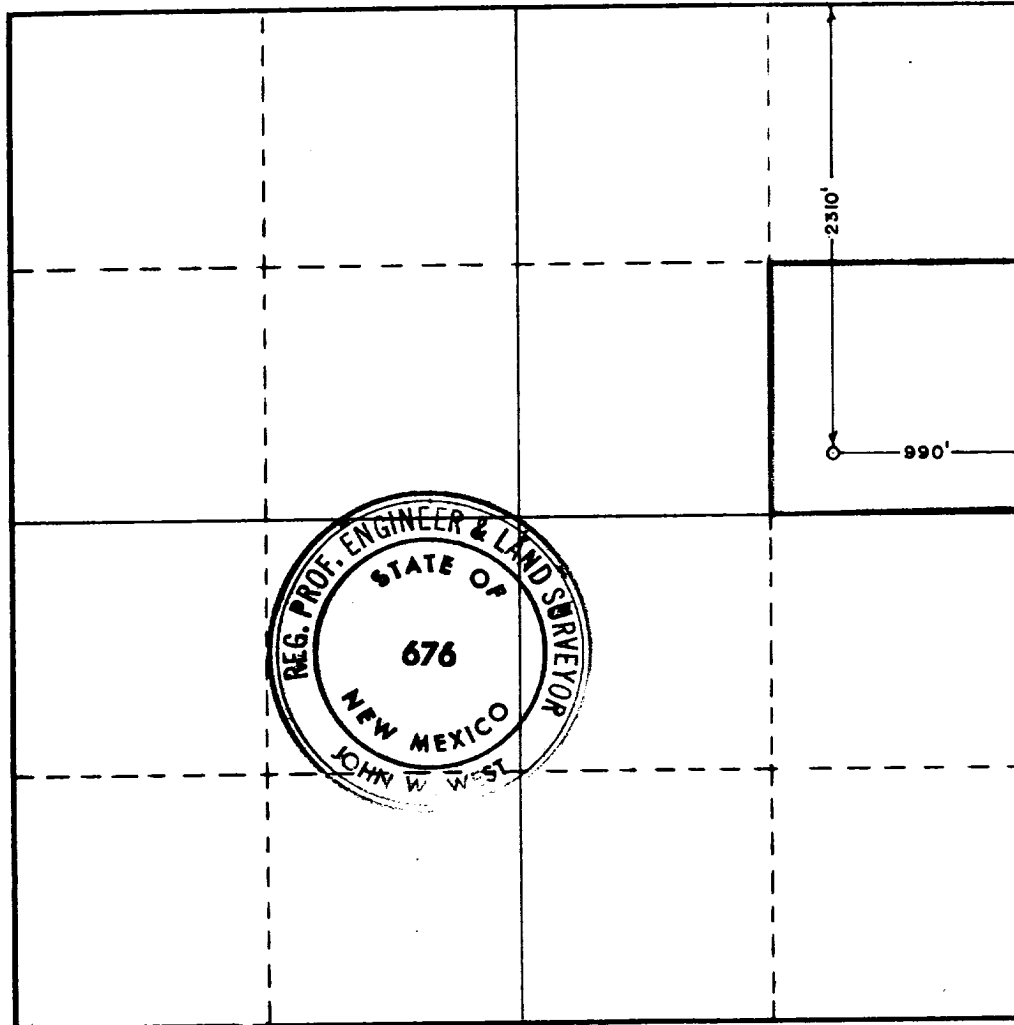
Operator TAMARACK PETROLEUM CO., INC.			Lease SHELL "A" State		Well No. 1
Unit Letter H	Section 9	Township 17 SOUTH	Range 33 EAST	County LEA	
Actual Footage Location of Well: 2310 feet from the NORTH line and 990 feet from the EAST line					
Ground Level Elev. 4182	Producing Formation Grayburg		Pool Maljamar		Dedicated Acreage: 40 Acres

1. Outline the acreage dedicated to the subject well by colored pencil or hachure marks on the plat below.
2. If more than one lease is dedicated to the well, outline each and identify the ownership thereof (both as to working interest and royalty).
3. If more than one lease of different ownership is dedicated to the well, have the interests of all owners been consolidated by communitization, unitization, force-pooling, etc?

☐ Yes ☐ No If answer is "yes," type of consolidation one lease only

If answer is "no," list the owners and tract descriptions which have actually been consolidated. (Use reverse side of this form if necessary.)

No allowable will be assigned to the well until all interests have been consolidated (by communitization, unitization, forced-pooling, or otherwise) or until a non-standard unit, eliminating such interests, has been approved by the Commission.



CERTIFICATION

I hereby certify that the information contained herein is true and complete to the best of my knowledge and belief.

Name John W. West
Position Vice President
Company Tamarack Petroleum Co., Inc.

Date February 25, 1970

I hereby certify that the well location shown on this plat was plotted from field notes of actual surveys made by me or under my supervision, and that the same is true and correct to the best of my knowledge and belief.

Date Surveyed FEBRUARY 23, 1970

Registered Professional Engineer and/or Land Surveyor

John W. West
Certificate No. 676

0 230 460 690 920 1150 1380 1610 1840 2070 2300 2530 2760 3000