

MEXICO OIL CONSERVATION COMMISS' WELL LOCATION AND ACREAGE DEDICATION PLAT

Form C-102 Supersedes C-128 Effective 1-1-65

All distances must be from the outer boundaries of the Section.

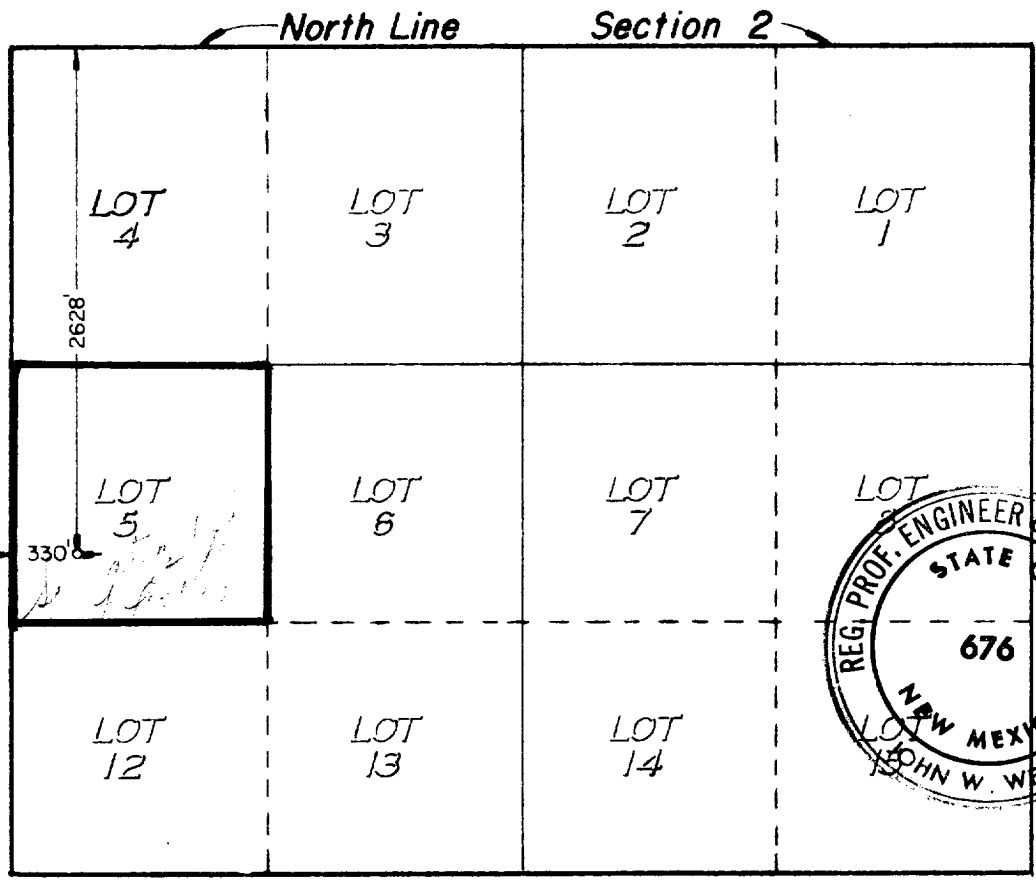
Operator Sol West III		Lease Tommy Gallagher			Well No. 1
Tract Letter E	Section 2	Township 16 South	Range 35 East	County Lea	
Actual Footage Location of Well: 2628 feet from the North line and 330 feet from the West line					
Ground Level Elev. 3998.8	Producing Formation WOLFCAMP	Pool TOWNSEND	Dedicated Acreage: 40 Acres		

- Outline the acreage dedicated to the subject well by colored pencil or hatchure marks on the plat below.
- If more than one lease is dedicated to the well, outline each and identify the ownership thereof (both as to working interest and royalty).
- If more than one lease of different ownership is dedicated to the well, have the interests of all owners been consolidated by communitization, unitization, force-pooling, etc?

Yes No If answer is "yes," type of consolidation _____

If answer is "no," list the owners and tract descriptions which have actually been consolidated. (Use reverse side of this form if necessary.) _____

No allowable will be assigned to the well until all interests have been consolidated (by communitization, unitization, forced-pooling, or otherwise) or until a non-standard unit, eliminating such interests, has been approved by the Commission.



CERTIFICATION

I hereby certify that the information contained herein is true and complete to the best of my knowledge and belief.

R. L. Tarpley

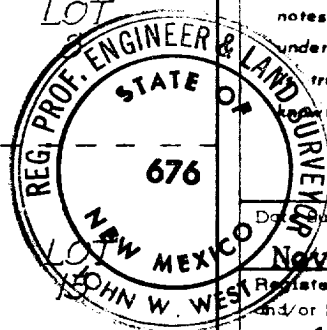
Name
R. L. TARPLEY

Position
CONSULTANT

Company
SOL WEST III

Date
DECEMBER 15, 1980

I hereby certify that the well location shown on this plat was plotted from field notes of actual surveys made by me or under my supervision, and that the same is true and correct to the best of my knowledge and belief.



Date Surveyed
November 18, 1980

Registered Professional Engineer and/or Land Surveyor

John W. West

Certificate No **JOHN W. WEST 676**

PATRICK A. ROMERO 6663

Ronald J. Eideen 3239

