

ILLECIBLE

MEXICO OIL CONSERVATION COMMISSION WELL LOCATION AND ACREAGE DEDICATION PLAT

Form C-102
Supersedes C-128
Effective 1-1-85

All distances must be from the outer boundaries of the Section

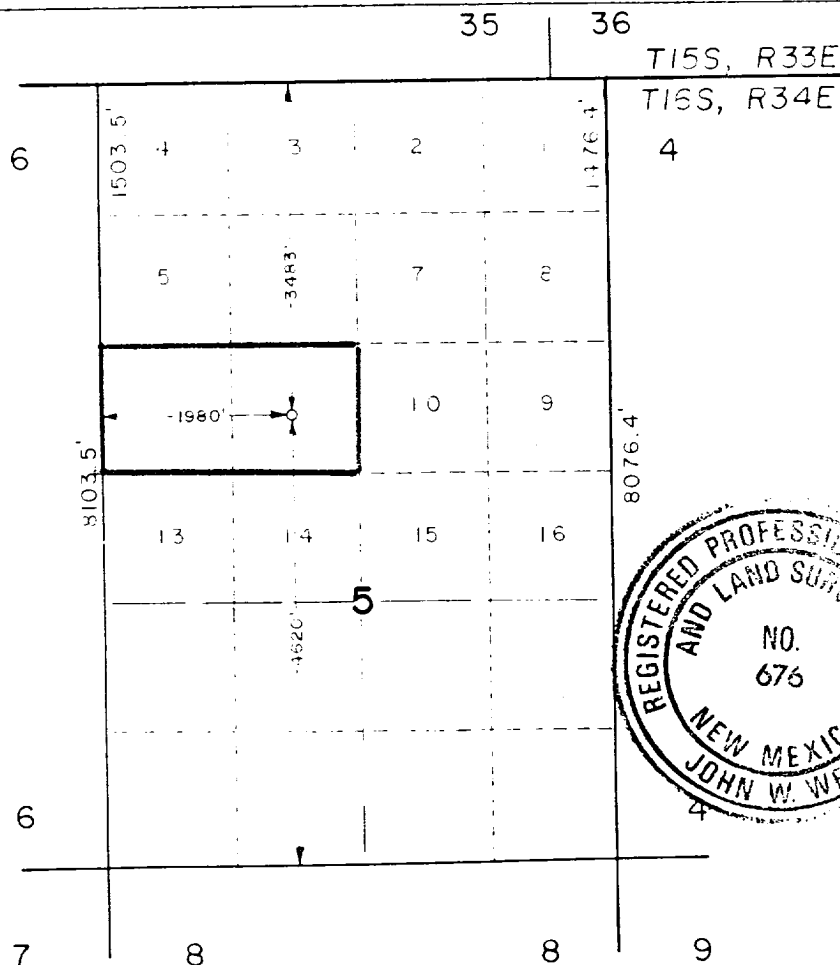
Operator Santa Fe Energy Co.			Lease N. H. 5A State		Well No. 1
Section Letter C	Section 1	Township 16 South	Range 31 East	County Leon	
Approximate Location of Well:					
feet from the South line and		1980	feet from the West line		
Ground Level Elev. 4111.3	Producing Formation Wolfcamp		Pool North Hume - Wolfcamp		Dedicated Acreage: 80 Acres

1. Outline the acreage dedicated to the subject well by colored pencil or hatchure marks on the plat below.
2. If more than one lease is dedicated to the well, outline each and identify the ownership thereof (both as to working interest and royalty).
3. If more than one lease of different ownership is dedicated to the well, have the interests of all owners been consolidated by communitization, unitization, force-pooling, etc?

☐ Yes ☒ No If answer is "yes," type of consolidation _____

If answer is "no," list the owners and tract descriptions which have actually been consolidated. (Use reverse side of this form if necessary.) See Reverse Side

No allowable will be assigned to the well until all interests have been consolidated (by communitization, unitization, forced-pooling, or otherwise) or until a non-standard unit, eliminating such interests, has been approved by the Commission.



SCALE : 1" = 2000'

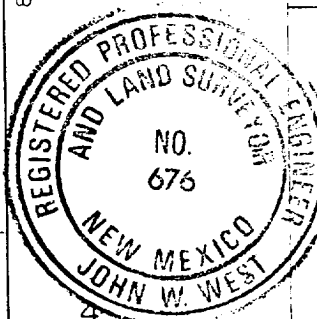
CERTIFICATION

I hereby certify that the information contained herein is true and complete to the best of my knowledge and belief.

David Slater

Name
David Slater
Position
Drilling Superintendent
Company
Santa Fe Energy
Operating Partners, L.P.
Date
4-27-88

I hereby certify that the well location shown on this plat was plotted from field notes of actual surveys made by me or under my supervision, and that the same is true and correct to the best of my knowledge and belief.



Date Surveyed
April 19, 1988
Registered Professional Engineer
and/or Land Surveyor

John W. West
Certificate No. JOHN W. WEST 676
Ronald J. Eidson 3239

STATE OF NEW MEXICO LEASE NO. LG-5661

Santa Fe Energy Operating Partners, L.P., et al - 100% WI
State of New Mexico - 12.5% Royalty

RECEIVED
MAY 3 1991
TOLSON'S OFFICE