

District I
PO Box 1980, Hobbs, NM 88241-1980

District II
611 South First, Artesia, NM 88210

District III
1000 Rio Brazos Rd., Aztec, NM 87410

District IV
2040 South Pacheco, Santa Fe, NM 87505

State of New Mexico
Energy, Minerals & Natural Resources Department

OIL CONSERVATION DIVISION
2040 South Pacheco
Santa Fe, NM 87505

Form C-101

Revised October 18, 1994

Instructions on back

Submit to Appropriate District Office

State Lease - 6 Copies

Fee Lease - 5 Copies

AMENDED REPORT

APPLICATION FOR PERMIT TO DRILL, RE-ENTER, DEEPEN, PLUGBACK, OR ADD A ZONE

Operator Name and Address Matador Operating Company 8340 Meadow Rd., Suite 158 Dallas, TX 75231		OGRID Number 014245
		API Number 30 - 0 - 25 - 34766
Property Code 25066	Property Name Bell "15" State	Well No. 2

Surface Location

UL or lot no.	Section	Township	Range	Lot Idn	Feet from the	North/South line	Feet from the	East/West Line	County
A	15	16S	33E		1310	NORTH	1310	EAST	LEA

Proposed Bottom Hole Location If Different From Surface

UL or lot no.	Section	Township	Range	Lot Idn	Feet from the	North/South line	Feet from the	East/West Line	County
Proposed Pool 1 Sombreno Wildcat; Mississippian					Proposed Pool 2				

Work Type Code N	Well Type Code G	Cable/Rotary R	Lease Type Code S	Ground Level Elevation 4202
Multiple No	Proposed Depth 13500	Formation Mississippian	Contractor To Be Determined	Spud Date 01-01-00

Proposed Casing and Cement Program

Hole Size	Casing Size	Casing weight/foot	Setting Depth	Sacks of Cement	Estimated TOC
17 1/2"	13 3/8"	48	400'	315	Surface
11"	8 5/8"	32	4400'	1500	Surface
7 7/8"	5 1/2"	17	13500'	500	11500'

²² Describe the proposed program. If this application is to DEEPEN or PLUG BACK give the data on the present productive zone and proposed new productive zone. Describe the blowout prevention program, if any. Use additional sheets if necessary.

Drill 17 1/2" hole to 400': Run 13 3/8" casing and cement to surface. Nipple up 11" 5M BOP assembly and test to 2000 PSI.
Drill 11" hole to 4,400': Run 8 5/8 casing and cement to surface. Nipple up 11" 5M BOP assembly and test to 5000 PSI.
Drill 7 7/8" hole to 13,500': Evaluate with electric logs.

Permit Expires 1 Year From Approval
Date Unless Drilling Underway

²³ I hereby certify that the information given above is true and complete to the best of my knowledge and belief.

Signature:

Printed name: Diane Kuykendall

Title: Production Analyst

OIL CONSERVATION DIVISION

Approved By: ORIGINAL SIGNED BY CHRIS WILLIAMS
DISTRICT I SUPERVISOR

Title:

Approval Date: NOV 19 1998

Expiration Date:

400

DISTRICT I
 P. O. Box 1980
 Hobbs, NM 88241-1980

State of New Mexico
 Energy, Minerals, and Natural Resources Department

Form C-102
 Revised 02-10-94
 Instructions on back

DISTRICT II
 P. O. Drawer DD
 Artesia, NM 88211-0719

OIL CONSERVATION DIVISION
 P. O. Box 2088
 Santa Fe, New Mexico 87504-2088

Submit to the Appropriate
 District Office
 State Lease - 4 copies
 Fee Lease - 3 copies

DISTRICT III
 1000 Rio Brazos Rd.
 Aztec, NM 87410

AMENDED REPORT

DISTRICT IV
 P. O. Box 2088
 Santa Fe, NM 87507-2088

WELL LOCATION AND ACREAGE DEDICATION PLAT

1 API Number 30-025-34766		2 Pool Code 85620		3 Pool Name Sombbrero Wildcat, Mississippian	
4 Property Code 25066		5 Property Name BELL STATE 15			6 Well Number 2
7 OGRID No. 014245		8 Operator Name MATADOR OPERATING COMPANY			9 Elevation 4202'

10 SURFACE LOCATION

UL or lot no.	Section	Township	Range	Lot Ida	Feet from the	North/South line	Feet from the	East/West line	County
A	15	16 SOUTH	33 EAST, N.M.P.M.		1310'	NORTH	1310'	EAST	LEA

" BOTTOM HOLE LOCATION IF DIFFERENT FROM SURFACE

UL or lot no.	Section	Township	Range	Lot Ida	Feet from the	North/South line	Feet from the	East/West line	County

12 Dedicated Acres 320	13 Joint or Infill	14 Consolidation Code	15 Order No.
---------------------------	--------------------	-----------------------	--------------

NO ALLOWABLE WELL BE ASSIGNED TO THIS COMPLETION UNTIL ALL INTERESTS HAVE BEEN CONSOLIDATED OR A NON-STANDARD UNIT HAS BEEN APPROVED BY THE DIVISION

	OPERATOR CERTIFICATION I hereby certify that the information contained herein is true and complete to the best of my knowledge and belief.
	Signature <i>Diane Kuykendall</i>
	Printed Name Diane Kuykendall
	Title Production Analyst
	Date 11-8-99
	SURVEYOR CERTIFICATION I hereby certify that the well location shown on this plat was plotted from field notes of actual surveys made by me or under my supervision, and that the same is true and correct to the best of my belief.
	Date of Survey NOVEMBER 4, 1999
	Signature and Seal of Professional Surveyor <i>V. L. Bezner</i>
	Certificate No. V. L. BEZNER R.P.S. #7920
	JOB #86115/ 97 NW / M.MZ

New Mexico Oil Conservation Division
C-102 Instructions

IF THIS IS AN AMENDED REPORT, CHECK THE BOX LABELED
"AMENDED REPORT" AT THE TOP OF THIS DOCUMENT.

Surveyors shall use the latest United States government survey or dependent resurvey. Well locations will be in reference to the New Mexico Principal Meridian. If the land is not surveyed contact the appropriate OCD district office. Independent subdivision surveys will not be acceptable.

1. The OCD assigned API number for this well
2. The pool code for this (proposed) completion
3. The pool name for this (proposed) completion
4. The property code for this (proposed) completion
5. The property name (well name) for this (proposed) completion
6. The well number for this (proposed) completion
7. Operator's OGRID number
8. The operator's name
9. The ground level elevation of this well
10. The surveyed surface location of this well measured from the section lines NOTE: If the United States government survey designates a Lot Number for this location use that number in the "UL or lot no." box. Otherwise use the OCD unit letter.
11. Proposed bottom hole location. If this is a horizontal hole indicate the location of the end of the hole.
12. The calculated acreage dedicated to this completion to nearest hundredth of an acre
13. Put a Y if more than one completion will be sharing this same acreage or N if this is the only completion on this acreage
14. If more than one lease of different ownership has been dedicated to the well show the consolidation code from the following table:
C Communitization
U Unitization
F Forced pooling
O Other
P Consolidation pending

NO ALLOWABLE WILL BE ASSIGNED TO THIS COMPLETION UNTIL ALL INTERESTS HAVE BEEN CONSOLIDATED OR A NON-STANDARD UNIT HAS BEEN APPROVED BY THE DIVISION!

15. Write in the OCD order(s) approving a non-standard location, non-standard spacing, or directional or horizontal drilling

16. This grid represents a standard section. You may superimpose a non-standard section over this grid. Outline the dedicated acreage and the separate leases within that dedicated acreage. Show the well surface location and bottom hole location, if it is directionally drilled, with the dimensions from the section lines in the cardinal directions. (Note: A legal location is determined from the perpendicular distance to the edge of the tract.) If this is a high angle or horizontal hole show that portion of the well bore that is open within this pool.

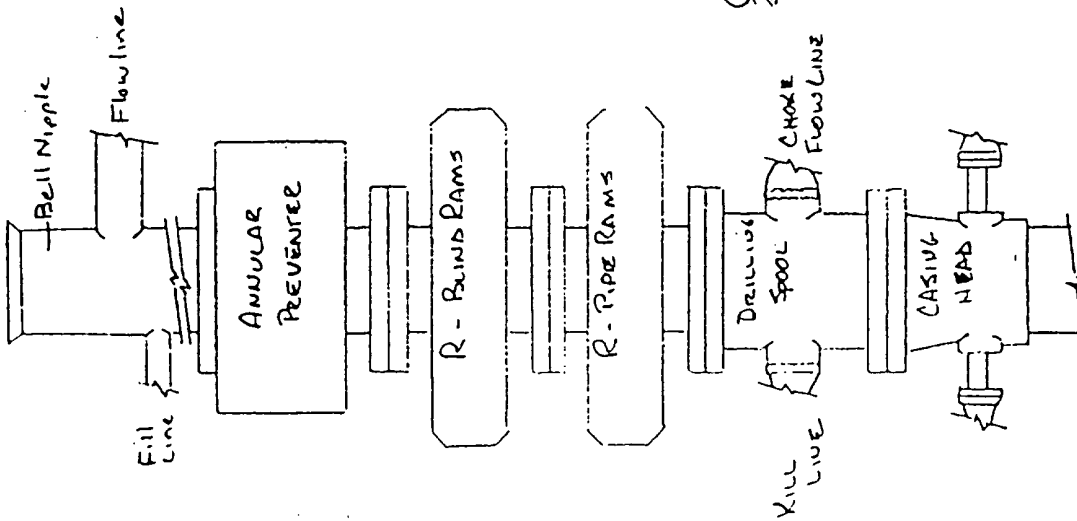
Show all lots, lot numbers, and their respective acreage.

If more than one lease has been dedicated to this completion, outline each one and identify the ownership as to both working interest and royalty.

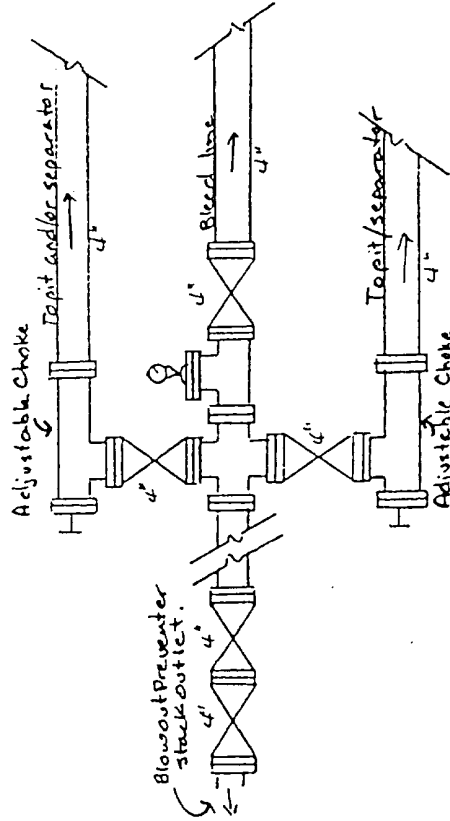
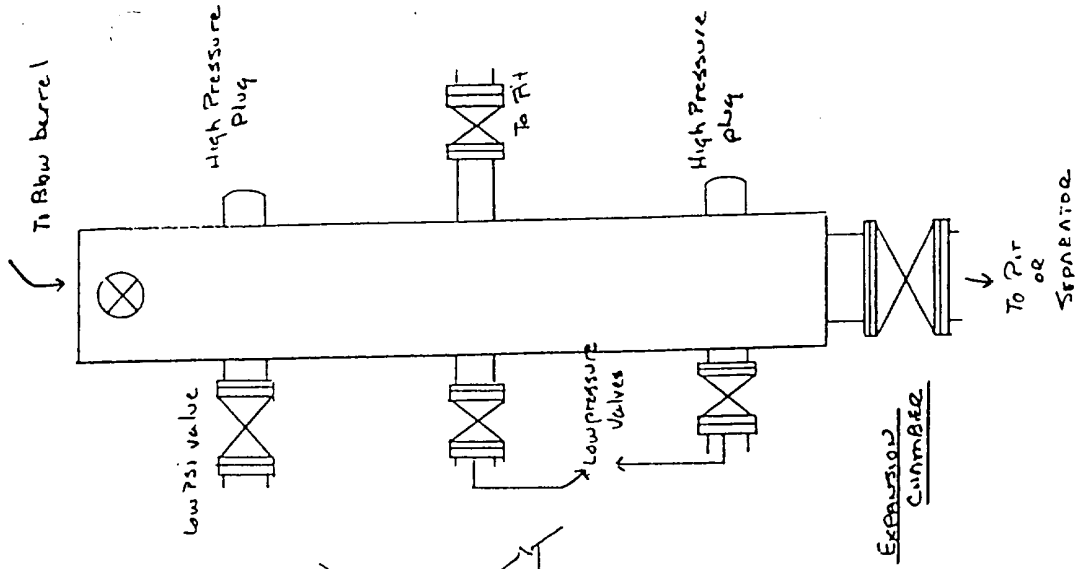
17. The signature, printed name, and title of the person authorized to make this report, and the date this document was signed.
18. The Registered surveyors certification. This section does not have to be completed if this form has been previously accepted by the OCD and is being filed for a change of pool or dedicated acreage.

Matador Operating Co
 Bell 15 South #2
 1310' FNL, 1310' FEL
 Sec 15, T16S, R33E
 Lea County, New Mexico

BOP Equipment

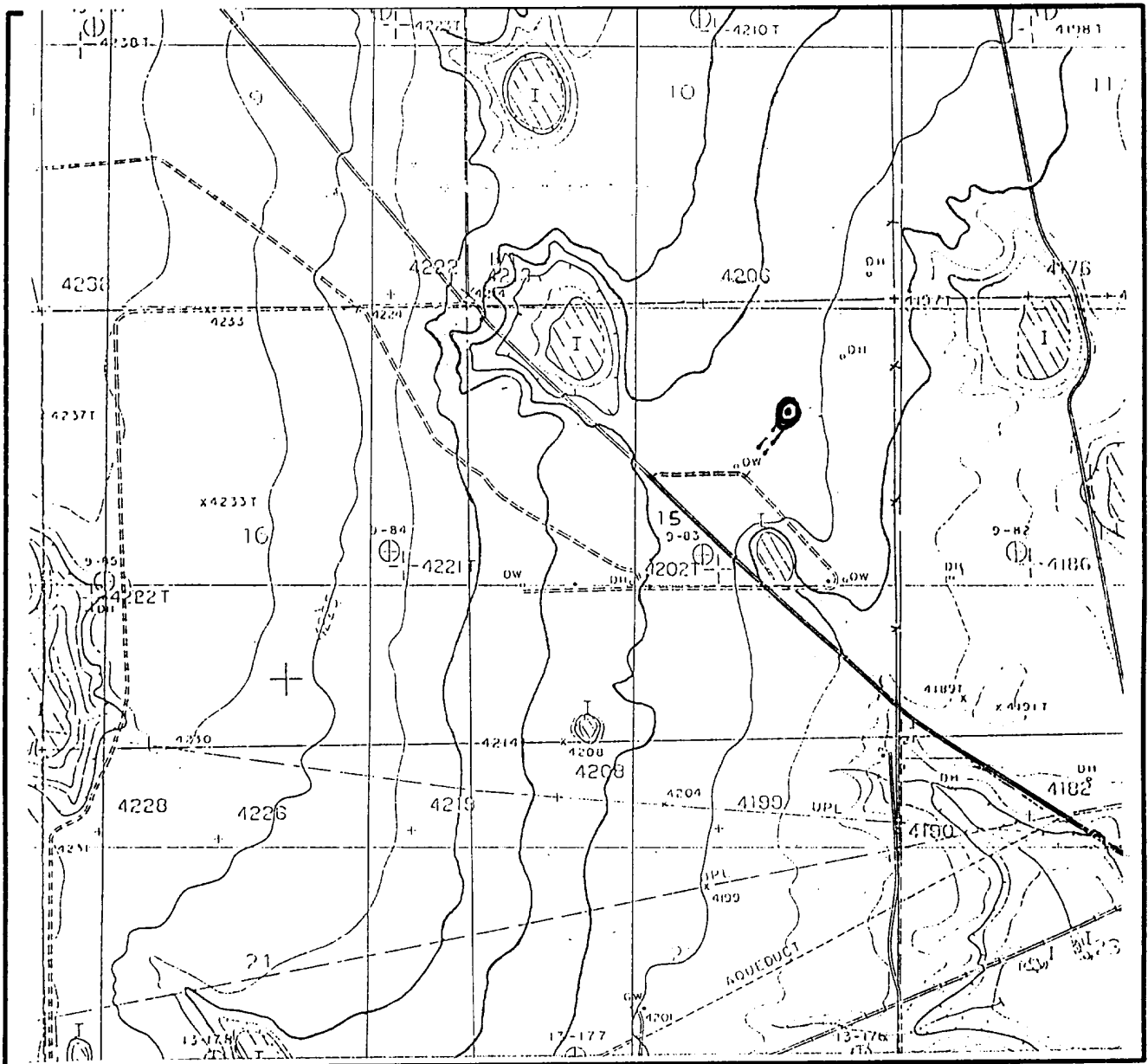


5000 psi
 Working Pressure



4" x 5000 psi CHOKES MANIFOLD

LOCATION & ELEVATION VERIFICATION MAP



SCALE : 1" = 2000'

CONTOUR INTERVAL 5'

SECTION 15 TWP 16-S RGE 33-E

SURVEY NEW MEXICO PRINCIPAL MERIDIAN

COUNTY LEA STATE NM

DESCRIPTION 1310' FNL & 1310' FEL

ELEVATION 4202'

OPERATOR MATADOR OPERATING COMPANY

LEASE BELL STATE 15 #2

U.S.G.S. TOPOGRAPHIC MAP
BUCKEYE NW, NEW MEXICO

LAT. N 32°55'31"

LONG. W 103°38'47"



This location has been very carefully staked on the ground according to the best official survey records, maps, and other data available to us.
Review this plat and notify us immediately of any possible discrepancy.

TOPOGRAPHIC LAND SURVEYORS

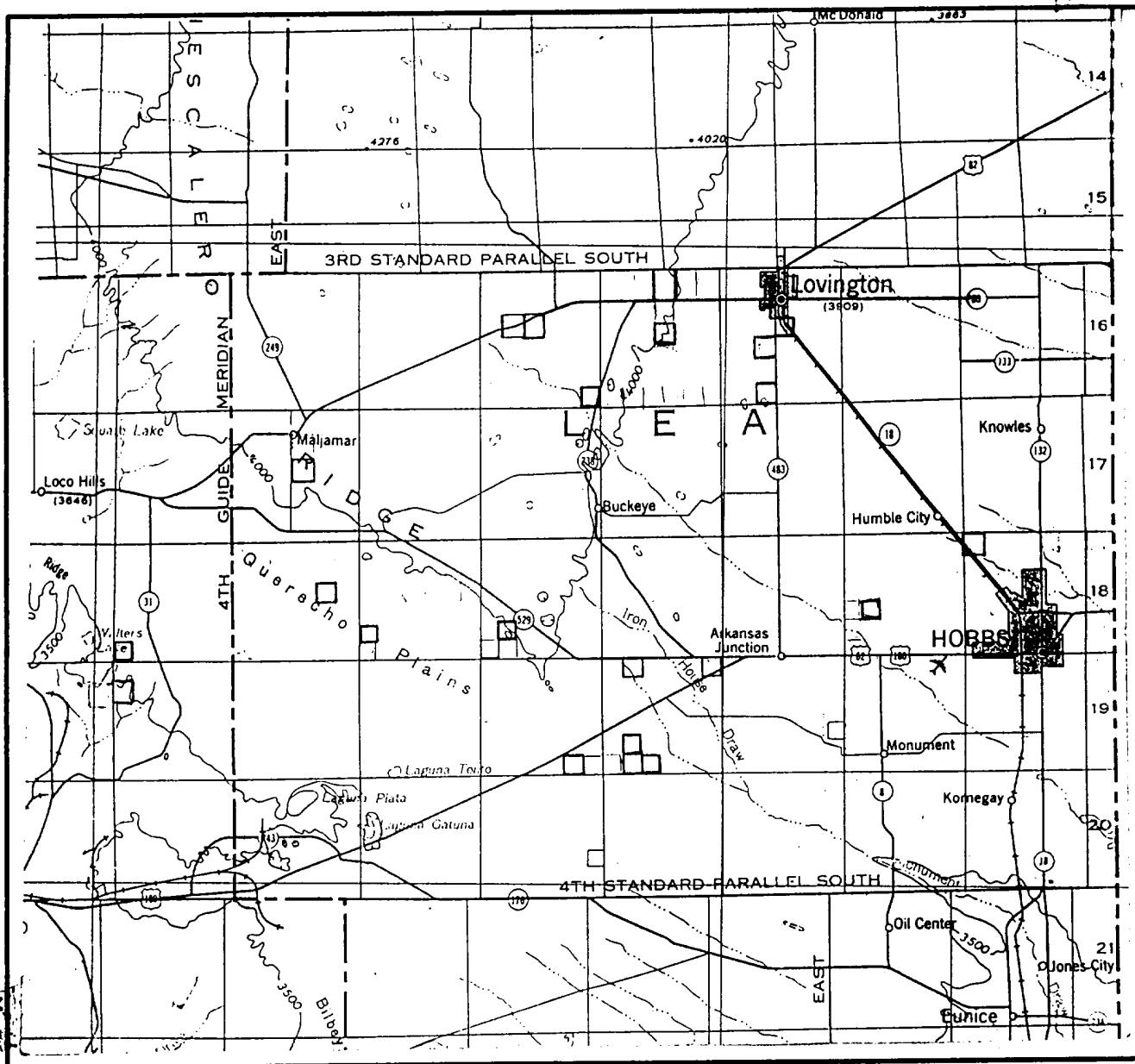
Surveying & Mapping for the Oil & Gas Industry

1307 N. HOBART
PAMPA, TX. 79065
(800) 658-6382

6709 N. CLASSEN BLVD.
OKLAHOMA CITY, OK. 73116
(800) 654-3219

2903 N. BIG SPRING
MIDLAND, TX. 79705
(800) 767-1653

VICINITY MAP



SECTION 15 TWP 16-S RGE 33-E

SURVEY NEW MEXICO PRINCIPAL MERIDIAN

COUNTY LEA STATE NM

DESCRIPTION 1310' FNL & 1310' FEL

OPERATOR MATADOR OPERATING COMPANY

LEASE BELL STATE 15 #2

DISTANCE & DIRECTION _____

FROM LOVINGTON GO WEST 13.4 MILES ON U.S. 82,

THENCE NORTHWEST 1.5 MILES ON LEASE ROAD, THENCE

EAST 0.2 MILES ON LEASE ROAD TO A POINT ±900'

SOUTHWEST OF LOCATION.



This location has been very carefully staked on the ground according to the best official survey records, maps, and other data available to us.
Review this plat and notify us immediately of any possible discrepancy.

TOPOGRAPHIC LAND SURVEYORS

Surveying & Mapping for the Oil & Gas Industry

1307 N. HOBART
PAMPA, TX. 79065
(800) 658-6382

6709 N. CLASSEN BLVD.
OKLAHOMA CITY, OK. 73116
(800) 654-3219

2903 N. BIG SPRING
MIDLAND, TX. 79705
(800) 767-1653