

PRINTED IN U.S.A.

DAY

NIGHT

3

5

4

3

2

1

12

1

10

9

8

7

6

5

4

3

2

1

12

11  
12:00am

10

REVERSE METER  
10-11-89

TEJAS  
INSTRUMENT ENGINEERS

METER NUMBER

TIME PUT ON  
8:45 A

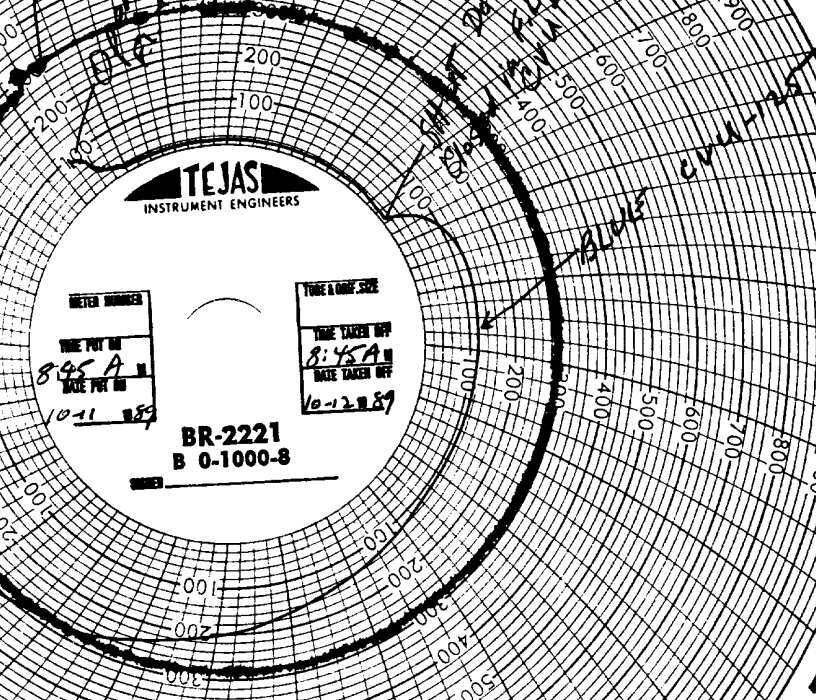
DATE PUT ON  
10-11-89

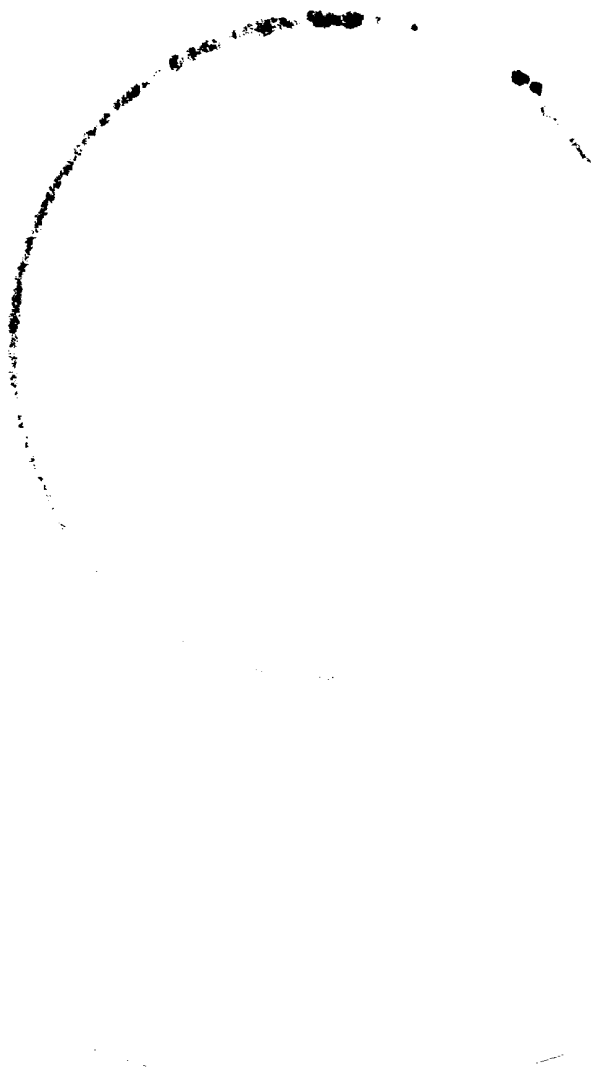
TYPE & AMP. SIZE

TIME TAKEN OFF  
8:45 A

DATE TAKEN OFF  
10-12-89

BR-2221  
B 0-1000-8





001  
1911

This form is not to be used for reporting packer leakage tests in Northwest New Mexico

NEW MEXICO OIL CONSERVATION COMMISSION

SOUTHEAST NEW MEXICO PACKER LEAKAGE TEST

Operator Texaco Producing Inc.			CENTRAL VACUUM UNIT NEW MEXICO "R" (NCT-4)			Well No. 125 2
Location of Well	Unit D	Sec 7	Twp 18	Rge 35	County LEA	
Name of Reservoir or Pool		Type of Fluid (Oil or Gas)	Method of Prod (Flow Art Lift)		Prod. Medium (Tbg or Csg)	Choke Size
Upper Compl	VACUUM GRAYBURG SAN ANDRES		OIL	ROD PUMP		CSG
Lower Compl	VACUUM ABO REEF		OIL	ROD PUMP		CSG

FLOW TEST NO. 1

Both zones shut-in at (hour, date): 9:00 9-27-88

Well opened at (hour, date):	9:00 9-28-88	Upper Completion	Lower Completion
Indicate by ( X ) the zone producing.....			X
Pressure at beginning of test.....		70	70
Stabilized? (Yes or No).....		Y	Y
Maximum pressure during test .....		70	70
Minimum pressure during test.....		70	25
Pressure at conclusion of test.....		70	25
Pressure change during test (Maximum minus Minimum).....		0	45
Was pressure change an increase or a decrease?.....			DECREASE
Well closed at (hour, date):	3:00 9-28-88	Total Time On Production	6 hrs.
Oil Production		Gas Production	
During Test: 4.25 bbls; Grav. 38.6		During Test: 2	MCF; GOR 471

Remarks \_\_\_\_\_

FLOW TEST NO. 2

Well opened at (hour, date):	9:00 9-29-88	Upper Completion	Lower Completion
Indicate by ( X ) the zone producing.....		X	
Pressure at beginning of test.....		100	570
Stabilized? (Yes or No).....		Y	Y
Maximum pressure during test.....		100	570
Minimum pressure during test.....		20	560
Pressure at conclusion of test.....		20	560
Pressure change during test (Maximum minus Minimum).....		80	10
Was pressure change an increase or a decrease?.....		DECREASE	DECREASE
Well closed at (hour, date):	3:00 9-29-88	Total time on Production	6 hrs.
Oil Production		Gas Production	
During Test: .5 bbls; Grav. 38.2		During Test: .5	MCF; GOR 1000

Remarks \_\_\_\_\_

I hereby certify that the information herein contained is true and complete to the best of my knowledge.

Approved \_\_\_\_\_ 19  
New Mexico Oil Conservation Commission

By \_\_\_\_\_  
Title \_\_\_\_\_  
Geologist

Operator \_\_\_\_\_  
By \_\_\_\_\_  
Title \_\_\_\_\_  
P.O. BOX 728 HOBBS, NM  
TEXACO INC

Date \_\_\_\_\_ SEP 30 1988