

COUNTY LEA FIELD Hobbs STATENM 30-025-23130
 OPR SHELL OIL CO. MAP

7 Shell "A" State CO-ORD
 Sec 32, T-18-S, R-38-E
 1930' FNL, 660' FEL of Sec.

Spd 6-14-69
 Cmp 7-16-69

CSG & SX - TUBING	CLASS		EL	
	FORMATION	DATUM	FORMATION	DATUM
13 3/8" at 350' w/350 sx				
8 5/8" at 3790' w/1300 sx				
5 1/2" lnr 3580-7015' w/650 sx				

LOGS EL GR RA IND HC A
 TD 7020'; PBD 6981'
 IP (Drinkard) Perfs 6930-32' F 140 BOPD + 22 BW. Pot based on
 24 hr test thru 2" chk, GOR 1500, Grav 38.4

Distribution limited and publication prohibited by subscribers' agreement.
 Reproduction rights reserved by Williams & Lee Scouting Service, Inc.

CONT Moran PROP DEPTH 6150' TYPE
 DATE

F R. 5-6-69
 PD 6150' (Blaineby)
 Contractor - Moran
 6-16-69 Drlg. 554' RB
 6-23-69 ID 4037'; Cond hole
 6-27-69 Drlg 4992' lm
 7-7-69 ID 6704'; Prep DST
 DST 6185-6226', open 2 hrs 20 min, GTS 15 min
 @ 326 MCFGPD, rec 120' HG&SOCM, 1 hr 10 min
 ISIP 2424#, FP 237-362#, FSIP 2424#
 DSI 6508-66' (Drinkard), open 1 hr 5 min, GTS
 32 min, @ TSTM, rec 75' VSGCM, 1 hr ISIP 2032#,
 FP 67-79#, FSIP 2320#
 7-14-69 ID 7020'; Prep perf
 DST 6635-6704' (Drinkard), open 2 hrs, GTS 6 min

LEA Hobbs NM Sec 32, T-18-S, R-38-E
SHELL OIL CO. #7 Shell "A" State Page 2

7-14-69

Continued

7-21-69

@ max 326 MCFGPD, rec 250' SO&GCM, 2 hr ISIP
2639#, FP 169-192#, 2 hr FSIP 2598#

TD 7020'; PBD 6981'; Swbg

Perf @ 6930', 6932' w/2 SPI

Acid (6930-32') 1500 gals (15%)

Swbd 37 BF in 7 hrs (6930-32')

Acid (6930-32') 3000 gals

Swbd 60 BO + 5 BW in 10 hrs (6930-32')

TD 7020'; PBD 6981'; COMPLETE

LOG TOPS: Yates 2629', Queen 3353', Grayburg

3667', San Andres 3953', Glorieta 5310',

~~Blind~~ 6418', Drinkard 6523'

7-31-69

COMPLETION REPORTED

5750

1EA

SPEL: CIL 10.

11-3-69

Sup 32, 318S, R38E

Page #2

11-3-69

And (1000-0000) 1000 gals
SPEL (1000-0000) in 10 hrs (6008-26')
SPEL (6008-6000) w/ 50 ex
SPEL (6008-6000) w/ 75 ex
Port @ 5879', 5884', 5889', 5879', 5909',
5909', 5906', 5906', 5906', 5906' w/1 SFI
A (5889-5906') 1000 gals
L (5889-5906') 1000 gals
R (5889-5906') 1000 gals
LIMITATION REPORT

11-6-69

REVISED *

NEW MEXICO OIL CONSERVATION COMMISSION
WELL LOCATION AND ACREAGE DEDICATION PLAT

Form C-102
 Supersedes C-128
 Effective 1-1-65

All distances must be from the outer boundaries of the Section.

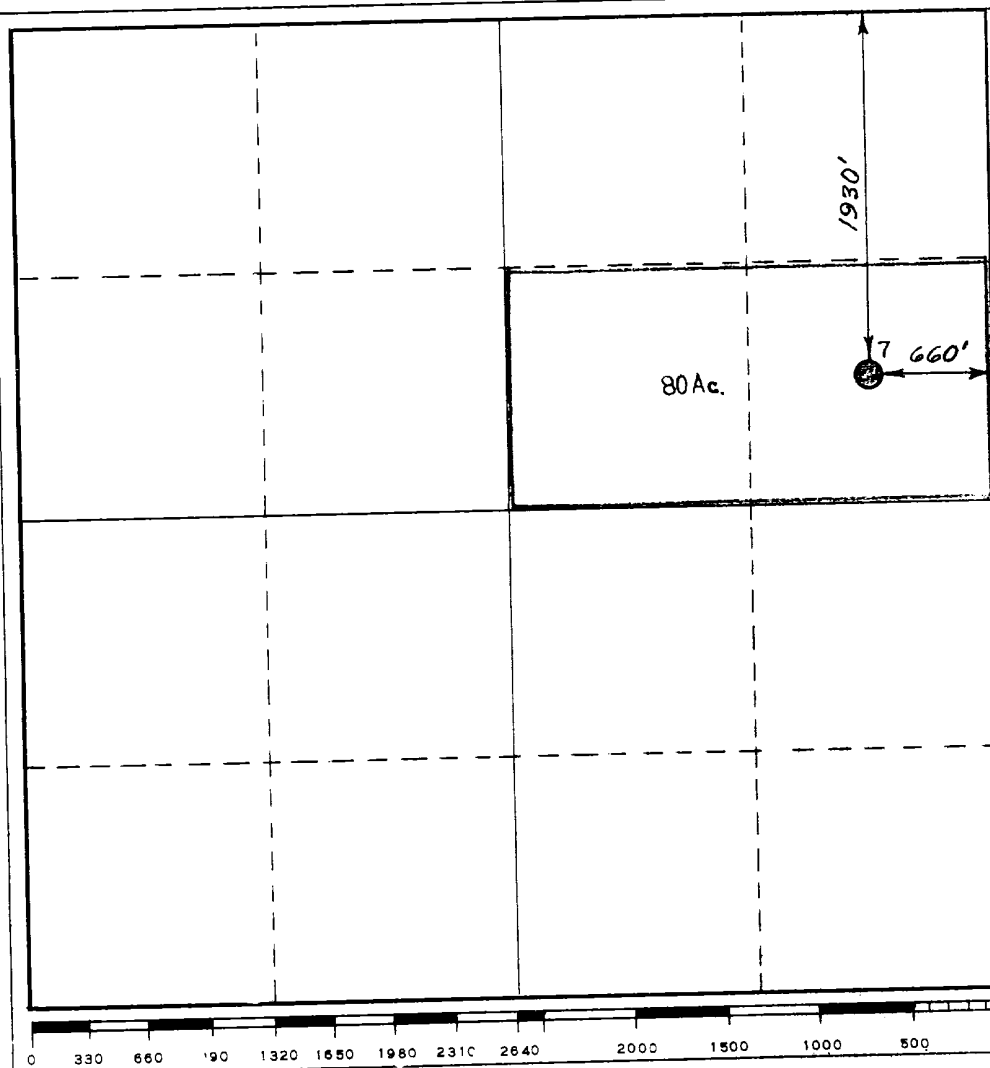
Operator Shell Oil Company		Lease Shell A State 1159		Well No. 7
Unit Letter H	Section 32	Township 18-S	Range 38-E	County Lea
Actual Footage Location of Well: 1930 feet from the north line and 660 feet from the east line				
Ground Level Elev. 3646' DF	Producing Formation Drinkard	Pool Hobbs Drinkard	Dedicated Acreage: 80 * Acres	

1. Outline the acreage dedicated to the subject well by colored pencil or hatchure marks on the plat below.
2. If more than one lease is dedicated to the well, outline each and identify the ownership thereof (both as to working interest and royalty).
3. If more than one lease of different ownership is dedicated to the well, have the interests of all owners been consolidated by communitization, unitization, force-pooling, etc?

☐ Yes ☐ No If answer is "yes," type of consolidation _____

If answer is "no," list the owners and tract descriptions which have actually been consolidated. (Use reverse side of this form if necessary.) _____

No allowable will be assigned to the well until all interests have been consolidated (by communitization, unitization, forced-pooling, or otherwise) or until a non-standard unit, eliminating such interests, has been approved by the Commission.



CERTIFICATION

I hereby certify that the information contained herein is true and complete to the best of my knowledge and belief.

J. D. Dura
 Name

Staff Operations Engineer
 Position

Shell Oil Company
 Company

August 20, 1969
 Date

I hereby certify that the well location shown on this plat was plotted from notes of actual surveys made by me under my supervision, and that is true and correct to the best of my knowledge and belief.

Date Surveyed _____

Registered Professional Engineer and/or Land Surveyor

Certificate No. _____