

NO. OF COPIES RECEIVED	
DISTRIBUTION	
SANTA FE	
FILE	
U.S.G.S.	
LAND OFFICE	
OPERATOR	

NEW MEXICO OIL CONSERVATION COMMISSION

Form C-101
Revised 1-4-65

5A. Indicate Type of Lease
STATE FEE

5. State Oil & Gas Lease No.

APPLICATION FOR PERMIT TO DRILL, DEEPEN, OR PLUG BACK

1a. Type of Work

b. Type of Well DRILL DEEPEN PLUG BACK
 OIL WELL GAS WELL OTHER Water Injection SINGLE ZONE MULTIPLE ZONE

2. Name of Operator
Texaco Inc.

3. Address of Operator
P. O. Box 3109 Midland, Texas 79702

4. Location of Well UNIT LETTER E LOCATED 1408 FEET FROM THE North LINE
AND 1211 FEET FROM THE West LINE OF SEC. 6 TWP. 18-S RSE. 35-E NMDM

7. Unit Agreement Name

8. Farm or Lease Name
Central Vacuum Unit

9. Well No.
99

10. Field and Pool, or Wildcat
Vacuum Grayburg-3.A.

11. County
Lea

12. Formation
Grayburg-S.A.

13. Rotary or P.C.
Rotary

14. Approx. Date Work will start
11-8-77

21. Elevations (Show whether DP, RL, etc.)
Unknown

21A. Kind & Status (Plug, Bond, etc.)

21B. Drilling Contractor

23. PROPOSED CASING AND CEMENT PROGRAM

SIZE OF HOLE	SIZE OF CASING	WEIGHT PER FOOT	SETTING DEPTH	SACKS OF CEMENT	EST. TOP
11"	8 5/8"	24#K-55 STC	350'	200 sx	Circulate
7 7/8"	4 1/2"	10.5#K-55STC	4800'	2800 sx	Circulate

Surface Casing: 200 sx class "C" w/2% Cacl, 14.8#/gal < 300% to circulate-cement must circulate.

Production Casing: Cement first stage w/250 sx Halliburton Lite w/5#/sx Gilsonite & 8#/sx salt followed by 500 sx class "C" cement with 8#/sx salt & 1/2% CFR-2: open DV tool @ 2500' circulate 4-6 hrs. Second stage 1800 sx Halliburton Lite w/18% salt + 250 sx class "C" cement w/18% salt.

IN ABOVE SPACE DESCRIBE PROPOSED PROGRAM; IF PROPOSAL IS TO DEEPEN OR PLUG BACK, GIVE DATA ON PRESENT PRODUCTIVE ZONE AND PROPOSED NEW PRODUCTIVE ZONE. GIVE BLOWOUT PREVENTER PROGRAM, IF ANY.

I hereby certify that the information above is true and complete to the best of my knowledge and belief.

Signed Sal Allen Title Assistant Div. Petr. Engr. Date 10-31-77

(This space for State Use)

APPROVED BY [Signature] TITLE DATE

CONDITIONS OF APPROVAL, IF ANY:

JAN 9 1978

NEW MEXICO OIL CONSERVATION COMMISSION
WELL LOCATION AND ACREAGE DEDICATION PL

Form C-102
Supersedes C-128
Effective 1-1-65

All distances must be from the outer boundaries of the Section.

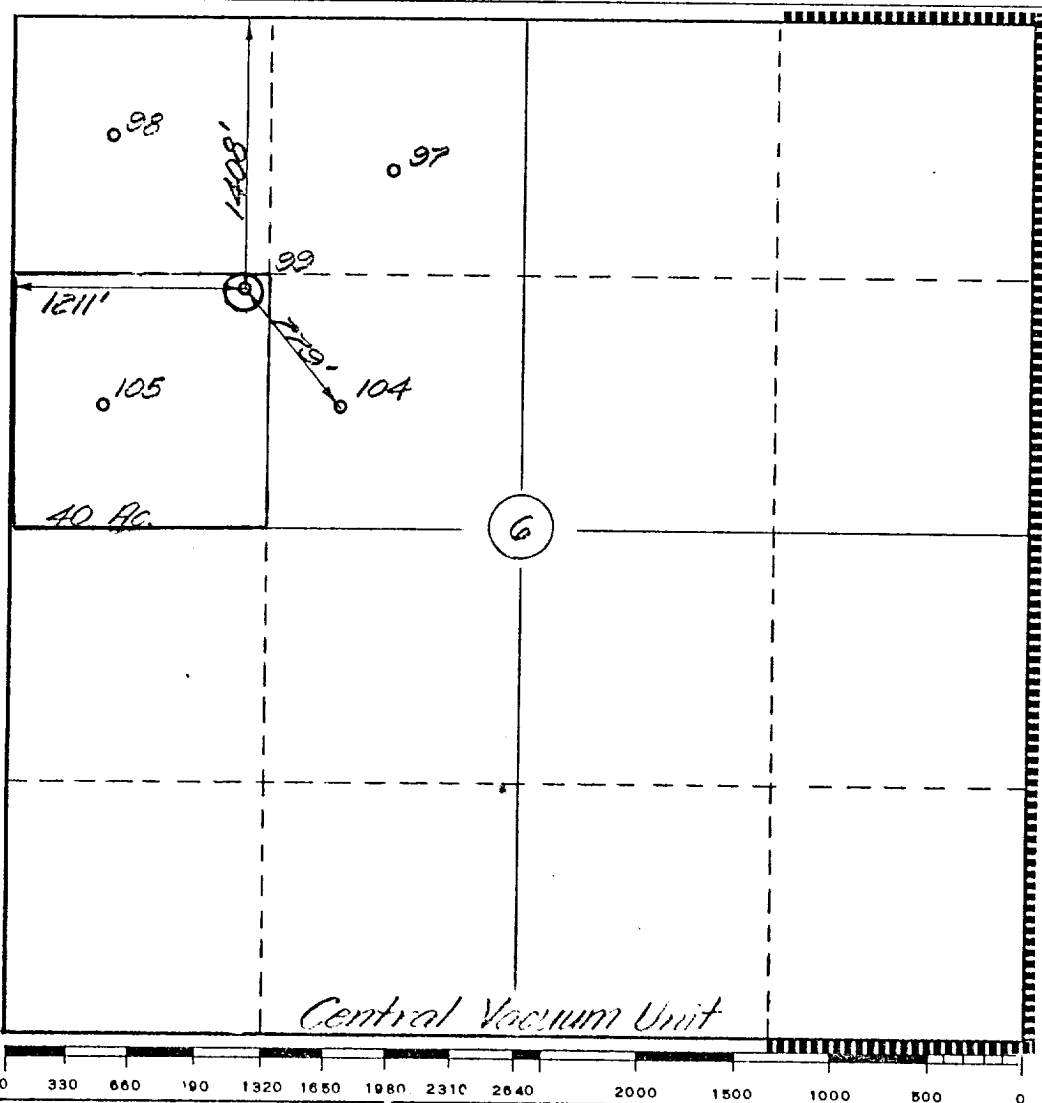
Operator Texaco Inc.		Lease Central Vacuum Unit			Well No. 99
Unit Letter E	Section 6	Township T-18-S	Range R-35-E	County Lea	
Actual Footage Location of Well: 1408 feet from the North line and 1211 feet from the West line Sec. 6					
Ground Level Elev. Unknown	Producing Formation Grayburg San Andres		Pool Vacuum Grayburg San Andres		Dedicated Acreage: 40 Acres

- Outline the acreage dedicated to the subject well by colored pencil or hachure marks on the plat below.
- If more than one lease is dedicated to the well, outline each and identify the ownership thereof (both as to working interest and royalty).
- If more than one lease of different ownership is dedicated to the well, have the interests of all owners been consolidated by communitization, unitization, force-pooling, etc?

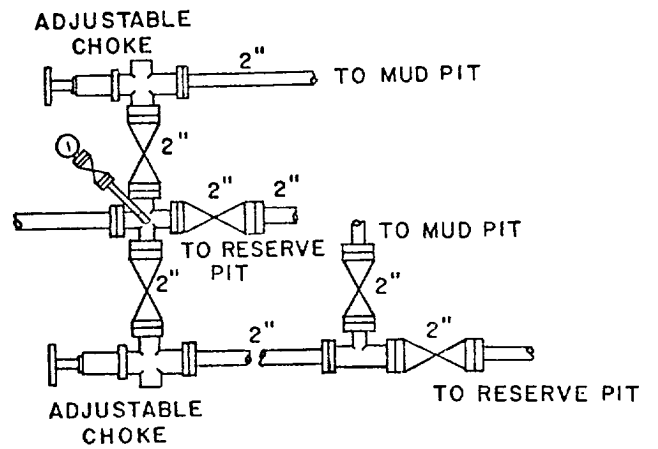
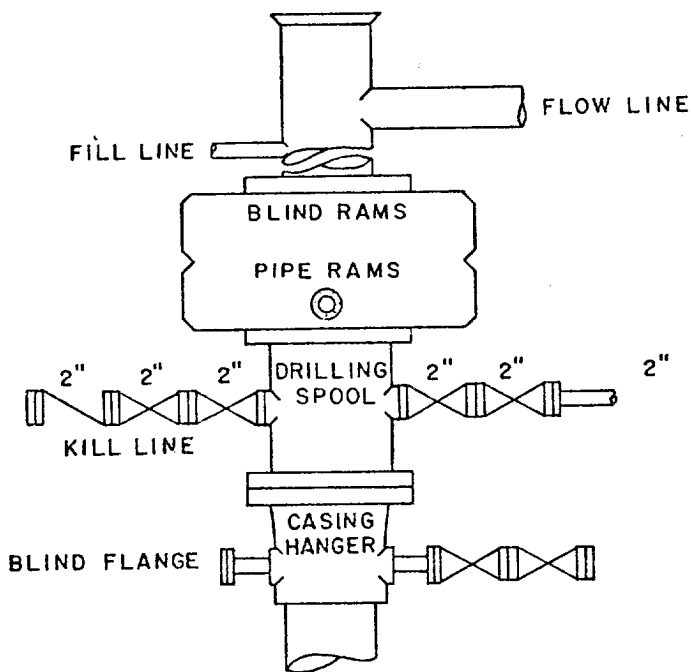
Yes No If answer is "yes," type of consolidation _____

If answer is "no," list the owners and tract descriptions which have actually been consolidated. (Use reverse side of this form if necessary.) _____

No allowable will be assigned to the well until all interests have been consolidated (by communitization, unitization, forced-pooling, or otherwise) or until a non-standard unit, eliminating such interests, has been approved by the Commission.



CERTIFICATION	
I hereby certify that the information contained herein is true and complete to the best of my knowledge and belief.	
Name	B. L. Eiland
Position	Division Surveyor
Company	Texaco Inc.
Date	10-31-77
I hereby certify that the well location shown on this plat was plotted from field notes of actual surveys made by me or under my supervision, and that the same is true and correct to the best of my knowledge and belief.	
Date Surveyed	10-13-77
Registered Professional Engineer and/or Land Surveyor	
B. L. Eiland	
Certificate No.	4386



SCALE: NONE	DATE	EST. NO.	DRG. NO.
DRAWN BY JWD			
CHECKED BY RDW			
APPROVED BY			



TEXACO, INC.
 PRODUCING DEPARTMENT-U.S. (EAST)
 MIDLAND, TEXAS



EXHIBIT "B"