

30-025-26824

NO. OF COPIES RECEIVED	
DISTRIBUTION	
5. NYA FE	
FILE	
U.S.G.S.	
LAND OFFICE	
OPERATOR	

NEW MEXICO OIL CONSERVATION COMMISSION

Form C-101  
Revised 1-1-65

5-NMOCD-HOBBS                      1-FILE  
 1-R. J. STARRAK-TULSA            1-PWS, ENGR.  
 1-A. B. CARY-MIDLAND

5A. Indicate Type of Lease  
 STATE  FEE

5. State Oil & Gas Lease No.

APPLICATION FOR PERMIT TO DRILL, DEEPEN, OR PLUG BACK

1a. Type of Work  
 DRILL                       DEEPEN                       PLUG BACK   
 b. Type of Well  
 OIL WELL                       GAS WELL                       OTHER   
 SINGLE ZONE                       MULTIPLE ZONE

7. Unit Agreement Name

8. Farm or Lease Name  
 Hobbs "N"

2. Name of Operator  
 Getty Oil Company

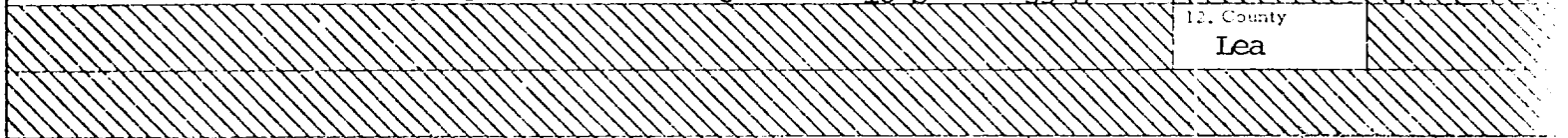
9. Well No.  
 6

3. Address of Operator  
 P. O. Box 730, Hobbs, New Mexico 88240

10. Field and Pool, or Willcat  
 Vac Abo Reef

4. Location of Well  
 UNIT LETTER G LOCATED 1980 FEET FROM THE North LINE  
 AND 1980 FEET FROM THE East LINE OF SEC. 8 TWP. 18-S RGE. 35-E NMPM

12. County  
 Lea



18. Proposed Depth 9300                      19A. Formation Vac Abo Reef                      20. Rotary or C.T. Rotary

21. Elevation (show whether DF, RL, etc.) 3948.8                      21A. Kind & Status Plug. Bond Blanket                      21B. Drilling Contractor Pending                      22. Approx. Date Work will start Pending

23. PROPOSED CASING AND CEMENT PROGRAM

SIZE OF HOLE	SIZE OF CASING	WEIGHT PER FOOT	SETTING DEPTH	SACKS OF CEMENT	EST. TOP
15	11 3/4	42	300'	285'	Surface
10 5/8	8 5/8	24 & 32	3300'	765'	Surface
7 7/8	5 1/2	15.5 & 17	9300'	755'	Surface

It is proposed to drill the subject well from the surface to a total depth of approximately 9300' with rotary tools in order to test the Vac Abo Reef formation for oil. The pump and plug process will be used for cementing all strings of casing and attempts will be made to circulate cement to surface on all strings of casing. The 5 1/2" casing will be perforated as indicated by electric logs opposite the Vac Abo Reef formation.

The drilling fluid will be brine water and mud of sufficient weight to condition the hole for logging and running csg. to 9300'. BOP will be installed and tested to 5000 psi.

NOTE: A DV tool will be set at the top of the San Andres at approximately 4000'.

IN ABOVE SPACE DESCRIBE PROPOSED PROGRAM: IF PROPOSAL IS TO DEEPEN OR PLUG BACK, GIVE DATA ON PRESENT PRODUCTIVE ZONE AND PROPOSED NEW PRODUCTIVE ZONE. GIVE BLOWOUT PREVENTER PROGRAM, IF ANY.

I hereby certify that the information above is true and complete to the best of my knowledge and belief.

Signed [Signature] Title Area Superintendent Date 5/21/80  
Date R. Crockett  
 (This space for State Use)

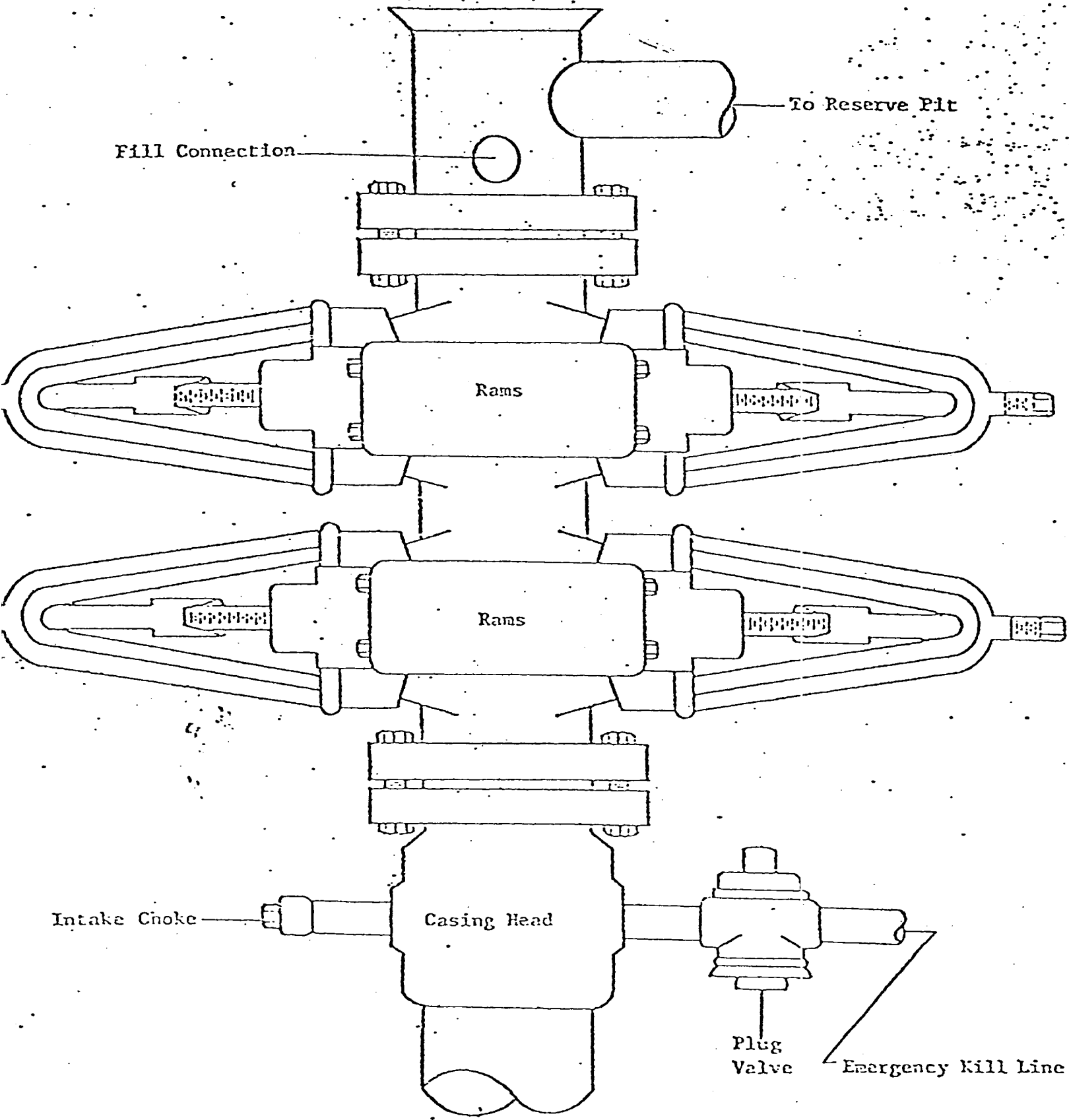
**SUPERVISOR DISTRICT 1**

**MAY 26 1980**

APPROVED BY [Signature] TITLE \_\_\_\_\_ DATE \_\_\_\_\_

CONDITIONS OF APPROVAL, IF ANY:

0 PSI WORKING PRESSURE.  
DRILLING CONTROL HOOK-UP



NE EXICO OIL CONSERVATION COMMISS  
WELL LOCATION AND ACREAGE DEDICATION PLAT

Form C-102  
Supersedes C-128  
Effective 1-1-65

All distances must be from the outer boundaries of the Section.

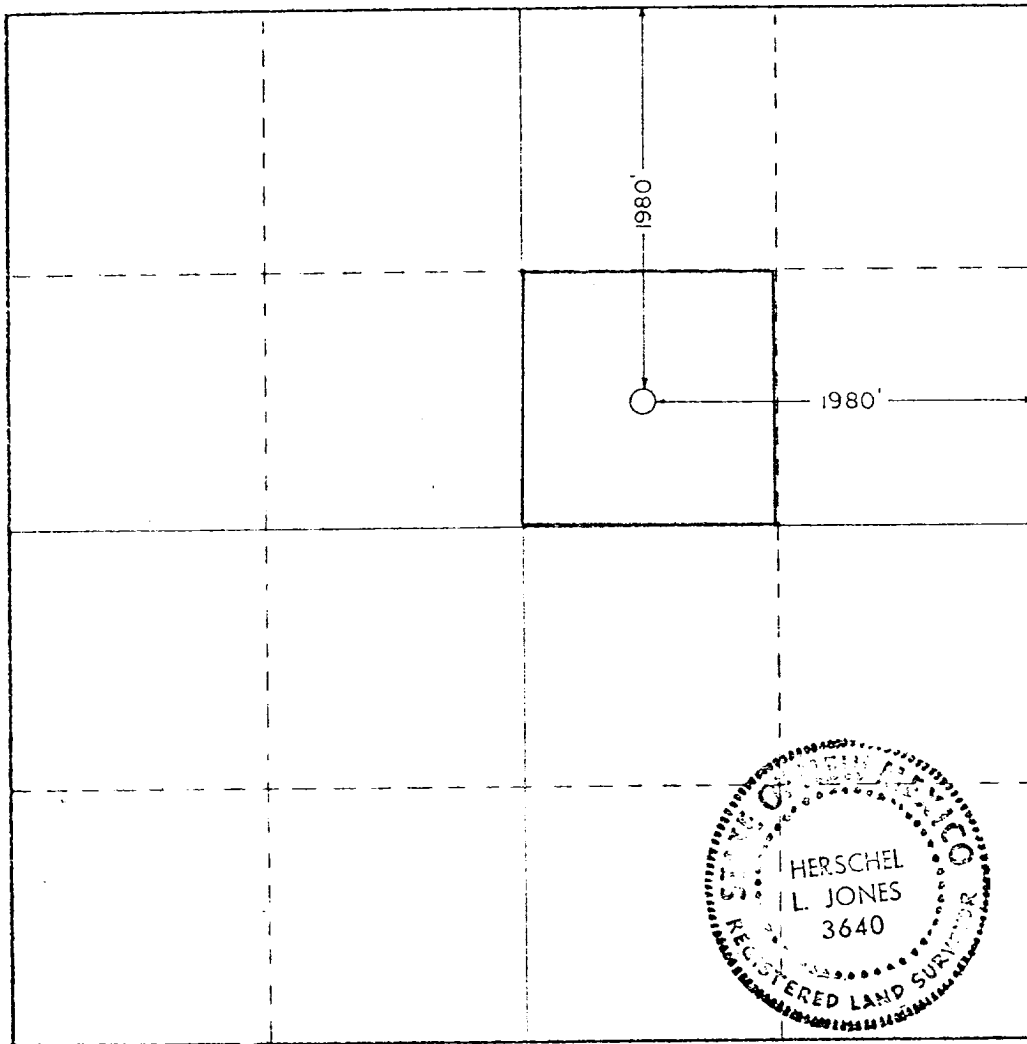
Operator <b>GETTY OIL COMPANY</b>			Lease <b>Hobbs N No. 6</b>		Well No. <b>6</b>
Tract Letter <b>'G'</b>	Section <b>8</b>	Township <b>18 South</b>	Range <b>35 East</b>	County <b>Lea</b>	
Actual Footage Location of Well:					
1980 feet from the North line and		1980 feet from the East line			
Ground Level Elev. <b>3943.8</b>	Producing Formation <b>Vac Abo Reef</b>	Pool <b>Vac Abo Reef Pool</b>	Dedicated Acreage: <b>40</b> Acres		

1. Outline the acreage dedicated to the subject well by colored pencil or hachure marks on the plat below.
2. If more than one lease is dedicated to the well, outline each and identify the ownership thereof (both as to working interest and royalty).
3. If more than one lease of different ownership is dedicated to the well, have the interests of all owners been consolidated by communitization, unitization, force-pooling, etc?

Yes  No If answer is "yes," type of consolidation \_\_\_\_\_

If answer is "no," list the owners and tract descriptions which have actually been consolidated (Use reverse side of this form if necessary.) \_\_\_\_\_

No allowable will be assigned to the well until all interests have been consolidated (by communitization, unitization, forced-pooling, or otherwise) or until a non-standard unit, eliminating such interests, has been approved by the Commission.



CERTIFICATION

I hereby certify that the information contained herein is true and complete to the best of my knowledge and belief.

*Dale R. Crockett*  
Name

Dale R. Crockett

Position

Area Superintendent

Company

Getty Oil Company

Date

May 21, 1980

I hereby certify that the well location shown on this plat was plotted from field notes of actual surveys made by me or under my supervision, and that the same is true and correct to the best of my knowledge and belief.

Date Surveyed

May 12, 1980

Registered Professional Engineer and/or Land Surveyor

*Herschel L. Jones*  
Certificate No.

3640

0 500 1000 1500 2000 2500 2640 2310 1950 1650 1320 950 650 330

