

NO. OF COPIES RECEIVED	
DISTRIBUTION	
SANTA FE	
FILE	
U.S.G.S.	
LAND OFFICE	
OPERATOR	

P. O. BOX 2088

SANTA FE, NEW MEXICO 87501

\*AMENDED COPY

API# 30-025-28432

5A. Indicate Type of Lease  
STATE  FEE

5. State Oil & Gas Lease No.  
B-2073

APPLICATION FOR PERMIT TO DRILL, DEEPEN, OR PLUG BACK

1a. Type of Work  
DRILL  DEEPEN  PLUG BACK

b. Type of Well  
OIL WELL  GAS WELL  OTHER   
SINGLE ZONE  MULTIPLE ZONE

2. Name of Operator  
Phillips Petroleum Company

3. Address of Operator:  
Room 401, 4001 Penbrook Street, Odessa, Texas 79762

4. Location of Well  
UNIT LETTER 0 LOCATED 560 FEET FROM THE South LINE  
AND 1835 FEET FROM THE East LINE OF SEC. 31 TWP. 18-S RCE. 37-E

7. Unit Agreement Name  
-----

8. Form or Lease Name  
Cheryl-A

9. Well No.  
2

10. Field and Pool, or Wildcat  
Eumont-Oil

11. County  
Lea

19. Proposed Depth 4,100'  
19A. Formation Penrose (Queen)  
20. Rotary or C.T. Rotary

21. Elevations (Show whether DT, RT, etc.) 3728.7' Gr (Unprepared)  
21A. Kind & Status Plug. Bond Blanket  
21B. Drilling Contractor Advise later  
22. Approx. Date Work will start upon approval

23. PROPOSED CASING AND CEMENT PROGRAM

SIZE OF HOLE	SIZE OF CASING	WEIGHT PER FOOT	SETTING DEPTH	SACKS OF CEMENT	EST. TOP
12 1/4"	8 5/8"	24#, K-55, ST&C	300'	350 Sx Class "C"	w/2% CaCl <sub>2</sub> &
				1/4# sx Cellophane.	Circ. to surface.
7 7/8"	4 1/2"	11.6#, N-80	4,100	Caliper Volume + 30% excess	
				TLW w/10% Diacel D & 12#/sx salt & 1/4#/sx	
				Cellophane & 3#/sx Gilsonite	
					Circ. to surface.

\*Amended to change well location

Use mud additives as required for control

BOP Equipment: Series 900, 3000# WP, per PPCo Standards, Per Figure 7-9 or 7-10 attached.

APPROVAL VALID FOR 180 DAYS  
PERMIT EXPIRES 4/24/84  
UNLESS DRILLING UNDERWAY

IN ABOVE SPACE DESCRIBE PROPOSED PROGRAM; IF PROPOSAL IS TO DEEPEN OR PLUG BACK, GIVE DATA ON PRESENT PRODUCTIVE ZONE AND PROPOSED NEW PRODU-  
TIVE ZONE, GIVE BLOWOUT PREVENTER PROGRAM, IF ANY.

I hereby certify that the information above is true and complete to the best of my knowledge and belief.

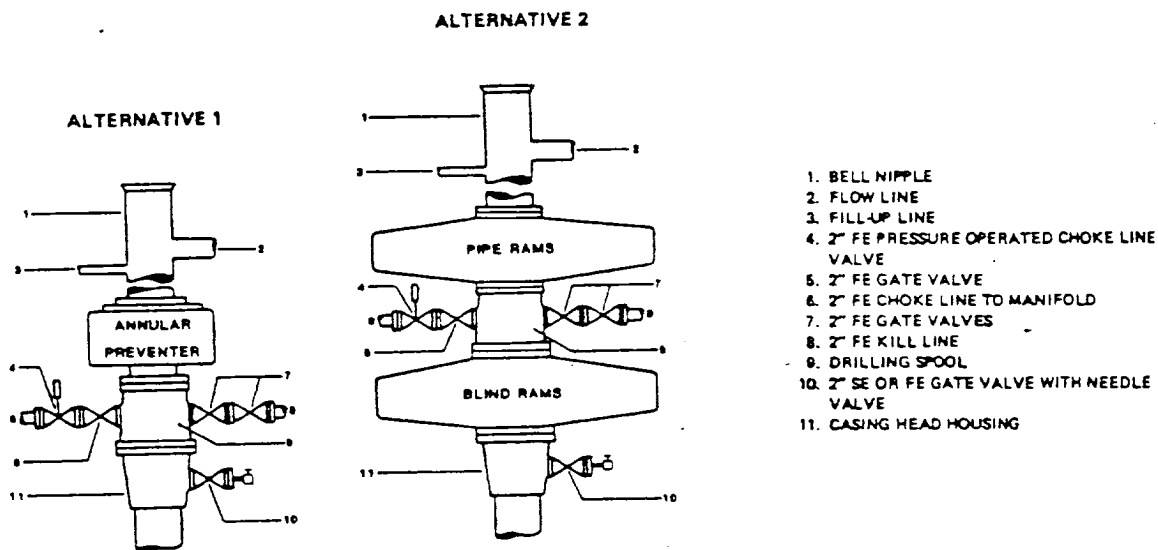
Signed [Signature] W. J. Mueller Title Sr. Engineering Specialist Date October 21, 1982

(This space for State Use)

ORIGINAL SIGNED BY JERRY SEXTON  
APPROVED BY \_\_\_\_\_ TITLE \_\_\_\_\_ DATE OCT 24 1983  
DISTRICT 1 SUPERVISOR

CONDITIONS OF APPROVAL, IF ANY:

# FIELD PRACTICES AND STANDARDS



NOTE: THE DRILLING SPOOL MAY BE LOCATED BELOW BOTH SETS OF RAMS IF A DOUBLE PREVENTER IS USED AND IT DOES NOT HAVE SUITABLE OUTLETS BETWEEN RAMS

Figure 7-9. Standard Hydraulic Blowout Preventer Assembly (2 M or 3 M Working Pressure) Alternative 1

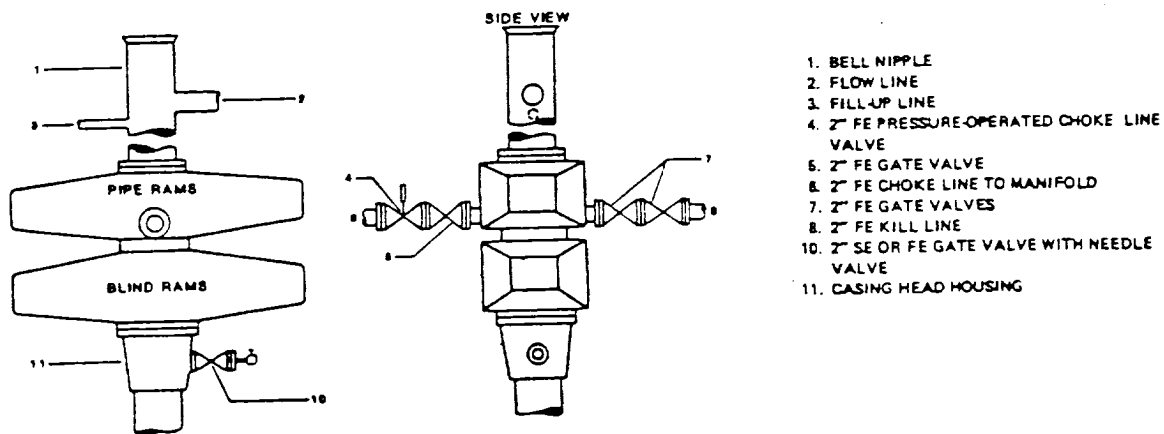


Figure 7-10. Standard Hydraulic Blowout Preventer Assembly (2 M or 3 M Working Pressure) Alternative 3 (without Drilling Spool)

NEW MEXICO OIL CONSERVATION COMMISSION  
WELL LOCATION AND ACREAGE DEDICATION PLAT

Form C-102  
Supersedes C-128  
Effective 1-4-65

\*AMENDED COPY

All distances must be from the outer boundaries of the Section.

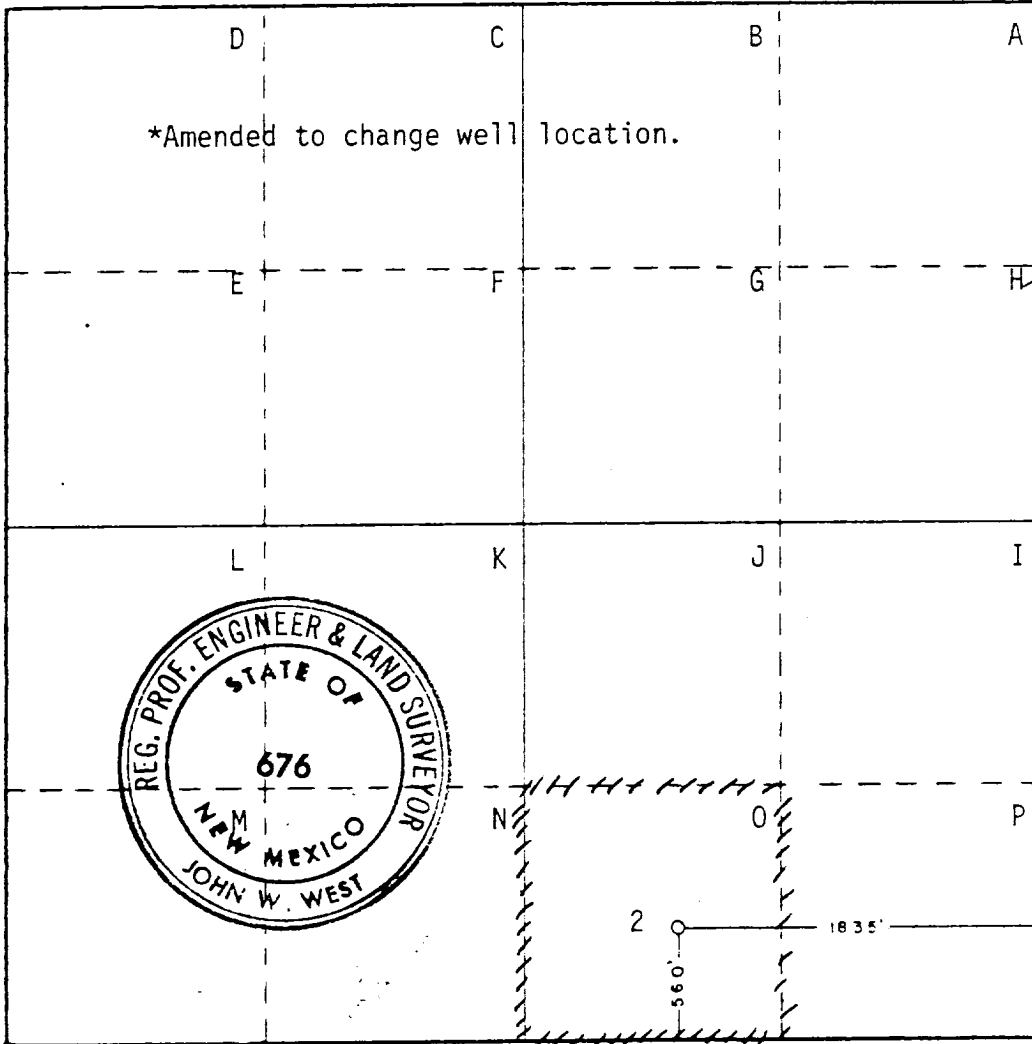
Operator <b>PHILLIPS PETROLEUM CO.</b>		Lease <b>CHERYL "A"</b>		Well No. <b>2</b>
Section Letter <b>0</b>	Section <b>31</b>	Township <b>18 SOUTH</b>	Range <b>37 EAST</b>	County <b>LEA</b>
Actual Footage Location of Well: <b>560</b> feet from the <b>SOUTH</b> line and <b>1835</b> feet from the <b>EAST</b> line				
Ground Level Elev. <b>3728.7</b>	Producing Formation	Pool	Dedicated Acreage: <b>Acres</b>	

1. Outline the acreage dedicated to the subject well by colored pencil or hachure marks on the plat below.
2. If more than one lease is dedicated to the well, outline each and identify the ownership thereof (both as to working interest and royalty).
3. If more than one lease of different ownership is dedicated to the well, have the interests of all owners been consolidated by communitization, unitization, force-pooling, etc?

Yes  No If answer is "yes," type of consolidation \_\_\_\_\_

If answer is "no," list the owners and tract descriptions which have actually been consolidated. (Use reverse side of this form if necessary.) \_\_\_\_\_

No allowable will be assigned to the well until all interests have been consolidated (by communitization, unitization, forced-pooling, or otherwise) or until a non-standard unit, eliminating such interests, has been approved by the Commission.



**CERTIFICATION**

I hereby certify that the information contained herein is true and complete to the best of my knowledge and belief.

*W. J. Mueller*  
**W. J. Mueller**

**Sr. Engineering Specialist**  
Position  
**Phillips Petroleum Company**  
Company  
**October 21, 1983**  
Date

I hereby certify that the well location shown on this plat was plotted from field notes of actual surveys made by me or under my supervision, and that the same is true and correct to the best of my knowledge and belief.

Date Surveyed  
**OCTOBER 18, 1983**

Registered Professional Engineer and/or Land Surveyor  
*John W. West*

Certificate No **JOHN W. WEST. 676**  
RONALD L. FINSON 3239