

NEW MEXICO OIL CONSERVATION COMMISSION
WELL LOCATION AND ACREAGE DEDICATION PLAT

Form C-102
Supersedes C-128
Effective 1-1-65

All distances must be from the outer boundaries of the Section.

Operator YATES PETROLEUM CORPORATION			Lease Lusk AHB Federal		Well No. 3
Unit Letter J	Section 35	Township 19 South	Range 32 East	County Lea County, N.M.	

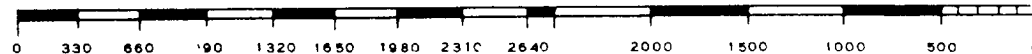
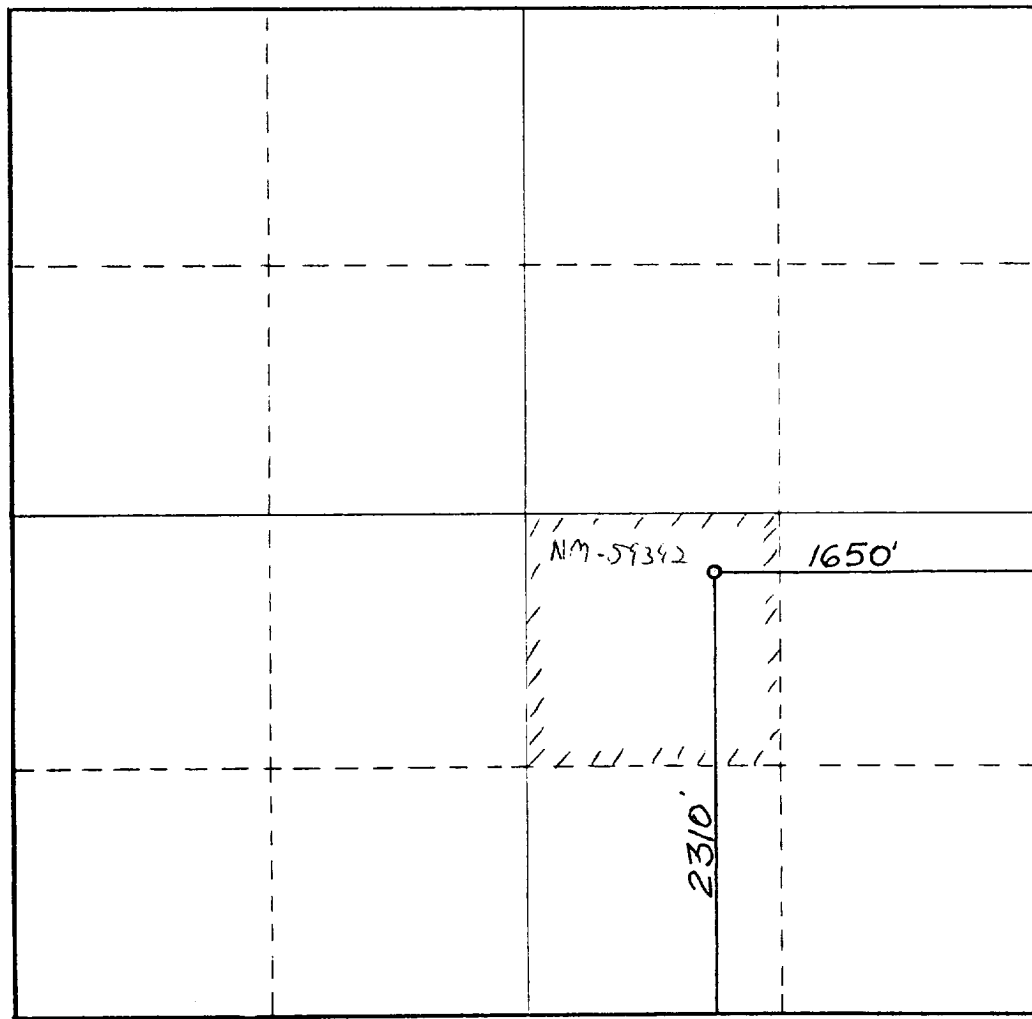
Actual Footage Location of Well:
2310 feet from the **South** line and **1650** feet from the **East** line
 Ground Level Elev. **3558.** Producing Formation **DELTAWART** Pool **WILDCAT** Dedicated Acreage: **40** Acres

1. Outline the acreage dedicated to the subject well by colored pencil or hachure marks on the plat below.
2. If more than one lease is dedicated to the well, outline each and identify the ownership thereof (both as to working interest and royalty).
3. If more than one lease of different ownership is dedicated to the well, have the interests of all owners been consolidated by communitization, unitization, force-pooling, etc?

Yes No If answer is "yes," type of consolidation _____

If answer is "no," list the owners and tract descriptions which have actually been consolidated. (Use reverse side of this form if necessary.) _____

No allowable will be assigned to the well until all interests have been consolidated (by communitization, unitization, forced-pooling, or otherwise) or until a non-standard unit, eliminating such interests, has been approved by the Commission.



CERTIFICATION
 I hereby certify that the information contained herein is true and complete to the best of my knowledge and belief.

Name: **Clifton R. May**
 Position: **PERMITS AGENT**
 Company: **YATES PETROLEUM CORPORATION**
 Date: **11-26-90**

I hereby certify that the well location shown on this plat was plotted from field notes of actual surveys made by me or under my supervision, and that the same is true and correct to the best of my knowledge and belief.

AN R. REDDY
REGISTERED PROFESSIONAL ENGINEER AND SURVEYOR
NEW MEXICO
5412

Date Surveyed: **November 19, 1990**
 Registered Professional Engineer and/or Land Surveyor
Jan R. Reddy
 Certificate No. **NM PE&PS NO. 5412**