

APPLICATION FOR PERMIT TO DRILL, DEEPEN, OR PLUG BACK

1a. TYPE OF WORK

DRILL ☒

DEEPEN ☐

PLUG BACK ☐

b. TYPE OF WELL

OIL WELL ☒

GAS WELL ☐

OTHER

SINGLE ZONE ☒

MULTIPLE ZONE ☐

2. NAME OF OPERATOR

ROBERT N. ENFIELD

3. ADDRESS OF OPERATOR

P. O. BOX 2431. SANTA FE, NEW MEXICO 87501

4. LOCATION OF WELL (Report location clearly and in accordance with any State requirements.)

At surface

560' FSL AND 1880' FEL OF SECTION 29

At proposed prod. zone

14. DISTANCE IN MILES AND DIRECTION FROM NEAREST TOWN OR POST OFFICE*

10 MILES SOUTH-SOUTHEAST OF MALJAMAR, NEW MEXICO

15. DISTANCE FROM PROPOSED*

LOCATION TO NEAREST
PROPERTY OR LEASE LINE, FT.
(Also to nearest drlg. unit line, if any)

560'

16. NO. OF ACRES IN LEASE

2470.16

17. NO. OF ACRES ASSIGNED
TO THIS WELL

40

18. DISTANCE FROM PROPOSED LOCATION*
TO NEAREST WELL, DRILLING, COMPLETED,
OR APPLIED FOR, ON THIS LEASE, FT.

1420'

19. PROPOSED DEPTH

4800'

20. ROTARY OR CABLE TOOLS

ROTARY

21. ELEVATIONS (Show whether DF, RT, GR, etc.)

3762.0 GR

22. APPROX. DATE WORK WILL START*

UPON APPROVAL

23.

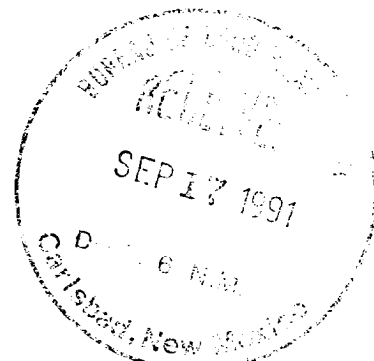
PROPOSED CASING AND CEMENTING PROGRAM

Captain Controlled Water Basin

SIZE OF HOLE	SIZE OF CASING	WEIGHT PER FOOT	SETTING DEPTH	QUANTITY OF CEMENT
12-1/4"	8-5/8"	24#	400'	SUFFICIENT TO CIRCULATE
7-7/8"	4-1/2"	9.5#	4800'	300 SACKS - SEE STIPS.

AFTER SETTING PRODUCTION CASING, PAY ZONE WILL BE PERFORATED AND
STIMULATED AS NECESSARY.

SEE ATTACHED FOR: SUPPLEMENTAL DRILLING DATA
BOP SKETCH
SURFACE USE AND OPERATIONS PLAN



IN ABOVE SPACE DESCRIBE PROPOSED PROGRAM: If proposal is to deepen or plug back, give data on present productive zone and proposed new productive zone. If proposal is to drill or deepen directionally, give pertinent data on subsurface locations and measured and true vertical depths. Give blowout preventer program, if any.

24.

SIGNED

Arthur R. Brown

TITLE

Agent

DATE Sept. 16, 1991

(This space for Federal or State office use)

PERMIT NO.

APPROVAL DATE

APPROVED BY

TITLE

DATE

CONDITIONS OF APPROVAL IF ANY:

GENERAL REQUIREMENTS AND

SPECIAL STIPULATIONS

ATTACHED

*See Instructions On Reverse Side

Submit to Appropriate
District Office
State Lease - 4 copies
Fee Lease - 3 copies

State of New Mexico
Energy, Minerals and Natural Resources Department

Form C-102
Revised 1-1-89

OIL CONSERVATION DIVISION

P.O. Box 2088

Santa Fe, New Mexico 87504-2088

DISTRICT I

P.O. Box 1980, Hobbs, NM 88240

DISTRICT II

P.O. Drawer DD, Artesia, NM 88210

DISTRICT III

1000 Rio Brazos Rd., Aztec, NM 87410

WELL LOCATION AND ACREAGE DEDICATION PLAT

All Distances must be from the outer boundaries of the section

Operator ROBERT N. ENFIELD			Lease HUDSON FEDERAL		Well No. 6
Unit Letter 0	Section 29	Township 18 SOUTH	Range 33 EAST	County LEA	
Actual Footage Location of Well: 560 feet from the SOUTH line and 1880 feet from the EAST line					
Ground level Elev. 3762.0	Producing Formation QUEEN		Pool UNDESIGNATED BUFFALO QUEEN	Dedicated Acreage: 40 Acres	

1. Outline the acreage dedicated to the subject well by colored pencil or hatchure marks on the plat below.

2. If more than one lease is dedicated to the well, outline each and identify the ownership thereof (both as to working interest and royalty).

3. If more than one lease of different ownership is dedicated to the well, have the interest of all owners been consolidated by communitization, unitization, force-pooling, etc.?

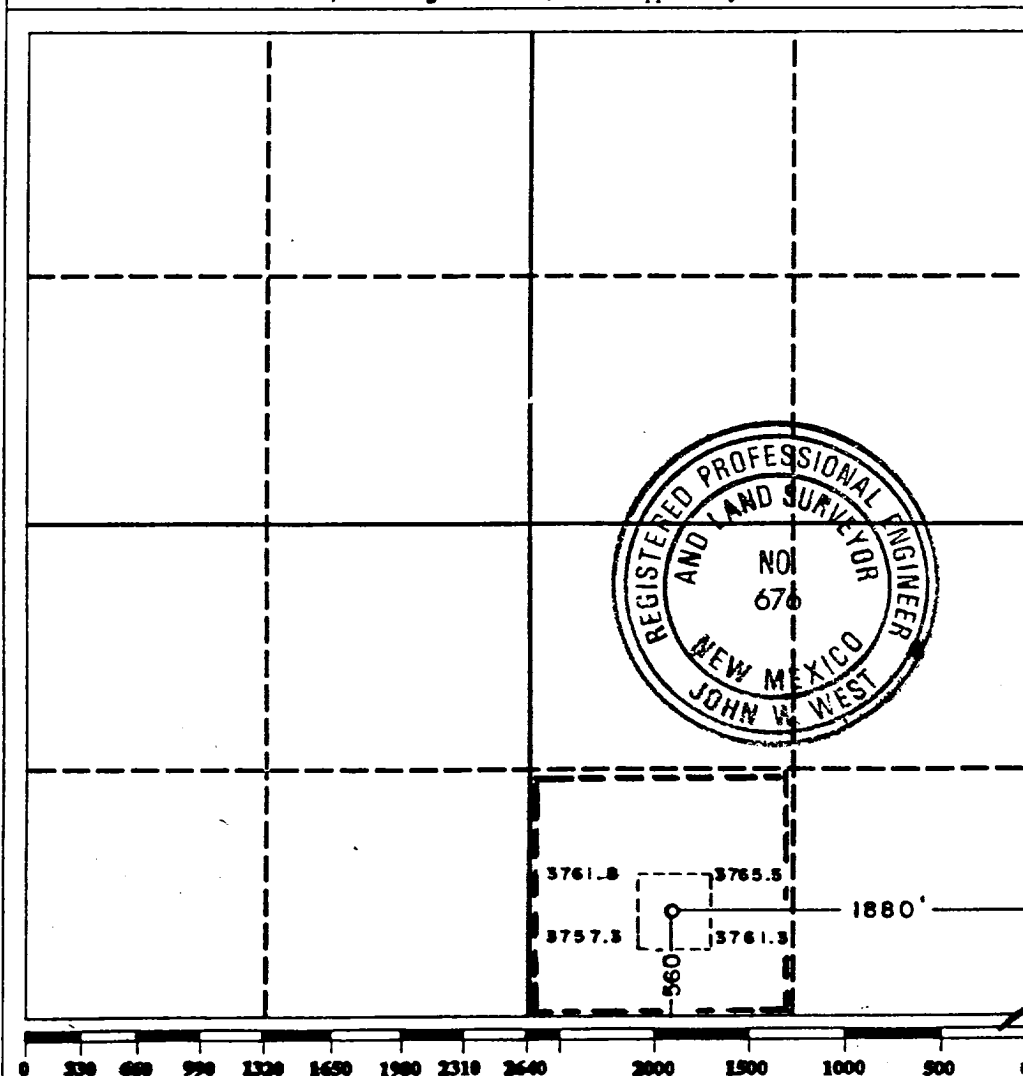
☐ Yes

☐ No

If answer is "yes" type of consolidation

If answer is "no" list the owners and tract descriptions which have actually been consolidated. (Use reverse side of this form if necessary.)

No allowable will be assigned to the well until all interests have been consolidated (by communitization, unitization, forced-pooling, or otherwise) or until a non-standard unit, eliminating such interest, has been approved by the Division.



OPERATOR CERTIFICATION

I hereby certify that the information contained herein is true and complete to the best of my knowledge and belief.

Signature

Printed Name

Arthur R. Brown

Position

AGENT

Company

ROBERT N. ENFIELD

Date

September 16, 1991

SURVEYOR CERTIFICATION

I hereby certify that the well location shown on this plat was plotted from field notes of actual surveys made by me or under my supervision, and that the same is true and correct to the best of my knowledge and belief.

Date Surveyed

9-11-91

Signature & Seal of
Professional Surveyor

Certificate No.

JOHN W. WEST,

676

RONALD J. EIDSON,

3239

SUPPLEMENTAL DRILLING DATA

ROBERT N. ENFIELD

HUDSON FEDERAL WELL NO. 6

1. SURFACE FORMATION: Quaternary.

2. ESTIMATED TOPS OF GEOLOGIC MARKERS:

Anhydrite	1350'
Top Salt	1500'
Base Salt	2800'
Top Yates	3050'
Top 7-Rivers	3500'
Top Queen	4200'

3. ANTICIPATED POSSIBLE HYDROCARBON BEARING ZONES:

Queen	Oil
-------	-----

4. PROPOSED CASING AND CEMENTING PROGRAM:

8-5/8" 24# K-55 STC casing to be set at 400 feet in 12-1/4" hole.
Casing to be cemented with 200 sacks of Class "C" with 2% CaCl.
Cement to circulate.

4-1/2" 9.5# K-55 STC casing to be set at total depth in 7-7/8" hole.
Casing to be cemented with 300 sacks of Class "C". Cement to fill
600 feet above top of Queen.

5. PRESSURE CONTROL EQUIPMENT:

Blowout prevention equipment, while drilling below the 8-5/8" casing seat, will be a 3000 psi working pressure stack. A BOP sketch is attached.

6. CIRCULATING MEDIUM:

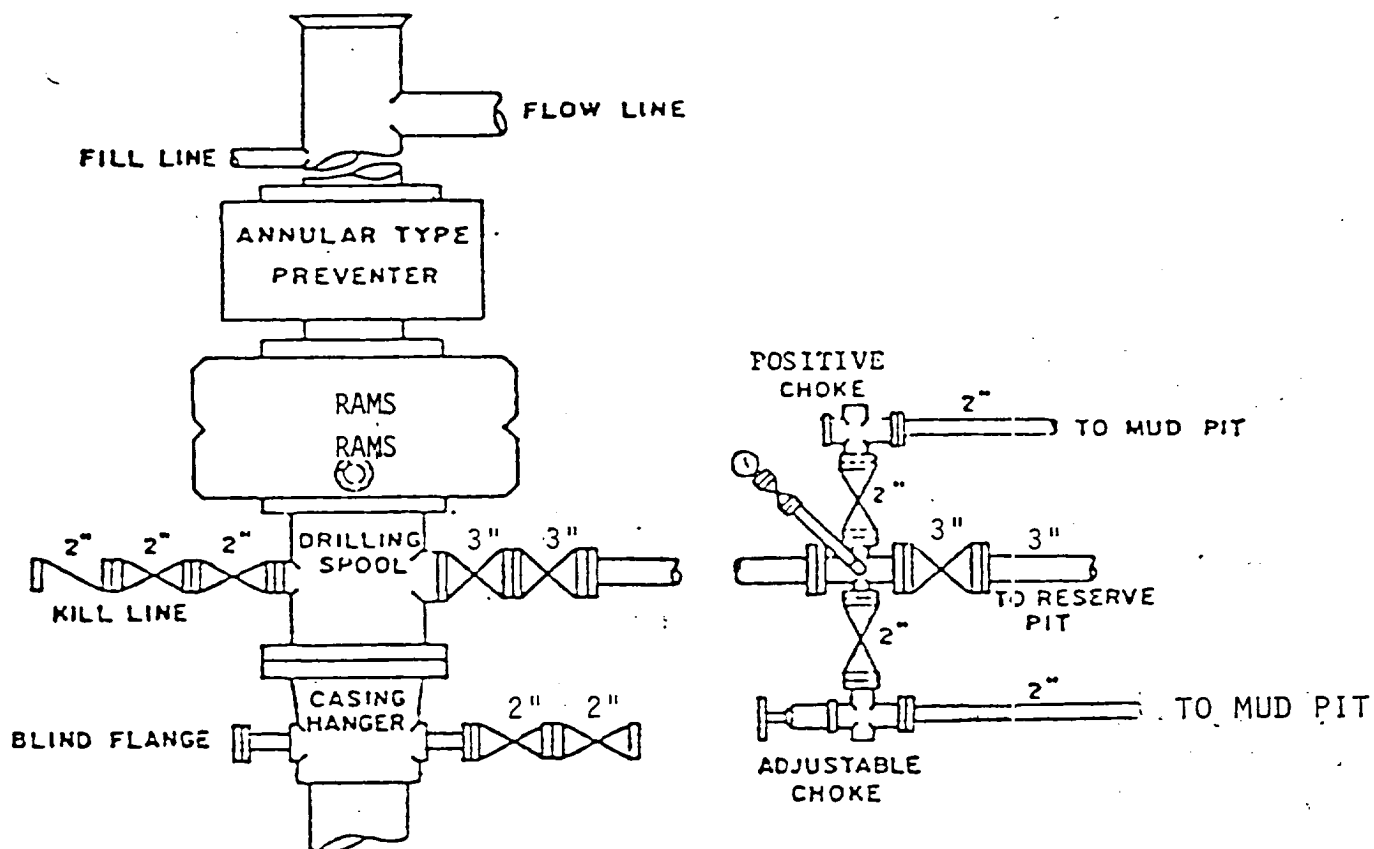
Surface to 400 feet: Fresh water spud mud. Viscosity 30 to 36 as required for hole cleaning.

400 feet to total depth: Water base drilling fluid conditioned as necessary for control of viscosity, pH, and water loss. Weight 9.4 to 10. Viscosity 38 to 45. pH 9 to 10. Filtrate 6 to 15.

RECEIVED

OCT 02 1991

CA 15
HONOLULU OFFICE



BOP STACK

3000 PSI WORKING PRESSURE

BOP ARRANGEMENT

11-5-11
11-5-11
11-5-11

OUT 12 1991
CUT
HOLD OFF