

District I
1625 N. French Dr., Hobbs, NM 88240
District II
811 S. 1st Street, Artesia, NM 88210
District III
1000 Rio Brazos Rd., Aztec, NM 87410
District IV
2040 South Pacheco, Santa Fe, NM 87505

State of New Mexico
Energy, Minerals & Natural Resources

Form C-101
Revised March 17, 1999

Oil Conservation Division
2040 South Pacheco
Santa Fe, NM 87505

Submit to appropriate District Office
State Lease - 6 Copies
Fee Lease - 5 Copies

☐ AMENDED REPORT

APPLICATION FOR PERMIT TO DRILL, RE-ENTER, DEEPEN, PLUGBACK, OR ADD A ZONE

¹ Operator Name and Address PHILLIPS PETROLEUM COMPANY 4001 PENBROOK STREET, ODESSA, TX 79762		² OGRID Number 017643
⁴ Property Code 009112	⁵ Property Name LEAMEX	³ API Number 30- 025- 35574
		⁶ Well No. 624

⁷ Surface Location									
UL or lot no.	Section	Township	Range	Lot. Idn	Feet from the	North/South Line	Feet from the	East/West line	County
I	23	17-S	33-E		1980	SOUTH	660	EAST	LEA

⁸ Proposed Bottom Hole Location If Different From Surface									
UL or lot no.	Section	Township	Range	Lot. Idn	Feet from the	North/South Line	Feet from the	East/West line	County

⁹ Proposed Pool 1 MALJAMAR (GRAYBURG-SAN ANDRES)	¹⁰ Proposed Pool 2
--	-------------------------------

¹¹ Work Type Code N	¹² Well Type Code I	¹³ Cable/Rotary R	¹⁴ Lease Type Code S B-2118	¹⁵ Ground Level Elevation 4124'
¹⁶ Multiple NO	¹⁷ Proposed Depth 4,750'	¹⁸ Formation GRAYBURG/SA	¹⁹ Contractor PATTERSON DRLG.	²⁰ Spud Date T.B.D.

²¹ Proposed Casing and Cement Program					
Hole Size	Casing Size	Casing weight/foot	Setting Depth	Sacks of Cement	Estimated TOC
12-1/4"	8-5/8"	24#, J-55	1600'	745 SX	SURFACE
7-7/8"	5-1/2"	15.5#, J-55	4750'	1100 SX	SURFACE

²² Describe the proposed program. If this application is to DEEPEN or PLUG BACK, give the data on the present productive zone and proposed new productive zone. Describe the blowout prevention program, if any. Use additional sheets if necessary.

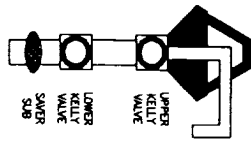
BOP schematic attached

APPROVAL for drilling ONLY -- CANNOT Inject until injection order is approved in Santa Fe.

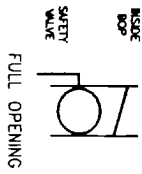
Permit Expires 1 Year From Approval Date Unless Drilling Underway

²³ I hereby certify that the information given above is true and complete to the best of my knowledge and belief.		OIL CONSERVATION DIVISION	
Signature: <i>L. M. Sanders</i>		Approved by: ORIGINAL SIGNED BY JAMES WILLIAMS	
Printed name: L. M. SANDERS		DISTRICT I SUPERVISOR	
Title: SUPERVISOR, REGULATION/PRORATION		Title:	
Date: 03/29/01	Phone: 915/368-1488	Approval Date: JUN 12 2001	Expiration Date:
		Conditions of Approval:	
		Attached <input type="checkbox"/>	

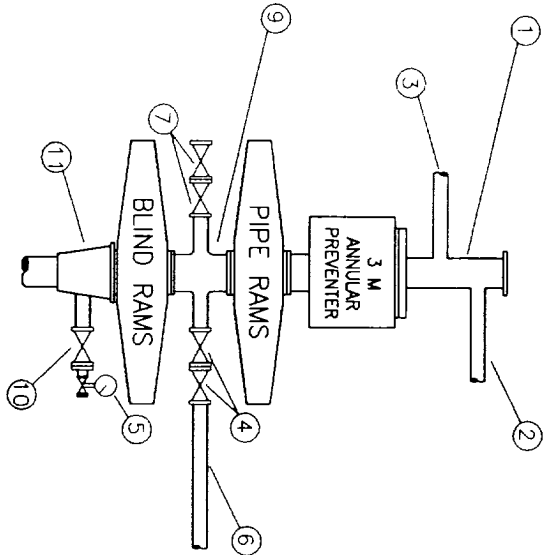
DRILLSTRING CONTROL DEVICES



ON DRILL FLOOR



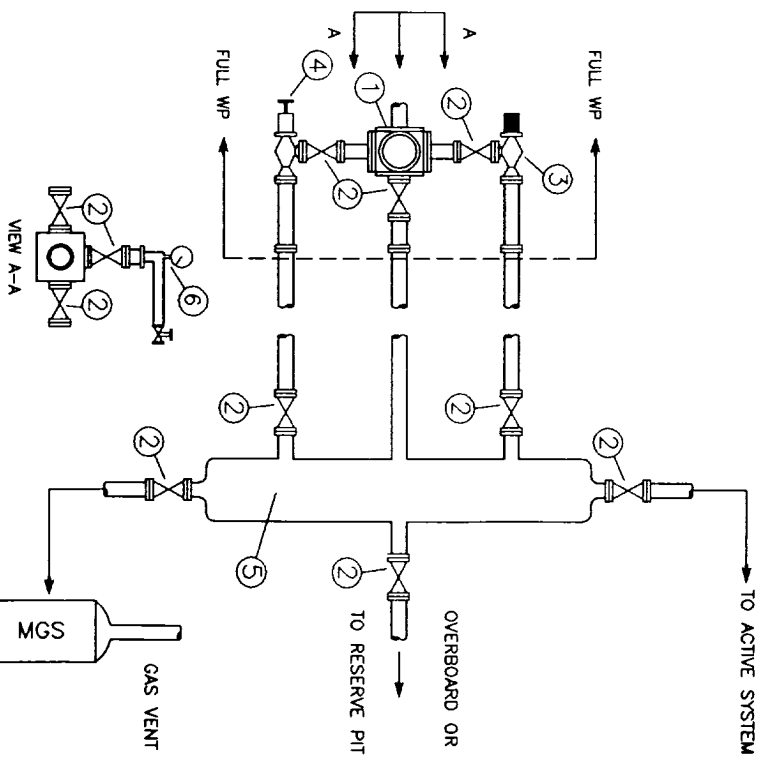
BOP STACK



- 1 BELL NIPPLE
- 2 FLOW LINE
- 3 FULL-UP LINE
- 4 3" FE PRESSURE-OPERATED CHOKE LINE VALVE
- 5 PRESSURE GAUGE
- 6 3" CHOKE LINE TO CHOKE MANIFOLD
- 7 3" FE GATE OR PLUG VALVES
- 8 2" KILL LINE
- 9 DRILLING SPOOL
- 10 2" SE OR FE GATE VALVE WITH NEEDLE VALVE
- 11 CASING HEAD HOUSING

CHOKE MANIFOLD

DISCHARGE MANIFOLD OPTIONAL FOR LAND RIGS



- 1 CROSS
- 2 GATE OR PLUG VALVE
- 3 CHOKE (ADJUSTABLE ONLY)
- 4 MANUAL ADJUSTABLE CHOKE
- 5 BUFFER CHAMBER/DISCHARGE MANIFOLD
- 6 NEEDLE VALVE AND PRESSURE GAUGE

DISTRICT I
1000 N. French Dr., Hobbs, NM 88240

DISTRICT II
P.O. Drawer 10, Artesia, NM 88211-0710

DISTRICT III
1000 Rio Grande Rd., Aztec, NM 87410

DISTRICT IV
2040 South Pacheco, Santa Fe, NM 87505

State of New Mexico
Energy, Minerals & Natural Resources Department

Form C-102
Revised August 15, 2000
Submit to Appropriate District Office
State Lease - 4 Copies
Fee Lease - 3 Copies

OIL CONSERVATION DIVISION
2040 South Pacheco
Santa Fe, NM 87505

☐ AMENDED REPORT

WELL LOCATION AND ACREAGE DEDICATION PLAT

API Number 30-025- 35574	Pool Code 43329	Pool Name Maljamar (Grayburg-San Andres)
Property Code 009112	Property Name LEAMEX	Well Number 62W
OGRID No. 017643	Operator Name PHILLIPS PETROLEUM COMPANY	Elevation 4124

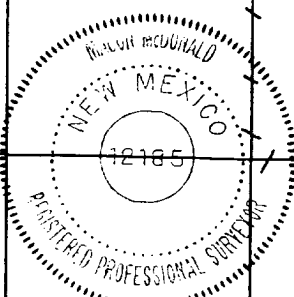

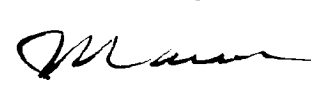
Surface Location

UL or lot No.	Section	Township	Range	Lot 1/4	Feet from the	North/South line	Feet from the	East/West line	County
1	23	17 S	33 E		1980	SOUTH	660	EAST	LEA

Bottom Hole Location If Different From Surface

UL or lot No.	Section	Township	Range	Lot 1/4	Feet from the	North/South line	Feet from the	East/West line	County
Dedicated Acres 40	Joint or Infill	Consolidation Code	Order No.						

NO ALLOWABLE WILL BE ASSIGNED TO THIS COMPLETION UNTIL ALL INTERESTS HAVE BEEN CONSOLIDATED OR A NON-STANDARD UNIT HAS BEEN APPROVED BY THE DIVISION

	OPERATOR CERTIFICATION <i>I hereby certify that the information contained herein is true and complete to the best of my knowledge and belief.</i>  Signature L. M. Sanders Printed Name Supv., Regulation/ Title Proration March 29, 2001 Date	
	SURVEYOR CERTIFICATION <i>I hereby certify that the well location shown on this plat was plotted from field notes of actual surveys made by me or under my supervision and that the same is true and correct to the best of my belief.</i> March 15, 2001 Date Surveyed Signature & Seal of Professional Surveyor  W.O. Num. 2001-0332-S Certificate No. MACON McDONALD 12185	