

District I  
1625 N. French Dr., Hobbs, NM 88240  
District II  
811 S. 1st Street, Artesia, NM 88210  
District III  
1000 Rio Brazos Rd., Aztec, NM 87410  
District IV  
2040 South Pacheco, Santa Fe, NM 87505

Oil Conservation Division  
2040 South Pacheco  
Santa Fe, NM 87505

Submit to appropriate District Office  
State Lease - 6 Copies  
Fee Lease - 5 Copies

AMENDED REPORT

**APPLICATION FOR PERMIT TO DRILL, RE-ENTER, DEEPEN, PLUGBACK, OR ADD A ZONE**

<sup>1</sup> Operator Name and Address <b>Texaco Exploration &amp; Production</b> <b>500 N. Loraine Midland, Texas 79702</b>		<sup>2</sup> OGRID Number <b>022351</b>
		<sup>3</sup> API Number <b>30-025-35687</b>
<sup>4</sup> Property Code <b>11124</b>	<sup>5</sup> Property Name <b>VACUUM GRAYBURG SAN ANDRES UNIT</b>	<sup>6</sup> Well No. <b>211</b>

<sup>7</sup> Surface Location									
UL or lot no	Section	Township	Range	Lot. Idn	Feet from the	North-South Line	Feet from the	East/West line	County
<b>M</b>	<b>1</b>	<b>18-S</b>	<b>34-E</b>		<b>710'</b>	<b>SOUTH</b>	<b>1280'</b>	<b>WEST</b>	<b>LEA</b>

<sup>8</sup> Proposed Bottom Hole Location If Different From Surface									
UL or lot no	Section	Township	Range	Lot. Idn	Feet from the	North-South Line	Feet from the	East/West line	County

<sup>9</sup> Proposed Pool 1 <b>VACUUM GRAYBURG SAN ANDRES</b>	<sup>10</sup> Proposed Pool 2
---	-------------------------------

<sup>11</sup> Work Type Code <b>N</b>	<sup>12</sup> Well Type Code <b>O</b>	<sup>13</sup> Cable/Rotary <b>ROTARY</b>	<sup>14</sup> Lease Type Code <b>S</b>	<sup>15</sup> Ground Level Elevation <b>3995'</b>
<sup>16</sup> Multiple <b>NO</b>	<sup>17</sup> Proposed Depth <b>4800'</b>	<sup>18</sup> Formation <b>SAN ANDRES</b>	<sup>19</sup> Contractor	<sup>20</sup> Spud Date <b>9/20/01</b>

<sup>21</sup> Proposed Casing and Cement Program					
Hole Size	Casing Size	Casing weight/foot	Setting Depth	Sacks of Cement	Estimated TOC
<b>12 1/4"</b>	<b>8 5/8"</b>	<b>24#</b>	<b>1550'</b>	<b>600</b>	<b>CIRCULATE</b>
<b>7 7/8"</b>	<b>5 1/2"</b>	<b>15.5#</b>	<b>4800'</b>	<b>1000</b>	<b>CIRCULATE</b>

<sup>22</sup> Describe the proposed program. If this application is to DEEPEN or PLUG BACK, give the data on the present productive zone and proposed new productive zone. Describe the blowout prevention program, if any. Use additional sheets if necessary.

**CEMENTING PROGRAM:**  
**SURFACE CASING:** 400 sacks Class C w/4% Gel, 2% CaCl2 (13.5 PPG, 1.74 CF/S, 9.11 GW/S). F/B 200 SACKS CLASS C w/2% CaCl2 (14.8 PPG, 1.34 CF/S, 6.31 GW/S).  
**PRODUCTION CASING:** 800 sacks 35/65 Poz Class H w/6% Gel, 5% Salt, 1/4# FC (12.4 PPG, 2.14 CF/S, 11.95 GW/S). F/B 200 sacks 50/50 Poz Class H w/2% Gel, 5% Salt, 1/4# FC (14.2 PPG, 1.35 CF/S, 6.30 GW/S).

<sup>23</sup> I hereby certify that the information given above is true and complete to the best of my knowledge and belief.		<b>OIL CONSERVATION DIVISION</b>	
Signature: <i>A. Phil Ryan</i>		Approved by:	
Printed name: <b>A. Phil Ryan</b>		Title:	
Title: <b>Commission Coordinator</b>		Approval Date: <b>SEP 04 2001</b>	Expiration Date:
Date: <b>9/4/01</b>	Phone: <b>(915) 688-4606</b>	Conditions of Approval:	
		Attached <input type="checkbox"/>	

Permit Expires 1 Year From Approval Date Unless Drilling Underway

JCA

*MP*

DISTRICT I  
P. O. Box 1980, Hobbs, NM 88240

DISTRICT II  
P. O. Drawer DD, Artesia, NM 88210

DISTRICT III  
1000 Rio Brazos Rd., Aztec, NM 87410

DISTRICT IV  
P. O. Box 2088, Santa Fe, NM 87504-2088

State of New Mexico  
Energy, Minerals and Natural Resources Department

Form C-102  
Revised February 10, 1994

Instructions on back

OIL CONSERVATION DIVISION

PO Box 2088  
Santa Fe, NM 87504-2088

Submit to Appropriate District Office

State Lease-4 copies  
Fee Lease-3 copies

AMENDED REPORT

WELL LOCATION AND ACREAGE DEDICATION PLAT

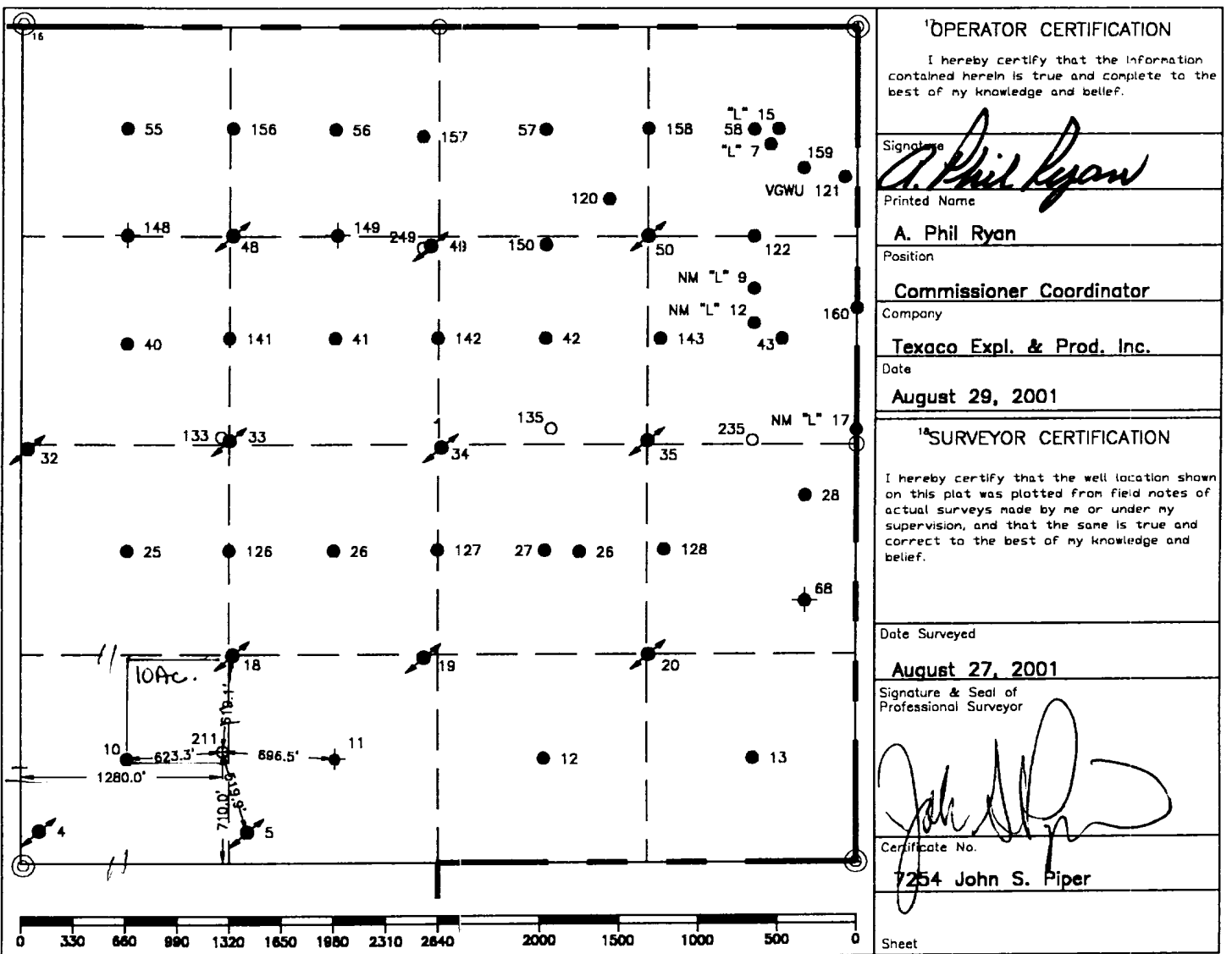
<sup>1</sup> API Number 30-025-35687		<sup>2</sup> Pool Code 62180		<sup>3</sup> Pool Name Vacuum Grayburg San Andres	
<sup>4</sup> Property Code 11124		<sup>5</sup> Property Name Vacuum Grayburg San Andres Unit			<sup>6</sup> Well Number 211
<sup>7</sup> OGRID No. 22351		<sup>8</sup> Operator Name TEXACO EXPLORATION & PRODUCTION, INC.			<sup>9</sup> Elevation 3995'

<sup>10</sup> Surface Location									
UL or lot no.	Section	Township	Range	Lot Idn	Feet from the	North/South line	Feet from the	East/West line	County
M	1	18-S	34-E		710'	South	West	1280'	Lea

<sup>11</sup> Bottom Hole Location if Different From Surface									
UL or lot no.	Section	Township	Range	Lot Idn	Feet from the	North/South line	Feet from the	East/West line	County

<sup>12</sup> Dedicated Acres 10.40	<sup>13</sup> Joint or Infill	<sup>14</sup> Consolidation Code	<sup>15</sup> Order No.
--	-------------------------------	----------------------------------	-------------------------

NO ALLOWABLE WILL BE ASSIGNED TO THIS COMPLETION UNTIL ALL INTERESTS HAVE BEEN CONSOLIDATED OR A NON-STANDARD UNIT HAS BEEN APPROVED BY THE DIVISION.



○ = Staked Location ● = Producing Well ◐ = Injection Well ◑ = Water Supply Well ⊕ = Plugged & Abandon Well  
⊙ = Found Section Corner, 2 or 3" Iron Pipe & GLO B.C. ○ = Found 1/4 Section Corner, 1" Iron Pipe & GLO B.C.

ADDITIONAL INFORMATION ON THE LOCATION

State Plane Coordinates			
Northing	645399.46 (1927=645334.55)	Easting	791845.44 (1927=750666.36)
Latitude	32°46'17.709" (1927=32°46'17.264")	Longitude 103°31'05.968" (1927=103°31'04.181")	
Zone	North American Datum	Combined Grid Factor	Coordinate File
East	1983	0.99979145	Buckeye.cr5
Drawing File	Field Book		
VGSAU211.dwg	Lea County 20, Pg. 58		

**OPERATOR CERTIFICATION**  
I hereby certify that the information contained herein is true and complete to the best of my knowledge and belief.

Signature: *A. Phil Ryan*  
Printed Name: A. Phil Ryan  
Position: Commissioner Coordinator  
Company: Texaco Expl. & Prod. Inc.  
Date: August 29, 2001

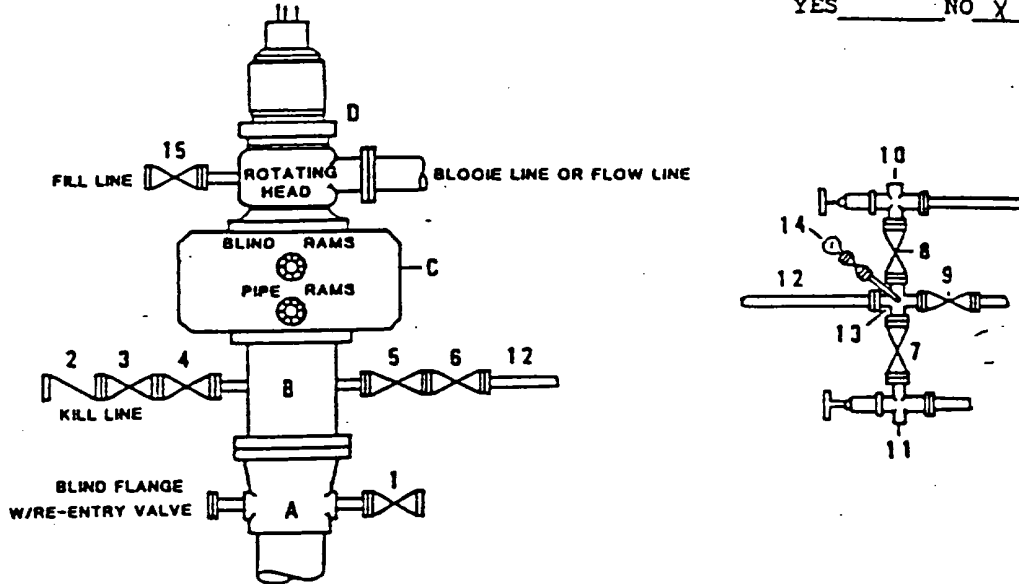
**SURVEYOR CERTIFICATION**  
I hereby certify that the well location shown on this plat was plotted from field notes of actual surveys made by me or under my supervision, and that the same is true and correct to the best of my knowledge and belief.

Date Surveyed: August 27, 2001  
Signature & Seal of Professional Surveyor: *John S. Piper*  
Certificate No.: 7254 John S. Piper

Sheet

**DRILLING CONTROL  
CONDITION II-B 3000 WP  
FOR AIR DRILLING OR  
WHERE NITROGEN OR AIR BLOWS ARE EXPECTED**

H<sub>2</sub>S TRIM REQUIRED  
YES \_\_\_\_\_ NO X



DRILLING CONTROL

MATERIAL LIST - CONDITION II - B

- A Texaco Wellhead
- B 3000# W.P. drilling spool with a 2" minimum flanged outlet for kill line and 3" minimum flanged outlet for choke line.
- C 3000# W.P. Dual ram type preventer, hydraulic operated with 1" steel, 3000# W.P. control lines (where sub-structure height is adequate, 2 - 3000# W.P. single ram type preventers may be utilized).
- D Rotating Head with fill up outlet and extended Blooie Line.
- 1,3,4,7,8 2" minimum 3000# W.P. flanged full opening steel gate valve, or Halliburton Lo Torc Plug valve.
- 2 2" minimum 3000# W.P. back pressure valve.
- 5,6,9 3" minimum 3000# W.P. flanged full opening steel gate valve, or Halliburton Lo Torc Plug valve.
- 12 3" minimum schedule 80, Grade "B", seamless line pipe.
- 13 2" minimum x 3" minimum 3000# W.P. flanged cross.
- 10,11 2" minimum 3000# W.P. adjustable choke bodies.
- 14 Cameron Mud Gauge or equivalent ( location optional in choke line).
- 15 2" minimum 3000# W.P. flanged or threaded full opening steel gate valve, or Halliburton Lo Torc Plug valve.



TEXACO, INC.  
MIDLAND DIVISION  
MIDLAND, TEXAS



SCALE	DATE	EST. NO.	DRG. NO.
DRAWN BY			
CHECKED BY			
APPROVED BY			

EXHIBIT C

ELF 2/19/01  
ABOVE DATE DOES NOT  
INDICATE WHEN  
CONFIDENTIAL LOGS  
WILL BE RELEASED

2/19/01