

10. OF COPIES RECEIVED	
DISTRIBUTION	
SANTA FE	
FILE	
U.S.G.S.	
LAND OFFICE	
OPERATOR	

NEW MEXICO OIL CONSERVATION COMMISSION

Form C-101
Revised 1-1-65

14. Indicate Type of Lease
STATE FEE

15. State Oil & Gas Lease No.

7. Unit Agreement Name

8. Farm or Lease Name
Central Vacuum Unit

9. Well No.
41

10. Field and Pool, or Wildcat
Vacuum Grayburg-S.A.

11. County
Lea

APPLICATION FOR PERMIT TO DRILL, DEEPEN, OR PLUG BACK

1a. Type of Work

b. Type of Well
OIL WELL GAS WELL OTHER Water Injection

DRILL DEEPEN PLUG BACK

SINGLE ZONE MULTIPLE ZONE

2. Name of Operator
Texaco Inc.

3. Address of Operator
P. O. Box 3109 Midland, Texas 79702

4. Location of Well
UNIT LETTER C LOCATED 60' FEET FROM THE North LINE
AND 2552 FEET FROM THE West LINE OF SEC. 36 TWP. 17-S R. 34-E

12. Rotary or Casing
4800' Grayburg-S.A. Rotary

13. Approx. Date Work will start
11-8-77

21. Elevations (Show whether DT, RT, etc.)
4001' GR

21A. Kind & Status Plug. Back

21B. Halliburton Material

23. PROPOSED CASING AND CEMENT PROGRAM

SIZE OF HOLE	SIZE OF CASING	WEIGHT PER FOOT	SETTING DEPTH	SACKS OF CEMENT	EST. TOP
11"	8 5/8"	24#/K-55 STC	350'	200 sx	Circulate
7 7/8"	4 1/2"	10.5#/K-55STC	4800'	2800 sx	Circulate

Surface Casing: 200 sx class "C" w/2% Cacl, 14.8#/gal < 300% to circulate- cement must circulate

Production Casing: Cement first stage w/250 sx Halliburton Lite w/5#/sx Gilsonite & 8#/sx salt followed by 500 sx class "C" cement with 8#/sx salt & 1/2% CFR-2: open DV tool @ 2500' circulate 4-6 hrs. Second stage 1800 sx Halliburton Lite w/18% salt + 250 sx class "C" cement w/18% salt.

IN ABOVE SPACE DESCRIBE PROPOSED PROGRAM: IF PROPOSAL IS TO DEEPEN OR PLUG BACK, GIVE DATA ON PRESENT PRODUCTIVE ZONE AND PROPOSED NEW PRODUCTIVE ZONE. GIVE BLOWOUT PREVENTER PROGRAM, IF ANY.

I hereby certify that the information above is true and complete to the best of my knowledge and belief.

Signed [Signature] Title Assistant Div. Petr. Engr. Date 10-31-77

(This space for State Use)

SUPERVISOR DISTRICT I

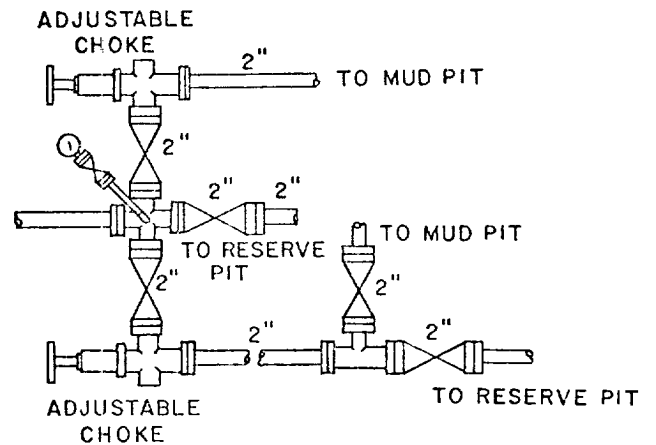
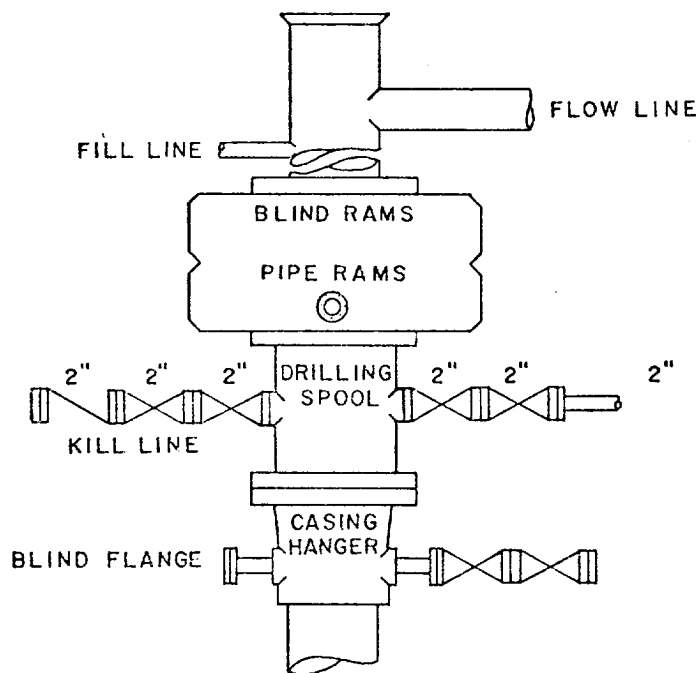
JAN 1978

APPROVED BY [Signature] TITLE _____ DATE _____
CONDITIONS OF APPROVAL, IF ANY:

RECEIVED

1977

CONSERVATION COMM,
DOBBS, N. M.



SCALE: NONE	DATE	EST. NO.	DRG. NO.
DRAWN BY JWD			
CHECKED BY RDW			
APPROVED BY			



TEXACO, INC.
 PRODUCING DEPARTMENT-U.S. (EAST)
 MIDLAND, TEXAS



EXHIBIT "B"

NEW MEXICO OIL CONSERVATION COMMISSION.
WELL LOCATION AND ACREAGE DEDICATION PLAT

Form C-102
Supersedes C-128
Effective 1-1-65

All distances must be from the outer boundaries of the Section.

Operator Texaco Inc.		Lease Central Vacuum Unit			Well No. 47
Unit Letter C	Section 36	Township T-17-S	Range R-34-E	County Lea	

Actual Footage Location of Well:

60 feet from the **North** line and **2552** feet from the **West** line **Sec. 36**

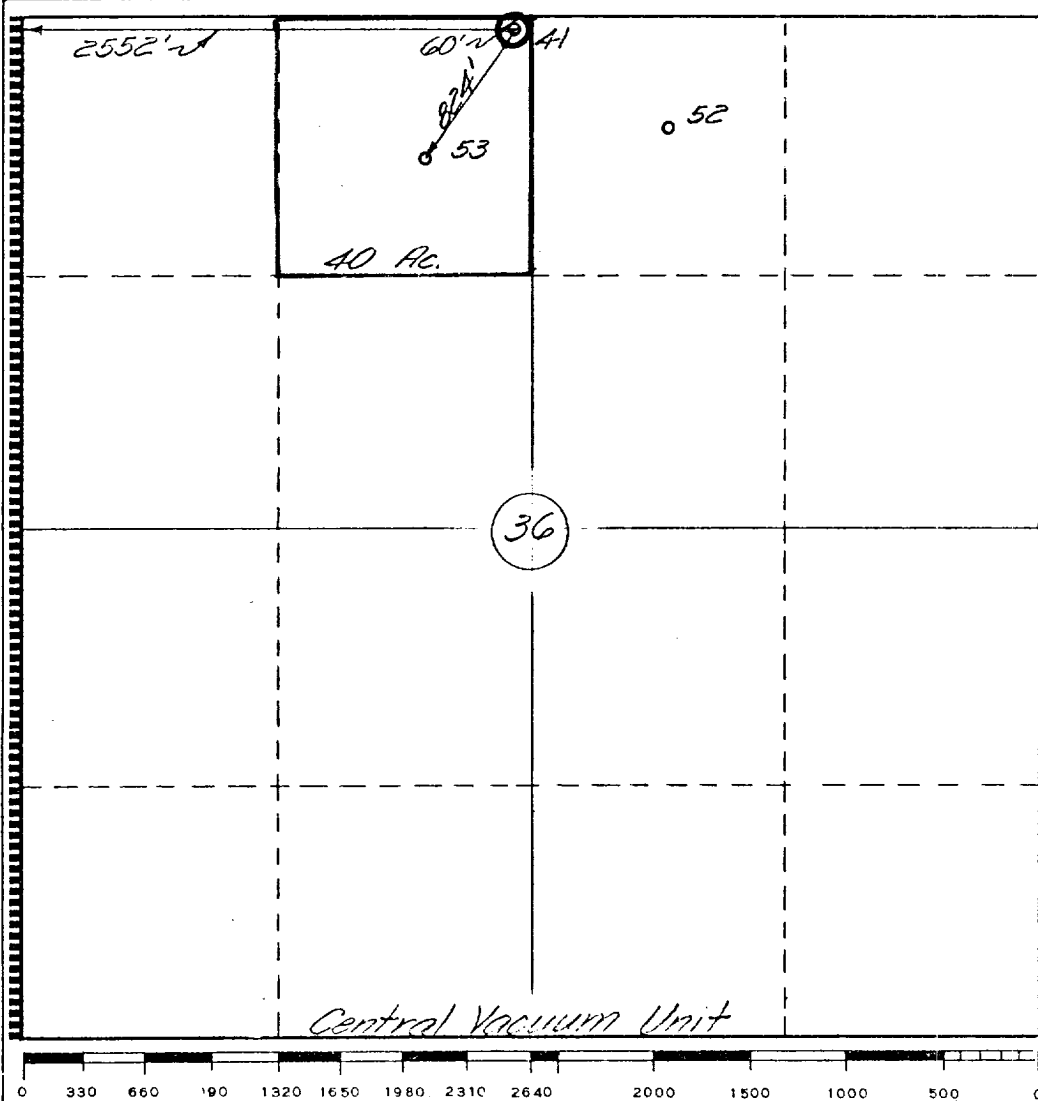
Ground Level Elev. 4001'	Producing Formation Grayburg San Andres	Pool Vacuum Grayburg- San Andres	Dedicated Acreage: 40 Acres
------------------------------------	---	--	---------------------------------------

1. Outline the acreage dedicated to the subject well by colored pencil or hachure marks on the plat below.
2. If more than one lease is dedicated to the well, outline each and identify the ownership thereof (both as to working interest and royalty).
3. If more than one lease of different ownership is dedicated to the well, have the interests of all owners been consolidated by communitization, unitization, force-pooling, etc?

Yes No If answer is "yes," type of consolidation _____

If answer is "no," list the owners and tract descriptions which have actually been consolidated. (Use reverse side of this form if necessary.) _____

No allowable will be assigned to the well until all interests have been consolidated (by communitization, unitization, forced-pooling, or otherwise) or until a non-standard unit, eliminating such interests, has been approved by the Commission.



CERTIFICATION

I hereby certify that the information contained herein is true and complete to the best of my knowledge and belief.

Name
B. L. Eiland

Position
Division Surveyor

Company
Texaco Inc.

Date
10-31-77

I hereby certify that the well location shown on this plat was plotted from field notes of actual surveys made by me or under my supervision, and that the same is true and correct to the best of my knowledge and belief.

Date Surveyed
10-18-77

Registered Professional Engineer and/or Land Surveyor
B. L. Eiland

Certificate No.
4386

RECEIVED

7 1977

FEDERAL COMMUNICATIONS COMM.
WASHINGTON, D. C.