

MEXICO OIL CONSERVATION COMMISSION
WELL LOCATION AND ACREAGE DEDICATION PLAT

Form C-102
Supersedes C-128
Effective 1-1-65

All distances must be from the outer boundaries of the Section.

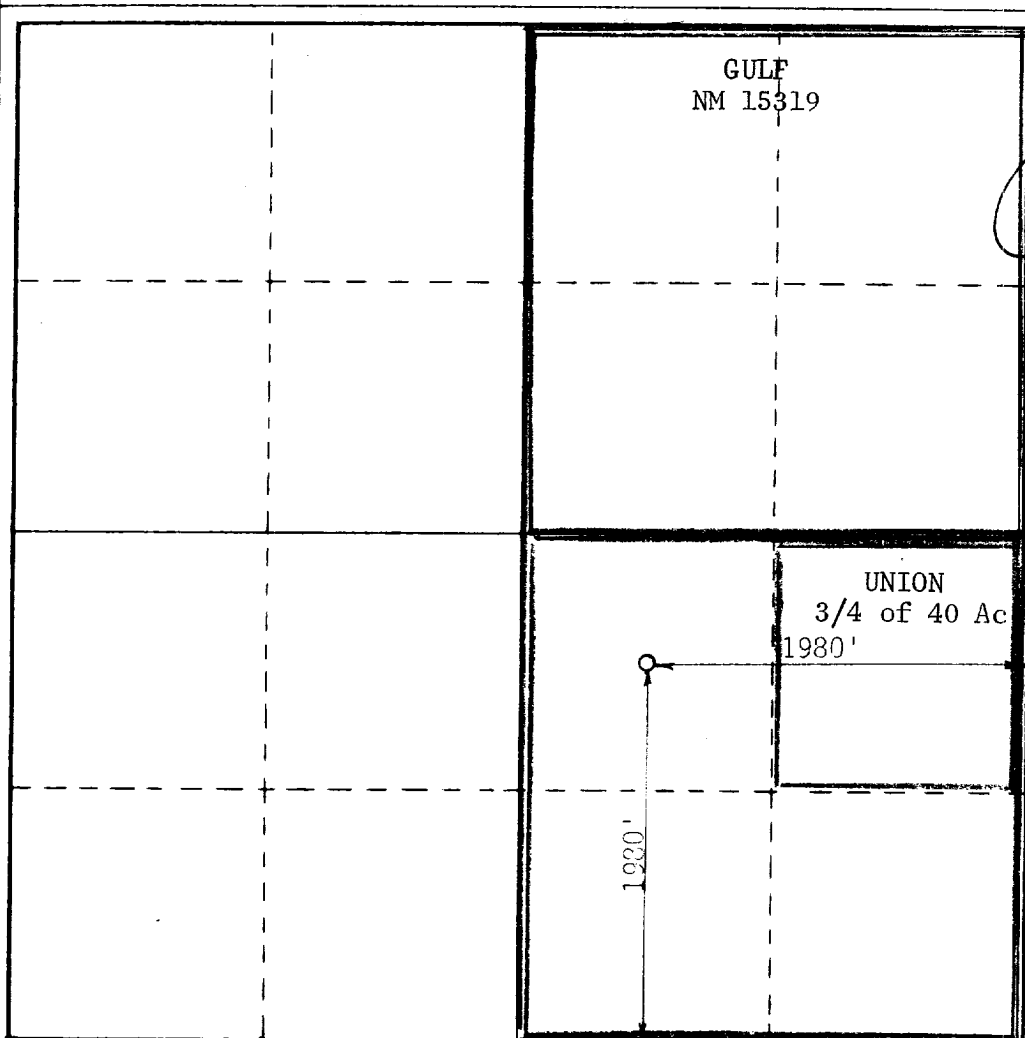
Operator UNION OIL OF CALIFORNIA			Lease SMITH		Well No. 1
Tract Letter J	Section 25	Township 19 SOUTH	Range 33 EAST	County LEA	
Actual Footage Location of Well: 1980 feet from the SOUTH line and 1980 feet from the EAST line					
Ground Level Elev. 3,620.5'	Producing Formation Morrow		Pool (East Gem Morrow) Undesignated	Dedicated Acreage: 320 Acres	

1. Outline the acreage dedicated to the subject well by colored pencil or hachure marks on the plat below.
2. If more than one lease is dedicated to the well, outline each and identify the ownership thereof (both as to working interest and royalty).
3. If more than one lease of different ownership is dedicated to the well, have the interests of all owners been consolidated by communitization, unitization, force-pooling, etc? 1/4 of 40 Ac. presently released.

Yes No If answer is "yes," type of consolidation Communitization and force-pooling in progress.

If answer is "no," list the owners and tract descriptions which have actually been consolidated (Use reverse side of this form if necessary.) _____

No allowable will be assigned to the well until all interests have been consolidated (by communitization, unitization, forced-pooling, or otherwise) or until a non-standard unit, eliminating such interests, has been approved by the Commission.



CERTIFICATION

I hereby certify that the information contained herein is true and complete to the best of my knowledge and belief.

J.R. Hughes
Name J.R. Hughes

District Drilling Supt.

Position
Union Oil Co. of California

Company
January 7, 1982

Date

I hereby certify that the well location shown on this plat was plotted from field notes of actual surveys made by me or under my supervision, and that the same is true and correct to the best of my knowledge and belief.

Date Surveyed
JANUARY 2, 1982

Registered Professional Engineer
and/or Land Surveyor

Ronald J. Bidon

Certificate No. JOHN W. WEST 676
PATRICK J. ROMERO 6863
Ronald J. Bidon 3239

