

NEW MEXICO OIL CONSERVATION COMMISSION
WELL LOCATION AND ACREAGE DEDICATION PLAT

Form C-102
Supersedes C-128
Effective 1-1-65

All distances must be from the outer boundaries of the Section

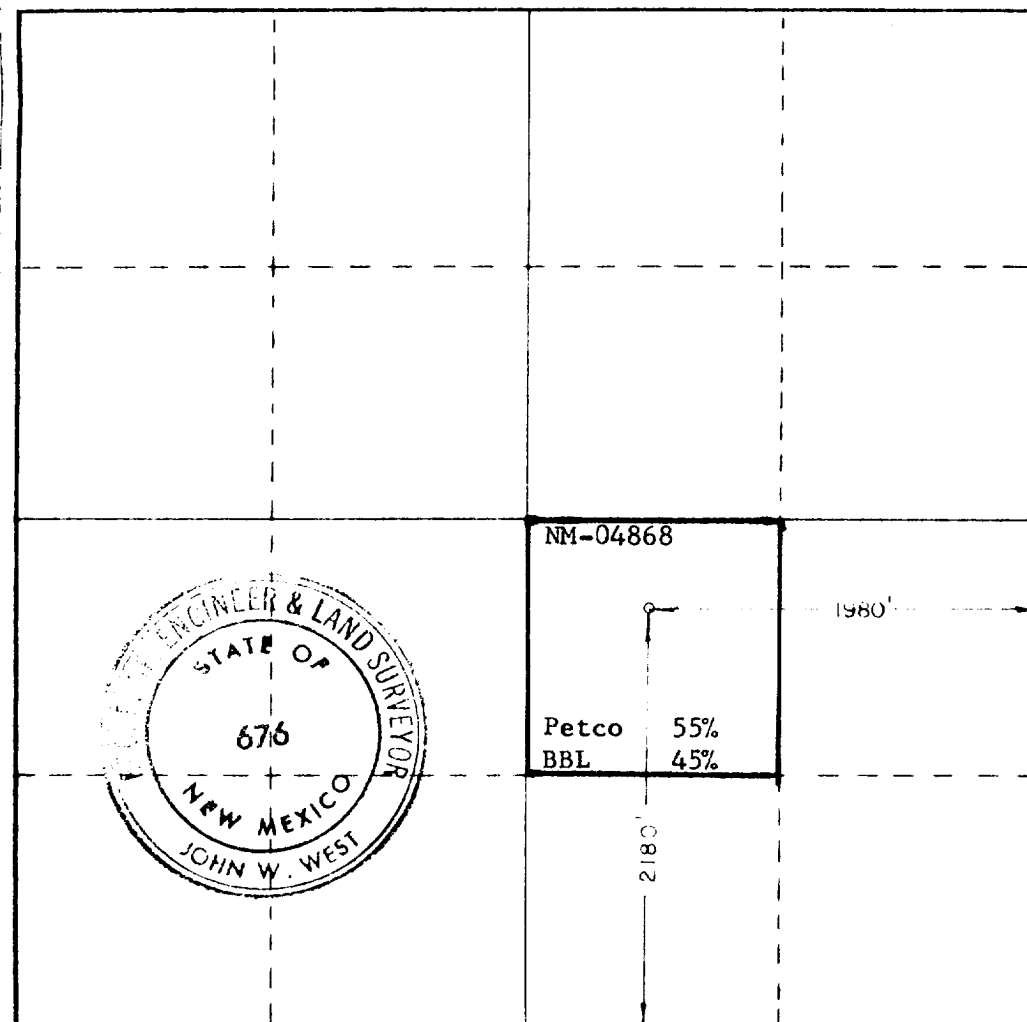
Operator Petroleum Corporation of Texas			Lease Federal J		Well No. 1
Grid Letter J	Section 22	Township 18 South	Range 32 East	County Lea County	
Actual Footage Location of Well:					
1980 feet from the East line and		2180 feet from the South line			
Ground Level Elev. 3762.9	Producing Formation Queen	Pool Querecho Plains	Dedicated Acreage: 40 Acres		

1. Outline the acreage dedicated to the subject well by colored pencil or hachure marks on the plat below.
2. If more than one lease is dedicated to the well, outline each and identify the ownership thereof (both as to working interest and royalty).
3. If more than one lease of different ownership is dedicated to the well, have the interests of all owners been consolidated by communitization, unitization, force-pooling, etc?

☐ Yes ☐ No If answer is "yes," type of consolidation _____

If answer is "no," list the owners and tract descriptions which have actually been consolidated. (Use reverse side of this form if necessary.) _____

No allowable will be assigned to the well until all interests have been consolidated (by communitization, unitization, forced-pooling, or otherwise) or until a non-standard unit, eliminating such interests, has been approved by the Commission.



CERTIFICATION

I hereby certify that the information contained herein is true and complete to the best of my knowledge and belief.

George R. Smith
Name

George R. Smith

Position

Agent for:

Company

Petroleum Corp. of Texas

Date

January 27, 1983

I hereby certify that the well location shown on this plat was plotted from field notes of actual surveys made by me or under my supervision, and that the same is true and correct to the best of my knowledge and belief.

Date Surveyed

January 19, 1983

Registered Professional Engineer
and/or Land Surveyor

John W. West

Certificate No.

JOHN W. WEST NO. 676

0 500 1000 1500 2000 2500 3000 3500 4000 4500 5000 5500 6000 6500 7000 7500 8000 8500 9000 9500 10000



RECEIVED
FEB 7 1983
O.C.D.
HOBBS OFFICE