

30-025-29383

NO. OF COPIES RECEIVED	
DISTRIBUTION	
SANTA FE	
FILE	
U.S.G.S.	
LAND OFFICE	
OPERATOR	

NEW MEXICO OIL CONSERVATION COMMISSION

Form C-101
Revised 1-1-65

5A. Indicate Type of Lease	
STATE <input checked="" type="checkbox"/>	FEE <input type="checkbox"/>
5. State Oil & Gas Lease No.	
B-161	

APPLICATION FOR PERMIT TO DRILL, DEEPEN, OR PLUG BACK

1a. Type of Work		7. Unit Agreement Name	
b. Type of Well OIL WELL <input checked="" type="checkbox"/> GAS WELL <input type="checkbox"/> OTHER <input type="checkbox"/> DRILL <input type="checkbox"/> DEEPEN <input type="checkbox"/> PLUG BACK <input type="checkbox"/> SINGLE ZONE <input type="checkbox"/> MULTIPLE ZONE <input type="checkbox"/>		8. Farm or Lease Name North Vacuum Abo East Unit	
2. Name of Operator Mobil Producing Tx. & N.M. Inc.		9. Well No. 12	
3. Address of Operator P.O. Box 633, Midland, Tx. 79702 L.L. Maroney		10. Field and Pool, or Wildcat Vacuum North-Abo	
4. Location of Well UNIT LETTER E LOCATED 660 FEET FROM THE West LINE AND 2000 FEET FROM THE North LINE OF SEC. 18 TWP. 17S RGE. 35E NMPM		12. County Lea	
19. Proposed Depth 9000'		19A. Formation Abo	20. Rotary or C.T. Rotary
21. Elevations (Show whether DF, RT, etc.) 4012 GR	21A. Kind & Status Plug. Bond Active Blanket	21B. Drilling Contractor Unknown	22. Approx. Date Work will start Sept. 1, 1985

23.

PROPOSED CASING AND CEMENT PROGRAM

SIZE OF HOLE	SIZE OF CASING	WEIGHT PER FOOT	SETTING DEPTH	SACKS OF CEMENT	EST. TOP
17-1/2"	13-3/8"	48#	400'	Well Circ to Surface	
12-1/4"	8-5/8"	28 & 32#	0-5000'	Well Circ to Surface	
7-7/8"	5-1/2"	15.5 & 17#	0- TD	Well Circ to Surface	

BOP Sketch Attached

Permit Expires 6 Months From Approval
Date Unless Drilling Underway.

IN ABOVE SPACE DESCRIBE PROPOSED PROGRAM: IF PROPOSAL IS TO DEEPEN OR PLUG BACK, GIVE DATA ON PRESENT PRODUCTIVE ZONE AND PROPOSED NEW PRODUCTIVE ZONE. GIVE BLOWOUT PREVENTER PROGRAM, IF ANY.

I hereby certify that the information above is true and complete to the best of my knowledge and belief.

Signed G.E. Tate G.E. Tate Title Env. & Reg. Mgr. Date August 23, 1985

(This space for State Use)

ORIGINAL SIGNED BY JERRY SEXTON

APPROVED BY DISTRICT I SUPERVISOR TITLE DATE

CONDITIONS OF APPROVAL, IF ANY:

AUG 28 1985

RECEIVED

AUG 26 1985

U.S. DEPT. OF JUSTICE
HUMAN RIGHTS DIVISION

All distances must be from the outer boundaries of the Section.

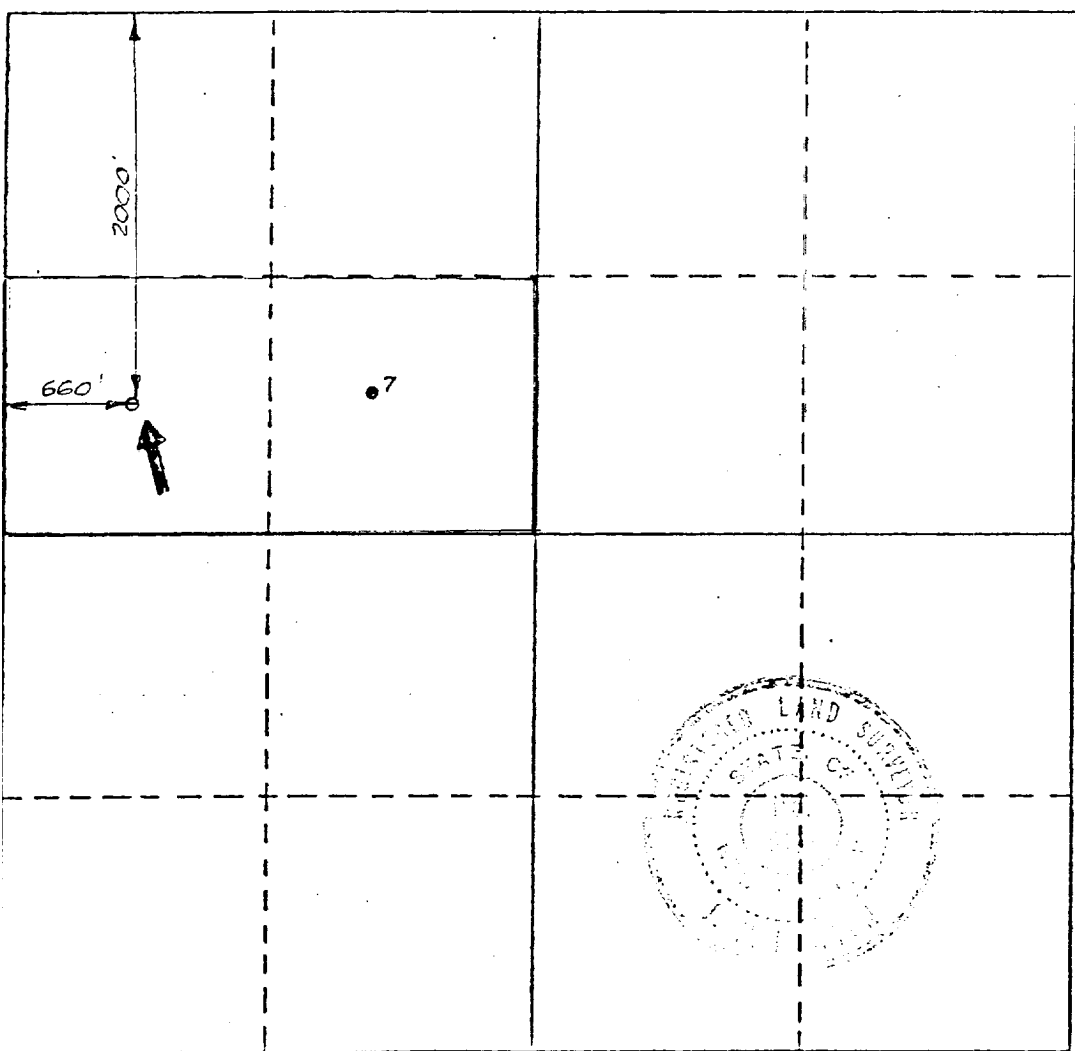
Operator Mobil Producing Tx. & N.M. Inc.		Lease North Vacuum Abo East Unit		Well No. 12
Unit Letter 6	Section 18	Township 17-S	Range 35-E	County Lea
Actual Footage Location of Well: 660 feet from the West line and 2000 feet from the North line				
Ground Level Elev. 4012	Producing Formation Abo	Pool Vacuum, North	Dedicated Acreage: 2 wells 80 Acres	

1. Outline the acreage dedicated to the subject well by colored pencil or hachure marks on the plat below.
2. If more than one lease is dedicated to the well, outline each and identify the ownership thereof (both as to working interest and royalty).
3. If more than one lease of different ownership is dedicated to the well, have the interests of all owners been consolidated by communitization, unitization, force-pooling, etc?

☐ Yes ☐ No If answer is "yes," type of consolidation _____

If answer is "no," list the owners and tract descriptions which have actually been consolidated. (Use reverse side of this form if necessary.) _____

No allowable will be assigned to the well until all interests have been consolidated (by communitization, unitization, forced-pooling, or otherwise) or until a non-standard unit, eliminating such interests, has been approved by the Division.



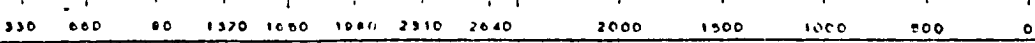
CERTIFICATION

I hereby certify that the information contained herein is true and complete to the best of my knowledge and belief.

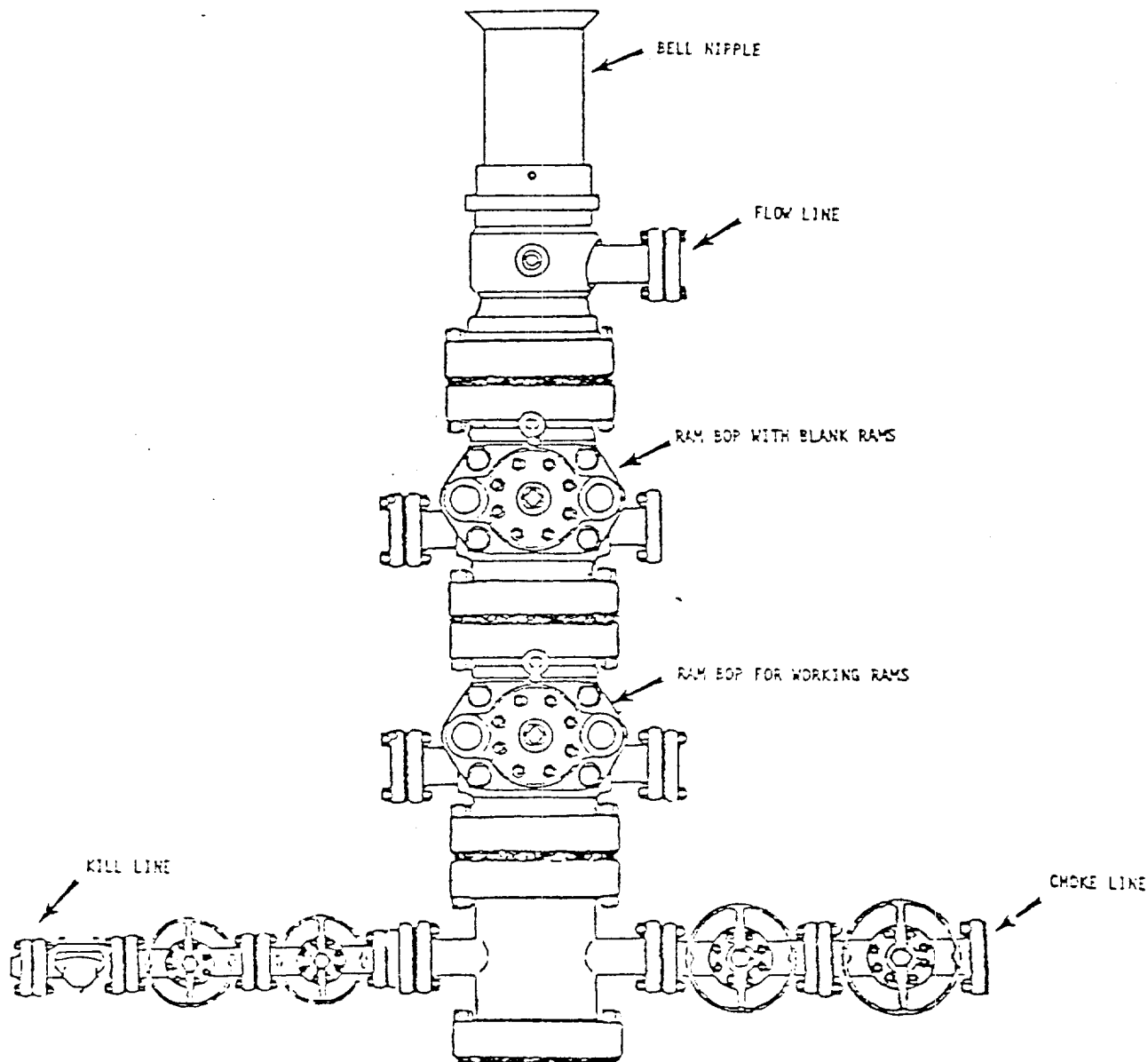
Signature	G.E. Tate
Name	G.E. Tate
Position	Env. & Reg. Mgr.
Company	Mobil Producing Tx. & N.M. Inc.
Date	August 8, 1985

I hereby certify that the well location shown on this plat was plotted from field notes of actual surveys made by me or under my supervision, and that the same is true and correct to the best of my knowledge and belief.

Date Surveyed	August 8, 1985
Registered Professional Engineer and/or Land Surveyor	J. N. Newton
Certificate No.	5109



REC'D
AUG 26 1985
G. S. S.
HOUSE OFFICE



BOP rams will be actuated on each trip of drill pipe and will be tested before drilling the plug on each casing string.

NOTE: ALL VALVES ARE METAL-TO-METAL SEAL AND FLANGED. ALL COMPONENTS MUST MEET ABOVE MINIMUM PRESSURE RATINGS. ALL COMPONENTS TO BE TESTED TO RATED PRESSURE AFTER ASSEMBLY AND BEFORE FURTHER DOWNHOLE OPERATIONS MAY BE CONDUCTED.

Mobil Producing
Texas & New Mexico Inc.
Houston, Texas

MOBIL NO. 12 North Vacuum Unit
(LEASE)
Lea COUNTY, Wm STATE

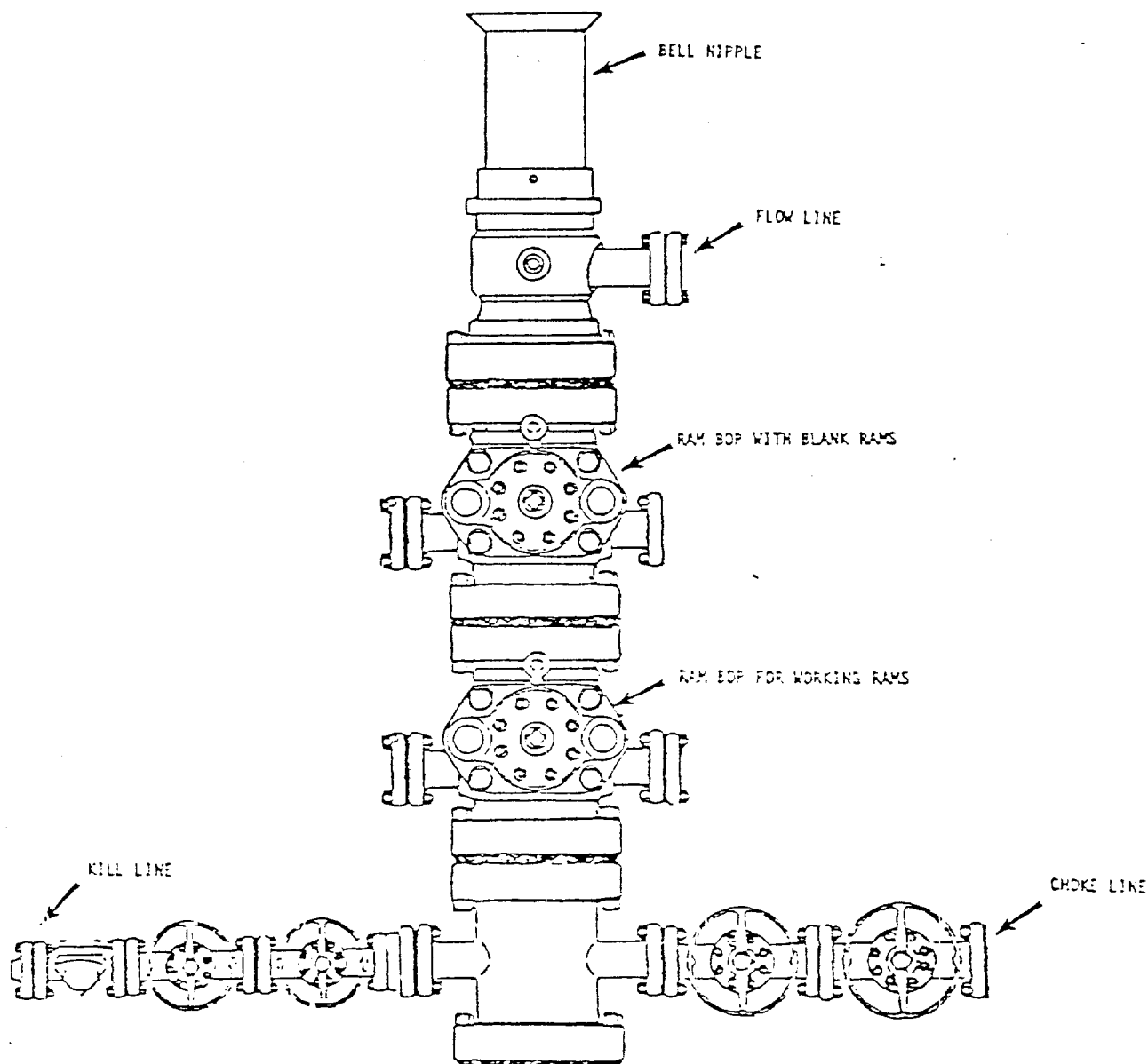
BLOWOUT PREVENTER ASSEMBLY

13 3/8 IN. 3000 PSI WP

Scale

Date
Drawn
Checked
Approved
Revised

RECEIVED
AUG 26 1985
C.I.D.
HOMES OFFICE



BOP rams will be actuated on each trip of drill pipe and will be tested before drilling the plug on each casing string.

NOTE: ALL VALVES ARE METAL-TO-METAL SEAL AND FLANGED. ALL COMPONENTS MUST MEET ABOVE MINIMUM PRESSURE RATINGS. ALL COMPONENTS TO BE TESTED TO RATED PRESSURE AFTER ASSEMBLY AND BEFORE FURTHER DOWNHOLE OPERATIONS MAY BE CONDUCTED.

Mobil Producing
Texas & New Mexico Inc.
Houston, Texas

MOBIL NO. 12 North Vassar Oil East
(LEASE)
Lea COUNTY, nm STATE

BLOWOUT PREVENTER ASSEMBLY
(8 5/8 IN. 5000 PSI WP*)

See to

Drawn
Checked
Approved
Revised

177

RECEIVED

AUG 26 1985

U.S. DEPT. OF JUSTICE
HOBBBS OFFICE