

MEXICO OIL CONSERVATION COMMISSION  
WELL LOCATION AND ACREAGE DEDICATION PLAT

Form C-102  
Supersedes C-128  
Effective 1-1-65

All distances must be from the outer boundaries of the Section

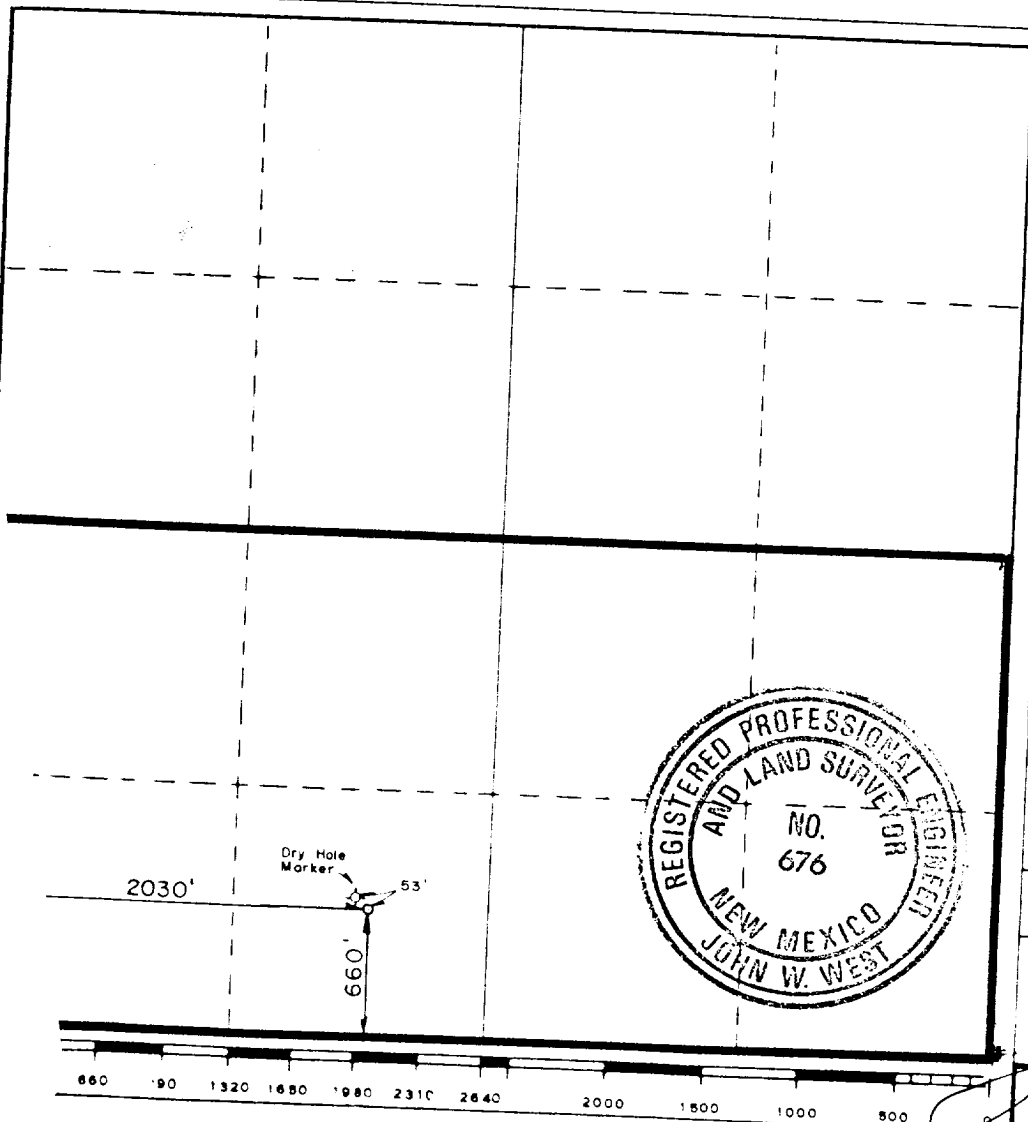
Sun Exploration and Production Company			Lease		Well No.
Unit Letter	Section	Township	Range	County	#1
N	15	17 South	35 East	Lea	
Actual Footage Location of Well:					
660 feet from the South line and		2030 feet from the West line			
Ground Level Elev.	Producing Formation	Pool	Dedicated Acreage:		
3544.9	Atoka Sand	Shoe Bar, South Atoka Gas	320 Acres		

1. Outline the acreage dedicated to the subject well by colored pencil or hachure marks on the plat below.
2. If more than one lease is dedicated to the well, outline each and identify the ownership thereof (both as to working interest and royalty).
3. If more than one lease of different ownership is dedicated to the well, have the interests of all owners been consolidated by communitization, unitization, force-pooling, etc?

☒ Yes ☐ No If answer is "yes," type of consolidation Mobil Oil Co. (HBP) Own 25%

If answer is "no," list the owners and tract descriptions which have actually been consolidated. (Use reverse side of this form if necessary.)

No allowable will be assigned to the well until all interests have been consolidated (by communitization, unitization, forced-pooling, or otherwise) or until a non-standard unit, eliminating such interests, has been approved by the Commission.



CERTIFICATION

I hereby certify that the information contained herein is true and complete to the best of my knowledge and belief.

*Maria L. Perez*  
Name  
Maria L. Perez

Position  
Accounting Associate

Company  
Sun Expl. & Prod. Co.

Date  
8-3-87

I hereby certify that the well location shown on this plat was plotted from field notes of actual surveys made by me or under my supervision, and that the same is true and correct to the best of my knowledge and belief.

Date Surveyed  
April 15, 1987

Registered Professional Engineer and/or Land Surveyor

*John W. West*  
Certificate No. JOHN W. WEST, 676  
SIDSON, 3239

Rec'd (2/14/87)

ELF