

Submit to Appropriate District Office  
 State Lease - 6 copies  
 Fee Lease - 5 copies

State of New Mexico  
 Energy, Minerals and Natural Resources Department

Form C-101  
 Revised 1-1-89

**OIL CONSERVATION DIVISION**  
 P.O. Box 2088  
 Santa Fe, New Mexico 87504-2088

DISTRICT I  
 P.O. Box 1980, Hobbs, NM 88240

DISTRICT II  
 P.O. Drawer DD, Artesia, NM 88210

DISTRICT III  
 1000 Rio Brazos Rd., Aztec, NM 87410

API NO. (assigned by OCD on New Wells)  
30-025-30969

5. Indicate Type of Lease  
 STATE  FEE

6. State Oil & Gas Lease No.  
 548570

**APPLICATION FOR PERMIT TO DRILL, DEEPEN, OR PLUG BACK**

1a. Type of Work:  
 DRILL  RE-ENTER  DEEPEN  PLUG BACK   
 b. Type of Well:  
 OIL WELL  GAS WELL  OTHER   
 SINGLE ZONE  MULTIPLE ZONE

7. Lease Name or Unit Agreement Name  
 NEW MEXICO -O- STATE NCT-1

2. Name of Operator  
 TEXACO PRODUCING INC.

8. Well No.  
 33

3. Address of Operator  
 P. O. Box 3109, Midland, Texas 79702

9. Pool name or Wildcat  
 VACUUM GLORIETA

4. Well Location  
 Unit Letter H : 2310 Feet From The NORTH Line and 990 Feet From The EAST Line  
 Section 36 Township 17-SOUTH Range 34-EAST NMPM LEA County

10. Proposed Depth 6300' 11. Formation GLORIETA 12. Rotary or C.T. ROTARY

13. Elevations (Show whether DF, RT, GR, etc.) GR-3995' 14. Kind & Status Plug. Bond BLANKET 15. Drilling Contractor BASIN 16. Approx. Date Work will start 09-15-90

17. **PROPOSED CASING AND CEMENT PROGRAM**

SIZE OF HOLE	SIZE OF CASING	WEIGHT PER FOOT	SETTING DEPTH	SACKS OF CEMENT	EST. TOP
15	11 3/4	42#	1550'	1200	SURFACE
11	8 5/8	32#	3000'	850	SURFACE
7 7/8	5 1/2	15.5#	6300'	1150	SURFACE

CEMENTING PROGRAM: CONDUCTOR - 16in, 94# SET @ 40'. CEMENTED WITH REDIMIX.  
 SURFACE CASING - 1200 SX CLASS H w/ 2% CaCl2 (15.6ppg, 1.19f3/s, 5.2gw/s).  
 INTERMEDIATE CASING - 600 SX 35/65 POZ CLASS H w/ 6% GEL & 5% SALT (12.8ppg, 1.87f3/s, 9.9gw/s). F/B 250 SX CLASS H w/ 2% CaCl2 (15.6ppg, 1.19f3/s, 5.2gw/s).  
 PRODUCTION CASING - 1st STAGE: 300 SX CLASS H w/ 1/4# FLOCELE (15.6ppg, 1.18f3/s, 5.2gw/s).  
 DV TOOL @ 5000' - 2nd STAGE: 600 SX 35/65 POZ CLASS H w/ 6% GEL, 5% SALT, 1/4# FLOCELE (12.8ppg, 1.87f3/s, 9.9gw/s). F/B 250 SX CLASS H (15.6ppg, 1.18f3/s, 5.2gw/s).

NO OTHER OPERATORS IN THIS QUARTER QUARTER SECTION.

IN ABOVE SPACE DESCRIBE PROPOSED PROGRAM: IF PROPOSAL IS TO DEEPEN OR PLUG BACK, GIVE DATA ON PRESENT PRODUCTIVE ZONE AND PROPOSED NEW PRODUCTIVE ZONE. GIVE BLOWOUT PREVENTER PROGRAM, IF ANY.

I hereby certify that the information above is true and complete to the best of my knowledge and belief.  
 SIGNATURE C. Wade Howard TITLE ENGINEERING ASSISTANT DATE 08-07-90  
 TYPE OR PRINT NAME C. W. HOWARD TELEPHONE NO. 915 688-4606

(This space for State Use)

APPROVED BY \_\_\_\_\_ TITLE \_\_\_\_\_ DATE \_\_\_\_\_

CONDITIONS OF APPROVAL, IF ANY:

Permit Expires 6 Months From Approval Date Unless Drilling Underway.

Submit to Appropriate District Office  
 State Lease - 4 copies  
 Fee Lease - 3 copies

State of New Mexico  
 Energy, Minerals and Natural Resources Department

Form C-102  
 Revised 1-1-89

OIL CONSERVATION DIVISION

P.O. Box 2088

Santa Fe, New Mexico 87504-2088

DISTRICT I  
 P.O. Box 1980, Hobbs, NM 88240

DISTRICT II  
 P.O. Drawer DD, Artesia, NM 88210

DISTRICT III  
 1000 Rio Brazos Rd., Aztec, NM 87410

WELL LOCATION AND ACREAGE DEDICATION PLAT

All Distances must be from the outer boundaries of the section

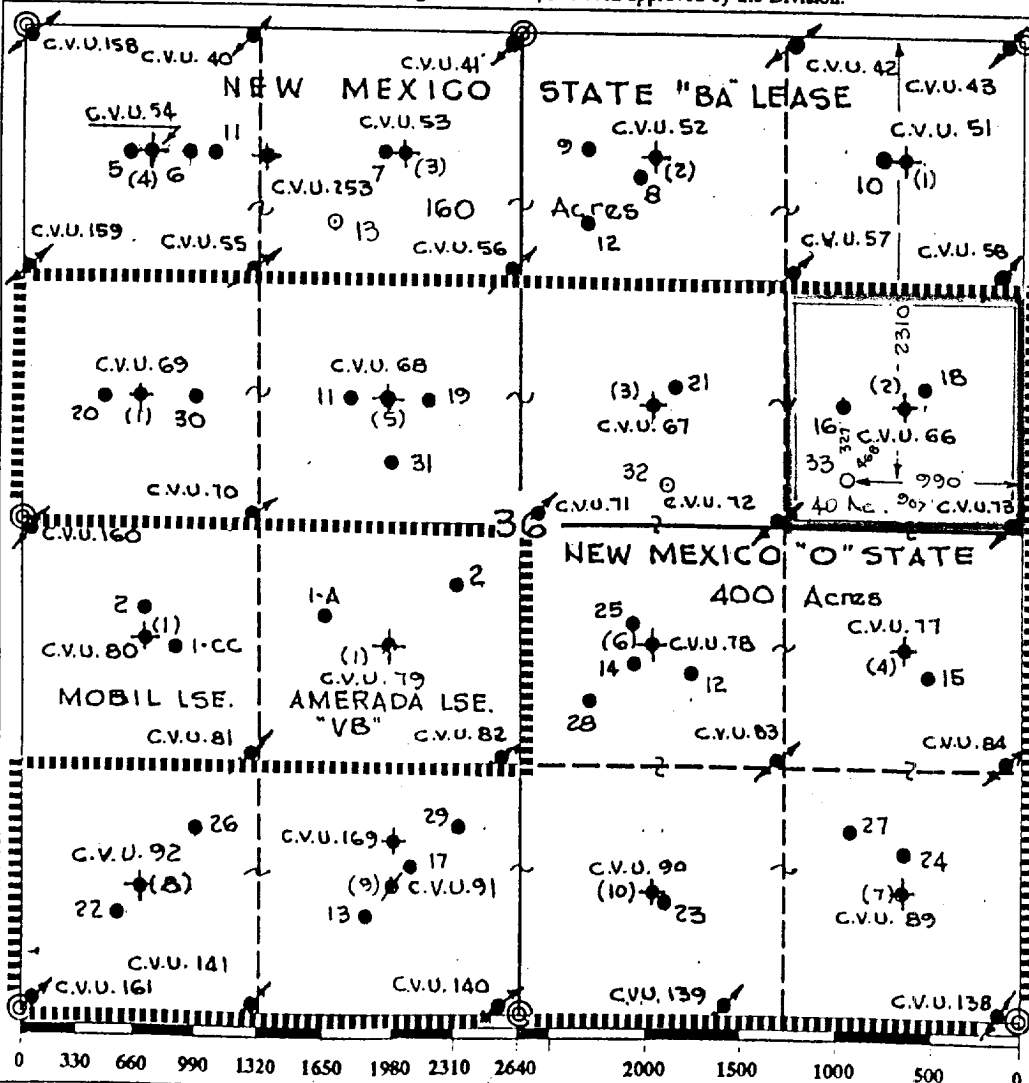
Operator TEXACO PRODUCING INC.			Lease New Mexico "O" State NCT-1		Well No. 33
Unit Letter H	Section 36	Township 17 South	Range 34 East	County Lea	
Actual Footage Location of Well: 2310 feet from the North line and 990 feet from the East line					
Ground level Elev. 3995	Producing Formation Glorieta: Paddock		Pool Vacuum Glorieta	Dedicated Acreage: 40 Acres	

- Outline the acreage dedicated to the subject well by colored pencil or hachure marks on the plat below.
- If more than one lease is dedicated to the well, outline each and identify the ownership thereof (both as to working interest and royalty).
- If more than one lease of different ownership is dedicated to the well, have the interest of all owners been consolidated by communitization, unitization, force-pooling, etc.?
 

Yes  No If answer is "yes" type of consolidation \_\_\_\_\_

If answer is "no" list the owners and tract descriptions which have actually been consolidated. (Use reverse side of this form if necessary.)

No allowable will be assigned to the well until all interests have been consolidated (by communitization, unitization, forced-pooling, or otherwise) or until a non-standard unit, eliminating such interest, has been approved by the Division.



**OPERATOR CERTIFICATION**  
 I hereby certify that the information contained herein is true and complete to the best of my knowledge and belief.

Signature: *Royce Mariott*  
 Printed Name: Royce Mariott  
 Position: Division Surveyor  
 Company: Texaco Producing Inc.  
 Date: August 7, 1990

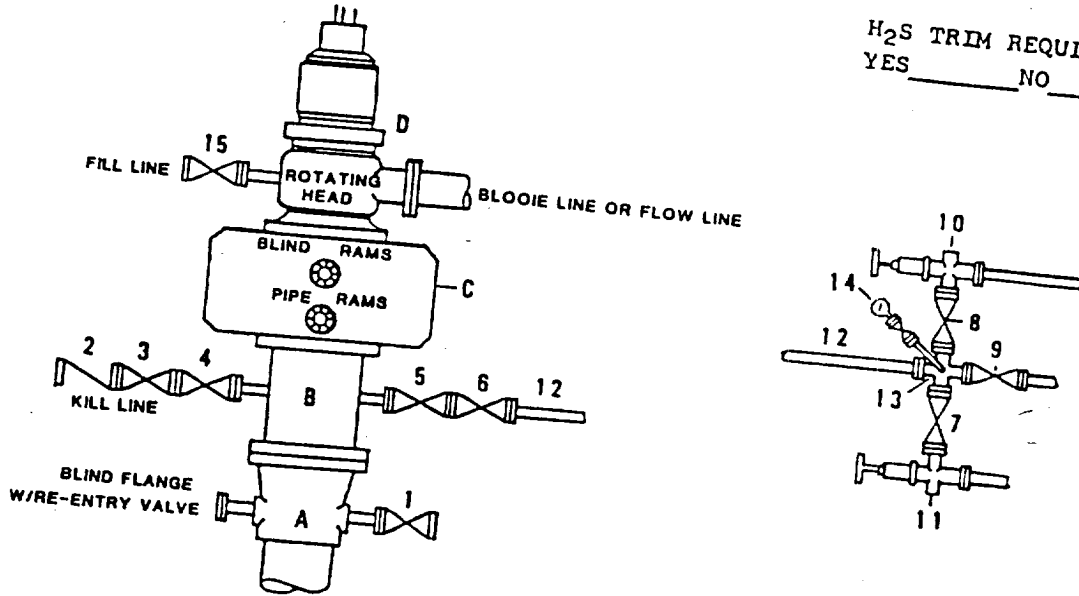
**SURVEYOR CERTIFICATION**  
 I hereby certify that the well location shown on this plat was plotted from field notes of actual surveys made by me or under my supervision, and that the same is true and correct to the best of my knowledge and belief.

Date Surveyed: August 1, 1990  
 Signature & Seal of Professional Surveyor: *John S. Piper*  
 John S. Piper  
 Certificate No. 7254

◆ = CENTRAL Vacuum Unit Producer    ◆ = Central Vacuum Unit Injection Well

**DRILLING CONTROL  
CONDITION II-B 3000 WP  
FOR AIR DRILLING OR  
WHERE NITROGEN OR AIR BLOWS ARE EXPECTED**

H<sub>2</sub>S TRIM REQUIRED  
YES \_\_\_\_\_ NO \_\_\_\_\_



**DRILLING CONTROL  
MATERIAL LIST - CONDITION II - B**

- A Texaco Wellhead
- B 3000# W.P. drilling spool with a 2" minimum flanged outlet for kill line and 3" minimum flanged outlet for choke line.
- C 3000# W.P. Dual ram type preventer, hydraulic operated with 1" steel, 3000# W.P. control lines (where sub-structure height is adequate, 2 - 3000# W.P. single ram type preventers may be utilized).
- D Rotating Head with fill up outlet and extended Blooie Line.
- 1,3,4, 7,8, 2" minimum 3000# W.P. flanged full opening steel gate valve, or Halliburton Lo Torc Plug valve.
- 2 2" minimum 3000# W.P. back pressure valve.
- 5,6,9 3" minimum 3000# W.P. flanged full opening steel gate valve, or Halliburton Lo Torc Plug valve.
- 12 3" minimum schedule 80, Grade "B", seamless line pipe.
- 13 2" minimum x 3" minimum 3000# W.P. flanged cross.
- 10,11 2" minimum 3000# W.P. adjustable choke bodies.
- 14 Cameron Mud Gauge or equivalent ( location optional in choke line).
- 15 2" minimum 3000# W.P. flanged or threaded full opening steel gate valve, or Halliburton Lo Torc Plug valve.

SCALE	DATE	EST. NO.	DWG. NO.
DRAWN BY:			
CHECKED BY:			
APPROVED BY:			



**TEXACO, INC.**  
MIDLAND DIVISION  
MIDLAND, TEXAS



**EXHIBIT C**

16-11-2024

11

11