

DISTRICT I

P.O. Box 1980, Hobbs, NM 88241-1980

DISTRICT II

P.O. Box Drawer DD, Artesia, NM 88211-0719

DISTRICT III

1000 Rio Brazos Rd., Aztec, NM 87410

DISTRICT IV

P.O. Box 2088, Santa Fe, NM 87504-2088

State of New Mexico

Energy, Minerals and Natural Resources Department

Form C-101

Revised February 10, 1994

Instructions on back

Submit to Appropriate District Office

State Lease - 6 Copies

Fee Lease - 5 Copies

OIL CONSERVATION DIVISION

P.O. Box 2088

Santa Fe, New Mexico 87504-2088

☐ AMENDED REPORT

APPLICATION FOR PERMIT TO DRILL, RE-ENTER, DEEPEN, PLUGBACK, OR ADD A ZONE

¹ Operator Name and Address TEXACO EXPLORATION & PRODUCTION INC. 205 E. Bender, HOBBS, NM 88240		² OGRID Number 022351
⁴ Property Code 011048	⁵ Property Name NEW MEXICO O STATE NCT-1	³ API Number 30-025-32339
		⁶ Well No. 36

⁷ Surface Location

Ul or lot no.	Section	Township	Range	Lot.Idn	Feet From The	North/South Line	Feet From The	East/West Line	County
N	36	17S	34E		330	SOUTH	2210	WEST	LEA

⁸ Proposed Bottom Hole Location If Different From Surface

Ul or lot no.	Section	Township	Range	Lot.Idn	Feet From The	North/South Line	Feet From The	East/West Line	County
⁹ Proposed Pool 1 VACUUM DRINKARD					¹⁰ Proposed Pool 2 VACUUM BLINEBRY				

¹¹ Work Type Code A	¹² WellType Code M	¹³ Rotary or C.T. R	¹⁴ Lease Type Code S	¹⁵ Ground Level Elevation 3995' GL, 4009' KB
¹⁶ Multiple Yes	¹⁷ Proposed Depth 8100'	¹⁸ Formation BLINEBRY	¹⁹ Contractor PRIDE	²⁰ Spud Date 8/1/96

²¹ Proposed Casing and Cement Program

SIZE OF HOLE	SIZE OF CASING	WEIGHT PER FOOT	SETTING DEPTH	SACKS OF CEMENT	EST. TOP
11"	8 5/8"	24#	1470'	650 SX, CIR 145 SX	
7 7/8"	5 1/2"	15.5 & 17#	8100'	1375 SX, CIRC 92 SX	
				TOC BY T.S. @ 1000'	
				DV TOOL @ 5013'	

²² Describe the proposed program. If this application is to DEEPEN or PLUG BACK give the data on the present productive zone and proposed new productive zone. Describe the blowout prevention program, if any. Use additional sheets if necessary.

TEPI PROPOSES TO ADD VACUUM BLINEBRY PAY AND DOWNHOLE COMMINGLE THIS ZONE WITH THE VACUUM DRINKARD INTERVAL. THE WELL CURRENTLY PRODUCES ONLY FROM THE VACUUM DRINKARD. DOWNHOLE COMMINGLE APPLICATION HAS BEEN SUBMITTED.

1. MIRU. TOH with rods & pump. Install BOP. TOH with 2-7/8" production tbg.
2. TIH with bit. C/O wellbore to 8050' (PBDT). Perforate Vacuum Blinebry as follows: 6412'-6424', 6442'-6450', 6475'-6480', 6506'-6508', 6520'-6530', 6540'-6550', 6578'-6582', 6658'-6662', 6674'-6684', 6756'-6760', 6772'-6776', 6834'-6836', 6866'-6872', 6878'-6884', 6932'-6938', 6980'-6990', 7028'-7030', 7086'-7090' (4 jsp, 120" phasing, .45" holes, 109' intl, 436 total holes).
3. TIH w/ RBP & treating pkr on 3-1/2" WS. Test WS to 9000 psi while running in hole. Set RBP @ app 7140' & pkr @ 6312'.
4. Load BS w/ 2% fresh KCL water. Test BS to 1000 psi. Acidize Blinebry perms w/ 4000 gals 15% HCL @ max pressure of 9000#.
5. Swab back. Acid frac Blinebry perms w/ 24,000 gals foamed 20% HCL & 42,200 gals foamed WF140 w/ ballsealers @ max pressure of 9000# & max rate of 20 BPM.
6. SI for 2 hrs, flow back load. Possibly test Blinebry zone separately. TOH w/ RBP, pkr, & WS. TIH w/ prod equip & return well to production.

²³ I hereby certify that the rules and regulations of the Oil Conservation Division have been complied with and that the information given above is true and complete to the best of my knowledge and belief.

Signature

Printed Name Monte C. Duncan

Title Engr Asst

Date 7/3/96

Telephone 397-0418

OIL CONSERVATION DIVISION

ORIGINAL SIGNED BY JERRY SEXTON
DISTRICT I SUPERVISOR

Approved By:

Title:

Approval Date: JUL 10 1996

Expiration Date:

Conditions of Approval:

Attached ☐

DISTRICT I

P.O. Box 1980, Hobbs, NM 88241-1980

DISTRICT II

P.O. Box Drawer DD, Artesia, NM 88211-0719

DISTRICT III

1000 Rio Brazos Rd., Aztec, NM 87410

DISTRICT IV

P.O. Box 2088, Santa Fe, NM 87504-2088

State of New Mexico

Energy, Minerals and Natural Resources Department

Form C-102

Revised February 10, 1994

Instructions on back

Submit to Appropriate District Office

State Lease - 4 Copies

Fee Lease - 3 Copies

☐ AMENDED REPORT

OIL CONSERVATION DIVISION

P.O. Box 2088

Santa Fe, New Mexico 87504-2088

WELL LOCATION AND ACREAGE DEDICATION PLAT

¹ API Number 30-025-32339	² Pool Code 61850	³ Pool Name VACUUM BLINEBRY
⁴ Property Code 011048	⁵ Property Name NEW MEXICO O STATE NCT-1	⁶ Well No. 36
⁷ OGRID Number 022351	⁸ Operator Name TEXACO EXPLORATION & PRODUCTION INC.	⁹ Elevation 3995' GL, 4009' KB

¹⁰ Surface Location

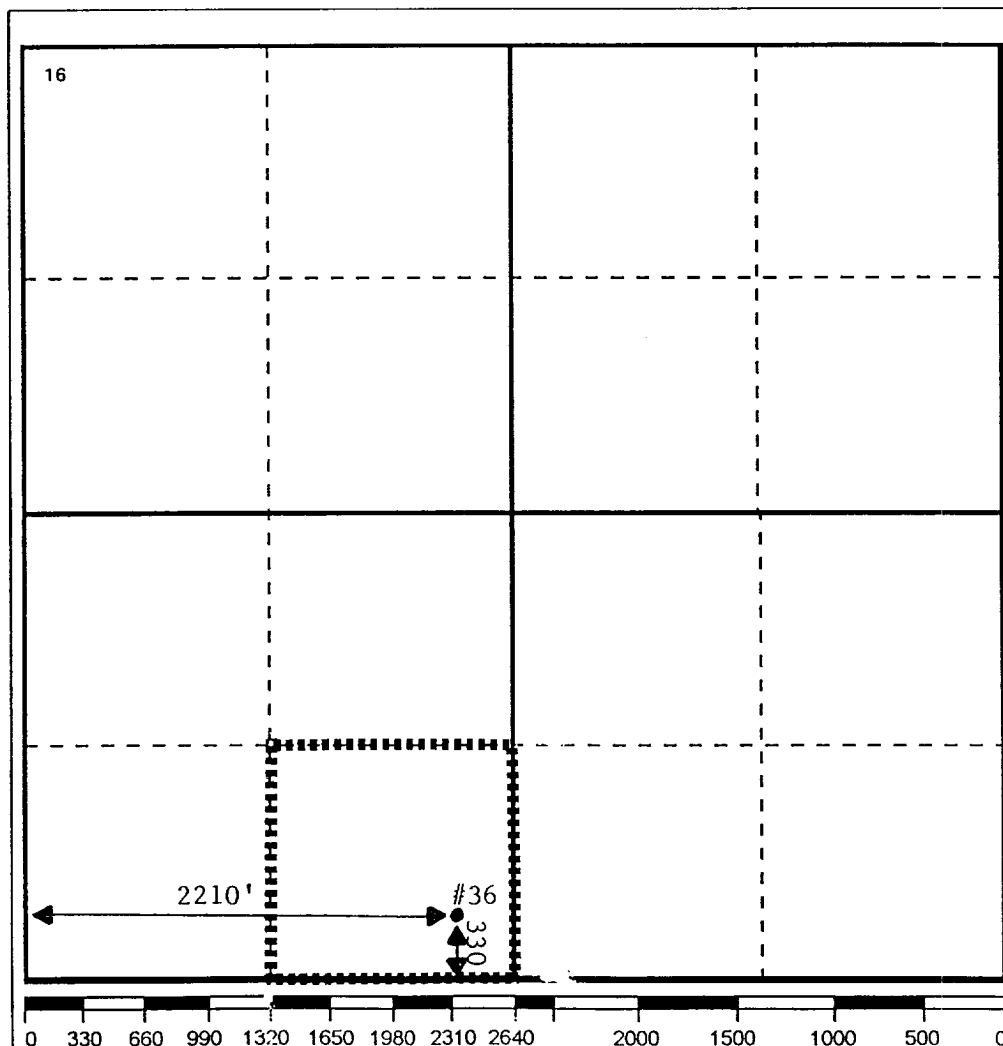
UI or lot no.	Section	Township	Range	Lot.Idn	Feet From The	North/South Line	Feet From The	East/West Line	County
N	36	17S	34E		330	SOUTH	2210	WEST	LEA

¹¹ Bottom Hole Location If Different From Surface

UI or lot no.	Section	Township	Range	Lot.Idn	Feet From The	North/South Line	Feet From The	East/West Line	County

¹² Dedicated Acres 40	¹³ Joint or Infill No	¹⁴ Consolidation Code	¹⁵ Order No.
-------------------------------------	-------------------------------------	----------------------------------	-------------------------

NO ALLOWABLE WILL BE ASSIGNED TO THIS COMPLETION UNTIL ALL INTERESTS HAVE BEEN CONSOLIDATED
OR A NON-STANDARD UNIT HAS BEEN APPROVED BY THE DIVISION

¹⁷ OPERATOR CERTIFICATION

I hereby certify that the information
contained herein is true and complete to the
best of my knowledge and belief

Signature

Printed Name

Monte C. Duncan

Position

Engr Asst

Date

6/25/96

¹⁸ SURVEYOR CERTIFICATION

I hereby certify that the well location shown
on this plat was plotted from field notes of
actual surveys made by me or under my
supervision, and that the same is true and
correct to the best of my knowledge and
belief.

Date Surveyed

Signature & Seal of

Professional Surveyor

Certificate No.