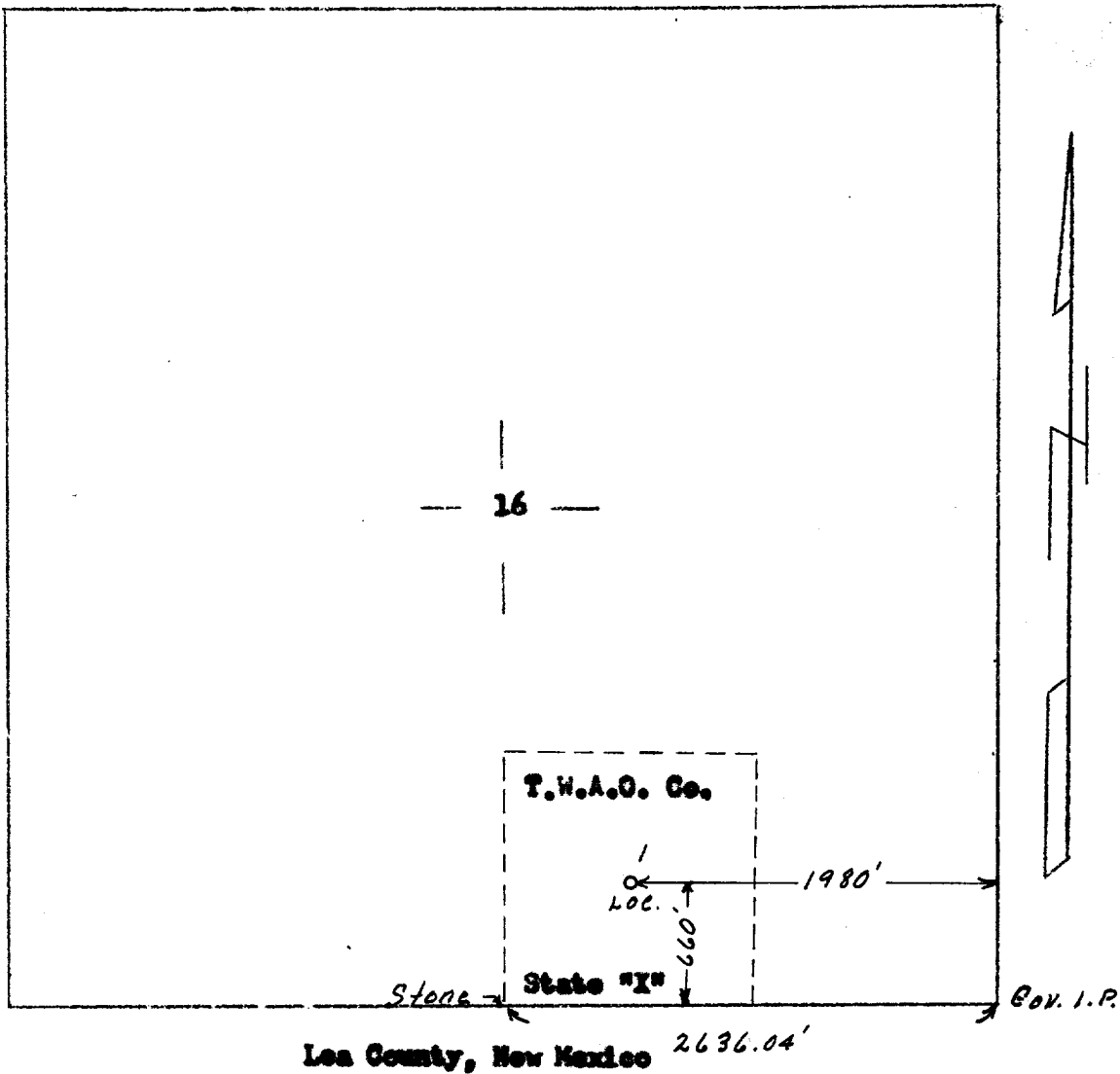


R 37E

T
19
S



WELL LOCATION CERTIFICATION

I, J. M. Amie hereby certify that the location for Tide Water Associated Oil Company's well No. 1 State "X" is located by survey on the ground as represented by this plat.

Signed J. M. Amie

1" = 1000'

Registered Civil Engineer No. 5129
State of Texas