

DISTRICT I  
P.O. Box 1980, Hobbs, NM 88241-1980  
DISTRICT II  
P.O. Box Drawer DD, Artesia, NM 88211-0719  
DISTRICT III  
1000 Rio Brazos Rd., Aztec, NM 87410  
DISTRICT IV  
P.O. Box 2088, Santa Fe, NM 87504-2088

State of New Mexico  
Energy, Minerals and Natural Resources Department

Form C-101  
Revised February 10, 199  
Instructions on back  
Submit to Appropriate District Office  
State Lease - 6 Copies  
Fee Lease - 5 Copies

**OIL CONSERVATION DIVISION**

P.O. Box 2088  
Santa Fe, New Mexico 87504-2088

AMENDED REPORT

**APPLICATION FOR PERMIT TO DRILL, RE-ENTER, DEEPEN, PLUGBACK, OR ADD A ZONE**

<sup>1</sup> Operator Name and Address		<sup>2</sup> OGRID Number
CHEVRON USA INC		4323
15 SMITH ROAD, MIDLAND, TX 79705		<sup>3</sup> API Number
		30 025 20217
<sup>4</sup> Property Code	<sup>5</sup> Property Name	<sup>6</sup> Well No.
29958	L. VAN ETEN, L.	11

<sup>7</sup> Surface Location									
Ul or lot no.	Section	Township	Range	Lot.Idn	Feet From The	North/South Line	Feet From The	East/West Line	County
I	9	20S	37E		1980	SOUTH	660	EAST	LEA

<sup>8</sup> Proposed Bottom Hole Location If Different From Surface									
Ul or lot no.	Section	Township	Range	Lot.Idn	Feet From The	North/South Line	Feet From The	East/West Line	County
<sup>9</sup> Proposed Pool 1					<sup>10</sup> Proposed Pool 2				
MONUMENT PADDOCK									

<sup>11</sup> Work Type Code	<sup>12</sup> WellType Code	<sup>13</sup> Rotary or C.T.	<sup>14</sup> Lease Type Code	<sup>15</sup> Ground Level Elevation
P	O		P	3544' GR
<sup>16</sup> Multiple	<sup>17</sup> Proposed Depth	<sup>18</sup> Formation	<sup>19</sup> Contractor	<sup>20</sup> Spud Date
No	6880'	PADDOCK	Unknown	11/1/2002

<sup>21</sup> Proposed Casing and Cement Program					
SIZE OF HOLE	SIZE OF CASING	WEIGHT PER FOOT	SETTING DEPTH	SACKS OF CEMENT	EST. TOP
12-1/4"	8-5/8"	24#	1233'	675	cement circ.
7-7/8"	5-1/2"	15.5#	6877'	549	

<sup>22</sup> Describe the proposed program. If this application is to DEEPEN or PLUG BACK give the data on the present productive zone and proposed new productive zone. Describe the blowout prevention program, if any. Use additional sheets if necessary.

CHEVRON U.S.A. INTENDS TO TEST THE UPPER PADDOCK (ADD PERFS & ACID STIMULATE)  
THE INTENDED PROCEDURE, CURRENT WELLBORE DIAGRAM, & PROPOSED WELLBORE DIAGRAM IS ATTACHED FOR YOUR APPROVAL.

Permit Expires 9 Months After Approval  
Date Unless Drilling Underway

*Plug Back*

<sup>23</sup> I hereby certify that the rules and regulations of the Oil Conservation Division have been complied with and that the information given above is true and complete to the best of my knowledge and belief.

Signature *Denise Leake*

Printed Name Denise Leake

Title Regulatory Specialist

Date 10/17/2002 Telephone 915-687-7375

OIL CONSERVATION DIVISION	
Approved By:	ORIGINAL SIGNED BY PAUL F. KAUTZ PETROLEUM ENGINEER
Title:	
Approval Date: <b>OCT 24 2002</b>	Expiration Date:
Conditions of Approval:	
Attached	

A

DISTRICT I

P.O. Box 1980, Hobbs, NM 88241-1980

DISTRICT II

P.O. Box Drawer DD, Artesia, NM 88211-0719

DISTRICT III

1000 Rio Brazos Rd., Aztec, NM 87410

DISTRICT IV

P.O. Box 2088, Santa Fe, NM 87504-2088

State of New Mexico  
Energy, Minerals and Natural Resources Department

# OIL CONSERVATION DIVISION

P.O. Box 2088  
Santa Fe, New Mexico 87504-2088

Form C-102  
Revised February 10, 1999  
Instructions on back  
Submit to Appropriate District Office  
State Lease - 4 Copies  
Fee Lease - 3 Copies  
 AMENDED REPORT

## WELL LOCATION AND ACREAGE DEDICATION PLAT

<sup>1</sup> API Number 30 025 20217	<sup>2</sup> Pool Code 47080	<sup>3</sup> Pool Name MONUMENT PADDOCK
<sup>4</sup> Property Code 29958	<sup>5</sup> Property Name VAN ETTEN, <i>LA</i>	<sup>6</sup> Well No. 11
<sup>7</sup> OGRID Number 4323	<sup>8</sup> Operator Name CHEVRON USA INC	<sup>9</sup> Elevation 3544' GR

### <sup>10</sup> Surface Location

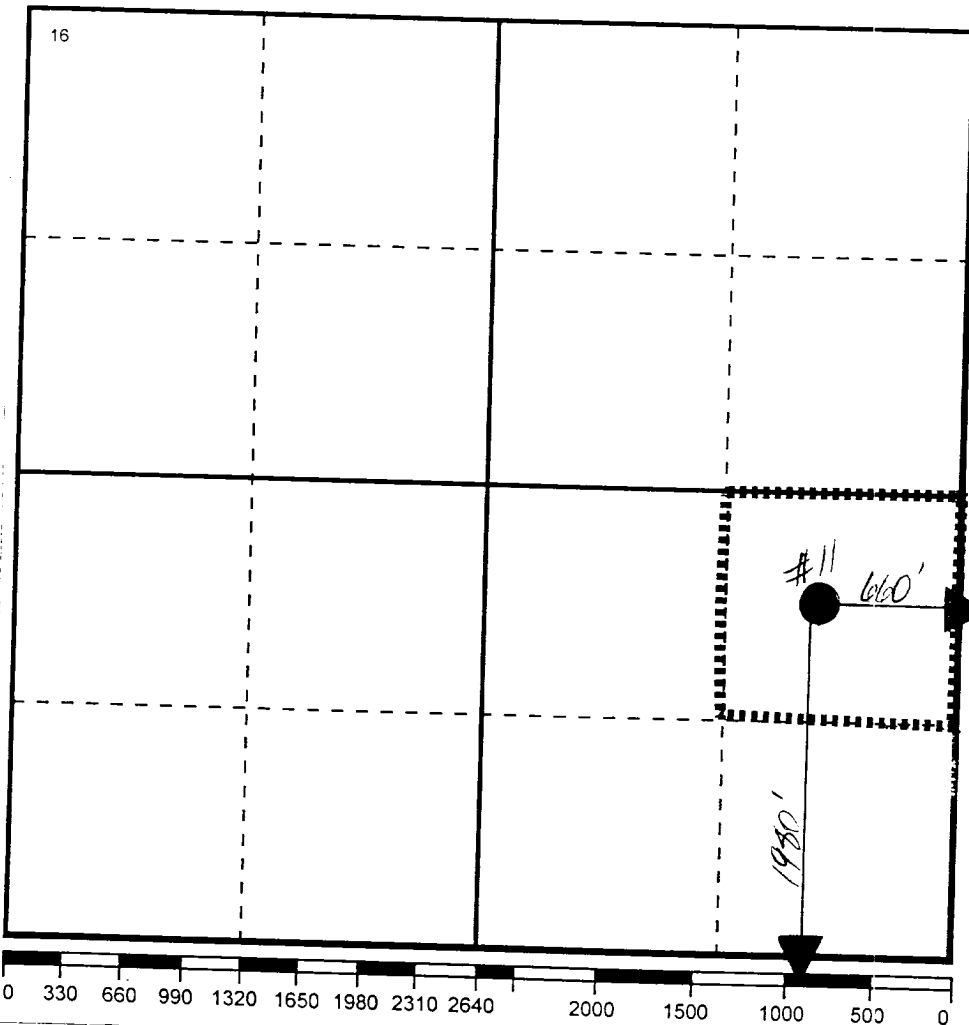
UI or lot no	Section	Township	Range	Lot.Idn	Feet From The	North/South Line	Feet From The	East/West Line	County
1	9	20S	37E		1980	SOUTH	660	EAST	LEA

### <sup>11</sup> Bottom Hole Location If Different From Surface

UI or lot no.	Section	Township	Range	Lot.Idn	Feet From The	North/South Line	Feet From The	East/West Line	County

<sup>12</sup> Dedicated Acre 40	<sup>13</sup> Joint or Infill No	<sup>14</sup> Consolidation Code	<sup>15</sup> Order No.
------------------------------------	-------------------------------------	----------------------------------	-------------------------

NO ALLOWABLE WILL BE ASSIGNED TO THIS COMPLETION UNTIL ALL INTERESTS HAVE BEEN CONSOLIDATED OR A NON-STANDARD UNIT HAS BEEN APPROVED BY THE DIVISION



### <sup>17</sup> OPERATOR CERTIFICATION

I hereby certify that the information contained herein is true and complete to the best of my knowledge and belief

Signature

*Denise Leake*

Printed Name

Denise Leake

Position

Regulatory Specialist

Date

10/17/2002

### <sup>18</sup> SURVEYOR CERTIFICATION

I hereby certify that the well location shown on this plat was plotted from field notes of actual surveys made by me or under my supervision, and that the same is true and correct to the best of my knowledge and belief.

Date Surveyed

Signature & Seal of Professional Surveyor

Certificate No.

**L. Van Etten #11**  
**Recomplete and Test the Upper Paddock Formation**

API No.: 30-025-20217

Section: 9 Township: 20S Range: 37E

Surface Location: 1980' FSL & 660' FEL

Status: Shut-In

**PROCEDURE**

1. MIRU rig. Bleed pressure from well, if any. ND wellhead. NU BOPE and EPA Equipment. Test BOPE. POOH w/ 2-3/8" tubing.
2. RU foam unit(s). PU 4 3/4" bit and RIH to PBTD @ 5065'. D/O 35' cement cap and CIBP @ 5100'. Continue to make bit run to 5240'. POOH w/ bit. RD foam unit(s).
3. MIRU Baker Atlas. Run GR Log and tie into Simultaneous Acoustilog (Lane Wells) dated 12/29/63. Perforate the following with 3-1/8" slick guns loaded with 3 JSPF. 120 degree charges:

Top Depth	Bottom Depth	Total Footage	# Holes
5223	5229	6	18

4. RIH w/ 5 1/2" treating packer and workstring. Set packer at +/-5175'. Acidize perfs with **750** gal 15% anti-sludge HCl acid at **2-4 bpm** and **5000 psi** max treating pressure. Displace acid with 2% KCl. Do not overdisplace. Record ISIP, 5, 10, & 15 minute SIP's. SI well for 2 hrs to allow acid to spend.
5. Swab well to recover load. Record recovered volumes, pressures, & fluid levels. Discuss results w/ Engineering.
6. If oil shows are present, POOH w/ packer. RIH w/ RBP to +/-3700'. Drop sand to cover RBP. Cement squeeze the Eumont (3468'-3540'). D/O CICR and cement. Wash off sand from RBP and POOH w/ RBP. RIH w/ production tubing. ND BOPE. NU wellhead. RIH w/ rods & pump. (Art. Lift Rep to design lift system.)
7. If high water volumes are present, set CIBP @ +/- 5100' and prep the well for P&A.

Engineer: Michael R. Villalva  
 915-687-7250

# CURRENT WELL DATA SHEET

**Field:** Eumont **Well Name:** L. Van Etten #11  
**Location:** 1980' FSL & 660' FEL **Sec:** 9-I **Township:** 20S **Range:** 37E  
**County:** Lea **St:** New Mexico **Refno:** FB3704 **API:** 30-025-20217 **Cost Center:** BCU31  
**Current Status:** Shut-In **Anchor Test Date:** \_\_\_\_\_  
**Current Producing Formation(s):** Queen-Penrose  
**Initial Producing Formation(s):** Tubb

**Surface Csg.**  
 Size: 8 5/8"  
 Wt.: 24#  
 Set @: 1233'  
 Sxs cmt: 675  
 Circ: Yes  
 TOC: Surface  
 Hole Size: 12 1/4"

KB: 3556  
 DF: 3555  
 GL: 3544  
 Spud Date: 12/4/1963  
 Compl. Date: 1/23/1964

**Production Csg.**  
 Size: 5 1/2"  
 Wt.: 15.5#  
 Set @: 6877'  
 Sxs Cmt: 549  
 Circ: No  
 TOC: 2547' by TS  
 Hole Size: 7 7/8"

**Tubing Detail** 4/17/1997  

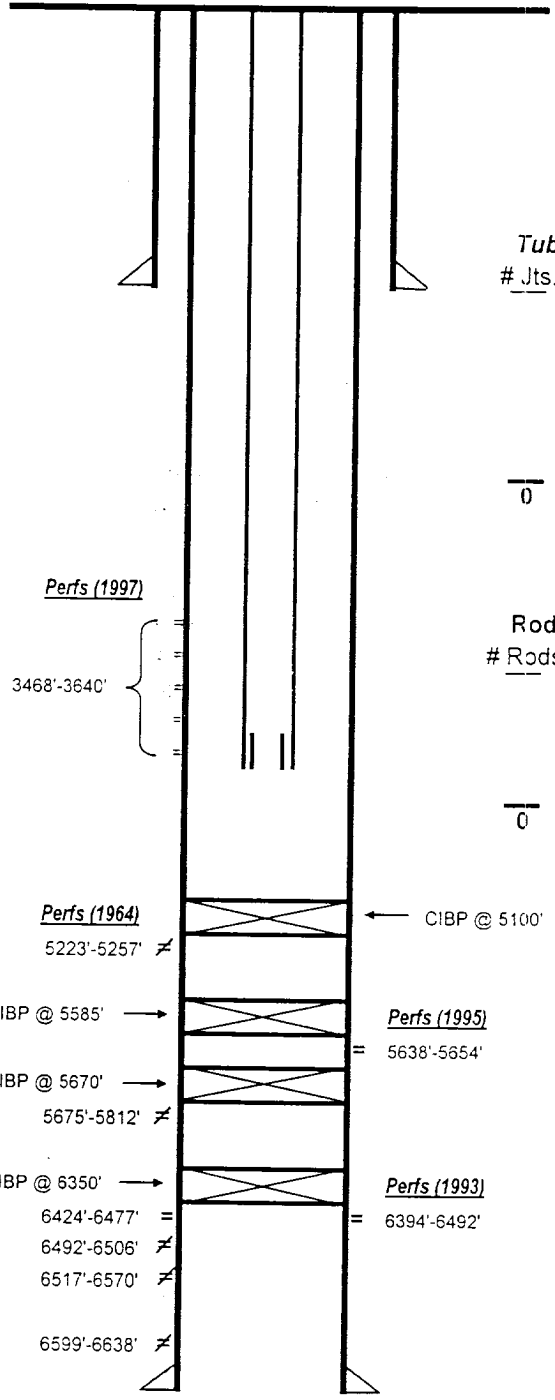
# Jts.	Size	Footage
	KB Correction	0.00
	2 3/8" tubing	3645.00
	SN	
0	EOT >>>	3645.00

COTD: 5065'  
 PBDT: 5065'  
 TD: 6880'

**Rod Detail** 4/17/1997  

# Rods	Size	Footage
0		0.00

Yates	<u>2588</u>
7 Rivers	<u>2859</u>
Queen	<u>3362</u>
Penrose	<u>3470</u>
Grayburg	<u>3650</u>
San Andres	<u>3996</u>
Glorietta	<u>5121</u>
Blinbry	<u>5638</u>
Tubb	<u>6248</u>
Drinkard	<u>6580</u>



**Remarks:** see Well History & Failure History tabs

Prepared by: MRV  
 Date: 10/4/2002  
 Updated by: \_\_\_\_\_

**PROPOSED WELL DATA SHEET**

Field: 47080 Monument - Paddock Well Name: L. Van Etten #11  
 Location: 1980' FSL & 660' FEL Sec: 9-I Township: 20S Range: 37E  
 County: Lea St: New Mexico Refno: FB3704 API: 30-025-20217 Cost Center: BCU937000  
 Current Status: Producing - Rods Anchor Test Date: \_\_\_\_\_  
 Current Producing Formation(s): Paddock  
 Initial Producing Formation(s): Tubb

**Surface Csg.**

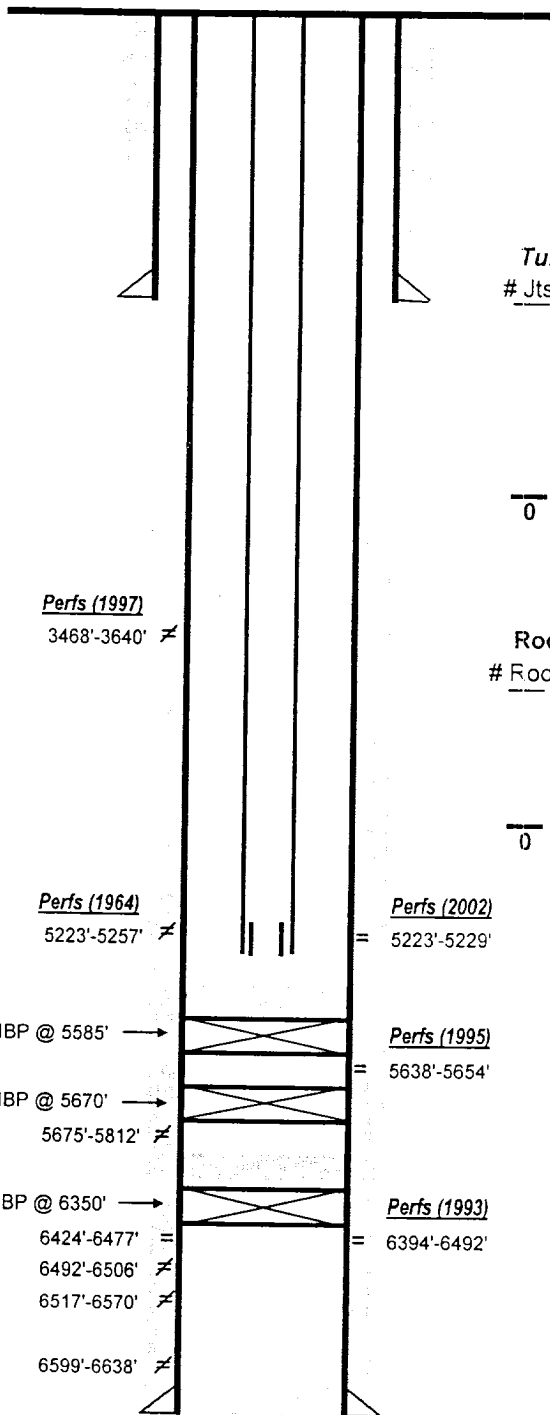
Size: 8 5/8"  
 Wt.: 24#  
 Set @: 1233'  
 Sxs cmt: 675  
 Circ: Yes  
 TOC: Surface  
 Hole Size: 12 1/4"

**Production Csg.**

Size: 5 1/2"  
 Wt.: 15.5#  
 Set @: 6877'  
 Sxs Cmt: 549  
 Circ: No  
 TOC: 2547' by TS  
 Hole Size: 7 7/8"

COTD: 5550'  
 PBD: 5550'  
 TD: 6880'

Yates 2588  
 7 Rivers 2859  
 Queen 3362  
 Penrose 3470  
 Grayburg 3650  
 San Andres 3996  
 Glorietta 5121  
 Blinebry 5638  
 Tubb 6248  
 Drinkard 6580



KB: 3556  
 DF: 3555  
 GL: 3544  
 Spud Date: 12/4/1963  
 Compl. Date: 1/23/1964

**Tubing Detail**

# Jts.	Size	10/22/2002 Footage
	KB Correction	0.00
	2 3/8" tubing SN	5240.00
<u>0</u>	EOT >>>	<u>5240.00</u>

**Rod Detail**

# Rods	Size	10/22/2002 Footage
	7/8", 3/4" rods	5225.00
<u>0</u>		<u>5225.00</u>

Remarks: see Well History & Failure History tabs

Prepared by: MRV  
 Date: 10/4/2002  
 Updated by: MRV 10/8/02