

All distances must be from the outer boundaries of the Section.

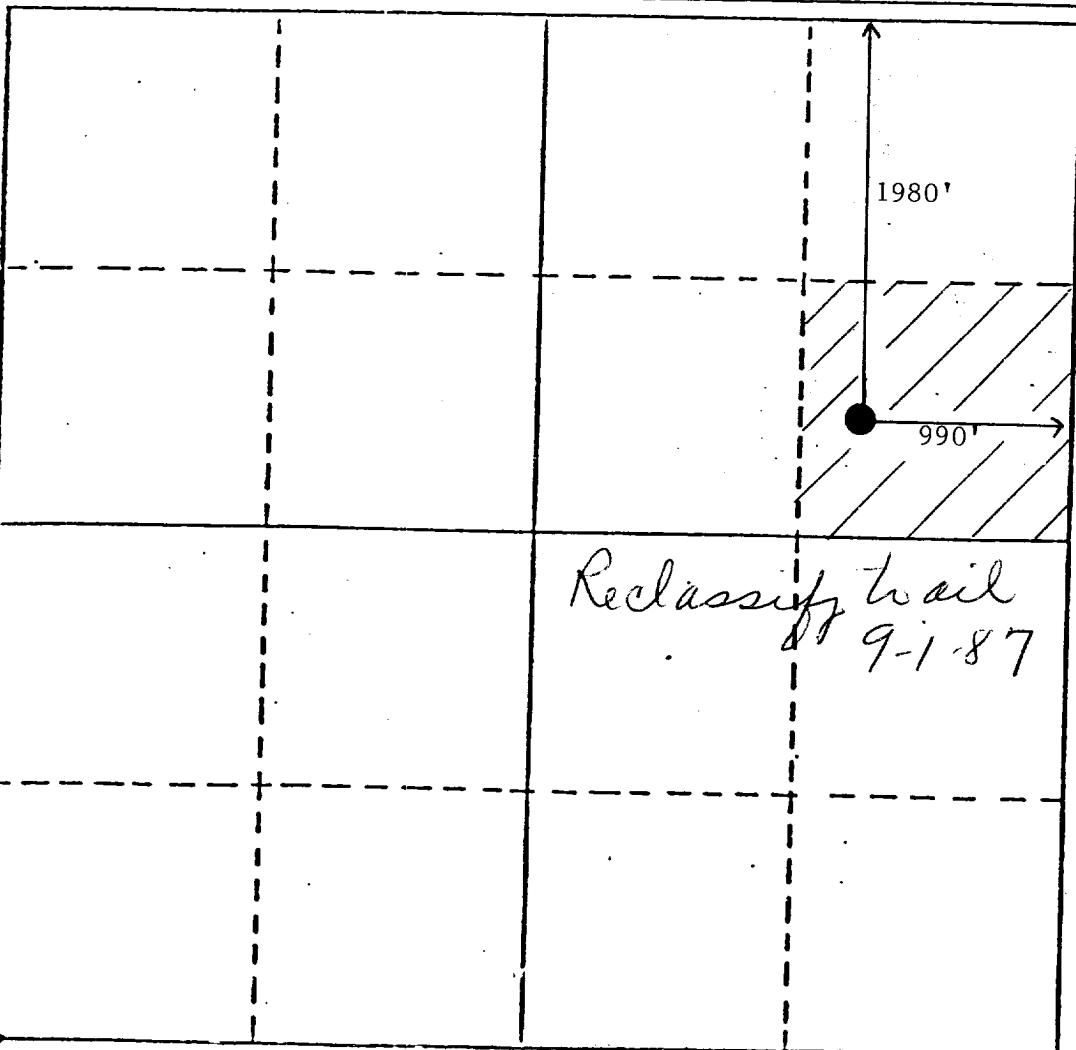
Operator Marathon Oil Company		Lease Hansen State			Well No. 4
Unit Letter H	Section 16	Township 20-S	Range 37-E	County Lea	
Actual Footage Location of Well: 1980 feet from the North line and 990 feet from the East line					
Ground Level Elev. 3544'	Producing Formation Eumont, Queen		Pool Eumont	Dedicated Acreage: 40 Acres	

1. Outline the acreage dedicated to the subject well by colored pencil or hachure marks on the plat below.
2. If more than one lease is dedicated to the well, outline each and identify the ownership thereof (both as to working interest and royalty).
3. If more than one lease of different ownership is dedicated to the well, have the interests of all owners been consolidated by communitization, unitization, force-pooling, etc?

Yes No If answer is "yes," type of consolidation _____

If answer is "no," list the owners and tract descriptions which have actually been consolidated. (Use reverse side of this form if necessary.) _____

No allowable will be assigned to the well until all interests have been consolidated (by communitization, unitization, forced-pooling, or otherwise) or until a non-standard unit, eliminating such interests, has been approved by the Division



CERTIFICATION

I hereby certify that the information contained herein is true and complete to the best of my knowledge and belief.

Eric M. Pringle

Name
Eric M. Pringle

Position
Engineer

Company
Marathon Oil Company

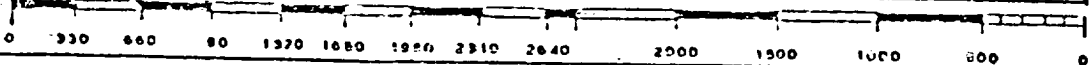
Date
July 30, 1987

I hereby certify that the well location shown on this plat was plotted from field notes of actual surveys made by me or under my supervision, and that the same is true and correct to the best of my knowledge and belief.

Date Surveyed

Registered Professional Engineer and/or Land Surveyor

Certificate No.



RECEIVED
JUL 31 1987
OCD
HOBB'S OFFICE