

Magnolia Petroleum Co. - Ur. 5/8 Int.
General Crude Oil Co. - " 1/8 "
Estate of Robt. R. Penn - " 1/4 "

3-37

Form X-1313

Magnolia Petroleum Company PRODUCING DEPARTMENT

Location made June 2 1937

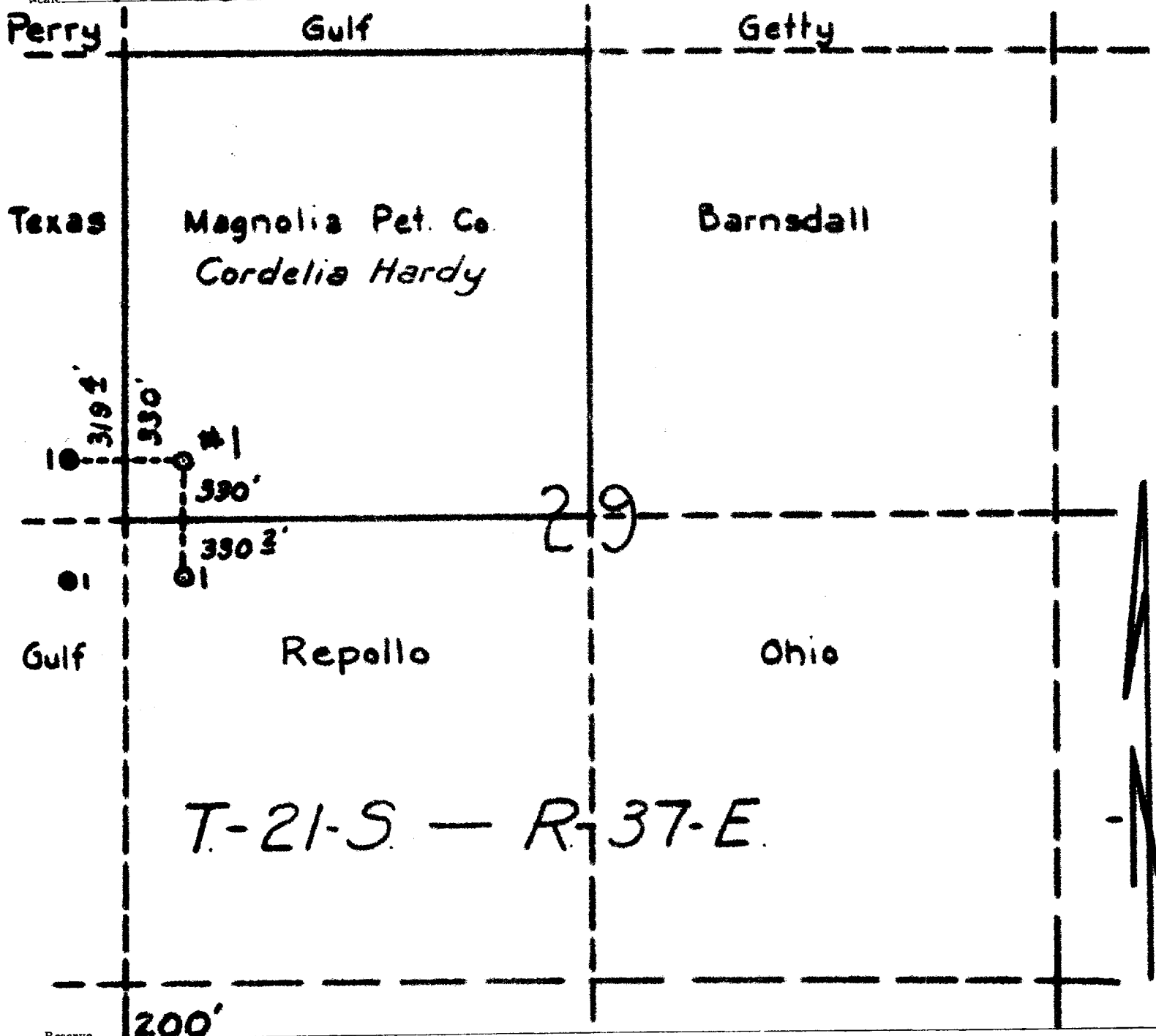
Cordelia Hardy Well No. 1

NM-103 Lea District

Lease NM-627 acres 160 NW 1/4 Sec. 29-21-S-37-E District Township

Lea County, New Mexico

Scale 1" = 800' N S E W



T-21-S - R-37-E

Special instructions

Location changed on account of

Date work is commenced _____, 193____ Supt.

Location approved by _____ Plat made by R.G. Watts

Magnolia Petroleum Company
PRODUCING DEPARTMENT

Location for Well No. _____

File No. _____

Rec'd 5-12-86