

NEW MEXICO OIL CONSERVATION COMMISSION  
WELL LOCATION AND ACREAGE DEDICATION PLAT

Form 7-73  
Supersedes 1-1-73  
Effective 1-1-73

All distances must be from the outer boundaries of the Section

CONTINENTAL OIL COMPANY			Lessee SKAGGS B		Well No. 7
K	11	Township 20 SOUTH	Range 37 EAST	County LEA	
1650		SOUTH	1650	WEST	
3586' Gr. (Est.)		Section and Formation QUEEN	Pool EUMONT GAS		Dedicated Acreage 320/60

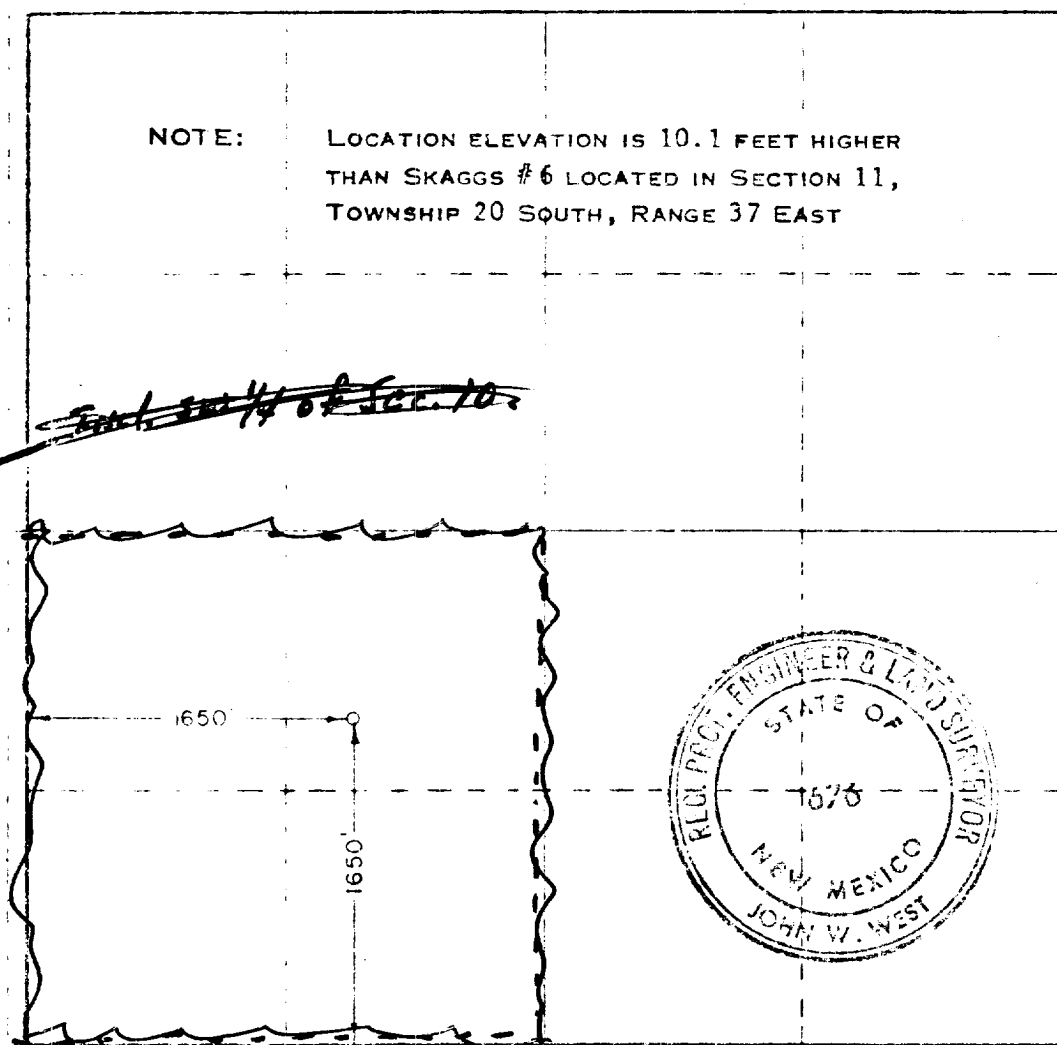
- Outline the acreage dedicated to the subject well by colored pencil or hatchure marks on the plat below.
- If more than one lease is dedicated to the well, outline each and identify the ownership thereof (both as to working interest and royalty).
- If more than one lease of different ownership is dedicated to the well, have the interests of all owners been consolidated by communitization, unitization, force-pooling, etc?

☒ Yes ☐ No If answer is "yes," type of consolidation Comm. Agr. 2986

If answer is "no," list the owners and tract descriptions which have actually been consolidated. (Use reverse side of this form if necessary.)

No allowable will be assigned to the well until all interests have been consolidated (by communitization, unitization, force-pooling, or otherwise) or until a non-standard unit, eliminating such interests, has been approved by the Commission.

NOTE: LOCATION ELEVATION IS 10.1 FEET HIGHER THAN SKAGGS #6 LOCATED IN SECTION 11, TOWNSHIP 20 SOUTH, RANGE 37 EAST



CERTIFICATION

I hereby certify that the information contained herein is true and complete to the best of my knowledge and belief.

Robert Gault  
District Office Manager  
Continental Oil Company  
Date 5-24-74

I hereby certify that the well location shown on this plat was plotted from field notes of actual surveys made by me or under my supervision, and that the same is true and correct to the best of my knowledge and belief.

Date Surveyed  
APRIL 30, 1974

Registered Professional Land Surveyor  
State of New Mexico

John W. West  
Surveyor