

NO. OF COPIES RECEIVED	
DISTRIBUTION	
SANTA FE	
FILE	
U.S.G.S.	
LAND OFFICE	
OPERATOR	

NEW MEXICO OIL CONSERVATION COMMISSION

Form C-101  
Revised 1-1-65

5A. Indicate Type of Lease  
STATE  FEE

5. State Oil & Gas Lease No.

APPLICATION FOR PERMIT TO DRILL, DEEPEN, OR PLUG BACK

1a. Type of Work DRILL <input checked="" type="checkbox"/> DEEPEN <input type="checkbox"/> PLUG BACK <input type="checkbox"/>		7. Unit Agreement Name Central Drinkard Unit	
b. Type of Well OIL WELL <input type="checkbox"/> GAS WELL <input checked="" type="checkbox"/> OTHER _____ SINGLE ZONE <input checked="" type="checkbox"/> MULTIPLE ZONE <input type="checkbox"/>		8. Farm or Lease Name	
2. Name of Operator Gulf Oil Corporation		9. Well No. 406	
3. Address of Operator Box 670, Hobbs, New Mexico 88240		10. Field and Pool, or Wildcat Drinkard	
4. Location of Well UNIT LETTER <u>J **</u> LOCATED <u>2200'</u> FEET FROM THE <u>South</u> LINE AND <u>1470</u> FEET FROM THE <u>East</u> LINE OF SEC. <u>33</u> TWP. <u>21-S</u> RGE. <u>37-E</u> NMPM		12. County Lea	
19. Proposed Depth 6595'		19A. Formation Drinkard	20. Rotary or C.T. Rotary
21. Elevations (Show whether DP, RT, etc.) 3443' GL	21A. Kind & Status Plug. Bond Blanket	21B. Drilling Contractor	22. Approx. Date Work will start September 18, 1976

PROPOSED CASING AND CEMENT PROGRAM

SIZE OF HOLE	SIZE OF CASING	WEIGHT PER FOOT	SETTING DEPTH	SACKS OF CEMENT	EST. TOP
11"	8-5/8"	24#	1200'	Circulate	
7-7/8"	5-1/2"	15.5#	6595'*	Circulate	

\*Will set DV tool at approximately 2400' and circulate cement.

Gas is Dedicated

BOP: See Drawing No. 3 attached.

\*\* Well to be directionally drilled with bottom of hole location to be within 100' of 2390' FSL & 870' FEL, Section 33, 21-S, 37-E, as required by R-5263.

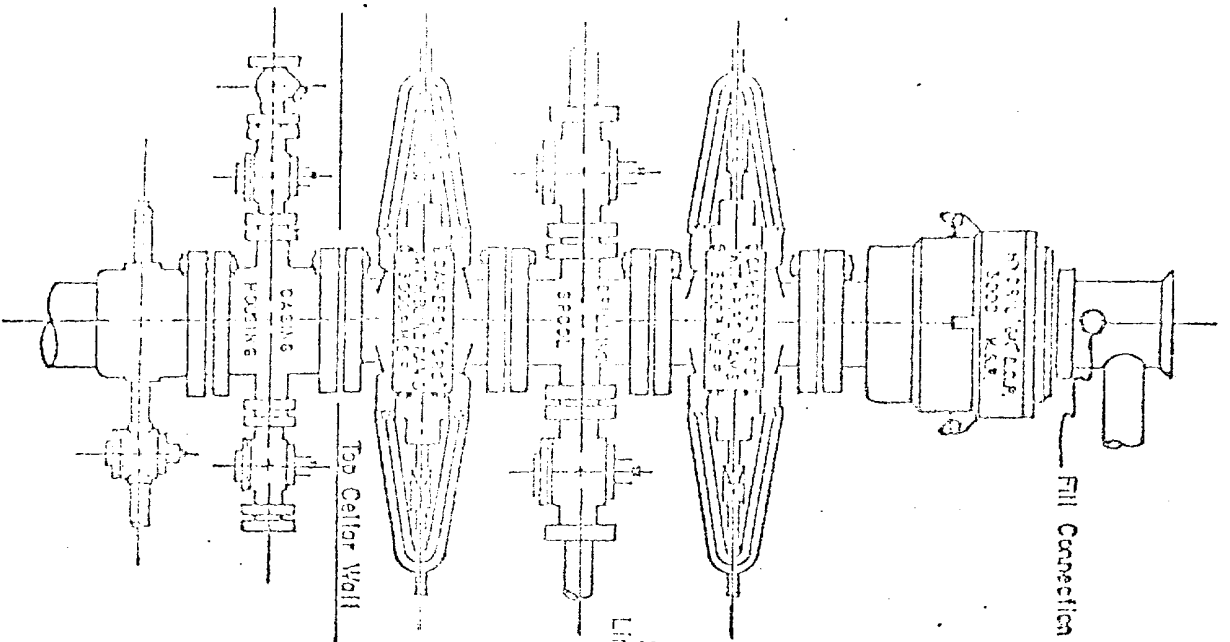
IN ABOVE SPACE DESCRIBE PROPOSED PROGRAM; IF PROPOSAL IS TO DEEPEN OR PLUG BACK, GIVE DATA ON PRESENT PRODUCTIVE ZONE AND PROPOSED NEW PRODUCTIVE ZONE. GIVE BLOWOUT PREVENTER PROGRAM, IF ANY.

I hereby certify that the information above is true and complete to the best of my knowledge and belief.

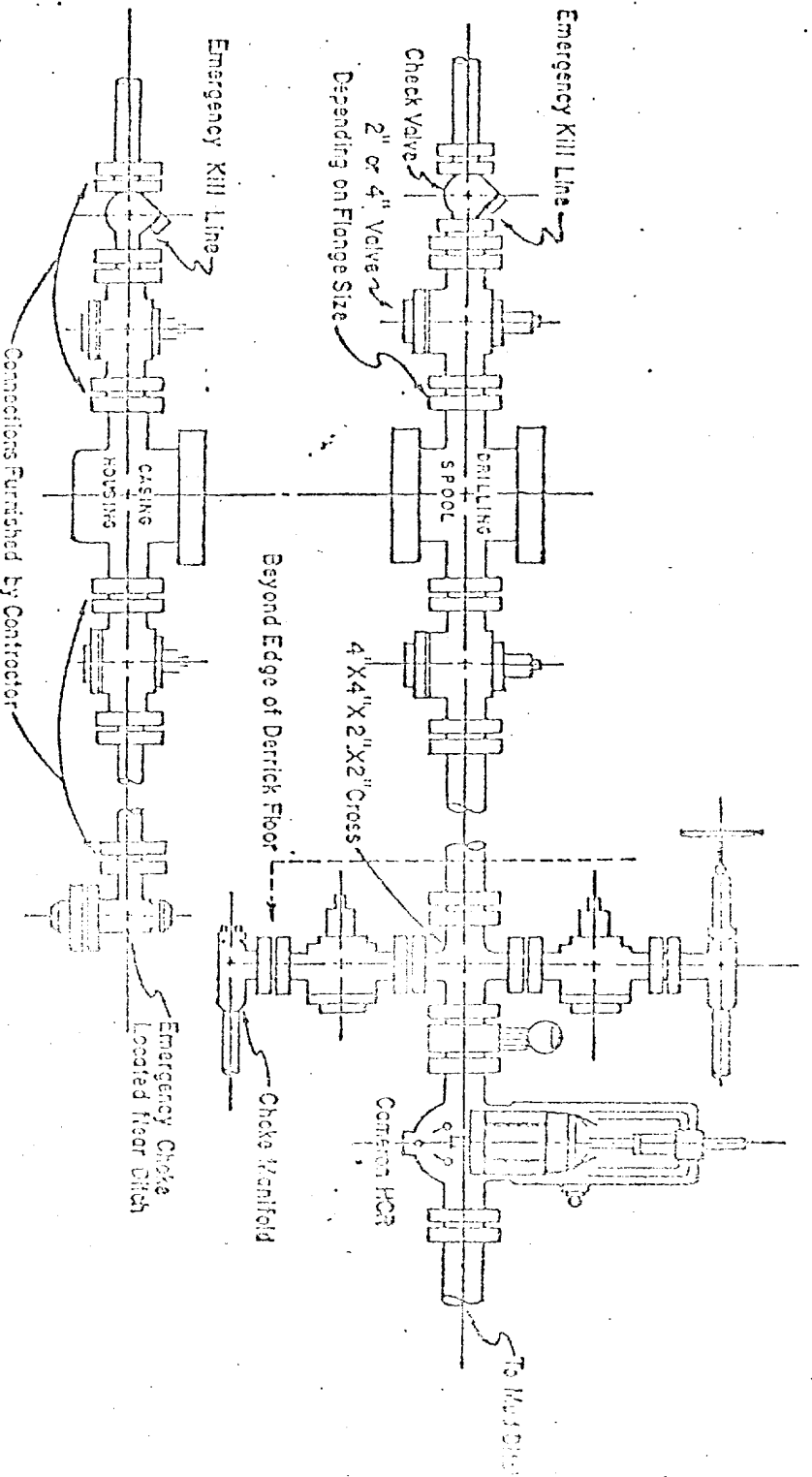
Signed W. B. Boland Title Area Production Manager Date September 13, 1976

(This space for State Use)

APPROVED BY Jerry Sexton TITLE SUPERVISOR DISTRICT I DATE SEP 14 1976  
CONDITIONS OF APPROVAL, IF ANY



See Detail of 4" Flow Line and Choke Assembly



3,000 PSI WORKING PRESSURE  
KILL, CHOKE, AND FILL CONNECTIONS  
API Series 500 Flanges or Better

DETAIL OF 4" FLOW LINE CHOKE ASSEMBLY

Minimum assembly for 3000 PSI working pressure will consist of three preventers. The bottom and middle preventers may be Cameron ORC, Cameron Type F single or Sheffer Hydraulic single, and the upper will be Hydril GK. In lieu of the drilling spool, the flanged outlets from the Cameron Type F single open face flanged preventer, provided the outlets are the correct size, may be used for the four-inch flow line and the two-inch kill line.

Size 12-inch preventers may be used for work down through 8-5/8-inch casing. Size 10-inch preventers may be used for work down through 7-5/8-inch casing. Size six-inch preventers are to be used for work through 7-inch and 5-1/2-inch casings.

Minimum operating equipment for the preventers will be: (1) An air operated pump and (2) An accumulator(s) with some means of closing a fluid charge. A closed fluid system is recommended. The closing manifold and remote closing manifold will have a separate four-way valve for each pressure operated device and a Hydril regulator will be provided. Sufficient fluid capacity in the accumulator(s) shall be available to close all the pressure operated devices of the same time with 25 percent reserve. Guffey 551 hydraulic oil shall be used as the operating fluid. The four-inch flow line from the preventers shall be supported by a metal stand or reinforced concrete. All valves throughout the assembly shall be selected for operation in both gas and fluids.

The ram type preventers and the Cameron HCR valve will be provided with stem extensions, universal joints, if needed, and operating wires.

3,000 PSI WORKING PRESSURE  
BLOWOUT PREVENTER HOOK-UP

Casing 500 Flanges, or Better

NEW MEXICO OIL CONSERVATION COMMISSION  
WELL LOCATION AND ACREAGE DEDICATION P

Form O-112  
Supersedes G-128  
Effective 1-1-65

All distances must be from the outer boundaries of the Section

GULF OIL CORP.		Lease CENTRAL DRINKARD UNIT		Well No. 406	
Section J	Section 33	Township 21 SOUTH	Range 37 EAST	County LEA	

Approximate Location of Well:  
2200 feet from the SOUTH line and 1470 feet from the EAST line

Ground Level Elev 3443.0	Producing Formation	Pool	Dedicated Acreage: Acres
-----------------------------	---------------------	------	-----------------------------

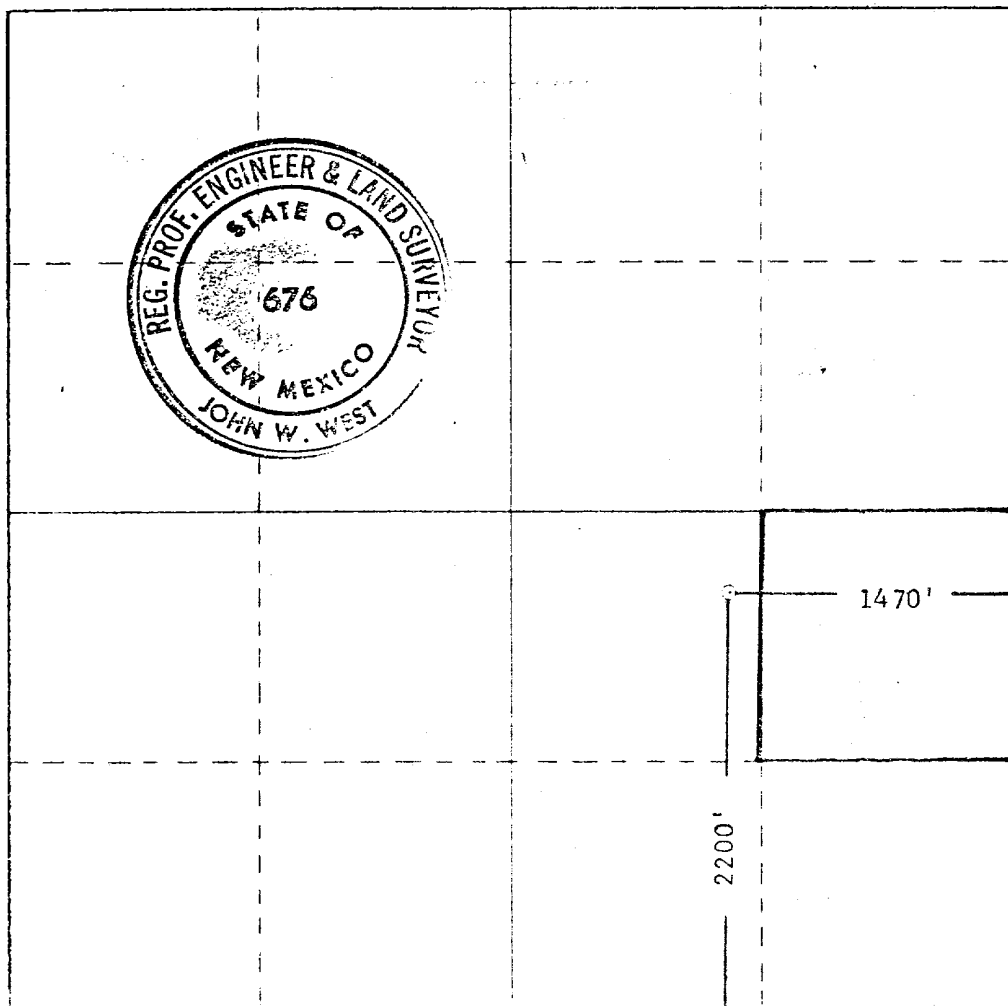
- Outline the acreage dedicated to the subject well by colored pencil or hachure marks on the plat below.
- If more than one lease is dedicated to the well, outline each and identify the ownership thereof (both as to working interest and royalty).
- If more than one lease of different ownership is dedicated to the well, have the interests of all owners been consolidated by communitization, unitization, force-pooling, etc?

Yes  No If answer is "yes," type of consolidation \_\_\_\_\_

If answer is "no," list the owners and tract descriptions which have actually been consolidated. (Use reverse side of this form if necessary.) \_\_\_\_\_

No allowable will be assigned to the well until all interests have been consolidated (by communitization, unitization, forced-pooling, or otherwise) or until a non-standard unit, eliminating such interests, has been approved by the Commission.

Well to be directionally drilled, R-5263



CERTIFICATION

I hereby certify that the information contained herein is true and complete to the best of my knowledge and belief.

*C. D. Borland*

Name  
C. D. BORLAND  
Position  
Area Production Manager  
Company  
Gulf Oil Corporation  
Date  
September 13, 1976

I hereby certify that the well location shown on this plat was plotted from field notes of actual surveys made by me or under my supervision, and that the same is true and correct to the best of my knowledge and belief.

Date Surveyed  
9-10-1976  
Registered Professional Engineer and/or Land Surveyor  
*John W. West*

Certificate No. 676

