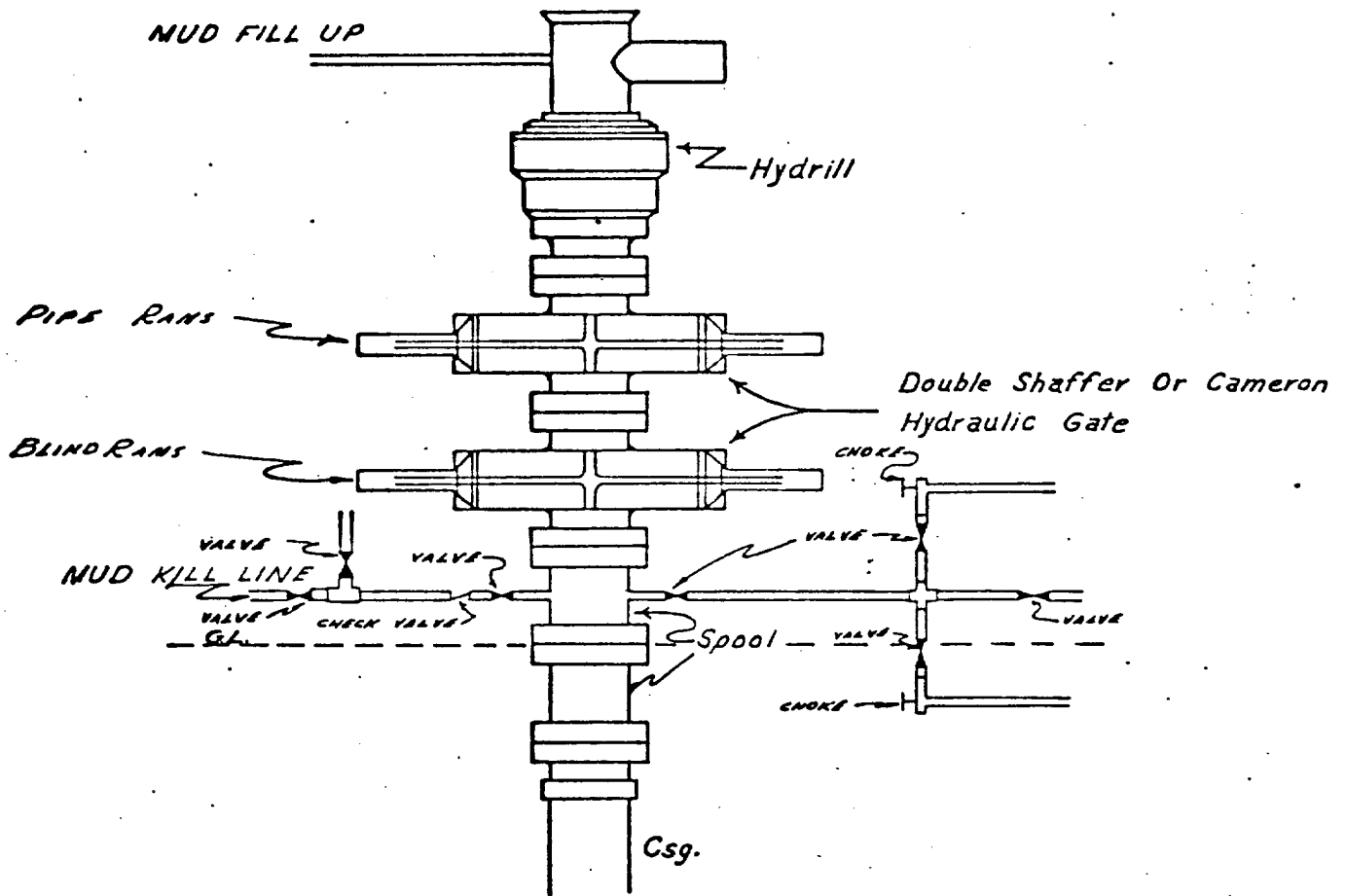


CONTINENTAL OIL COMPANY
Blow-out Preventer Specifications



API Series 900

NOTE:

Manual and Hydraulic controls with closing unit no less than 75' from well head.
Remote controls on rig floor.

DUE TO SUBSTRUCTURE CLEARANCE,
HYDRILL MAY OR MAY NOT BE USED.

Continental Oil Co.

SEMU Eumont # 98