

UNITED STATES  
DEPARTMENT OF THE INTERIOR  
GEOLOGICAL SURVEY30-025-26842  
5. LEASE DESIGNATION AND SERIAL NO.

## APPLICATION FOR PERMIT TO DRILL, DEEPEN, OR PLUG BACK

## 1a. TYPE OF WORK

DRILL ☒DEEPEN ☐PLUG BACK ☐

## b. TYPE OF WELL

OIL  
WELL ☒GAS  
WELL ☐

OTHER

SINGLE  
ZONE ☐MULTIPLE  
ZONE ☒

## 2. NAME OF OPERATOR

Conoco Inc.

## 3. ADDRESS OF OPERATOR

P.O. Box 460 Hobbs N.M. 88240

## 4. LOCATION OF WELL (Report location clearly and in accordance with any State requirements.)\*

At surface

1780' FSL &amp; 660' FWL

At proposed prod. zone

Same

## 14. DISTANCE IN MILES AND DIRECTION FROM NEAREST TOWN OR POST OFFICE\*

## 15. DISTANCE FROM PROPOSED\*

LOCATION TO NEAREST  
PROPERTY OR LEASE LINE, FT.  
(Also to nearest drlg. unit line, if any)18. DISTANCE FROM PROPOSED LOCATION\*  
TO NEAREST WELL, DRILLING, COMPLETED,  
OR APPLIED FOR, ON THIS LEASE, FT.

## 21. ELEVATIONS (Show whether DF, RT, GR, etc.)

3545' GR

## 16. NO. OF ACRES IN LEASE

## 19. PROPOSED DEPTH

6820'

17. NO. OF ACRES ASSIGNED  
TO THIS WELL

40

## 20. ROTARY OR CABLE TOOLS

Rotary

## 22. APPROX. DATE WORK WILL START\*

June 24, 1980

## 23.

## PROPOSED CASING AND CEMENTING PROGRAM

SIZE OF HOLE	SIZE OF CASING	WEIGHT PER FOOT	SETTING DEPTH	QUANTITY OF CEMENT
12 1/4"	9 5/8"	36#	1500'	560 SK. - Circ.
8 3/4"	7"	26#	6820'	1096 SK.

It is proposed to drill a straight hole to a TD of 6820'  
& complete it as a Blinbry / Tubb dual oil well.

See attachments for 10-point well plan & 13-point Surface  
Use Plan.

RECEIVED

APR 21 1980

U. S. GEOLOGICAL SURVEY  
HOBBS, NEW MEXICO

IN ABOVE SPACE DESCRIBE PROPOSED PROGRAM: If proposal is to deepen or plug back, give data on present productive zone and proposed new productive zone. If proposal is to drill or deepen directionally, give pertinent data on subsurface locations and measured and true vertical depths. Give blowout preventer program, if any.

## 24.

SIGNED

W. A. Butterfield

TITLE

Admin. Supervisor

DATE

4/16/80

(This space for Federal or State office use)

PERMIT NO.

APPROVAL DATE

APPROVED BY

TITLE

DATE

CONDITIONS OF APPROVAL, IF ANY:

USGS-6

NMFU-4

FILE

JFO-2 for

MAY 2 1980

JFO

\*See Instructions On Reverse Side

NEW MEXICO OIL CONSERVATION COMMISSION  
WELL LOCATION AND ACREAGE DEDICATION PLAT

Form C-102  
Supersedes C-128  
Effective 1-1-65

All distances must be from the outer boundaries of the Section.

Operator <b>CONOCO, Inc.,</b>		Lease <b>Warren Unit</b>		Well No. <b>81</b>
Unit Letter <b>L</b>	Section <b>21</b>	Township <b>20 South</b>	Range <b>38 East</b>	County <b>Lea</b>

Actual Footage Location of Well:

**1780** feet from the **South** line and **660** feet from the **West** line

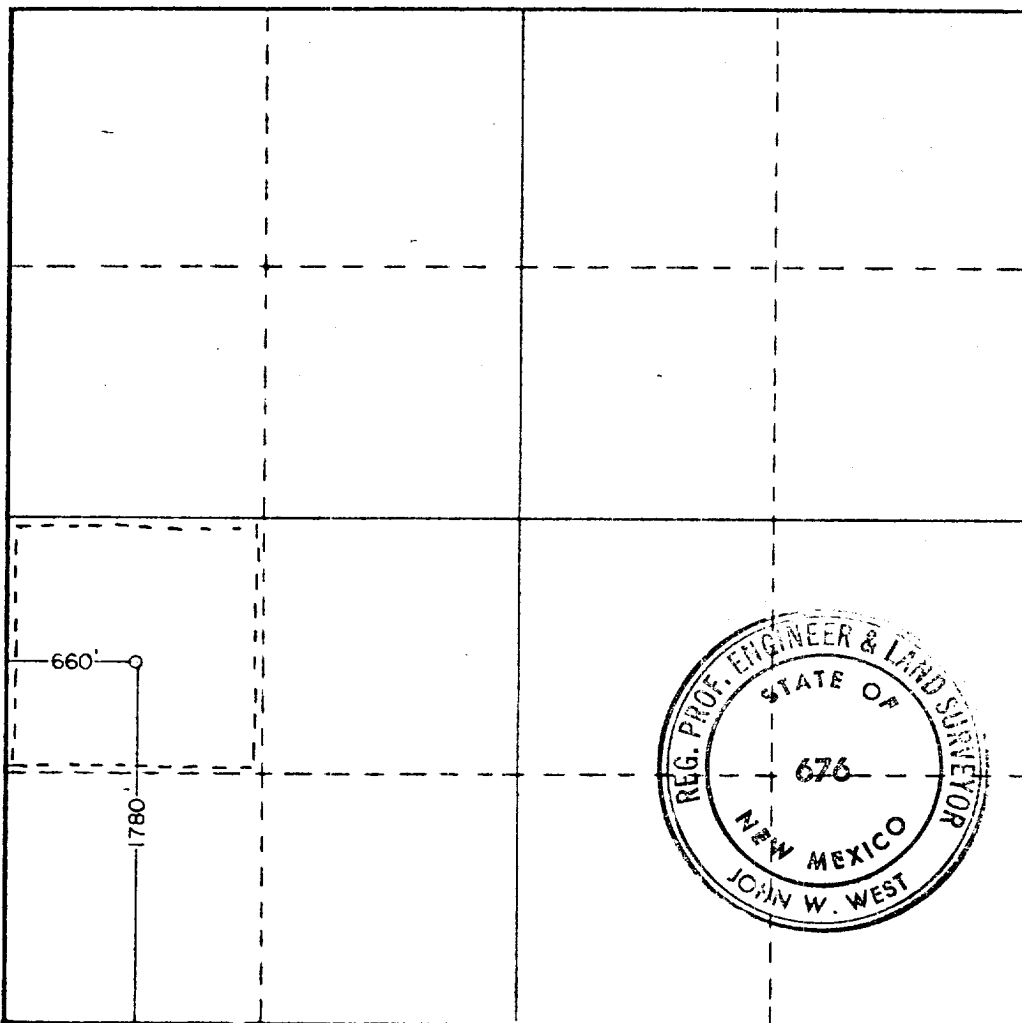
Ground Level Elev. <b>3545.2</b>	Producing Formation <b>Blinberry/Tubb</b>	Pool <b>Blinberry Oil &amp; Gas / Warren Tubb</b>	Dedicated Acreage: <b>40</b> Acres
-------------------------------------	--	--	---------------------------------------

1. Outline the acreage dedicated to the subject well by colored pencil or hatchure marks on the plat below.
2. If more than one lease is dedicated to the well, outline each and identify the ownership thereof (both as to working interest and royalty).
3. If more than one lease of different ownership is dedicated to the well, have the interests of all owners been consolidated by communitization, unitization, force-pooling, etc?

☐ Yes ☐ No If answer is "yes," type of consolidation \_\_\_\_\_

If answer is "no," list the owners and tract descriptions which have actually been consolidated. (Use reverse side of this form if necessary.) \_\_\_\_\_

No allowable will be assigned to the well until all interests have been consolidated (by communitization, unitization, forced-pooling, or otherwise) or until a non-standard unit, eliminating such interests, has been approved by the Commission.



**CERTIFICATION**

I hereby certify that the information contained herein is true and complete to the best of my knowledge and belief.

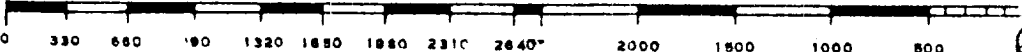
Name Wm A. Butler, Jr.  
 Position Administrative Supervisor  
 Company Conoco Inc.  
 Date 4/16/80

I hereby certify that the well location shown on this plat was plotted from field notes of actual surveys made by me or under my supervision, and that the same is true and correct to the best of my knowledge and belief.

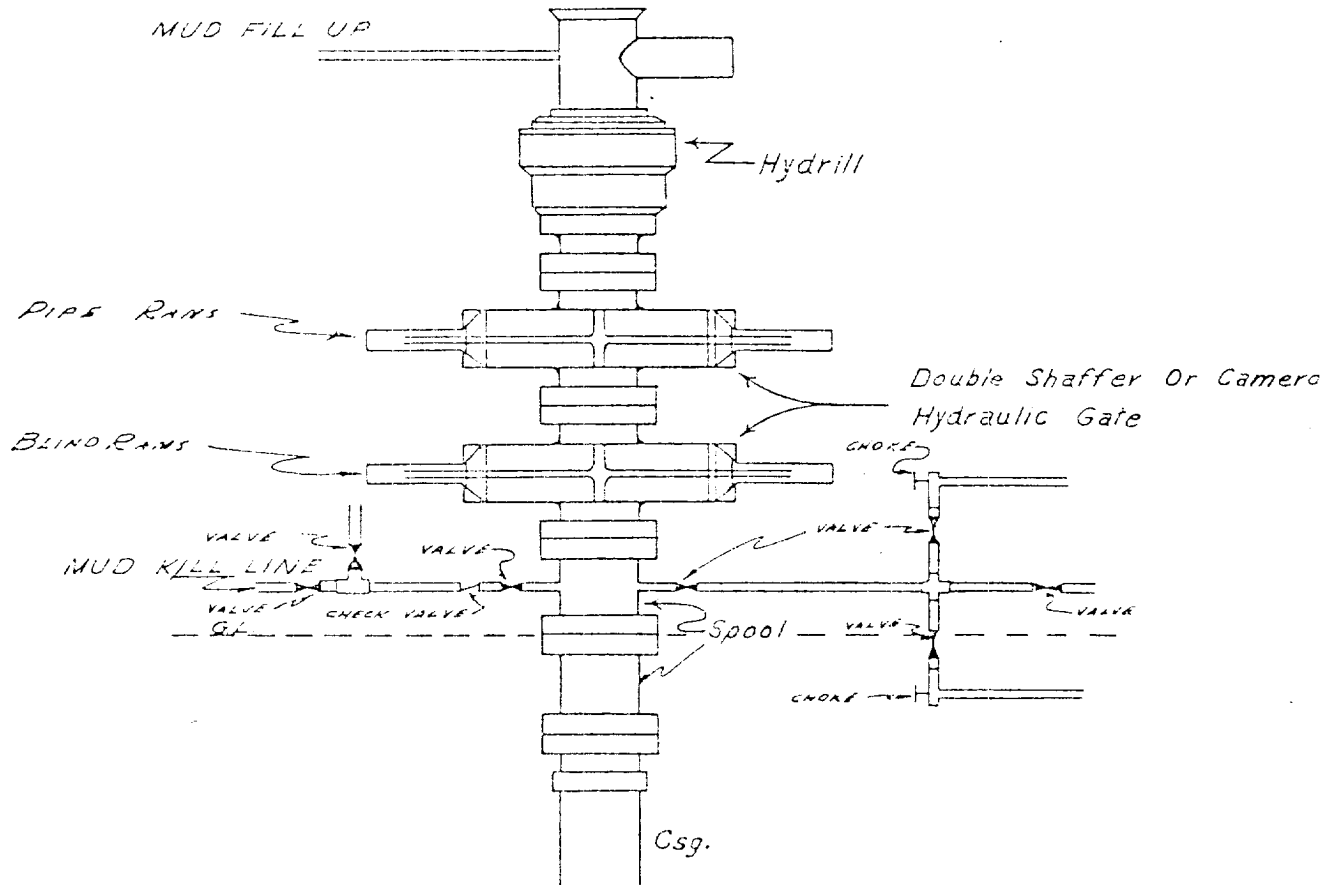
Date Surveyed  
**January 30, 1980**

Registered Professional Engineer and/or Land Surveyor

John W. West  
 Certificate No. **JOHN W. WEST 676**  
**PATRICK A. ROMERO 6868**  
**Ronald J. Eidson 3239**



CONTINENTAL OIL COMPANY  
Blow-out Preventer Specifications



NOTE:

API SERIES 900

Manual and Hydraulic controls with closing unit no less than 25' from well head.  
Remote controls on rig floor.

DUE TO SUBSTRUCTURE CLEARANCE,  
HYDRILL MAY OR MAY NOT BE USED.