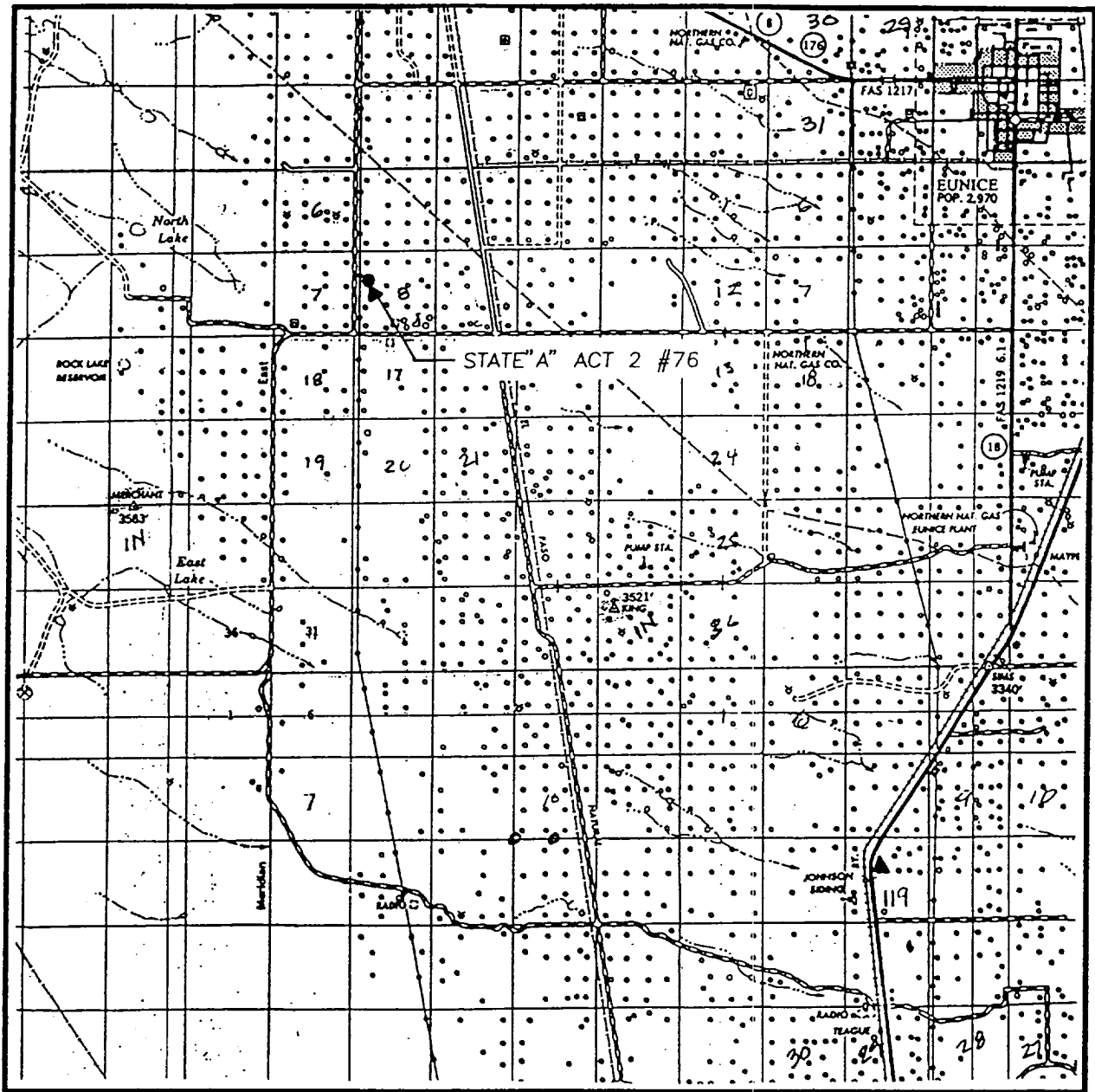


VICINITY MAP



SCALE: 1" = 2 MILES

SEC. 8 TWP. 22-S RGE. 36-E

SURVEY N.M.P.M.

COUNTY LEA

DESCRIPTION 1980' FNL & 660' FWL

ELEVATION 3601

OPERATOR RAPTOR RESOURCES, INC.

LEASE STATE "A" ACT 2

**JOHN WEST SURVEYING
HOBBS, NEW MEXICO
(505) 393-3117**