

State Lease - 5 copies  
Fee Lease - 5 copies

DISTRICT I  
1625 N. French Dr., Hobbs, NM 88240

DISTRICT II  
811 South First, Artesia, NM 88210

DISTRICT III  
1000 Rio Brazos Rd., Aztec, NM 87410

DISTRICT IV  
1220 South St. Francis Dr., Santa Fe, NM 87505

OIL CONSERVATION DIVISION  
1220 South St. Francis Drive  
Santa Fe, NM 87505

WELL API NO.  
30-025-35638

5. Indicate Type of Lease  
 STATE  FEE

6. State Oil & Gas Lease No.

WELL COMPLETION OR RECOMPLETION REPORT AND LOG

1a. Type of Well:  
 OIL WELL  GAS WELL  DRY  OTHER  
b. Type of Completion:  
 New Well  Workover  Deepen  Plug Back  Diff. Resvr.  Other

7. Lease Name or Unit Agreement Name  
Owen B

2. Name of Operator  
Apache Corporation

8. Well No.  
10

3. Address of Operator  
2000 Post Oak Blvd., Ste. 100, Houston, Texas 77056-4400 / 713-296-6000

9. Pool name or Wildcat  
Blinebry Oil & Gas (~~Pro Gas~~)

4. Well Location **BHL: L-2222/S + 706/W**  
**SUR:** Unit Letter M : 1137 Feet From The South Line and 495 Feet From The West Line  
Section 34 Township 21S Range 37E NMPM Lea County

10. Date Spudded 9/9/01 11. Date T.D. Reached 9/22/01 12. Date Compl. (Ready to Prod.) 10/5/01 13. Elevations (DF&RKB, RT, GR, etc.) 3444' GR 14. Elev. Casinghead

15. Total Depth. 6036 (MD) / 5900 (TVD) 16. Plug Back T.D. 5952 (MD) / 5817 (TVD) 17. If Multiple Compl. How Many Zones? 18. Intervals Drilled By X Rotary Tools Cable Tools

19. Producing Interval(s), of this completion - Top, Bottom, Name Blinebry 5606 - 5853 20. Was Directional Survey Made YES

21. Type Electric and Other Logs Run GR-CNL / GR-DLL 22. Was Well Cored NO

23. CASING RECORD (Report all strings set in well)

CASING SIZE	WEIGHT LB./FT.	DEPTH SET	HOLE SIZE	CEMENTING RECORD	AMOUNT PULLED
8-5/8	24#	1130	12-1/4	460 sx /Circulated 43 sx	
5-1/2	17#	6036	7-7/8	1500 sx / Circulated 157 sx	

24. LINER RECORD

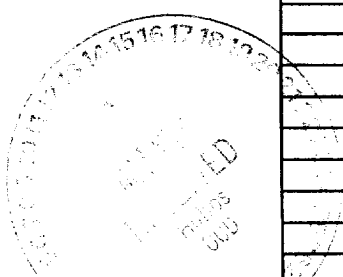
SIZE	TOP	BOTTOM	SACKS CEMENT	SCREEN

25. TUBING RECORD

SIZE	DEPTH SET	PACKER SET
2-7/8	5893	

26. Perforation record (interval, size, and number)  
Blinebry 5606-10, 28-32, 64-67, 72-76, 80-5710, 14-18, 52-66, 72-90, 93-96, 5811-43, 49-53 - 4" - 251 Holes

27. ACID, SHOT, FRACTURE, CEMENT, SQUEEZE, ETC.  
DEPTH INTERVAL AMOUNT AND KIND MATERIAL USED  
5606 - 5853 Acidize w/ 6500 gals 15% HCL  
Frac w/ 72660 gals gel & 150295# 16/30 sand



28. PRODUCTION

Date First Production	Production Method (Flowing, gas lift, pumping - Size and type pump)	Well Status (Prod. or Shut-in)
<u>10/5/01</u>	<u>Pumping - 1.5" Rod Insert</u>	<u>Producing</u>
Date of Test <u>11/1/01</u>	Hours Tested <u>24</u>	Choke Size
Flow Tubing Press.	Casing Pressure	Calculated 24-Hour Rate
	Oil - Bbl.	Gas - MCF
	Water - Bbl.	Oil Gravity - API - (Corr.) <u>36.3</u>

29. Disposition of Gas (Sold, used for fuel, vented, etc.) Sold Test Witnessed By Apache Corporation

30. List Attachments  
Logs, Directional Survey, Deviation Report, C-104

31. I hereby certify that the information shown on both sides of this form is true and complete to the best of my knowledge and belief  
Signature Debra J. Anderson Printed Name Debra J. Anderson Title Sr. Engineering Technician Date 11/06/01

*Ke*



District I  
625 N. French Drive, Hobbs, NM 88240

District II  
P O Drawer DD, Artesia, NM 88210

**OIL CONSERVATION DIVISION**  
1220 South St. Francis Drive  
Santa Fe, New Mexico 87505

Instruction on Back  
Submit to Appropriate District Office  
State Lease - 4 Copies  
Fee Lease - 3 Copies

District III  
1000 Rio Brazos Rd., Aztec, NM 87410

AMENDED REPORT

District IV  
1220 South St. Francis Dr., Santa Fe, NM 87505

**WELL LOCATION AND ACREAGE DEDICATION PLAT**

1 API Number 30-025-35638		2 Pool Code 06660		3 Pool Name Blinebry Oil and Gas	
4 Property Code 22879		5 Property Name Owen 'B'			6 Well Number 10
7 OGRID No. 000873		8 Operator Name Apache Corporation			9 Elevation 3444

<sup>10</sup> Surface Location

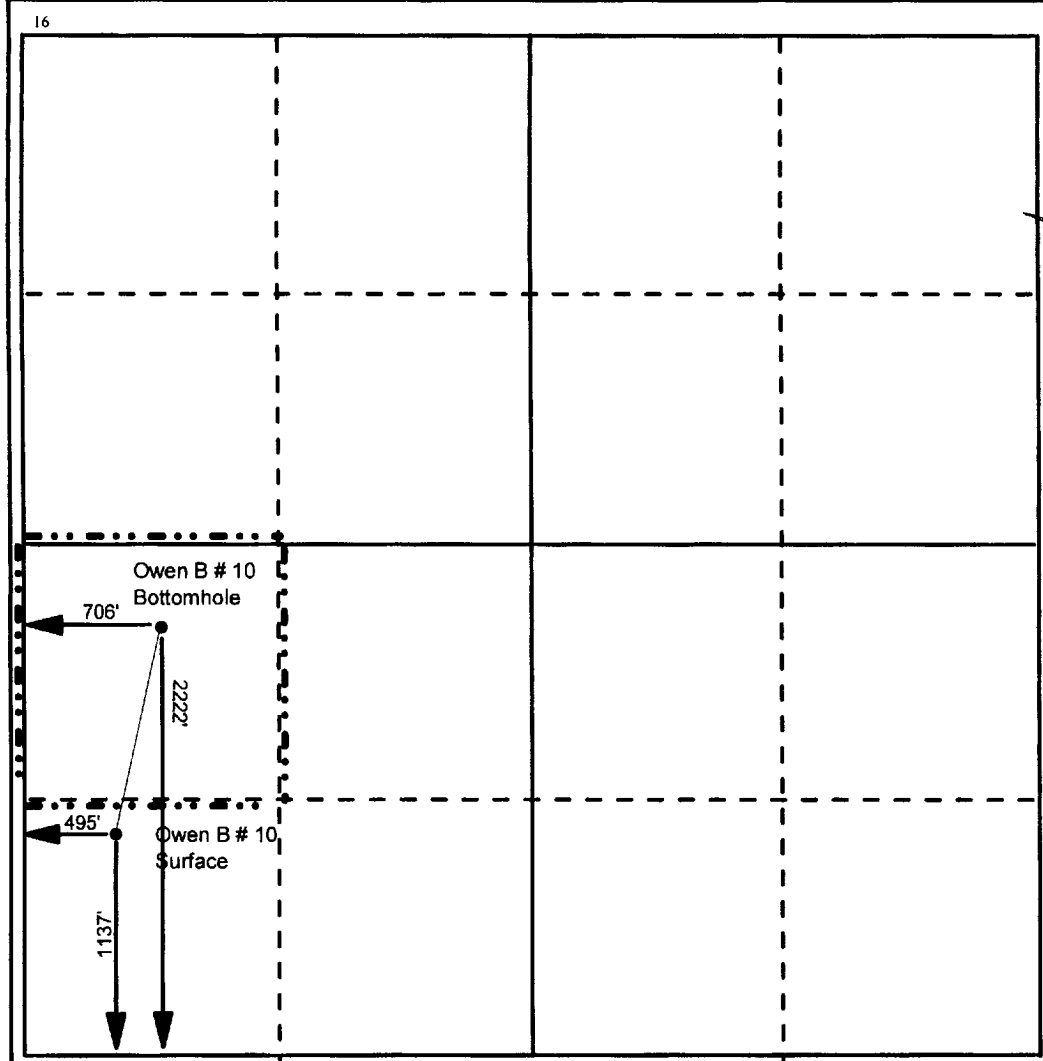
UL or Lot No.	Section	Township	Range	Lot Idn	Feet from the	North/South line	Feet from the	East/West line	County
M	34	21S	37E		1137	South	495	West	Lea

<sup>11</sup> Bottom Hole Location If Different From Surface

UL or Lot No.	Section	Township	Range	Lot Idn	Feet from the	North/South line	Feet from the	East/West line	County
L	34	21S	37E		2222	South	706	West	Lea

<sup>12</sup> Dedicated Acres 40	<sup>13</sup> Joint or Infill	<sup>14</sup> Consolidation Code	<sup>14</sup> Order No.
-------------------------------------	-------------------------------	----------------------------------	-------------------------

NO ALLOWABLE WILL BE ASSIGNED TO THIS COMPLETION UNTIL ALL INTERESTS HAVE BEEN CONSOLIDATED OR A NON-STANDARD UNIT HAS BEEN APPROVED BY THE DIVISION



<sup>17</sup> OPERATOR CERTIFICATION  
I hereby certify that the information contained herein is true and complete to the best of my knowledge and belief.

Signature: *Debra J. Anderson*  
Printed Name: Debra J. Anderson  
Title: Sr. Engineering Technician  
Date: 11/19/01

<sup>18</sup> SURVEYOR CERTIFICATION  
I hereby certify that the well location shown on this plat was plotted from field notes of actual surveys made by me or under my supervision, and that the same is true and correct to the best of my belief.

Date Surveyed: \_\_\_\_\_  
Signature and Seal of Professional Surveyor: \_\_\_\_\_

Certificate Number: \_\_\_\_\_

