

NEW MEXICO OIL CONSERVATION COMMISSION  
WELL LOCATION AND ACREAGE DEDICATION PLAT

Form C-1  
Supersedes C-128  
Effective 1-1-65

All distances must be from the outer boundaries of the Section.

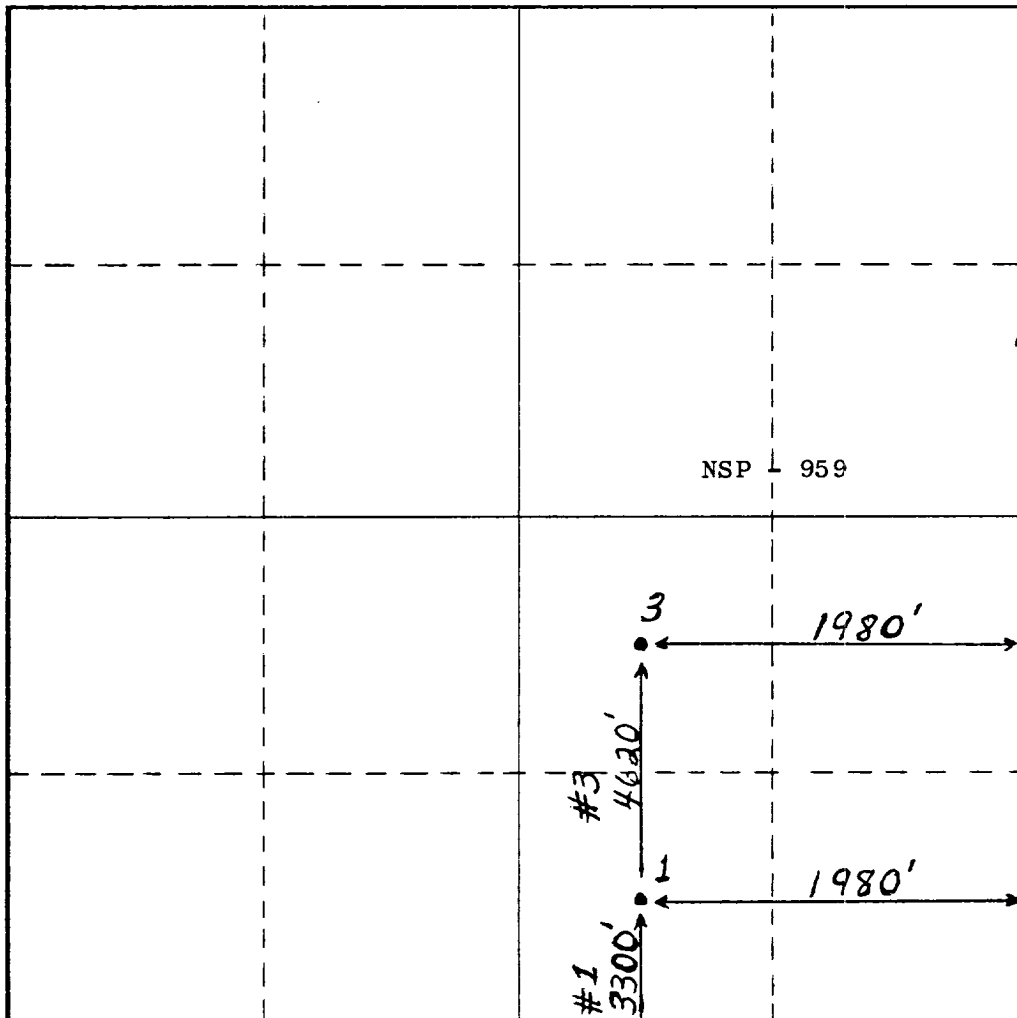
Operator <b>Atlantic Richfield Company</b>			Lease <b>State H</b>		Well No. <b>3</b>
Unit Letter <b>J</b>	Section <b>5</b>	Township <b>21S</b>	Range <b>36E</b>	County <b>Lea</b>	
Actual Footage Location of Well:					
<b>4620</b>		feet from the <b>South</b>		line and <b>1980</b>	
				feet from the <b>East</b>	
				line	
Ground Level Elev. <b>3584'</b>	Producing Formation <b>Queen Gas</b>		Pool <b>Eumont Queen Gas</b>		Dedicated Acreage: <b>160</b> Acres

1. Outline the acreage dedicated to the subject well by colored pencil or hachure marks on the plat below.
2. If more than one lease is dedicated to the well, outline each and identify the ownership thereof (both as to working interest and royalty).
3. If more than one lease of different ownership is dedicated to the well, have the interests of all owners been consolidated by communitization, unitization, force-pooling, etc?

☐ Yes ☐ No If answer is "yes," type of consolidation \_\_\_\_\_

If answer is "no," list the owners and tract descriptions which have actually been consolidated. (Use reverse side of this form if necessary.) \_\_\_\_\_

No allowable will be assigned to the well until all interests have been consolidated (by communitization, unitization, forced-pooling, or otherwise) or until a non-standard unit, eliminating such interests, has been approved by the Commission.



CERTIFICATION

I hereby certify that the information contained herein is true and complete to the best of my knowledge and belief.

Name  
*H. J. Bernard*  
Position  
Dist. Drlg. Supv.  
Company  
Atlantic Richfield Company  
Date  
August 16, 1974

I hereby certify that the well location shown on this plat was plotted from field notes of actual surveys made by me or under my supervision, and that the same is true and correct to the best of my knowledge and belief.

Date Surveyed  
Registered Professional Engineer and/or Land Surveyor

Certificate No.

Date August 12, 1986

NOTICE OF ASSIGNMENT OF ALLOWABLE TO A GAS WELL

The operator of the following well has complied with all the requirements of the Oil Conservation Division and the well is hereby assigned an allowable as shown below.

Date of Connection \_\_\_\_\_ Date of First Allowable or Allowable Change 7/22/86  
Purchaser Northern Natural Gas Pool Eumont  
Operator ARCO Oil & Gas Lease State H  
Well No. 3 Unit Letter J Sec. 5 Twp. 21 Range 36  
Dedicated Acreage 160\* Revised Acreage --- Difference ---  
Acreage Factor 1.00 Revised Acreage Factor -- Difference --  
Deliverability \_\_\_\_\_ Revised Deliverability \_\_\_\_\_ Difference \_\_\_\_\_  
A x D Factor \_\_\_\_\_ Revised A x D Factor \_\_\_\_\_ Difference \_\_\_\_\_  
ZA  
\*MWU share w/#1-0 \_\_\_\_\_ OCD District No. 1

CALCULATION OF SUPPLEMENTAL ALLOWABLE

Previous Status Adjustments.....

MONTH	% OF MO.	PREV. ALLOW.	REV. ALLOW.	PREV. PROD.	REV. PROD.	REMARKS
April						
May						
June						
July						
August						
September						
October						
November						
December						
January						
February						
March						
April						
May						
June						
July						
August						
September						
October						
November						
December						
January						
February						
March						
TOTALS						
Allowable Production Difference.....						
Schedule O/U Status.....						
Used O/U Status.....						
		Effective In		Schedule		
		Current Classification		To		

Note: All gas volumes are in MCF@15.025 psia.

R. L. STAMETS, Division Director

By \_\_\_\_\_