

## NEW MEXICO OIL CONSERVATION COMMISSION

SANTA FE, NEW MEXICO

## MISCELLANEOUS NOTICES

RECEIVED  
FEB 27 1948  
HOBB'S OFFICE

Submit this notice in triplicate to the Oil Conservation Commission or its proper agent before the work specified is to begin. A copy will be returned to the sender on which will be given the approval, with any modifications considered advisable, or the rejection by the Commission or agent, of the plan submitted. The plan as approved should be followed, and work should not begin until approval is obtained. See additional instructions in the Rules and Regulations of the Commission.

Indicate nature of notice by checking below:

NOTICE OF INTENTION TO TEST CASING SHUT-OFF		NOTICE OF INTENTION TO SHOOT OR CHEMICALLY TREAT WELL	<b>X</b>
NOTICE OF INTENTION TO CHANGE PLANS		NOTICE OF INTENTION TO PULL OR OTHERWISE ALTER CASING	
NOTICE OF INTENTION TO REPAIR WELL		NOTICE OF INTENTION TO PLUG WELL	
NOTICE OF INTENTION TO DEEPEN WELL			

Hobbs, New Mexico

February 24, 1948

Place

Date

OIL CONSERVATION COMMISSION,  
Santa Fe, New Mexico.

Gentlemen:

Following is a notice of intention to do certain work as described below at the

Shell Oil Company, Incorporated Taylor-Gless Well No. 1 in NW/4  
Company or Operator Lease  
of Sec. 3, T. 21-N, R. 37-E, N. M. P. M., Hardy Field  
Lee County.

## FULL DETAILS OF PROPOSED PLAN OF WORK

FOLLOW INSTRUCTIONS IN THE RULES AND REGULATIONS OF THE COMMISSION

5 1/2-inch casing perforated in following intervals: 6625 - 49', 6659 - 88',  
6698 - 6715' with 4 - 1/2-inch holes per foot.

- (1) Spot 500 gallons 20% LST acid down tubing. Wash opposite perforations with 200 gallons then pump remaining 300 gallons into formation.
- (2) Acidize formation through all perforations with 3000 gallons 15% LST acid.

Approved FEB 27 1948, 19\_\_\_\_  
except as follows:

Shell Oil Company, Incorporated  
Company or Operator

By G. E. Brainard, Jr.Position District Superintendent

Send communications regarding well to

Name Shell Oil Company, IncorporatedAddress Box 1457 Hobbs, New Mexico

OIL CONSERVATION COMMISSION,

By [Signature]Title GAS INSPECTOR

*Journal of Interpersonal Violence* 26(10) 1978–1995

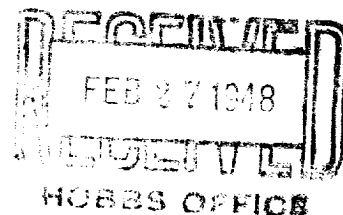
4.  $\frac{1}{2} \times \frac{1}{2} = \frac{1}{4}$  (the probability of getting heads on both coins)

1. The first step is to identify the problem or question that needs to be answered. This involves understanding the context and the specific information required.

## OIL CONSERVATION COMMISSION

Santa Fe, New Mexico

## MISCELLANEOUS REPORTS ON WELLS



Submit this report in triplicate to the Oil Conservation Commission or its proper agent within ten days after the work specified is completed. It should be signed and sworn to before a notary public for reports on beginning drilling operations, results of shooting well, results of test of casing shut off, result of plugging of well, and other important operations, even though the work was witnessed by an agent of the Commission. Reports on minor operations need not be signed and sworn to before a notary public. See additional instructions in the Rules and Regulations of the Commission.

Indicate nature of report by checking below.

REPORT ON BEGINNING DRILLING OPERATIONS		REPORT ON REPAIRING WELL	
REPORT ON RESULT OF SHOOTING OR CHEMICAL TREATMENT OF WELL	<input checked="" type="checkbox"/>	REPORT ON PULLING OR OTHERWISE ALTERING CASING	
REPORT ON RESULT OF TEST OF CASING SHUT-OFF		REPORT ON DEEPENING WELL	
REPORT ON RESULT OF PLUGGING OF WELL			

February 25, 1948

Hobbs, New Mexico

Date

Place

OIL CONSERVATION COMMISSION,  
SANTA FE, NEW MEXICO

Gentlemen:

Following is a report on the work done and the results obtained under the heading noted above at the \_\_\_\_\_

Shell Oil Company, Incorporated Taylor-Glenn Well No. 1 in the \_\_\_\_\_  
Company or Operator Lease

NW 1/4 of Sec. 3, T. 21-S, R. 37-N, N. M. P. M.,  
Hardy Field, Lee County.

The dates of this work were as follows: (1) 2-22-48 (2) 2-24-48

Notice of intention to do the work was (~~was not~~) submitted on Form C-102 on 1-24-48 19\_\_\_\_

and approval of the proposed plan was (was not) obtained. (Cross out incorrect words.)

## DETAILED ACCOUNT OF WORK DONE AND RESULTS OBTAINED

- (1) Spotted 500 gallons 20% LST acid down tubing. Washed opposite casing perforations with 200 gallons for 2 hours, spotting fresh acid over perforations each 30 minutes. Then pumped 300 gallons acid into formation in 35 minutes with maximum and final pressure of 1200 p.s.i.
- (2) Acidized formation through all casing perforations with 3000 gallons 15% LST acid in 19 minutes with initial and maximum pressures of 2700 p.s.i. and final pressure of 1050 p.s.i.

Witnessed by George Goodpasture Shell Oil Company, Incorporated Production Foreman  
Name Company Title

Subscribed and sworn before me this 25th

I hereby swear or affirm that the information given above is true and correct.

7 day of February 19 48

Name G. R. Brainard, Jr. G. R. Brainard, Jr.

Position District Superintendent

Representing Shell Oil Company, Incorporated  
Company or Operator

My commission expires My Commission Expires Sept. 6, 1950

Address Box 1457 Hobbs, New Mexico

Remarks:

APPROVED

FEB 27 1948

Don Goodpasture  
Name  
Title

[illegible][illegible]

1. *Journal of the American Medical Association*, 2000; 283: 2689-2693.

[illegible]

the 1990s, the number of people in the world who are under 15 years of age is expected to increase by 1.5 billion, from 1.1 billion in 1990 to 2.6 billion in 2010. The number of people aged 65 and over is expected to increase by 1.1 billion, from 0.3 billion in 1990 to 1.4 billion in 2010. The number of people aged 15-64 is expected to increase by 1.1 billion, from 1.7 billion in 1990 to 2.8 billion in 2010. The number of people aged 65 and over is expected to increase by 1.1 billion, from 0.3 billion in 1990 to 1.4 billion in 2010. The number of people aged 15-64 is expected to increase by 1.1 billion, from 1.7 billion in 1990 to 2.8 billion in 2010.

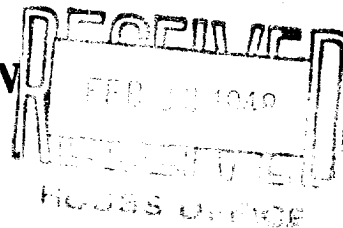
1. *Chlorophyll a* and *Chlorophyll b* were determined by the method of Arar and Collins (1971).

— *Phragmites australis* (Cav.) Trin. ex Steud. (Common reed)

## OIL CONSERVATION COMMISSION

Santa Fe, New Mexico

## MISCELLANEOUS REPORTS ON WELLS



Submit this report in triplicate to the Oil Conservation Commission or its proper agent within ten days after the work specified is completed. It should be signed and sworn to before a notary public for reports on beginning drilling operations, results of shooting well, results of test of casing shut off, result of plugging of well, and other important operations, even though the work was witnessed by an agent of the Commission. Reports on minor operations need not be signed and sworn to before a notary public. See additional instructions in the Rules and Regulations of the Commission.

Indicate nature of report by checking below.

REPORT ON BEGINNING DRILLING OPERATIONS		REPORT ON REPAIRING WELL	
REPORT ON RESULT OF SHOOTING OR CHEMICAL TREATMENT OF WELL	<b>X</b>	REPORT ON PULLING OR OTHERWISE ALTERING CASING	
REPORT ON RESULT OF TEST OF CASING SHUT-OFF		REPORT ON DEEPENING WELL	
REPORT ON RESULT OF PLUGGING OF WELL			

Hobbs, New Mexico February 16, 1948

Date

Place

OIL CONSERVATION COMMISSION,  
SANTA FE, NEW MEXICO

Gentlemen:

Following is a report on the work done and the results obtained under the heading noted above at the \_\_\_\_\_

**Shell Oil Company, Incorporated** **Taylor Glenn** Well No. **1** in the \_\_\_\_\_  
Company or Operator Lease

**NV/4** of Sec. **3**, T. **21-S**, R. **37-N**, N. M. P. M.,  
**Harty** Field, **Lee** County.

The dates of this work were as follows: **(1) 2-13-48 (2) 2-16-48**

Notice of intention to do the work was (~~submitted~~) submitted on Form C-102 on **Feb 16, 1948** 19\_\_\_\_

and approval of the proposed plan was (was not) obtained. (Cross out incorrect words.)

DETAILED ACCOUNT OF WORK DONE AND RESULTS OBTAINED

(1) Spotted 200 gallons 20% acid opposite casing perforations 6639 - 6644 feet. Pressured up to 1700 p.s.i. After 5 minutes pressure fell to 1000 p.s.i. Well flowed 177 barrels fluid in 41 hours, cut 4% to 25% BS & W. Well died.

(2) Acidized formation with 300 gallons 15% LST Acid through casing perforations from 6639 to 6644 feet in 14 minutes. Initial pressure 2800 p.s.i. Final pressure 1700 p.s.i. Hole load 152 barrels. Recovered 118 barrels fluid in 3 hours through a 24/64-inch choke.

Witnessed by **G. L. Goodpasture** **Shell Oil Company, Incorporated** **Production Foreman**  
Name Company Title

Subscribed and sworn before me this **16th**

I hereby swear or affirm that the information given above is true and correct.

day of **February** 19**48**

Name **G. E. Holmsted, Jr.**

Position **District Superintendent**

Representing **Shell Oil Company, Incorporated**  
Company or Operator

Notary Public

My commission expires **My Commission Expires Dec. 15, 1950**

Address **Box 1457 Hobbs, New Mexico**

Remarks:

APPROVED

Date

FEB 23 1948

**Reg. [Signature]**  
Name  
Title

## OIL CONSERVATION COMMISSION

Santa Fe, New Mexico

## MISCELLANEOUS REPORTS ON WELLS

FEB 23 1948

Submit this report in triplicate to the Oil Conservation Commission or its proper agent within ~~ten~~ <sup>three</sup> days after the work specified is completed. It should be signed and sworn to before a notary public for reports on beginning drilling operations, results of shooting well, results of test of casing shut off, result of plugging of well, and other important operations, even though the work was witnessed by an agent of the Commission. Reports on minor operations need not be signed and sworn to before a notary public. See additional instructions in the Rules and Regulations of the Commission.

Indicate nature of report by checking below.

REPORT ON BEGINNING DRILLING OPERATIONS		REPORT ON REPAIRING WELL	
REPORT ON RESULT OF SHOOTING OR CHEMICAL TREATMENT OF WELL	<b>X</b>	REPORT ON PULLING OR OTHERWISE ALTERING CASING	
REPORT ON RESULT OF TEST OF CASING SHUT-OFF		REPORT ON DEEPENING WELL	
REPORT ON RESULT OF PLUGGING OF WELL			

February 16, 1948

Hobbs, New Mexico

Date

Place

OIL CONSERVATION COMMISSION,  
SANTA FE, NEW MEXICO  
Gentlemen:

Following is a report on the work done and the results obtained under the heading noted above at the

Shell Oil Company, Incorporated Taylor-Gleam Well No. 1 in the

Company or Operator

NW/4 of Sec. 3, T. 21-S, R. 3-E, N. M. P. M.,

Hardy Field, Lea County.

The dates of this work were as follows: 2-7-48

Notice of intention to do the work was ~~(submitted)~~ submitted on Form C-102 on 2-16-48 19

and approval of the proposed plan was (was not) obtained. (Cross out incorrect words.)

## DETAILED ACCOUNT OF WORK DONE AND RESULTS OBTAINED

Loaded hole with oil and spotted 200 gallons 20% acid opposite 5 1/2-inch casing perforations from 6710 to 6730 feet. Held 1700 p.s.i. on perforations for 15 minutes. Pressure dropped to 1500 p.s.i. Released pressure and swabbed 47 barrels oil, cut 2/10% BS & W. Well kicked off and flowed 179 barrels fluid in 48 hours. Last cut 20% water. Titration 124,000 p.p.m. cl.

Witnessed by G. L. Goodpasture Shell Oil Company, Incorporated Production Foreman

Name

Company

Title

Subscribed and sworn before me this 16th

I hereby swear or affirm that the information given above is true and correct.

day of February 19 48

Name G. R. Brainard, Jr.

Position District Superintendent

Representing Shell Oil Company, Incorporated

Company or Operator

My commission expires My Commission Expires Sept. 16, 1950

Address Box 1457 Hobbs, New Mexico

Remarks:

APPROVED

Date FEB 23 1948

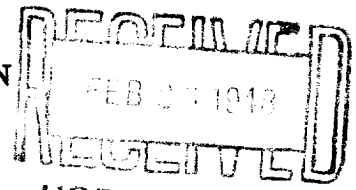
*Ray J. [Signature]*  
Name  
Title

Figure 1. The effect of the concentration of the *Agrobacterium* suspension on the transformation efficiency of *Agrobacterium* strains. The *Agrobacterium* strains were grown in the YEA medium for 24 h and then adjusted to the OD<sub>600</sub> of 0.1. The *Agrobacterium* strains were then grown in the YEA medium with the concentration of 0.1, 0.2, 0.3, 0.4, 0.5, 0.6, 0.7, 0.8, 0.9, 1.0, 1.1, 1.2, 1.3, 1.4, 1.5, 1.6, 1.7, 1.8, 1.9, 2.0, 2.1, 2.2, 2.3, 2.4, 2.5, 2.6, 2.7, 2.8, 2.9, 3.0, 3.1, 3.2, 3.3, 3.4, 3.5, 3.6, 3.7, 3.8, 3.9, 4.0, 4.1, 4.2, 4.3, 4.4, 4.5, 4.6, 4.7, 4.8, 4.9, 5.0, 5.1, 5.2, 5.3, 5.4, 5.5, 5.6, 5.7, 5.8, 5.9, 6.0, 6.1, 6.2, 6.3, 6.4, 6.5, 6.6, 6.7, 6.8, 6.9, 7.0, 7.1, 7.2, 7.3, 7.4, 7.5, 7.6, 7.7, 7.8, 7.9, 8.0, 8.1, 8.2, 8.3, 8.4, 8.5, 8.6, 8.7, 8.8, 8.9, 9.0, 9.1, 9.2, 9.3, 9.4, 9.5, 9.6, 9.7, 9.8, 9.9, 10.0, 10.1, 10.2, 10.3, 10.4, 10.5, 10.6, 10.7, 10.8, 10.9, 11.0, 11.1, 11.2, 11.3, 11.4, 11.5, 11.6, 11.7, 11.8, 11.9, 12.0, 12.1, 12.2, 12.3, 12.4, 12.5, 12.6, 12.7, 12.8, 12.9, 13.0, 13.1, 13.2, 13.3, 13.4, 13.5, 13.6, 13.7, 13.8, 13.9, 14.0, 14.1, 14.2, 14.3, 14.4, 14.5, 14.6, 14.7, 14.8, 14.9, 15.0, 15.1, 15.2, 15.3, 15.4, 15.5, 15.6, 15.7, 15.8, 15.9, 16.0, 16.1, 16.2, 16.3, 16.4, 16.5, 16.6, 16.7, 16.8, 16.9, 17.0, 17.1, 17.2, 17.3, 17.4, 17.5, 17.6, 17.7, 17.8, 17.9, 18.0, 18.1, 18.2, 18.3, 18.4, 18.5, 18.6, 18.7, 18.8, 18.9, 19.0, 19.1, 19.2, 19.3, 19.4, 19.5, 19.6, 19.7, 19.8, 19.9, 20.0, 20.1, 20.2, 20.3, 20.4, 20.5, 20.6, 20.7, 20.8, 20.9, 21.0, 21.1, 21.2, 21.3, 21.4, 21.5, 21.6, 21.7, 21.8, 21.9, 22.0, 22.1, 22.2, 22.3, 22.4, 22.5, 22.6, 22.7, 22.8, 22.9, 23.0, 23.1, 23.2, 23.3, 23.4, 23.5, 23.6, 23.7, 23.8, 23.9, 24.0, 24.1, 24.2, 24.3, 24.4, 24.5, 24.6, 24.7, 24.8, 24.9, 25.0, 25.1, 25.2, 25.3, 25.4, 25.5, 25.6, 25.7, 25.8, 25.9, 26.0, 26.1, 26.2, 26.3, 26.4, 26.5, 26.6, 26.7, 26.8, 26.9, 27.0, 27.1, 27.2, 27.3, 27.4, 27.5, 27.6, 27.7, 27.8, 27.9, 28.0, 28.1, 28.2, 28.3, 28.4, 28.5, 28.6, 28.7, 28.8, 28.9, 29.0, 29.1, 29.2, 29.3, 29.4, 29.5, 29.6, 29.7, 29.8, 29.9, 30.0, 30.1, 30.2, 30.3, 30.4, 30.5, 30.6, 30.7, 30.8, 30.9, 31.0, 31.1, 31.2, 31.3, 31.4, 31.5, 31.6, 31.7, 31.8, 31.9, 32.0, 32.1, 32.2, 32.3, 32.4, 32.5, 32.6, 32.7, 32.8, 32.9, 33.0, 33.1, 33.2, 33.3, 33.4, 33.5, 33.6, 33.7, 33.8, 33.9, 34.0, 34.1, 34.2, 34.3, 34.4, 34.5, 34.6, 34.7, 34.8, 34.9, 35.0, 35.1, 35.2, 35.3, 35.4, 35.5, 35.6, 35.7, 35.8, 35.9, 36.0, 36.1, 36.2, 36.3, 36.4, 36.5, 36.6, 36.7, 36.8, 36.9, 37.0, 37.1, 37.2, 37.3, 37.4, 37.5, 37.6, 37.7, 37.8, 37.9, 38.0, 38.1, 38.2, 38.3, 38.4, 38.5, 38.6, 38.7, 38.8, 38.9, 39.0, 39.1, 39.2, 39.3, 39.4, 39.5, 39.6, 39.7, 39.8, 39.9, 40.0, 40.1, 40.2, 40.3, 40.4, 40.5, 40.6, 40.7, 40.8, 40.9, 41.0, 41.1, 41.2, 41.3, 41.4, 41.5, 41.6, 41.7, 41.8, 41.9, 42.0, 42.1, 42.2, 42.3, 42.4, 42.5, 42.6, 42.7, 42.8, 42.9, 43.0, 43.1, 43.2, 43.3, 43.4, 43.5, 43.6, 43.7, 43.8, 43.9, 44.0, 44.1, 44.2, 44.3, 44.4, 44.5, 44.6, 44.7, 44.8, 44.9, 45.0, 45.1, 45.2, 45.3, 45.4, 45.5, 45.6, 45.7, 45.8, 45.9, 46.0, 46.1, 46.2, 46.3, 46.4, 46.5, 46.6, 46.7, 46.8, 46.9, 47.0, 47.1, 47.2, 47.3, 47.4, 47.5, 47.6, 47.7, 47.8, 47.9, 48.0, 48.1, 48.2, 48.3, 48.4, 48.5, 48.6, 48.7, 48.8, 48.9, 49.0, 49.1, 49.2, 49.3, 49.4, 49.5, 49.6, 49.7, 49.8, 49.9, 50.0, 50.1, 50.2, 50.3, 50.4, 50.5, 50.6, 50.7, 50.8, 50.9, 51.0, 51.1, 51.2, 51.3, 51.4, 51.5, 51.6, 51.7, 51.8, 51.9, 52.0, 52.1, 52.2, 52.3, 52.4, 52.5, 52.6, 52.7, 52.8, 52.9, 53.0, 53.1, 53.2, 53.3, 53.4, 53.5, 53.6, 53.7, 53.8, 53.9, 54.0, 54.1, 54.2, 54.3, 54.4, 54.5, 54.6, 54.7, 54.8, 54.9, 55.0, 55.1, 55.2, 55.3, 55.4, 55.5, 55.6, 55.7, 55.8, 55.9, 56.0, 56.1, 56.2, 56.3, 56.4, 56.5, 56.6, 56.7, 56.8, 56.9, 57.0, 57.1, 57.2, 57.3, 57.4, 57.5, 57.6, 57.7, 57.8, 57.9, 58.0, 58.1, 58.2, 58.3, 58.4, 58.5, 58.6, 58.7, 58.8, 58.9, 59.0, 59.1, 59.2, 59.3, 59.4, 59.5, 59.6, 59.7, 59.8, 59.9, 60.0, 60.1, 60.2, 60.3, 60.4, 60.5, 60.6, 60.7, 60.8, 60.9, 61.0, 61.1, 61.2, 61.3, 61.4, 61.5, 61.6, 61.7, 61.8, 61.9, 62.0, 62.1, 62.2, 62.3, 62.4, 62.5, 62.6, 62.7, 62.8, 62.9, 63.0, 63.1, 63.2, 63.3, 63.4, 63.5, 63.6, 63.7, 63.8, 63.9, 64.0, 64.1, 64.2, 64.3, 64.4, 64.5, 64.6, 64.7, 64.8, 64.9, 65.0, 65.1, 65.2, 65.3, 65.4, 65.5, 65.6, 65.7, 65.8, 65.9, 66.0, 66.1, 66.2, 66.3, 66.4, 66.5, 66.6, 66.7, 66.8, 66.9, 67.0, 67.1, 67.2, 67.3, 67.4, 67.5, 67.6, 67.7, 67.8, 67.9, 68.0, 68.1

— *Journal of the American Medical Association*, 1997

Figure 1. The effect of the number of trials on the number of correct responses. The number of correct responses was significantly higher than the number of incorrect responses in all cases. The number of correct responses was significantly higher than the number of incorrect responses in all cases. The number of correct responses was significantly higher than the number of incorrect responses in all cases.

**NEW MEXICO OIL CONSERVATION COMMISSION**  
**SANTA FE, NEW MEXICO**  
**MISCELLANEOUS NOTICES**



Submit this notice in triplicate to the Oil Conservation Commission or its proper agent before the work specified herein begins. A copy will be returned to the sender on which will be given the approval, with any modifications considered advisable, or the rejection by the Commission or agent, of the plan submitted. The plan as approved should be followed, and work should not begin until approval is obtained. See additional instructions in the Rules and Regulations of the Commission.

Indicate nature of notice by checking below:

NOTICE OF INTENTION TO TEST CASING SHUT-OFF		NOTICE OF INTENTION TO SHOOT OR CHEMICALLY TREAT WELL	<b>X</b>
NOTICE OF INTENTION TO CHANGE PLANS		NOTICE OF INTENTION TO PULL OR OTHERWISE ALTER CASING	
NOTICE OF INTENTION TO REPAIR WELL		NOTICE OF INTENTION TO PLUG WELL	
NOTICE OF INTENTION TO DEEPEN WELL			

Hobbs, New Mexico

February 16, 1948

Place

Date

OIL CONSERVATION COMMISSION,  
 Santa Fe, New Mexico.

Gentlemen:

Following is a notice of intention to do certain work as described below at the \_\_\_\_\_  
Shell Oil Company, Incorporated Taylor-Gless Well No. 1 in NW/4  
 Company or Operator Lease  
 of Sec. 3, T. 21-S, R. 37-S, N. M. P. M., Hardy Field  
Lee County.

**FULL DETAILS OF PROPOSED PLAN OF WORK**

FOLLOW INSTRUCTIONS IN THE RULES AND REGULATIONS OF THE COMMISSION

- (1) Spot 200 gallons 20% acid opposite 5 1/2-inch casing perforations from 6639 to 6644 feet.
- (2) Acidize formation with 300 gallons 15% LST acid through casing perforations from 6639 to 6644 feet.

FEB 25 1948

Approved \_\_\_\_\_, 19\_\_\_\_  
 except as follows:

Shell Oil Company, Incorporated  
 Company or Operator  
 By G. R. Brainard, Jr.  
 Position District Superintendent  
 Send communications regarding well to  
 Name Shell Oil Company, Incorporated  
 Address Box 1457 Hobbs, New Mexico

OIL CONSERVATION COMMISSION,  
 By W. J. [Signature]  
 Title \_\_\_\_\_



1. *Pharmaceuticals* (1997) 10: 115-120.

Figure 1. The effect of the number of trials on the number of correct responses. The number of correct responses was significantly higher than the number of incorrect responses in all cases. The number of correct responses was significantly higher than the number of incorrect responses in all cases. The number of correct responses was significantly higher than the number of incorrect responses in all cases.

**NEW MEXICO OIL CONSERVATION COMMISSION**  
**SANTA FE, NEW MEXICO**  
**MISCELLANEOUS NOTICES**

**RECEIVED**  
 FEB 23 1948  
**RECEIVED**

Submit this notice in triplicate to the Oil Conservation Commission or its proper agent before the work specified is to begin. A copy will be returned to the sender on which will be given the approval, with any modifications considered advisable, or the rejection by the Commission or agent, of the plan submitted. The plan as approved should be followed, and work should not begin until approval is obtained. See additional instructions in the Rules and Regulations of the Commission.

**HOBBS OFFICE**

Indicate nature of notice by checking below:

NOTICE OF INTENTION TO TEST CASING SHUT-OFF		NOTICE OF INTENTION TO SHOOT OR CHEMICALLY TREAT WELL	<b>X</b>
NOTICE OF INTENTION TO CHANGE PLANS		NOTICE OF INTENTION TO PULL OR OTHERWISE ALTER CASING	
NOTICE OF INTENTION TO REPAIR WELL		NOTICE OF INTENTION TO PLUG WELL	
NOTICE OF INTENTION TO DEEPEN WELL			

Hobbs, New Mexico      February 16, 1948

Place

Date

OIL CONSERVATION COMMISSION,  
 Santa Fe, New Mexico.

Gentlemen:

Following is a notice of intention to do certain work as described below at the \_\_\_\_\_

Shell Oil Company, Inc.      Taylor-Glenn      Well No. 1 in WM/4  
 Company or Operator      Lease  
 of Sec. 3, T. 21-S, R. 37-S, N. M. P. M., Hardy      Field.  
Lea      County.

**FULL DETAILS OF PROPOSED PLAN OF WORK**

FOLLOW INSTRUCTIONS IN THE RULES AND REGULATIONS OF THE COMMISSION

**Spot 200 gallons 20% acid opposite 5 1/2-inch casing perforations from 6710 to 6730 feet.**

Approved \_\_\_\_\_, 19\_\_\_\_  
 except as follows:

OIL CONSERVATION COMMISSION,  
 By [Signature]  
 Title \_\_\_\_\_

Shell Oil Company, Incorporated  
 Company or Operator  
 By G. E. Brainerd, Jr.      [Signature]  
 Position District Superintendent  
 Send communications regarding well to  
 Name Shell Oil Company, Incorporated  
 Address Box 1457 Hobbs, New Mexico

1. The first part of the paper is devoted to the

study of the properties of the function

$f(x) = \sum_{n=0}^{\infty} \frac{x^n}{n!}$

which is defined for all real values of  $x$ . It is shown that this function is continuous and differentiable for all  $x$ , and that its derivative is equal to itself. This property is characteristic of the exponential function.

2. In the second part, we consider the function

$f(x) = \sum_{n=0}^{\infty} \frac{x^n}{n!} e^{-x}$  which is defined for all real values of  $x$ . It is shown that this function is continuous and differentiable for all  $x$ , and that its derivative is equal to itself.

3. In the third part, we consider the function

$f(x) = \sum_{n=0}^{\infty} \frac{x^n}{n!} e^{-x} \cos(x)$  which is defined for all real values of  $x$ . It is shown that this function is continuous and differentiable for all  $x$ , and that its derivative is equal to itself.

4. In the fourth part, we consider the function

$f(x) = \sum_{n=0}^{\infty} \frac{x^n}{n!} e^{-x} \sin(x)$

which is defined for all real values of  $x$ . It is shown that this function is continuous and differentiable for all  $x$ , and that its derivative is equal to itself.

5. In the fifth part, we consider the function

$f(x) = \sum_{n=0}^{\infty} \frac{x^n}{n!} e^{-x} \cos^2(x)$

which is defined for all real values of  $x$ . It is shown that this function is continuous and differentiable for all  $x$ , and that its derivative is equal to itself.

6. In the sixth part, we consider the function

$f(x) = \sum_{n=0}^{\infty} \frac{x^n}{n!} e^{-x} \sin^2(x)$

which is defined for all real values of  $x$ . It is shown that this function is continuous and differentiable for all  $x$ , and that its derivative is equal to itself.

7. In the seventh part, we consider the function

$f(x) = \sum_{n=0}^{\infty} \frac{x^n}{n!} e^{-x} \cos^3(x)$

which is defined for all real values of  $x$ . It is shown that this function is continuous and differentiable for all  $x$ , and that its derivative is equal to itself.

8. In the eighth part, we consider the function

$f(x) = \sum_{n=0}^{\infty} \frac{x^n}{n!} e^{-x} \sin^3(x)$

which is defined for all real values of  $x$ . It is shown that this function is continuous and differentiable for all  $x$ , and that its derivative is equal to itself.

9. In the ninth part, we consider the function

$f(x) = \sum_{n=0}^{\infty} \frac{x^n}{n!} e^{-x} \cos^4(x)$

which is defined for all real values of  $x$ . It is shown that this function is continuous and differentiable for all  $x$ , and that its derivative is equal to itself.

10. In the tenth part, we consider the function

$f(x) = \sum_{n=0}^{\infty} \frac{x^n}{n!} e^{-x} \sin^4(x)$

which is defined for all real values of  $x$ . It is shown that this function is continuous and differentiable for all  $x$ , and that its derivative is equal to itself.

11. In the eleventh part, we consider the function

$f(x) = \sum_{n=0}^{\infty} \frac{x^n}{n!} e^{-x} \cos^5(x)$

which is defined for all real values of  $x$ . It is shown that this function is continuous and differentiable for all  $x$ , and that its derivative is equal to itself.

12. In the twelfth part, we consider the function

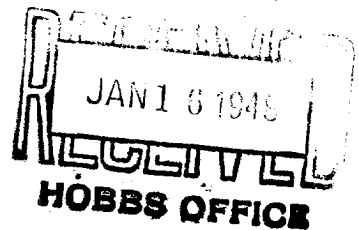
$f(x) = \sum_{n=0}^{\infty} \frac{x^n}{n!} e^{-x} \sin^5(x)$

which is defined for all real values of  $x$ . It is shown that this function is continuous and differentiable for all  $x$ , and that its derivative is equal to itself.

## OIL CONSERVATION COMMISSION

Santa Fe, New Mexico

## MISCELLANEOUS REPORTS ON WELLS



DUPLICATE

Submit this report in triplicate to the Oil Conservation Commission or its proper agent within ten days after the work specified is completed. It should be signed and sworn to before a notary public for reports on beginning drilling operations, results of shooting well, results of test of casing shut off, result of plugging of well, and other important operations, even though the work was witnessed by an agent of the Commission. Reports on minor operations need not be signed and sworn to before a notary public. See additional instructions in the Rules and Regulations of the Commission.

Indicate nature of report by checking below.

REPORT ON BEGINNING DRILLING OPERATIONS		REPORT ON REPAIRING WELL	
REPORT ON RESULT OF SHOOTING OR CHEMICAL TREATMENT OF WELL		REPORT ON PULLING OR OTHERWISE ALTERING CASING	
REPORT ON RESULT OF TEST OF CASING SHUT-OFF	<b>X</b>	REPORT ON DEEPENING WELL	
REPORT ON RESULT OF PLUGGING OF WELL			

January 12, 1948

Date

Hobbs, New Mexico

Place

OIL CONSERVATION COMMISSION,  
SANTA FE, NEW MEXICO.

Gentlemen:

Following is a report on the work done and the results obtained under the heading noted above at the \_\_\_\_\_

Shell Oil Company, Inc. Taylor-Glenn Well No. 1 in the  
Company or Operator Lease  
MW/L of Sec. 3, T. 21-S, R. 37-E, N. M. P. M.,  
Hardy Field, Lea County.

The dates of this work were as follows: 1-7-48

Notice of intention to do the work was ~~submitted~~ submitted on Form C-102 on 1-12-48 19\_\_\_\_  
and approval of the proposed plan was (was not) obtained. (Cross out incorrect words.)

## DETAILED ACCOUNT OF WORK DONE AND RESULTS OBTAINED

After 30 hours W.O.C. drilled cement from 6580 to 6810. Washed to 7972. Tested  
5½" casing with 1500 psi. water pressure for 30 minutes. Held O.K.

Witnessed by G. L. Goodpasture Shell Oil Company, Inc. Production Foreman  
Name Company Title

Subscribed and sworn before me this 12th

I hereby swear or affirm that the information given above is true and correct.

day of January, 19 48Name M. C. BrunnerPosition District SuperintendentRepresenting Shell Oil Company, Inc.  
Company or OperatorMy commission expires My Commission Expires Sept. 16, 1950Address Box 1457, Hobbs, New Mexico

Remarks:

APPROVED

Date JAN 16 1948

Roy Yarbrough  
Name  
OIL & GAS INSPECTOR  
Title

## NEW MEXICO OIL CONSERVATION COMMISSION

SANTA FE, NEW MEXICO

## MISCELLANEOUS NOTICES

JAN 16 1948

HOBBS OFFICE

Submit this notice in triplicate to the Oil Conservation Commission or its proper agent before the work specified is to begin. A copy will be returned to the sender on which will be given the approval, with any modifications considered advisable, or the rejection by the Commission or agent, of the plan submitted. The plan as approved should be followed, and work should not begin until approval is obtained. See additional instructions in the Rules and Regulations of the Commission.

Indicate nature of notice by checking below:

NOTICE OF INTENTION TO TEST CASING SHUT-OFF	<input checked="" type="checkbox"/>	NOTICE OF INTENTION TO SHOOT OR CHEMICALLY TREAT WELL	
NOTICE OF INTENTION TO CHANGE PLANS		NOTICE OF INTENTION TO PULL OR OTHERWISE ALTER CASING	
NOTICE OF INTENTION TO REPAIR WELL		NOTICE OF INTENTION TO PLUG WELL	
NOTICE OF INTENTION TO DEEPEN WELL			

Hobbs, New Mexico

January 12, 1948

Place

Date

OIL CONSERVATION COMMISSION,  
Santa Fe, New Mexico.

Gentlemen:

Following is a notice of intention to do certain work as described below at the \_\_\_\_\_

Shell Oil Company, Inc. Taylor-Glenn Well No. 1 in NW/4  
Company or Operator Lease  
of Sec. 3, T. 21 S., R. 37 E., N. M. P. M., Hardy Field  
Lea County.

## FULL DETAILS OF PROPOSED PLAN OF WORK

## FOLLOW INSTRUCTIONS IN THE RULES AND REGULATIONS OF THE COMMISSION

Ran 5½ inch casing to 8060 feet and cemented with 175 sacks cement. Plug down at 4:00 P. M. 1-4-48. After 12 hours WOC, ran temperature survey. Found top of cement at 6810 feet. Perf 5½" casing at 6800' with 4-½" holes. Recemented with 500 sacks cement. After 12 hours W.O.C., ran temperature survey and found top of cement at 2915 feet. After 30 hours W.O.C will drill out to 8125 and test 5½" casing and cement job.

Approved \_\_\_\_\_, 19\_\_\_\_  
except as follows:

Shell Oil Company, Inc.

Company or Operator

By M. C. Brunner *M. C. Brunner*

Position District Superintendent

Send communications regarding well to

Name Shell Oil Company, Inc.

Address Box 1457, Hobbs, New Mexico

OIL CONSERVATION COMMISSION,

By *Ray Yank*

Title \_\_\_\_\_

OIL &amp; GAS INSPECTOR

1. The first part of the document is a letter from the

author to the editor.

2. The second part is a letter from the editor to the

author, in which the editor expresses his appreciation for the author's contribution to the journal and his hope that the author will continue to contribute in the future.

3. The third part is a letter from the author to the editor,

in which the author expresses his appreciation for the editor's response to his letter and his hope that the editor will continue to support his work. The author also expresses his hope that the journal will continue to be a valuable source of information for the community.

4. The fourth part is a letter from the editor to the author,

in which the editor expresses his

appreciation for the author's

contribution to the journal and his hope that the author will continue to contribute in the future. The editor also expresses his hope that the journal will continue to be a valuable source of information for the community.

5. The fifth part is a letter from the author to the editor,

in which the author expresses his

appreciation for the editor's response to his letter and his hope that the editor will continue to support his work. The author also expresses his hope that the journal will continue to be a valuable source of information for the community.

6. The sixth part is a letter from the editor to the author,

in which the editor expresses his appreciation for the author's contribution to the journal and his hope that the author will continue to contribute in the future. The editor also expresses his hope that the journal will continue to be a valuable source of information for the community.

7. The seventh part is a letter from the author to the editor,

in which the author expresses his

appreciation for the editor's response to his letter and his hope that the editor will continue to support his work. The author also expresses his hope that the journal will continue to be a valuable source of information for the community.

8. The eighth part is a letter from the editor to the author,

in which the editor expresses his

appreciation for the author's contribution to the journal and his hope that the author will continue to contribute in the future. The editor also expresses his hope that the journal will continue to be a valuable source of information for the community.

## OIL CONSERVATION COMMISSION

Santa Fe, New Mexico

## MISCELLANEOUS REPORTS ON WELLS

OCT 30 1947

HOBBS OFFICE

Submit this report in triplicate to the Oil Conservation Commission or its proper agent within ten days after the work specified is completed. It should be signed and sworn to before a notary public for reports on beginning drilling operations, results of shooting well, results of test of casing shut off, result of plugging of well, and other important operations, even though the work was witnessed by an agent of the Commission. Reports on minor operations need not be signed and sworn to before a notary public. See additional instructions in the Rules and Regulations of the Commission.

Indicate nature of report by checking below.

REPORT ON BEGINNING DRILLING OPERATIONS		REPORT ON REPAIRING WELL	
REPORT ON RESULT OF SHOOTING OR CHEMICAL TREATMENT OF WELL		REPORT ON PULLING OR OTHERWISE ALTERING CASING	
REPORT ON RESULT OF TEST OF CASING SHUT-OFF	<b>X</b>	REPORT ON DEEPENING WELL	
REPORT ON RESULT OF PLUGGING OF WELL			

October 27th, 1947

Hobbs, New Mexico

Date

Place

OIL CONSERVATION COMMISSION,  
SANTA FE, NEW MEXICO.

Gentlemen:

Following is a report on the work done and the results obtained under the heading noted above at the \_\_\_\_\_

Shell Oil Company, Incorporated Taylor-Glenn Well No. 1 in the \_\_\_\_\_  
Company or Operator Lease

NV/4 of Sec. 3, T. 21-S, R. 37-E, N. M. P. M.,  
Wildcat Field, Lea County.

The dates of this work were as follows: October 24, 1947

Notice of intention to do the work was (~~was not~~) submitted on Form C-102 on October 24, 1947 19\_\_\_\_  
and approval of the proposed plan was (was not) obtained. (Cross out incorrect words.)

## DETAILED ACCOUNT OF WORK DONE AND RESULTS OBTAINED

Tested 8 5/8-inch casing with 1000 psi water pressure for 30 minutes. Held OK.

Drilled cement and shoe. Tested water shut off with 930 p.s.i. water pressure for 30 minutes. Held OK.

Witnessed by J. K. Perehouse Shell Oil Company, Incorporated Production Foreman  
Name Company Title

Subscribed and sworn before me this 27th

I hereby swear or affirm that the information given above is true and correct.

day of October, 19 47

Name M. C. Brunner

Position District Superintendent

Representing Shell Oil Company, Incorporated  
Company or Operator

Address Box 1457 Hobbs, New Mexico

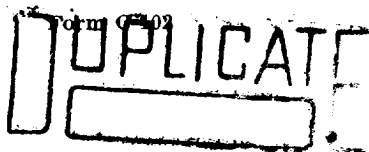
Notary Public

My commission expires My Commission Expires Sept 16 1950

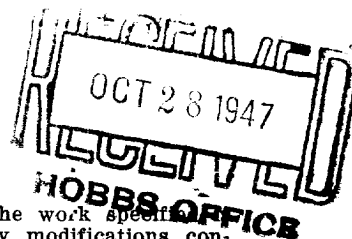
Remarks:

APPROVED  
OCT 30 1947

Name \_\_\_\_\_  
OIL & GAS INSPECTOR  
Title \_\_\_\_\_



MEXICO OIL CONSERVATION COMMISSION  
Santa Fe, New Mexico



MISCELLANEOUS NOTICES

Submit this notice in triplicate to the Oil Conservation Commission or its proper agent before the work specified to begin. A copy will be returned to the sender on which will be given the approval, with any modifications considered advisable, or the rejection by the Commission or agent, of the plan submitted. The plan as approved should be followed, and work should not begin until approval is obtained. See additional instructions in the Rules and Regulations of the Commission.

Indicate nature of notice by checking below:

NOTICE OF INTENTION TO TEST CASING SHUT-OFF	<input checked="" type="checkbox"/>	NOTICE OF INTENTION TO SHOOT OR CHEMICALLY TREAT WELL	
NOTICE OF INTENTION TO CHANGE PLANS		NOTICE OF INTENTION TO PLUG OR OTHERWISE ALTER CASING	
NOTICE OF INTENTION TO REPAIR WELL		NOTICE OF INTENTION TO PLUG WELL	
NOTICE OF INTENTION TO DEEPEN WELL			

Hobbs, New Mexico October 24, 1947

Place

Date

OIL CONSERVATION COMMISSION,  
Santa Fe, New Mexico.

Gentlemen:

Following is a notice of intention to do certain work as described below at the

Shell Oil Company, Incorporated Taylor-Glenn Well No. 1 in NW/4

of Sec. 3, T. 21-S, R. 37-E, N. M. P. M., Wildcat Field,  
Lea County.

FULL DETAILS OF PROPOSED PLAN OF WORK

FOLLOW INSTRUCTIONS IN THE RULES AND REGULATIONS OF THE COMMISSION

Run 89 joints 8 5/8-inch casing and 2 joints 10 3/4-inch casing to 3879 feet and cemented with 3400 sacks of 3/4 aquagel and 900 sacks regular cement. Circulated out 1300 sacks. Plug down at 1:30 P.M. 10-22-47. Will test casing at 1:30 P.M. 10-23-47.

Approved OCT 28 1947, 19  
except as follows:

Shell Oil Company, Incorporated  
Company or Operator

By M. C. Brunner

Position District Superintendent  
Send communications regarding well to

OIL CONSERVATION COMMISSION

Title May 4, 1947  
OIL & GAS INSPECTOR

By

Name Shell Oil Company, Incorporated

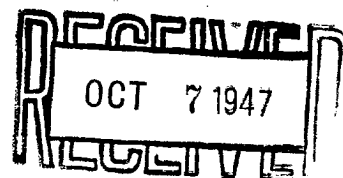
Address Box 1557 Hobbs, New Mexico





## OIL CONSERVATION COMMISSION

Santa Fe, New Mexico



## MISCELLANEOUS REPORTS ON WELLS

Submit this report in triplicate to the Oil Conservation Commission or its proper agent within ten days after the work specified is completed. It should be signed and sworn to before a notary public for reports on beginning drilling operations, results of shooting well, results of test of casing shut off, result of plugging of well, and other important operations, even though the work was witnessed by an agent of the Commission. Reports on minor operations need not be signed and sworn to before a notary public. See additional instructions in the Rules and Regulations of the Commission.

Indicate nature of report by checking below.

REPORT ON BEGINNING DRILLING OPERATIONS	<input checked="" type="checkbox"/>	REPORT ON REPAIRING WELL	
REPORT ON RESULT OF SHOOTING OR CHEMICAL TREATMENT OF WELL		REPORT ON PULLING OR OTHERWISE ALTERING CASING	
REPORT ON RESULT OF TEST OF CASING SHUT-OFF		REPORT ON DEEPENING WELL	
REPORT ON RESULT OF PLUGGING OF WELL			

September 29, 1947

Hobbs, New Mexico

Date

Place

OIL CONSERVATION COMMISSION,  
SANTA FE, NEW MEXICO.

Gentlemen:

Following is a report on the work done and the results obtained under the heading noted above at the \_\_\_\_\_

Shell Oil Company, Incorporated Waylor-GlenWell No. 1 in the \_\_\_\_\_

Company or Operator

Lease

WV/4 of Sec. 3, T. 21-S, R. 37-E, N. M. P. M.,  
Hardy Field, Lee County.

The dates of this work were as follows: September 29, 1947Notice of intention to do the work was (~~xxxxx~~) submitted on Form C-102 on Sept 17, 19 47and approval of the proposed plan was (~~xxxxxx~~) obtained. (Cross out incorrect words.)

## DETAILED ACCOUNT OF WORK DONE AND RESULTS OBTAINED

Spudded 10:45 P.M. 9-29-47.

Witnessed by John Pevaboue Shell Oil Company, Incorporated Production Foreman  
Name Company Title

Subscribed and sworn before me this 29th

I hereby swear or affirm that the information given above is true and correct.

day of September, 19 47Name M. C. BrunnerPosition District SuperintendentRepresenting Shell Oil Company, Incorporated  
Company or OperatorMy commission expires My Commission Expires Sept. 10, 1950Address Box 1457 Hobbs, New Mexico

Remarks:

APPROVED

Date Oct 7 1947

Roy Yarbrough  
Name

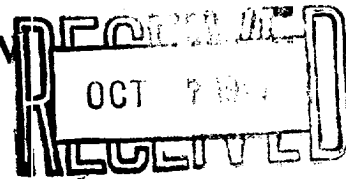
OIL &amp; GAS INSPECTOR

## OIL CONSERVATION COMMISSION

Santa Fe, New Mexico

DUPLICATE

## MISCELLANEOUS REPORTS ON WELLS



Submit this report in triplicate to the Oil Conservation Commission or its proper agent within ten days after the work specified is completed. It should be signed and sworn to before a notary public for reports on beginning drilling operations, results of shooting well, results of test of casing shut off, result of plugging of well, and other important operations, even though the work was witnessed by an agent of the Commission. Reports on minor operations need not be signed and sworn to before a notary public. See additional instructions in the Rules and Regulations of the Commission.

Indicate nature of report by checking below.

REPORT ON BEGINNING DRILLING OPERATIONS		REPORT ON REPAIRING WELL	
REPORT ON RESULT OF SHOOTING OR CHEMICAL TREATMENT OF WELL		REPORT ON PULLING OR OTHERWISE ALTERING CASING	
REPORT ON RESULT OF TEST OF CASING SHUT-OFF	<b>X</b>	REPORT ON DEEPENING WELL	
REPORT ON RESULT OF PLUGGING OF WELL			

October 2, 1947

Hobbs, New Mexico

Date

Place

OIL CONSERVATION COMMISSION,  
SANTA FE, NEW MEXICO.

Gentlemen:

Following is a report on the work done and the results obtained under the heading noted above at the \_\_\_\_\_

Shell Oil Company, Incorporated Taylor-Glenn Well No. 1 in the \_\_\_\_\_  
Company or Operator Lease

W/4 of Sec. 3, T. 21-S, R. 37-E, N. M. P. M.,  
Hardy Field, Leon County.

The dates of this work were as follows: 10-2-47

Notice of intention to do the work was (~~was not~~) submitted on Form C-102 on 10-1-47 19\_\_\_\_

and approval of the proposed plan was (was not) obtained. (Cross out incorrect words.)

## DETAILED ACCOUNT OF WORK DONE AND RESULTS OBTAINED

After 24 hours W.O.C., tested 13 3/8-inch casing with 450 p.s.i. water pressure for 30 minutes. Held OK. Drilled cement and tested water shut-off with 450 p.s.i. water pressure for 30 minutes. Held OK.

Witnessed by John Pavhouse Shell Oil Company, Inc. Production Foreman.  
Name Company Title

Subscribed and sworn before me this 2nd

I hereby swear or affirm that the information given above is true and correct.

day of October, 19 47

Name M. C. Brunner *M. C. Brunner*

Position District Superintendent

Representing Shell Oil Company, Incorporated  
Company or Operator

*John R. Davis*  
Notary Public

My commission expires \_\_\_\_\_

Address \_\_\_\_\_

Remarks:

APPROVED

Date OCT 7 1947

*Ray York*  
Name  
OIL & GAS INSPECTOR  
Title

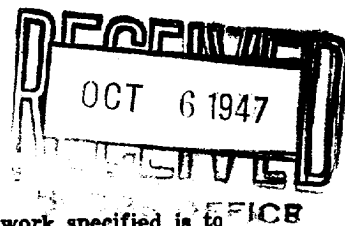


## NEW MEXICO OIL CONSERVATION COMMISSION

Santa Fe, New Mexico

DUPLICATE

## MISCELLANEOUS NOTICES



Submit this notice in triplicate to the Oil Conservation Commission or its proper agent before the work specified is to begin. A copy will be returned to the sender on which will be given the approval, with any modifications considered advisable, or the rejection by the Commission or agent, of the plan submitted. The plan as approved should be followed, and work should not begin until approval is obtained. See additional instructions in the Rules and Regulations of the Commission.

Indicate nature of notice by checking below:

NOTICE OF INTENTION TO TEST CASING SHUT-OFF	<input checked="" type="checkbox"/>	NOTICE OF INTENTION TO SHOOT OR CHEMICALLY TREAT WELL	
NOTICE OF INTENTION TO CHANGE PLANS		NOTICE OF INTENTION TO PULL OR OTHERWISE ALTER CASING	
NOTICE OF INTENTION TO REPAIR WELL		NOTICE OF INTENTION TO PLUG WELL	
NOTICE OF INTENTION TO DEEPEN WELL			

Hobbs, New MexicoOctober 1, 1947

Place

Date

OIL CONSERVATION COMMISSION,  
Santa Fe, New Mexico.

Gentlemen:

Following is a notice of intention to do certain work as described below at the \_\_\_\_\_

Shell Oil Company, Incorporated Taylor-Glenn Well No. 1 in NW/4  
Company or Operator Lease  
of Sec. 3, T. 21-S, R. 37-E, N. M. P. M., Hardy Field.  
Lea County.

## FULL DETAILS OF PROPOSED PLAN OF WORK

FOLLOW INSTRUCTIONS IN THE RULES AND REGULATIONS OF THE COMMISSION

Run 301 feet 13 3/8-inch casing to 301 feet and cemented with 250 sacks cement.

Plug down at 1:30 A.M. 10-1-47. Will test casing shut off at 1:30 A.M. 10-2-47.

Circulated out 20 sacks

OCT 6 1947

Approved \_\_\_\_\_, 19\_\_\_\_  
except as follows:

Shell Oil Company, Incorporated  
Company or Operator

By M. C. Brunner *M. C. Brunner*Position District Superintendent

Send communications regarding well to

Name Shell Oil Company, IncorporatedAddress Box 1457 Hobbs, New Mexico

OIL CONSERVATION COMMISSION,  
By Roy. Garbaccio (J.E.)  
Title OIL & GAS INSPECTOR

10

100

1. *Chlorophyll a* (Chl *a*) and *Chlorophyll b* (Chl *b*) were determined by the method of Lichtenthaler and Whistler (1973). The total chlorophyll content was determined by the method of Arar and Cook (1980). The carotenoid content was determined by the method of Lichtenthaler and Whistler (1973). The total carotenoid content was determined by the method of Arar and Cook (1980). The total protein content was determined by the method of Lowry et al. (1951). The total lipid content was determined by the method of Bligh and Dyer (1959). The total carbohydrate content was determined by the method of Dubois and Gilles (1950). The total nucleic acid content was determined by the method of Burton (1956). The total ash content was determined by the method of AOAC (1990). The total dry weight was determined by the method of AOAC (1990). The total water content was determined by the method of AOAC (1990). The total organic acid content was determined by the method of AOAC (1990). The total alkaloid content was determined by the method of AOAC (1990). The total flavonoid content was determined by the method of AOAC (1990). The total phenol content was determined by the method of AOAC (1990). The total tannin content was determined by the method of AOAC (1990). The total saponin content was determined by the method of AOAC (1990). The total sterol content was determined by the method of AOAC (1990). The total glycoside content was determined by the method of AOAC (1990). The total alkaloid content was determined by the method of AOAC (1990). The total flavonoid content was determined by the method of AOAC (1990). The total phenol content was determined by the method of AOAC (1990). The total tannin content was determined by the method of AOAC (1990). The total saponin content was determined by the method of AOAC (1990). The total sterol content was determined by the method of AOAC (1990). The total glycoside content was determined by the method of AOAC (1990).

— 2 —

[illegible]

1997, 1998, 1999, 2000, 2001, 2002, 2003, 2004, 2005, 2006, 2007, 2008, 2009, 2010, 2011, 2012, 2013, 2014, 2015, 2016, 2017, 2018, 2019, 2020, 2021, 2022, 2023, 2024, 2025, 2026, 2027, 2028, 2029, 2030, 2031, 2032, 2033, 2034, 2035, 2036, 2037, 2038, 2039, 2040, 2041, 2042, 2043, 2044, 2045, 2046, 2047, 2048, 2049, 2050, 2051, 2052, 2053, 2054, 2055, 2056, 2057, 2058, 2059, 2060, 2061, 2062, 2063, 2064, 2065, 2066, 2067, 2068, 2069, 2070, 2071, 2072, 2073, 2074, 2075, 2076, 2077, 2078, 2079, 2080, 2081, 2082, 2083, 2084, 2085, 2086, 2087, 2088, 2089, 2090, 2091, 2092, 2093, 2094, 2095, 2096, 2097, 2098, 2099, 2100, 2101, 2102, 2103, 2104, 2105, 2106, 2107, 2108, 2109, 2110, 2111, 2112, 2113, 2114, 2115, 2116, 2117, 2118, 2119, 2120, 2121, 2122, 2123, 2124, 2125, 2126, 2127, 2128, 2129, 2130, 2131, 2132, 2133, 2134, 2135, 2136, 2137, 2138, 2139, 2140, 2141, 2142, 2143, 2144, 2145, 2146, 2147, 2148, 2149, 2150, 2151, 2152, 2153, 2154, 2155, 2156, 2157, 2158, 2159, 2160, 2161, 2162, 2163, 2164, 2165, 2166, 2167, 2168, 2169, 2170, 2171, 2172, 2173, 2174, 2175, 2176, 2177, 2178, 2179, 2180, 2181, 2182, 2183, 2184, 2185, 2186, 2187, 2188, 2189, 2190, 2191, 2192, 2193, 2194, 2195, 2196, 2197, 2198, 2199, 2200, 2201, 2202, 2203, 2204, 2205, 2206, 2207, 2208, 2209, 2210, 2211, 2212, 2213, 2214, 2215, 2216, 2217, 2218, 2219, 2220, 2221, 2222, 2223, 2224, 2225, 2226, 2227, 2228, 2229, 2230, 2231, 2232, 2233, 2234, 2235, 2236, 2237, 2238, 2239, 2240, 2241, 2242, 2243, 2244, 2245, 2246, 2247, 2248, 2249, 2250, 2251, 2252, 2253, 2254, 2255, 2256, 2257, 2258, 2259, 2260, 2261, 2262, 2263, 2264, 2265, 2266, 2267, 2268, 2269, 2270, 2271, 2272, 2273, 2274, 2275, 2276, 2277, 2278, 2279, 2280, 2281, 2282, 2283, 2284, 2285, 2286, 2287, 2288, 2289, 2290, 2291, 2292, 2293, 2294, 2295, 2296, 2297, 2298, 2299, 2300, 2301, 2302, 2303, 2304, 2305, 2306, 2307, 2308, 2309, 2310, 2311, 2312, 2313, 2314, 2315, 2316, 2317, 2318, 2319, 2320, 2321, 2322, 2323, 2324, 2325, 2326, 2327, 2328, 2329, 2330, 2331, 2332, 2333, 2334, 2335, 2336, 2337, 2338, 2339, 2340, 2341, 2342, 2343, 2344, 2345, 2346, 2347, 2348, 2349, 2350, 2351, 2352, 2353, 2354, 2355, 2356, 2357, 2358, 2359, 2360, 2361, 2362, 2363, 2364, 2365, 2366, 2367, 2368, 2369, 2370, 2371, 2372, 2373, 2374, 2375, 2376, 2377, 2378, 2379, 2380, 2381, 2382, 2383, 2384, 2385, 2386, 2387, 2388, 2389, 2390, 2391, 2392, 2393, 2394, 2395, 2396, 2397, 2398, 2399, 2400, 2401, 2402, 2403, 2404, 2405, 2406, 2407, 2408, 2409, 2410, 2411, 2412, 2413, 2414, 2415, 2416, 2417, 2418, 2419, 2420, 2421, 2422, 2423, 2424, 2425, 2426, 2427, 2428, 2429, 2430, 2431, 2432, 2433, 2434, 2435, 2436, 2437, 2438, 2439, 2440, 2441, 2442, 2443, 2444, 2445, 2446, 2447, 2448, 2449, 2450, 2451, 2452, 2453, 2454, 2455, 2456, 2457, 2458, 2459, 2460, 2461, 2462, 2463, 2464, 2465, 2466, 2467, 2468, 2469, 2470, 2471, 2472, 2473, 2474, 2475, 2476, 2477, 2478, 2479, 2480, 2481, 2482, 2483, 2484, 2485, 2486, 2487, 2488, 2489, 2490, 2491, 2492, 2493, 2494, 2495, 2496, 2497, 2498, 2499, 2500, 2501, 2502, 2503, 2504, 2505, 2506, 2507, 2508, 2509, 2510, 2511, 2512, 2513, 2514, 2515, 2516, 2517, 2518, 2519, 2520, 2521, 2522, 2523, 2524, 2525, 2526, 2527, 2528, 2529, 2530, 2531, 2532, 2533, 2534, 2535, 2536, 2537, 2538, 2539, 2540, 2541, 2542, 2543, 2544, 2545, 2546, 2547, 2548, 2549, 2550, 2551, 2552, 2553, 2554, 2555, 2556, 2557, 2558, 2559, 2560, 2561, 2562, 2563, 2564, 2565, 2566, 2567, 2568, 2569, 2570, 2571, 2572, 2573, 2574, 2575, 2576, 2577, 2578, 2579, 2580, 2581, 2582, 2583, 2584, 2585, 2586, 2587, 2588, 2589, 2590, 2591, 2592, 2593, 2594, 2595, 2596, 2597, 2598, 2599, 2600, 2601, 2602, 2603, 2604, 2605, 2606, 2607, 2608, 2609, 2610, 2611, 2612, 2613, 2614, 2615, 2616, 2617, 2618, 2619, 2620, 2621, 2622, 2623, 2624, 2625, 2626, 2627, 2628, 2629, 2630, 2631, 2632, 2633, 2634, 2635, 2636, 2637, 2638, 2639, 2640, 2641, 2642, 2643, 2644, 2645, 2646, 2647, 2648, 2649, 2650, 2651, 2652, 2653, 2654, 2655, 2656, 2657, 2658, 2659, 2660, 2661, 2662, 2663, 2664, 2665, 2666, 2667, 2668, 2669, 2670, 2671, 2672, 2673, 2674, 2675, 2676, 2677, 2678, 26

Figure 1. Schematic representation of the experimental design. The subjects were divided into two groups: the control group (CG) and the experimental group (EG). The CG was divided into two subgroups: the control group (CG) and the control group (CG). The EG was divided into two subgroups: the experimental group (EG) and the experimental group (EG). The CG was divided into two subgroups: the control group (CG) and the control group (CG). The EG was divided into two subgroups: the experimental group (EG) and the experimental group (EG).



Santa Fe, New Mexico

## NOTICE OF INTENTION TO DRILL

Notice must be given to the Oil Conservation Commission or its proper agent and approval obtained before drilling begins. If changes in the proposed plan are considered advisable, a copy of this notice showing such changes will be returned to the sender. Submit this notice in triplicate. One copy will be returned following approval. See additional instructions in Rules and Regulations of the Commission.

Hobbs, New Mexico

9-17-47

HOBBS OFFICE

OIL CONSERVATION COMMISSION,  
Santa Fe, New Mexico,

Place

Date

Gentlemen:

You are hereby notified that it is our intention to commence the drilling of a well to be known as

Shell Oil Company, Incorporated W.F. Taylor-Glenn Well No. 1 in NM/4  
Company or Operator Lease

of Sec. 3, T 21-N, R 37-E, N. M., Hardy Area, Lea County.

The well is 3226 feet (N.) (S.) of the North line and 1980 feet (E.) (W.) of the West line of Sec. 3, T 21-N, R 37-E Lea County, N.M.

(Give location from section or other legal subdivision lines. Cross out wrong directions.)

If state land the oil and gas lease is No. Assignment No.

If patented land the owner is W. F. Taylor and Glenn

Address - -

If government land the permittee is - -

Address - -

The lessee is Shell Oil Company, Incorporated

Address Box 1457 Hobbs, New Mexico

We propose to drill well with drilling equipment as follows:

Conventional Rotary Rig

The status of a bond for this well in conformance with Rule 39 of the General Rules and Regulations of the Commission is as follows:

We propose to use the following strings of casing and to land or cement them as indicated:

Size of Hole	Size of Casing	Weight Per Foot	New or Second Hand	Depth	Landed or Cemented	Sacks Cement
17 1/2"	13 3/8"	48#	New	300'	cemented	300 sacks to surface
11"	8 5/8"	32#	New	4000'	cemented	to surface
7 7/8"	5 1/2"	15.5# & 17#	New	T.D.		300 sacks

If changes in the above plan become advisable we will notify you before cementing or landing casing. We estimate that the first productive oil or gas sand should occur at a depth of about - feet.

Additional information:

Wildcat Well - Hardy Area

Will run Caliper Survey and cement intermediate string to surface

Approved SEP 25 1947, 19  
except as follows:

Sincerely yours,

Shell Oil Company, Incorporated  
Company or Operator

By W. O. Brunner W. O. Brunner

Position District Superintendent

Send communications regarding well to

Name Shell Oil Company, Incorporated

Address Box 1457 Hobbs, New Mexico

OIL CONSERVATION COMMISSION,

By Roy Yankovich

Title OIL &amp; GAS

12	11	10	9
No. 1	3		



1877



NEW MEXICO OIL CONSERVATION COMMISSION  
WELL LOCATION AND ACREAGE DEDICATION PLAT

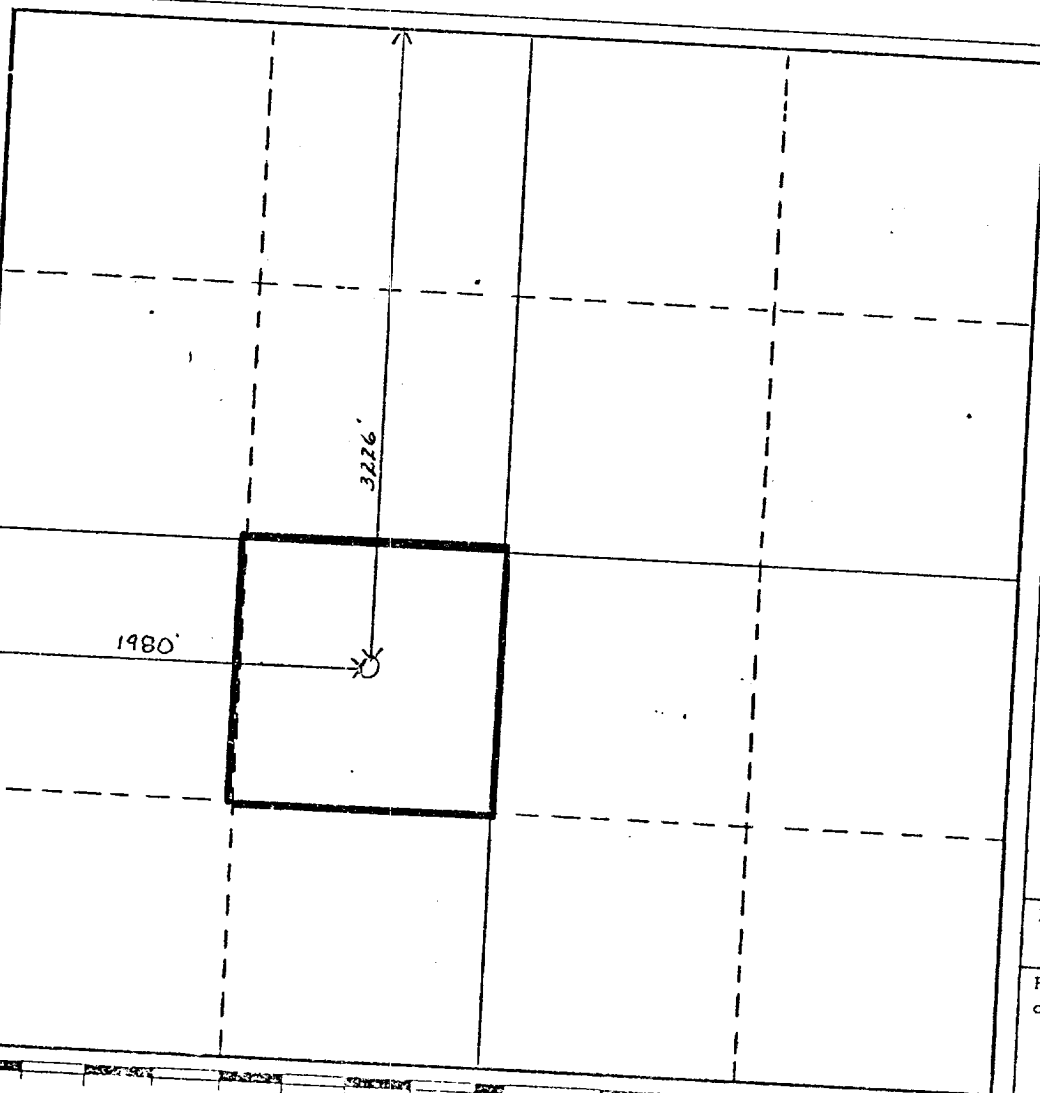
Form C-102  
Supersedes C-128  
Effective 1-1-65

All distances must be from the outer boundaries of the Section.

Operator <b>Shell Oil Company</b>			Lease <b>Taylor-Glen</b>		Well No. <b>1</b>
Unit Letter <b>(lot 11) K</b>	Section <b>3</b>	Township <b>21S</b>	Range <b>37E</b>	County <b>Lea</b>	
Actual Footage Location of Well: <b>3226</b> feet from the <b>North</b> line and <b>1980</b> feet from the <b>West</b> line					
Ground Level Elev: <b>3474'</b>	Producing Formation <b>Blinebry</b>		Pool <b>Blinebry (Gas)</b>		Dedicated Acreage: <b>40</b> Acres

1. Outline the acreage dedicated to the subject well by colored pencil or hachure marks on the plat below.
2. If more than one lease is dedicated to the well, outline each and identify the ownership thereof (both as to working interest and royalty).
3. If more than one lease of different ownership is dedicated to the well, have the interests of all owners been consolidated by communitization, unitization, force-pooling, etc?  
☐ Yes ☐ No If answer is "yes," type of consolidation \_\_\_\_\_

If answer is "no," list the owners and tract descriptions which have actually been consolidated. (Use reverse side of this form if necessary.) \_\_\_\_\_  
 No allowable will be assigned to the well until all interests have been consolidated (by communitization, unitization, forced-pooling, or otherwise) or until a non-standard unit, eliminating such interests, has been approved by the Commission.



CERTIFICATION

I hereby certify that the information contained herein is true and complete to the best of my knowledge and belief.

*A. E. Cordray*  
Name

A. E. Cordray

Position

Staff Engineer

Company

Shell Oil Company

Date

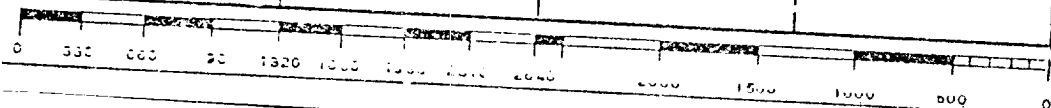
10-26-73

I hereby certify that the well location shown on this plat was plotted from field notes of actual surveys made by me or under my supervision, and that the same is true and correct to the best of my knowledge and belief.

Date Surveyed

Registered Professional Engineer  
and/or Land Surveyor

Certificate No.



# NEW MEXICO OIL CONSERVATION COMMISSION

Revised 5/1/57

at well location

## Well Location and Acreage Dedication Plat

NO. 885 OFFICE OCC

### Section A.

Date February 19, 1960

1960 FEB 24 PM 3:46

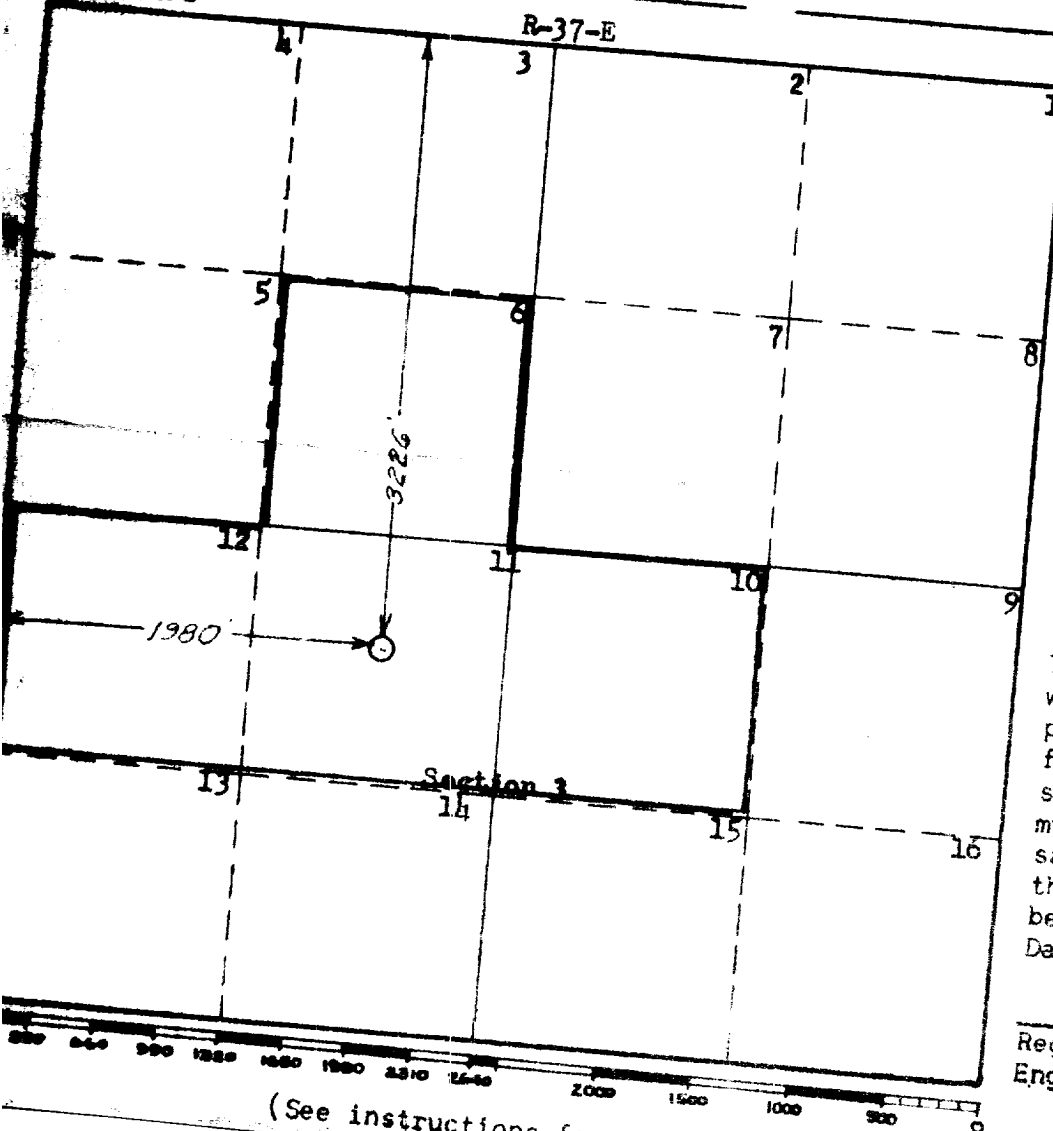
Operator Shell Oil Company Unit Letter Lot 11 Section 3 Lease 1960 FEB 24 PM 3:46  
 Well No. 1 Feet From north Line, 1980 Township 21-S Range 37-E NMPM  
 Located 3226 Feet From north Line, 1980 Township 21-S Range 37-E Line  
 County Lea G. L. Elevation 3474 Dedicated Acreage 160 Acres  
 Name of Producing Formation Elinabry Pool Elinabry

1. Is the Operator the only owner\* in the dedicated acreage outlined on the plat below?  
 Yes    No X
2. If the answer to question one is "no," have the interests of all the owners been consolidated by communitization agreement or otherwise? Yes X No   . If answer is "yes," Type of Consolidation Communitization Agreement
3. If the answer to question two is "no," list all the owners and their respective interests below:

Owner

Land Description

### Section B



Note: The lower 320 acres of this section are not shown because of the unusual shape of section.  
 This is to certify that the information in Section A above is true and complete to the best of my knowledge and belief.

Shell Oil Company  
 (Operator)

R. A. Lowery R.A. Lowery  
 (Representative)

Box 845, Roswell, New Mexico  
 Address

This is to certify that the well location shown on the plat in Section B was plotted from field notes of actual surveys made by me or under my supervision and that the same is true and correct to the best of my knowledge and belief.

Date Surveyed                     

Registered Professional Engineer and/or Land Surveyor.

Certificate No.                     

(See instructions for completing this form)

# NEW MEXICO OIL CONSERVATION COMMISSION

Form C-128

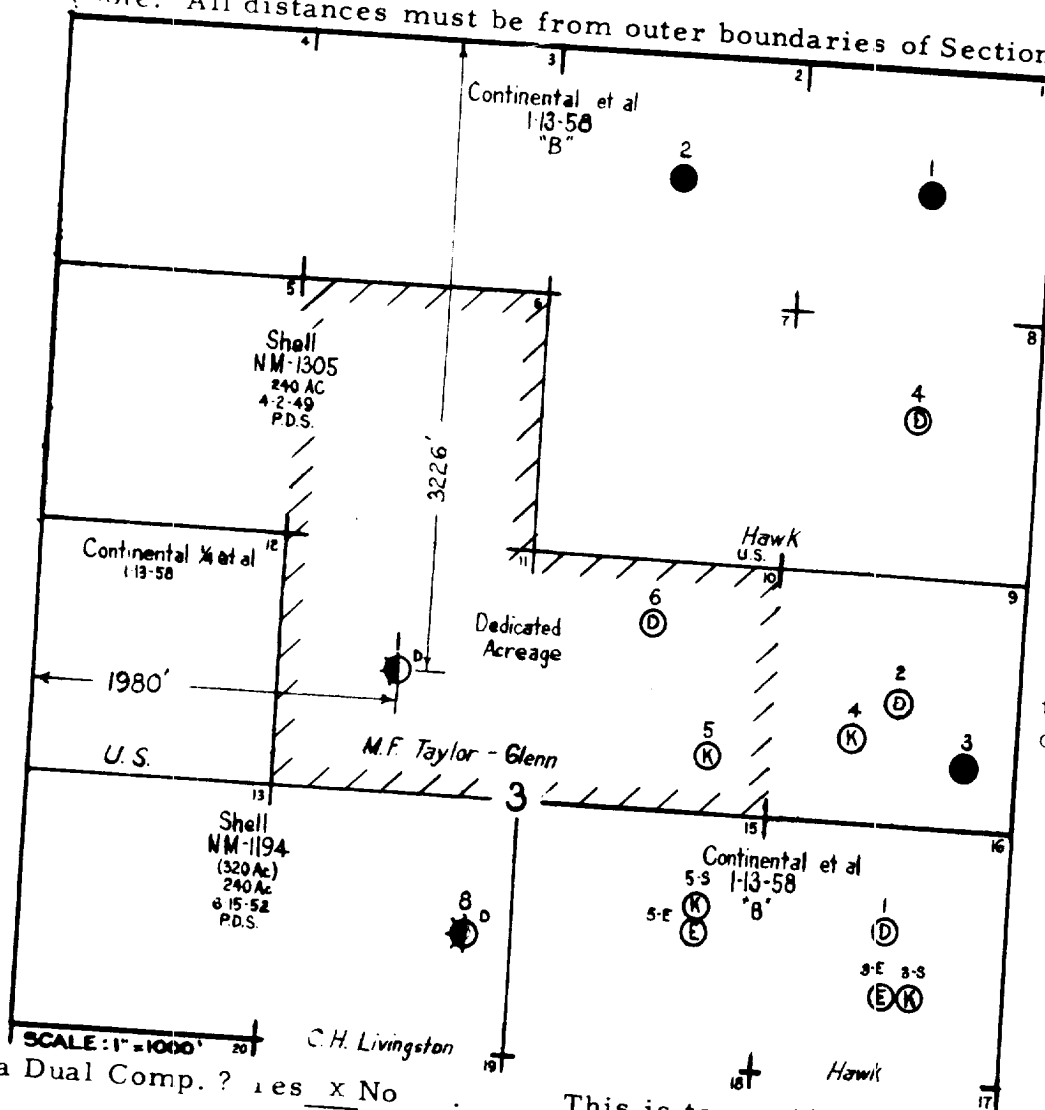
Well Location and/or Gas Proration Plat

Operator Shell Oil Company Lease Taylor-Glenn Date 1-00  
Well No. 1 Section 3 Township 21-S Range 37-E NMPM  
Located 3226 Feet From North Line, 1980 Feet From West Line,  
Lea County, New Mexico. G. L. Elevation approximately 3474  
Name of Producing Formation Blinebry Pool Blinebry Dedicated Acreage 120

(Note: All distances must be from outer boundaries of Section)

## Legend

- Blinebry Producer
- ⊙ Drinkard Producer
- Ⓚ McKee Producer
- ⓔ Ellenburger Producer



Note:  
The lower 320  
acres of this sec-  
tion are not  
shown because of  
the unusual shape  
of section.

1. Is this Well a Dual Comp.? Yes x No
2. If the answer to Question 1 is yes, are there any other dually completed wells within the dedicated acreage? Yes    No x

Name B. Nevill *B. Nevill*  
Position Division Exploitation Engineer  
Representing Shell Oil Company  
Address Box 1957, Hobbs, New Mexico

This is to certify that the above plat was prepared from field notes of actual surveys made by me or under my supervision and that the same are true and correct to the best of my knowledge and belief.

Date Surveyed                       
Registered Professional Engineer and/or Land Surveyor