

NEW MEXICO OIL CONSERVATION COMMISSION
Santa Fe, New Mexico

Form C-101
Revised (12/1/55)

NOTICE OF INTENTION TO DRILL

Notice must be given to the District Office of the Oil Conservation Commission and approval obtained before drilling or recompletion begins. If changes in the proposed plan are considered advisable, a copy of this notice showing such changes will be returned to the sender. Submit this notice in QUINTUPPLICATE. One copy will be returned following approval. See additional instructions in Rules and Regulations of the Commission. If State Land submit 6 Copies Attach Form C- 128 in triplicate to first 3 copies of form C-101

930 Fidelity Union Life Bldg., Dallas, Tex.

Mar. 21, 1964

OIL CONSERVATION COMMISSION
SANTA FE, NEW MEXICO

Gentlemen:

You are hereby notified that it is our intention to commence the Drilling of a well to be known as

Dalport Oil Corporation

(Company or Operator)

TP - State

(Lease)

Well No. 1

F

(Unit)

The well is

located 2310 feet from the North line and 2310 feet from the

West

line of Section 17

T. 21S

R. 35 E

NMPM.

(GIVE LOCATION FROM SECTION LINE)

Wildcat

Pool,

Lea

County

If State Land the Oil and Gas Lease is No. E-8103

If patented land the owner is

Address

We propose to drill well with drilling equipment as follows:

Rotary to total depth

The status of plugging bond is Blanket Bond on file

Drilling Contractor Gackle Drilling Co, Hobbs, N. Mex.

We intend to complete this well in the Seven Rivers

formation at an approximate depth of 4100 feet.

CASING PROGRAM

We propose to use the following strings of Casing and to cement them as indicated:

Size of Hole	Size of Casing	Weight per Foot	New or Second Hand	Depth	Sacks Cement
10 3/4	8 5/8	24 #	New	250	200-circulate
7 7/8	4 1/2	9.5 #	New	4100	200

If changes in the above plans become advisable we will notify you immediately.

ADDITIONAL INFORMATION (If recompletion give full details of proposed plan of work.)

MAR 23 1964

Approved....., 19.....
Except as follows:

OIL CONSERVATION COMMISSION

By *[Signature]* Engineer District 1

Sincerely yours,

Dalport Oil Corporation

By *[Signature]*

Position Geologist

Send Communications regarding well to

Name Dalport Oil Corp.

Address 930 Fidelity Union Life Bldg. Dallas, Tex.

NEW MEXICO OIL CONSERVATION COMMISSION
WELL LOCATION AND ACREAGE DEDICATION PLAT

HOBBS OFFICE O. C. C.
FORM C-128
Revised 5/1/57

SEE INSTRUCTIONS FOR COMPLETING THIS FORM ON THE REVERSE SIDE

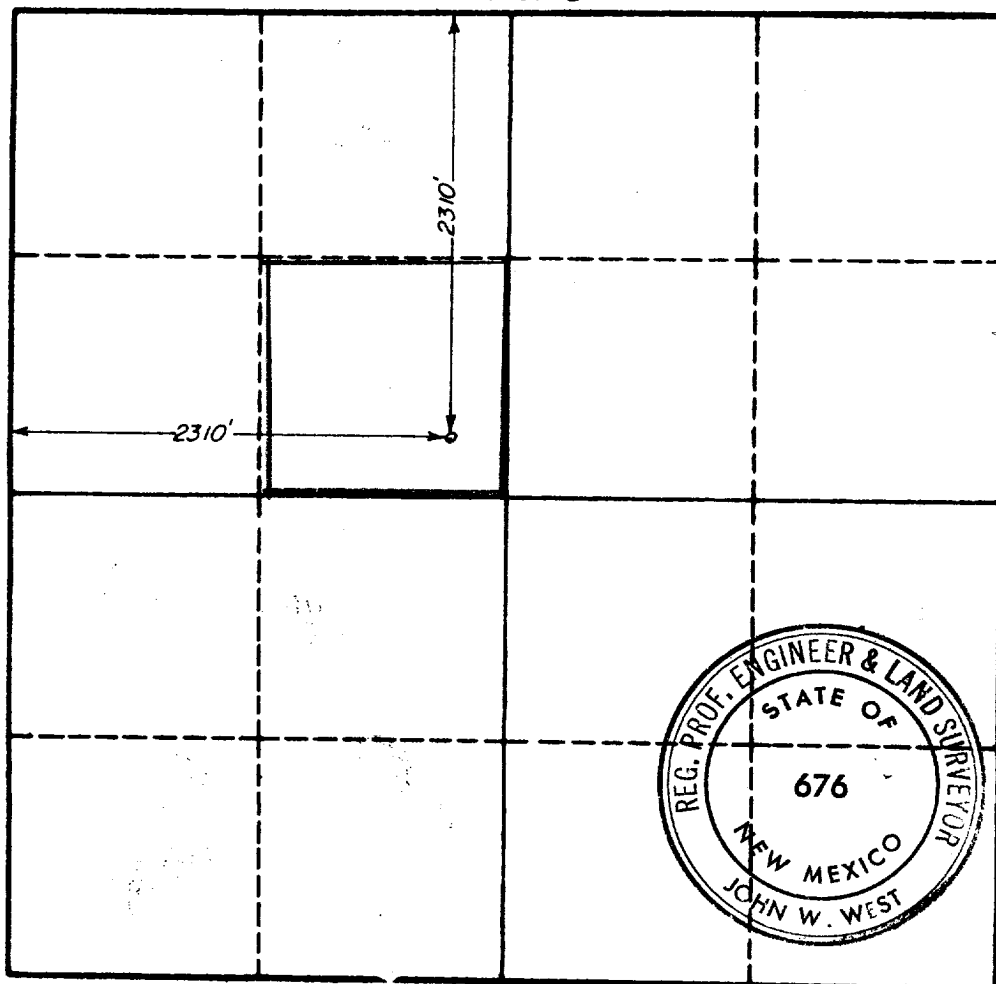
SECTION A

Operator DALPORT OIL CORP.		Lease 2- State		Well No. 2
Unit Letter F	Section 17	Township 21 SOUTH	Range 35 EAST	County LEA
Actual Footage Location of Well: 2310 feet from the NORTH line and 2310 feet from the WEST line				
Ground Level Elev. 3655.3	Producing Formation San Juan		Pool Wildcat	Dedicated Acreage: 10 Acres

1. Is the Operator the only owner in the dedicated acreage outlined on the plat below? YES _____ NO X. ("Owner" means the person who has the right to drill into and to produce from any pool and to appropriate the production either for himself or for himself and another. (65-3-29 (e) NMSA 1935 Comp.)
2. If the answer to question one is "no," have the interests of all the owners been consolidated by communization agreement or otherwise? YES _____ NO _____. If answer is "yes," Type of Consolidation Operating Contract
3. If the answer to question two is "no," list all the owners and their respective interests below:

Owner	Land Description

SECTION B



CERTIFICATION

I hereby certify that the information in SECTION A above is true and complete to the best of my knowledge and belief.

Name <i>Stan M. Langford</i>
Position Geologist
Company DALPORT OIL CORPORATION
Date 3-21-64

I hereby certify that the well location shown on the plat in SECTION B was plotted from field notes of actual surveys made by me or under my supervision, and that the same is true and correct to the best of my knowledge and belief.

Date Surveyed 3-1-64
Registered Professional Engineer and/or Land Surveyor, JOHN W. WEST
<i>John W. West</i>
Certificate No. N. M. - P. E. & L. S. NO. 676

0 330 660 990 1320 1650 1980 2310 2640 2970 3300 3630 3960 4290 4620 4950 5280 5610 5940 6270 6600