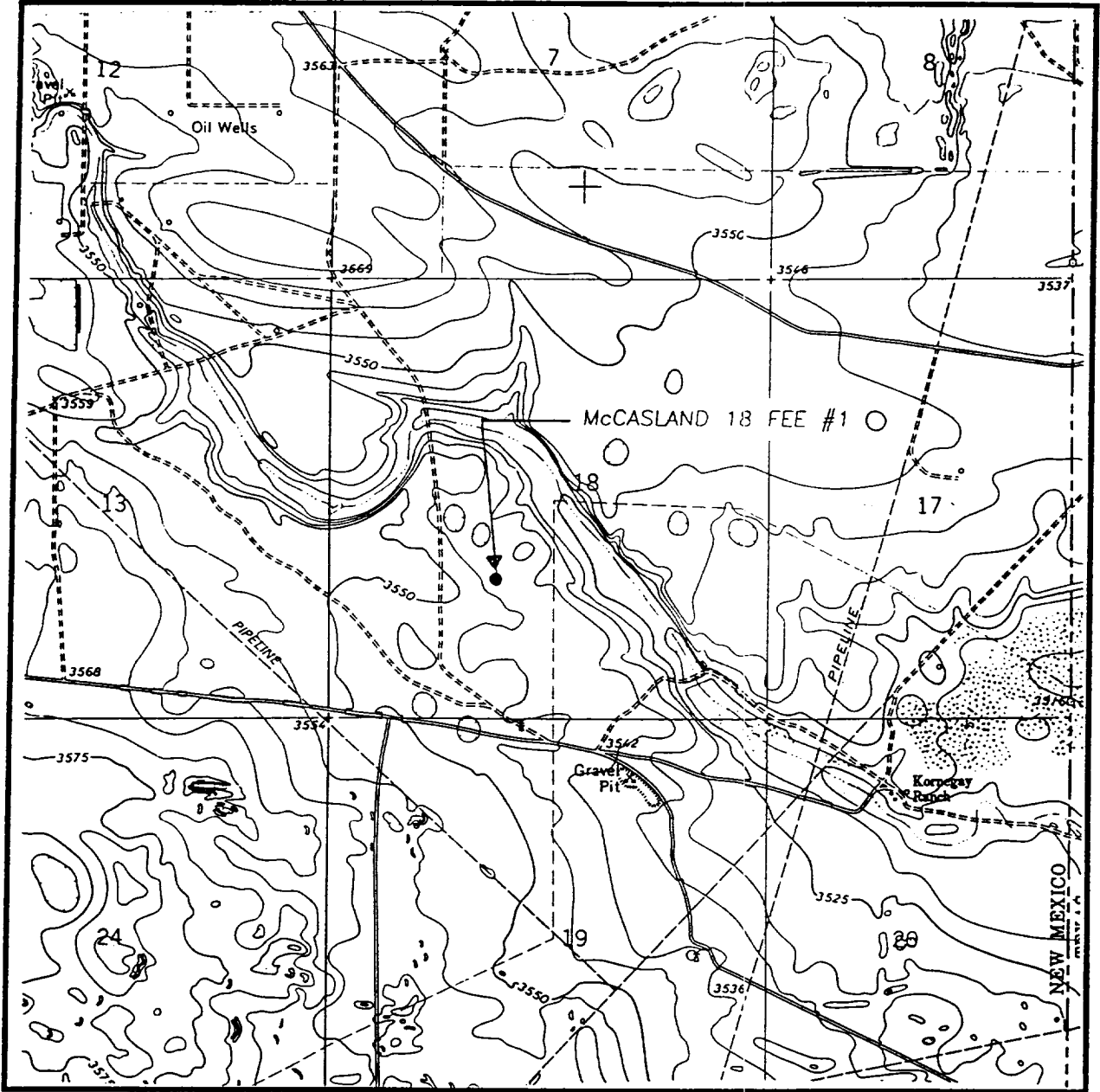


LOCATION VERIFICATION MAP



SCALE: 1" = 2000'

CONTOUR INTERVAL:
HOBBS SE - 5'

SEC. 18 TWP. 20-S RGE. 39-E

SURVEY N.M.P.M.

COUNTY LEA

DESCRIPTION 1650' FSL & 2000' FWL

ELEVATION 3544

OPERATOR PIONEER NATURAL RESOURCES USA, INC.

LEASE McCASLAND 18 FEE

U.S.G.S. TOPOGRAPHIC MAP

HOBBS SE, N.M.

**JOHN WEST ENGINEERING
HOBBS, NEW MEXICO**

(505) 393-3117